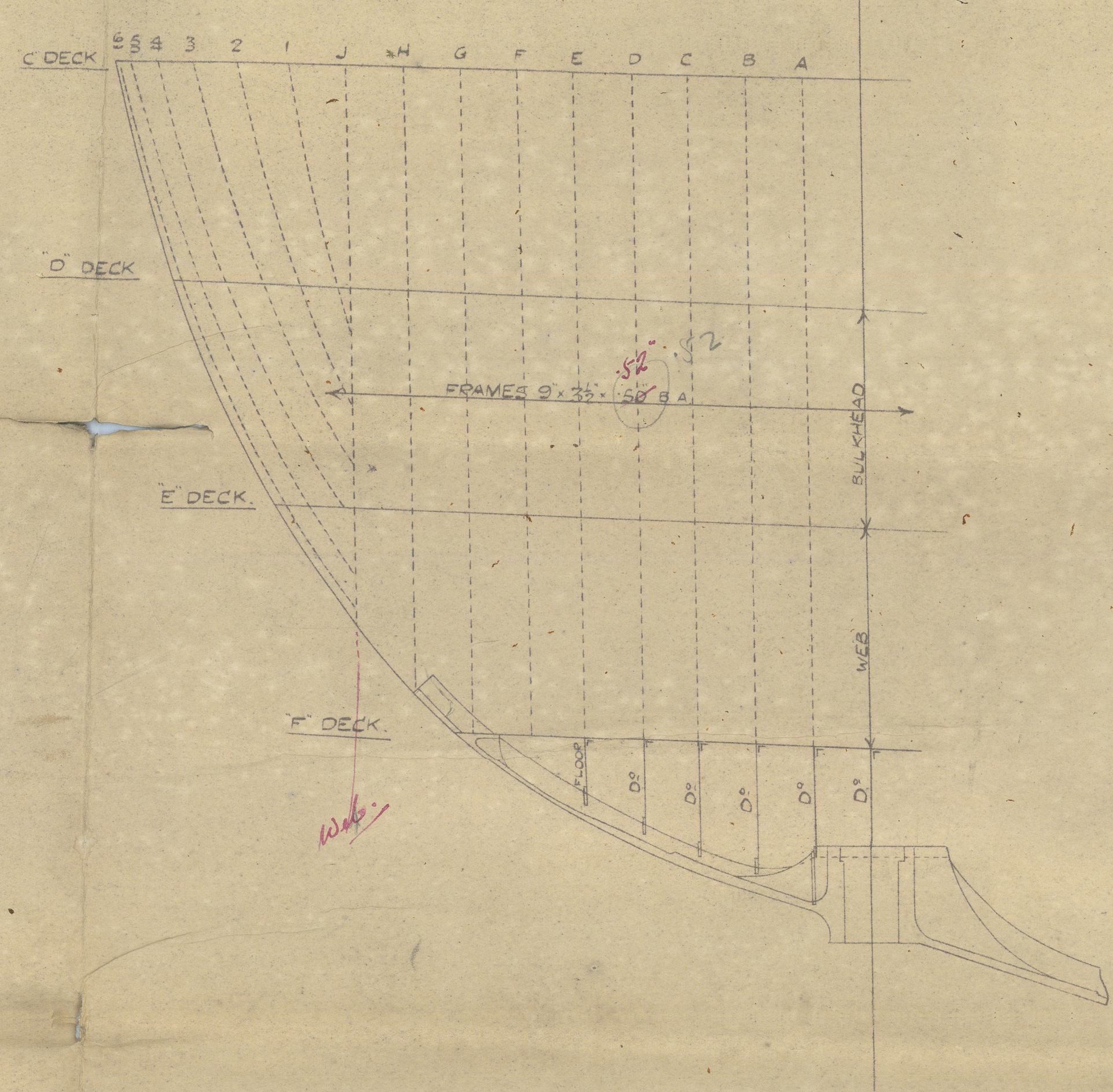
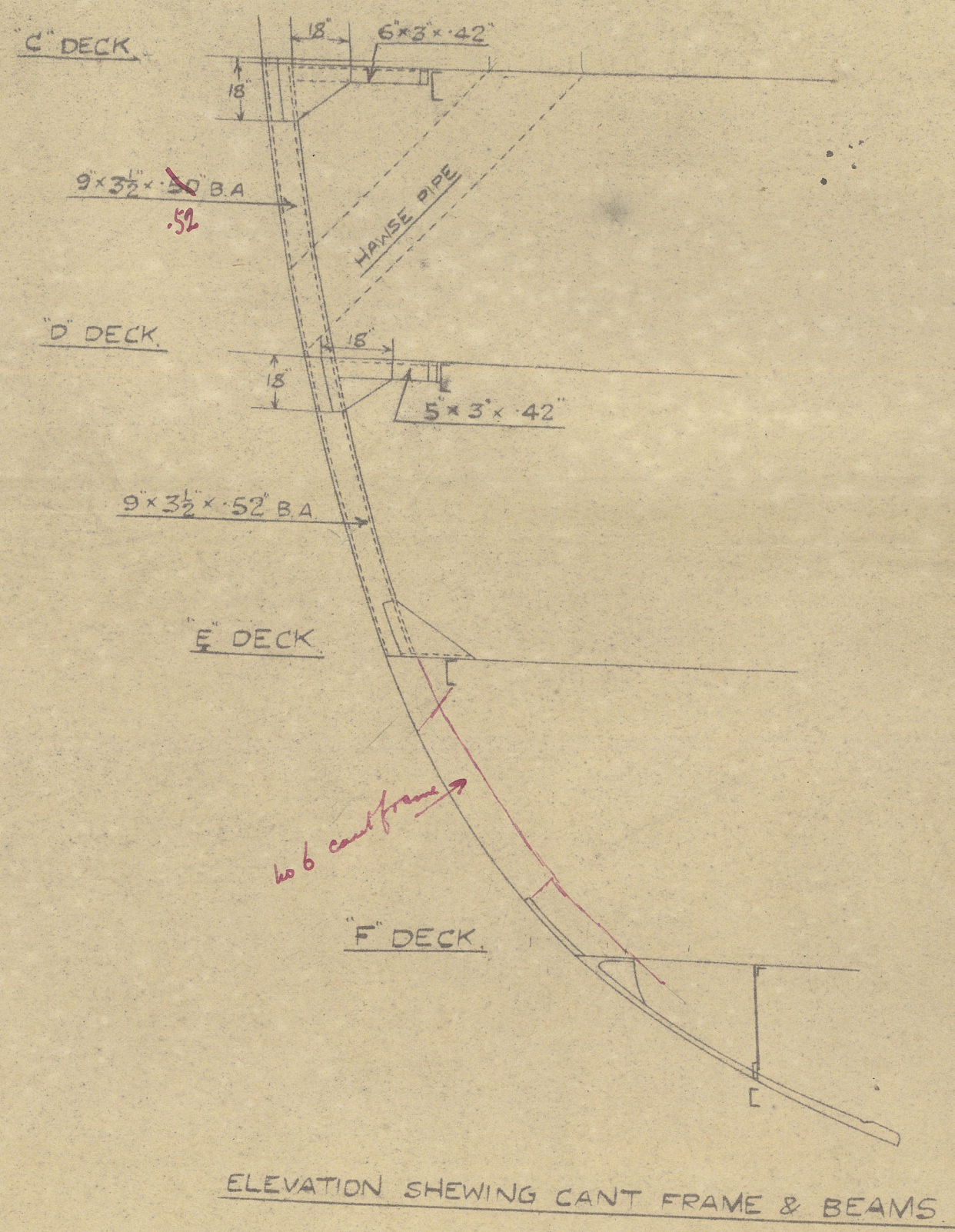
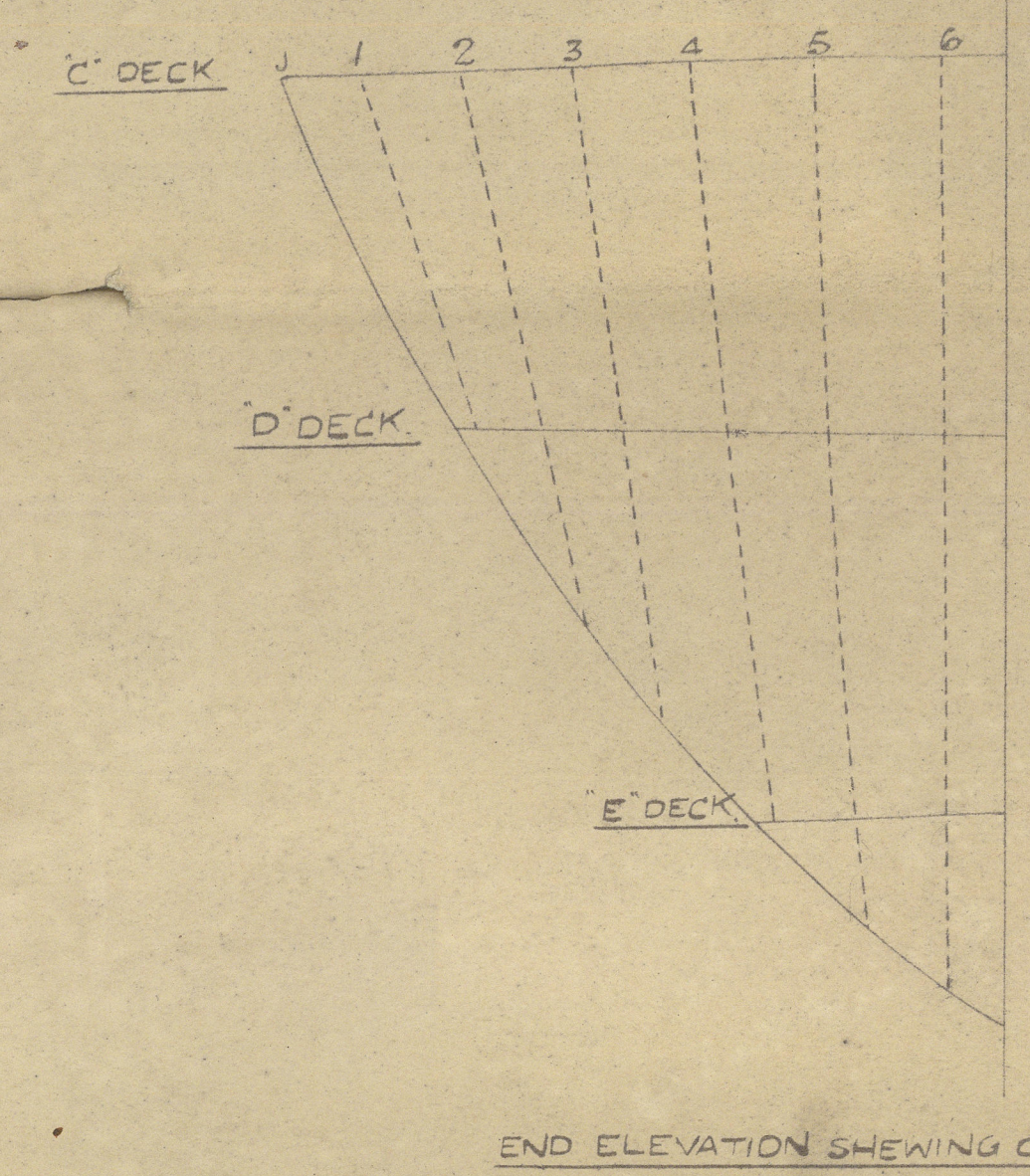
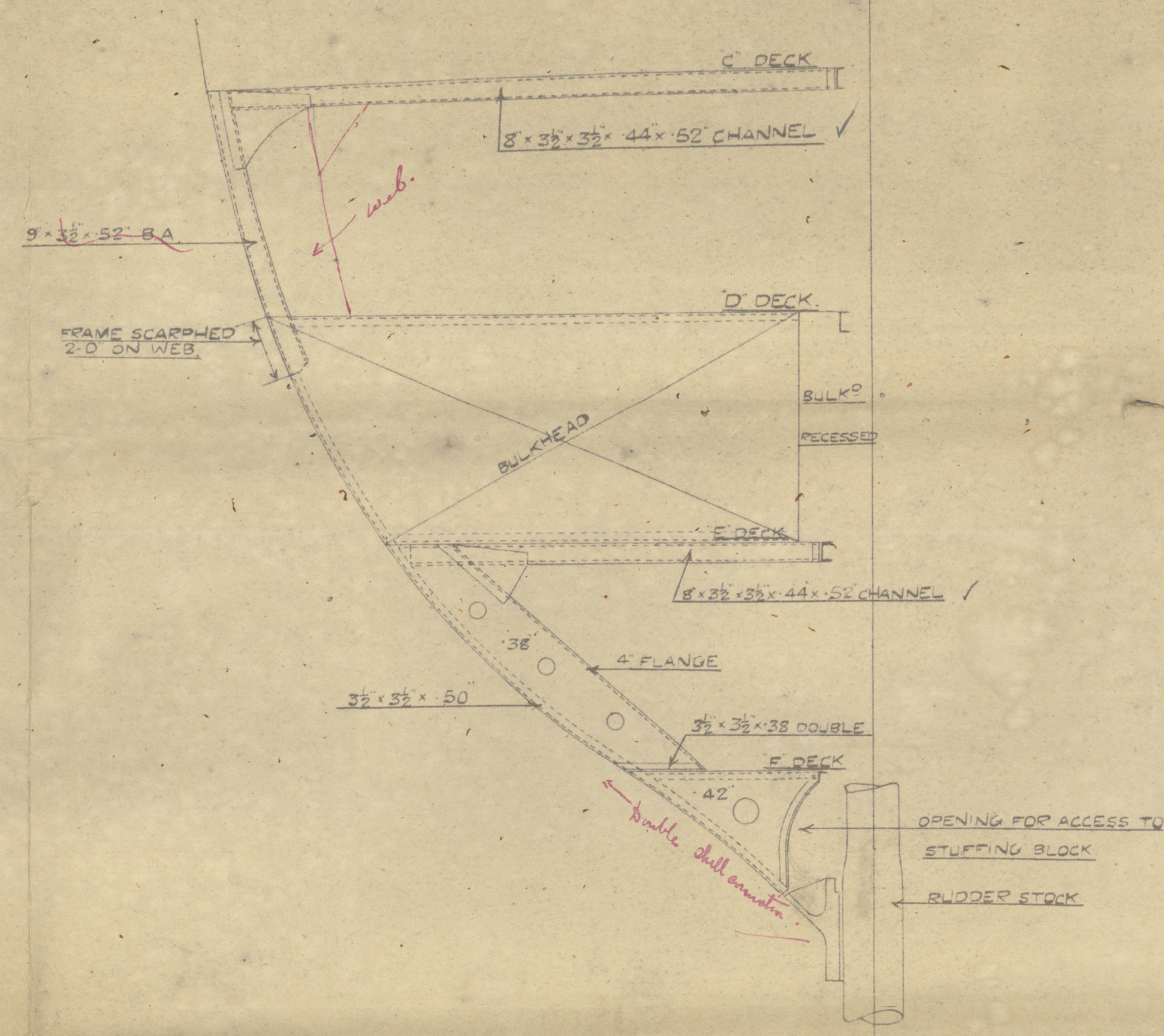


24.3.19.

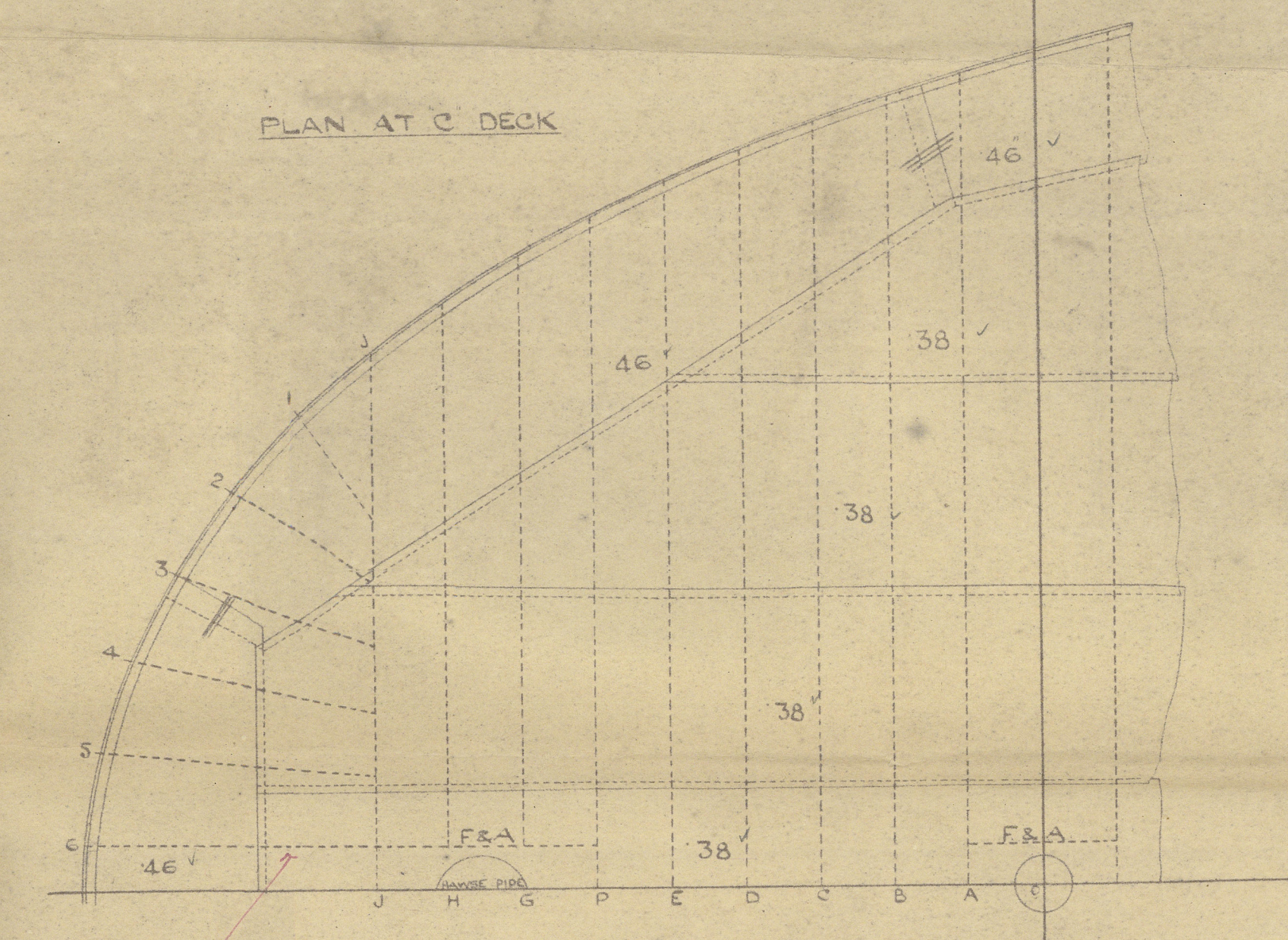
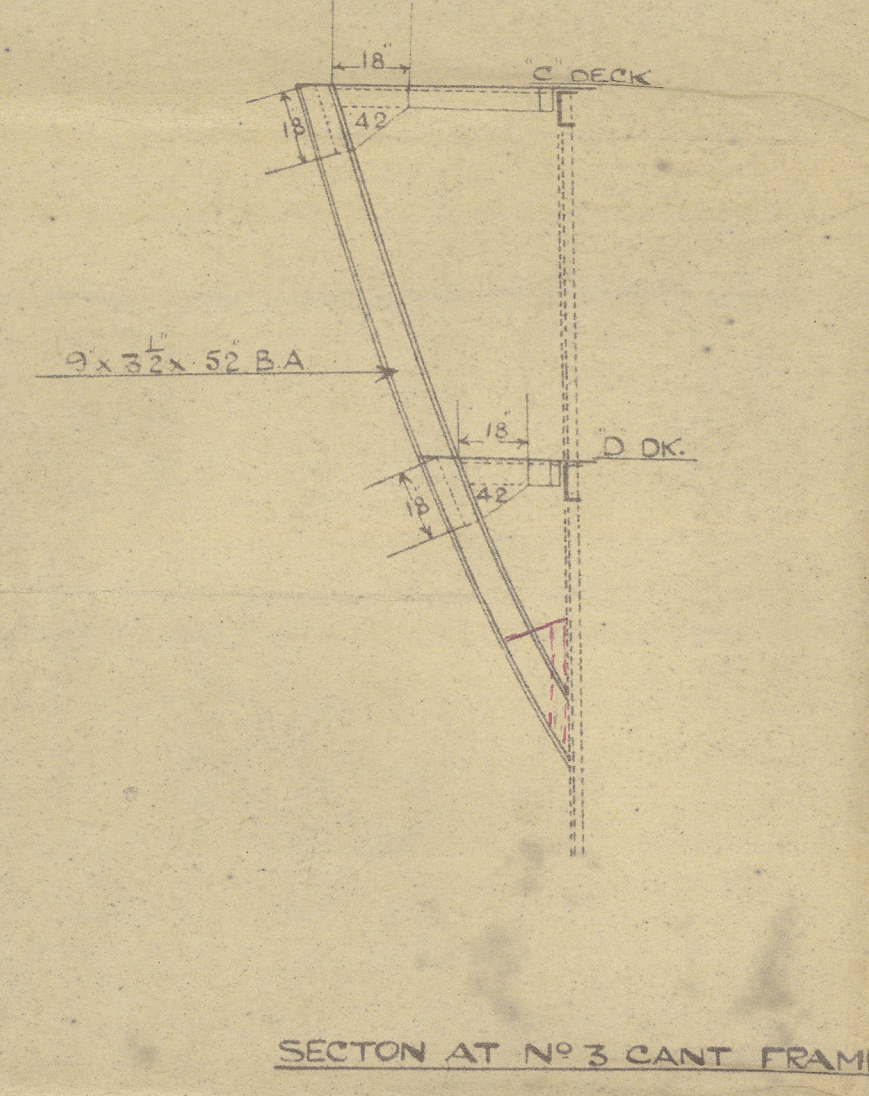
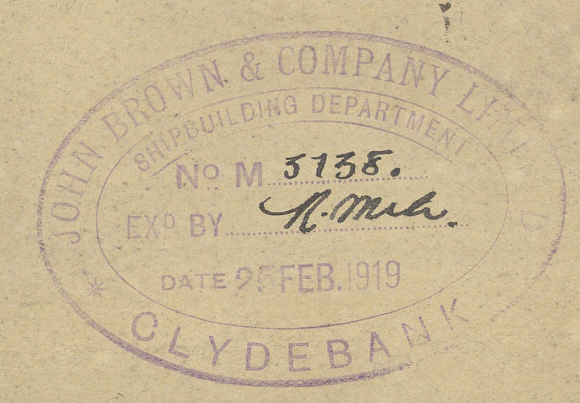


Connections & Scurvy's Sighting

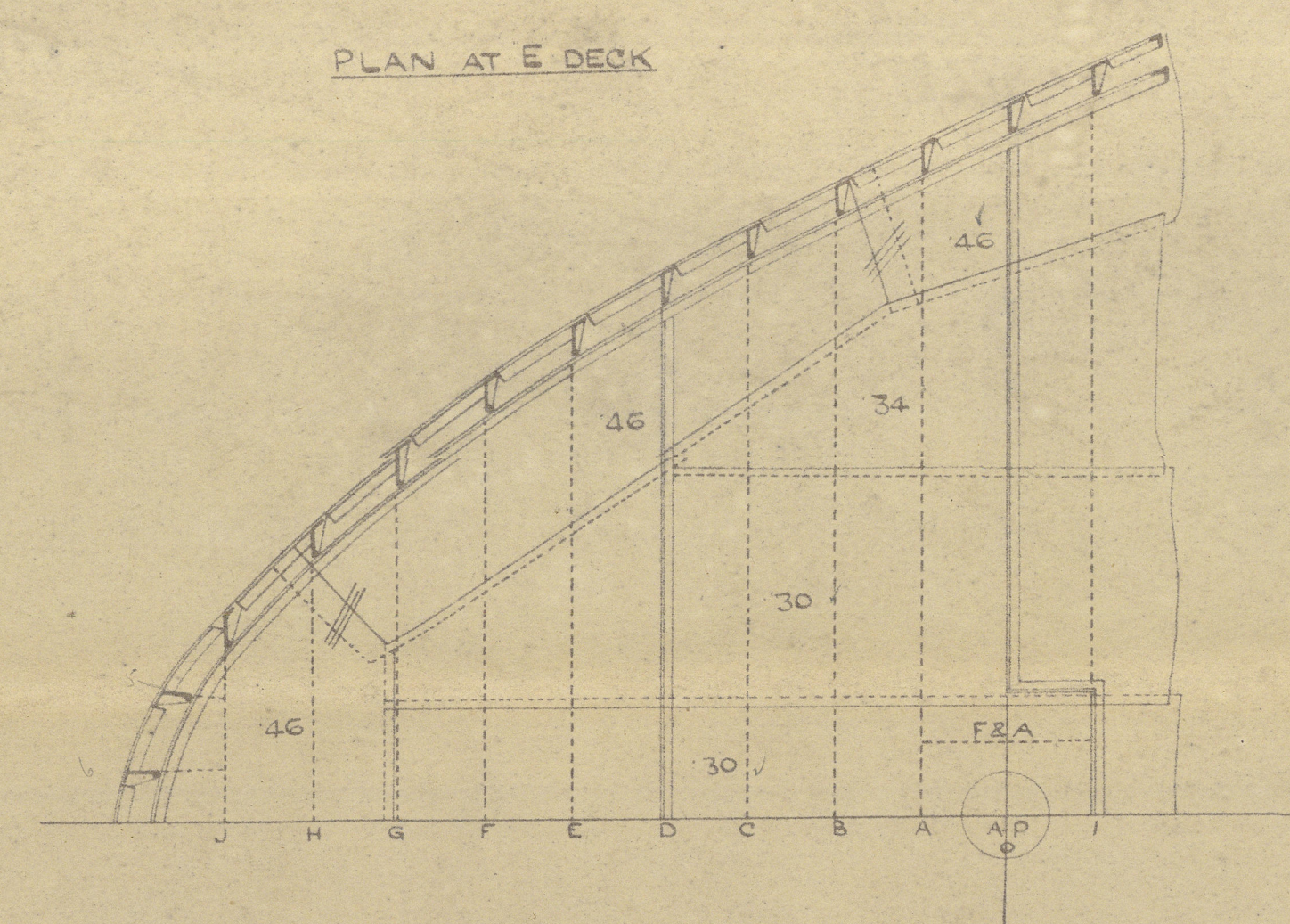
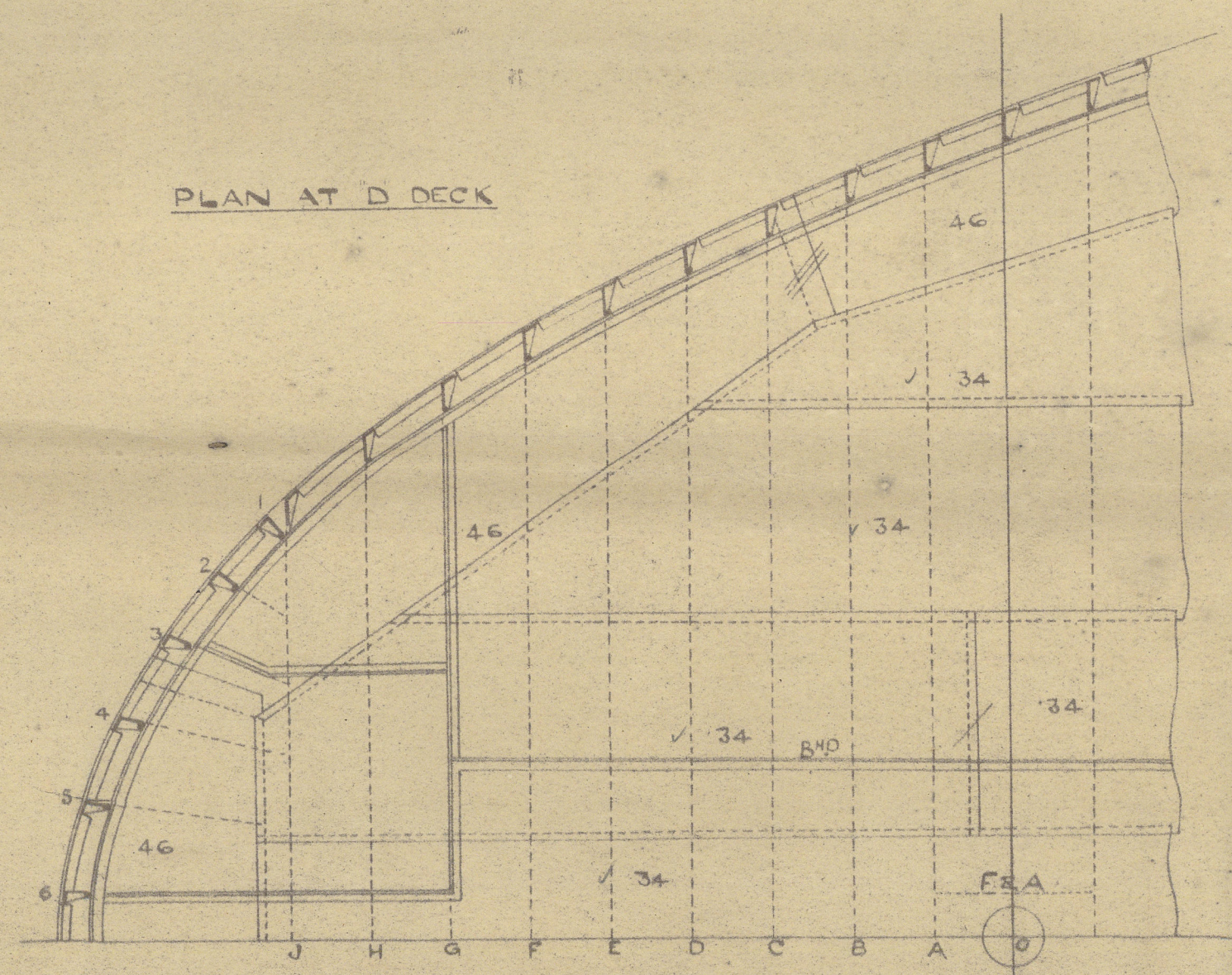


NOS 464-5. STERN FRAMING.

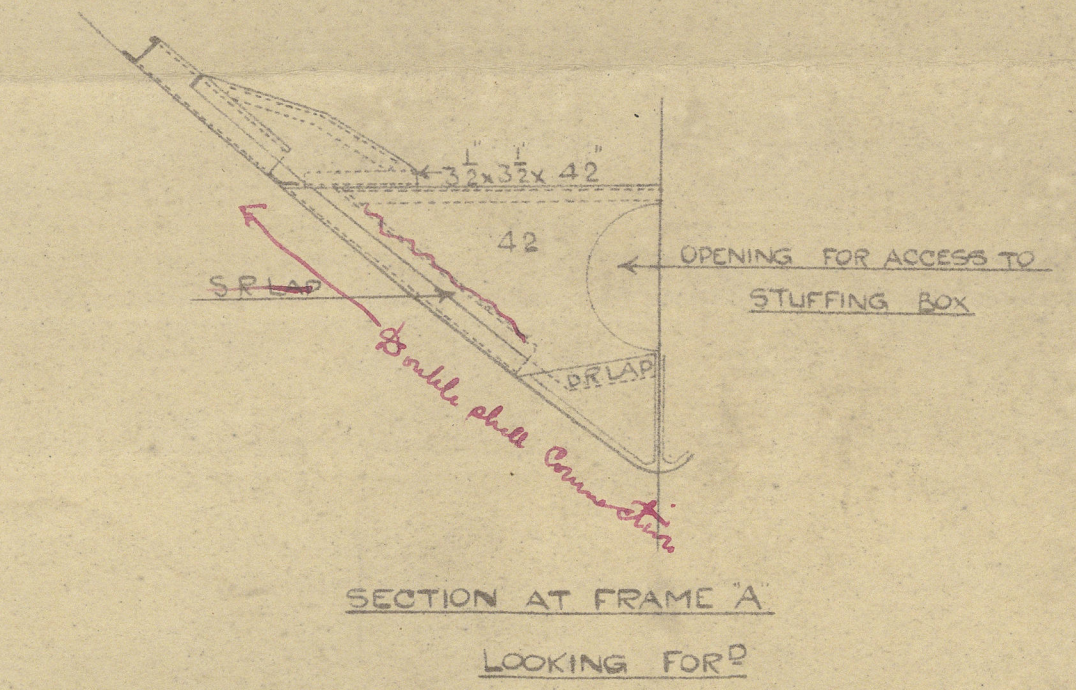
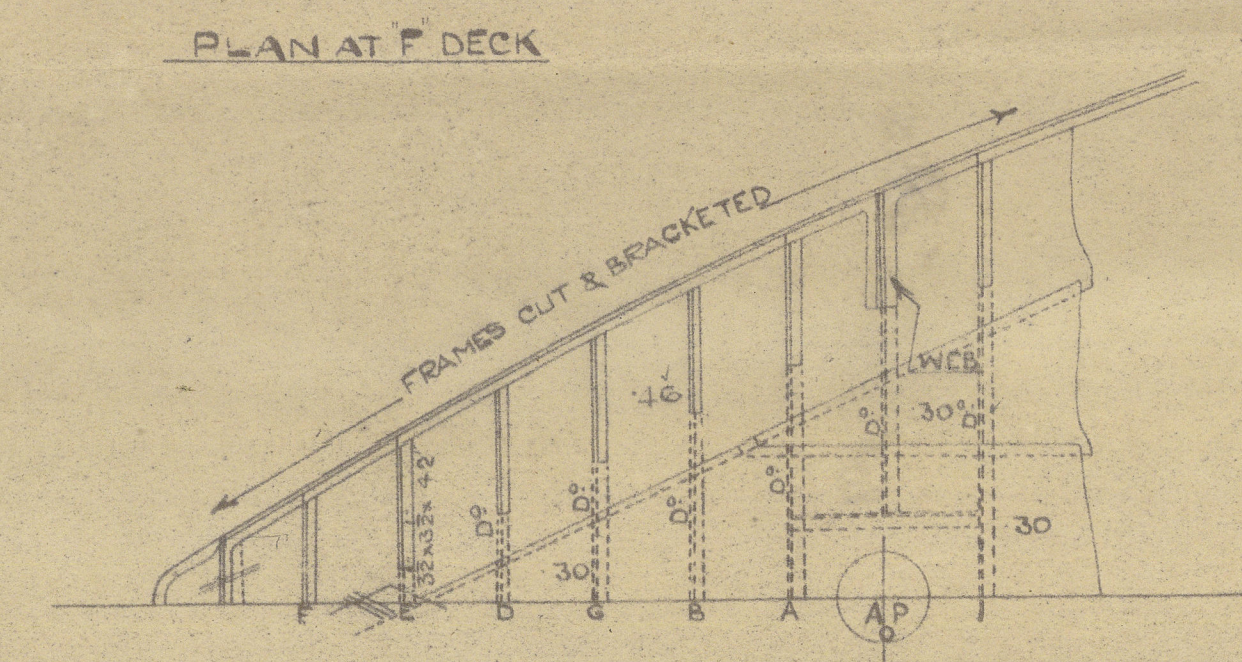
SCALE 1/4" = 1 FOOT.



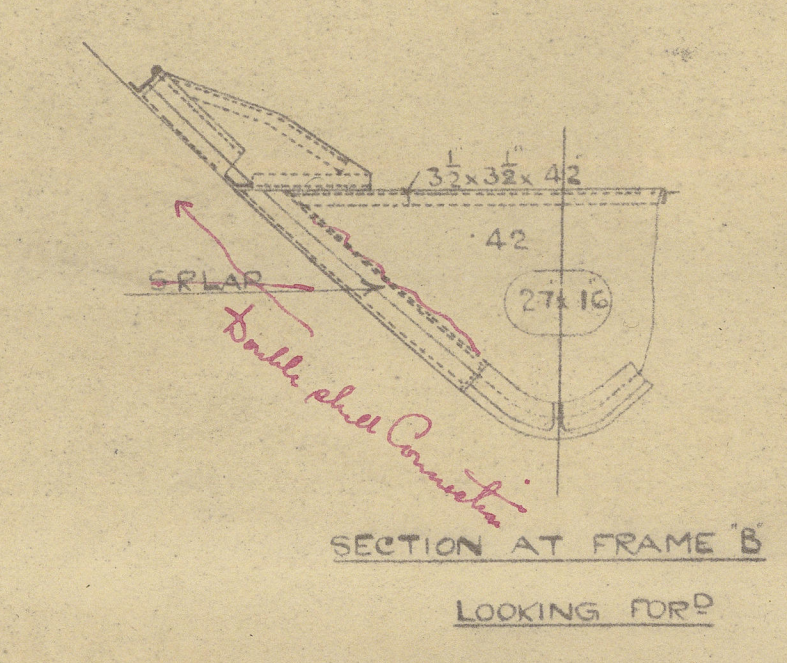
No 6 cant frame
9' 3 1/2" x 52" BA.



24.3.19.



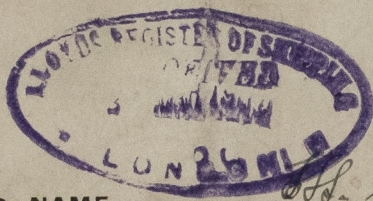
frames connected to floor with rivets not more than 8" dia. each



BUILDERS. Messrs. John Brown & Co. Ltd.,

YARD No. 464/5.

PLAN. Stern Framing.



SHIP'S NAME,

S.S. Montclair

GLASGOW REPORT No

41592

T.S.S. Montclair
GLASGOW REPORT No. 41829

T.S.S. Montclair
GLASGOW REPORT No.

42102



© 2021

Lloyd's Register
Foundation

009522-009526-0051