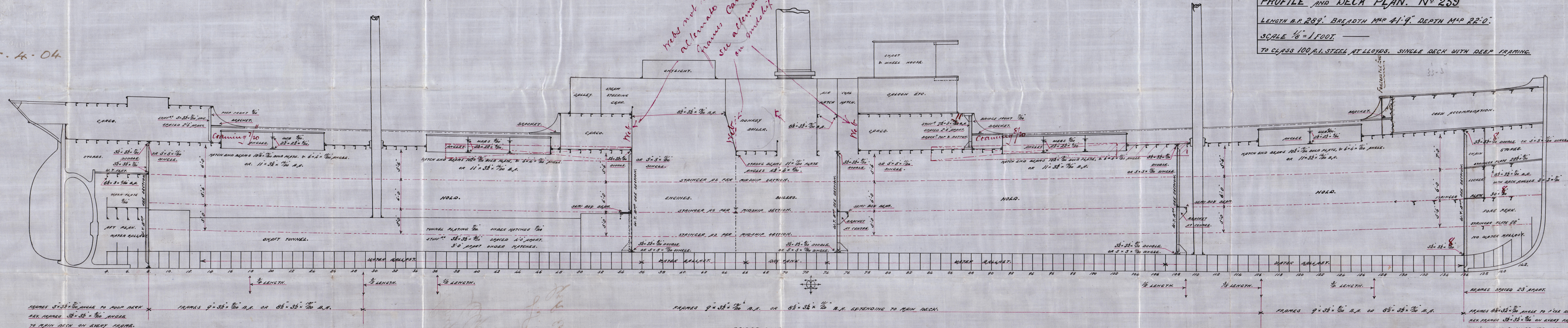


5.4.04

Rebs not required if  
alternates built up  
frames carried up  
see alternates sketch  
on end of section

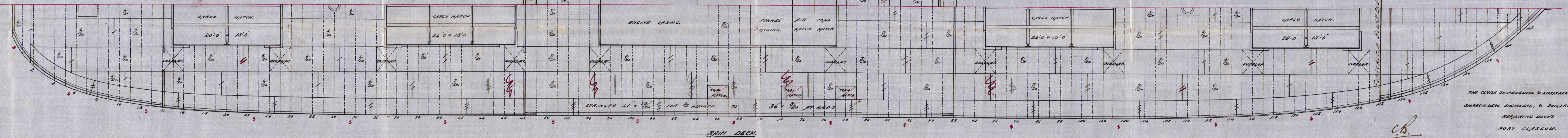
PROFILE AND DECK PLAN. N° 259  
LENGTH B.P. 289'. BREADTH M.P. 41'9". DEPTH M.P. 22'0".  
SCALE 1/8" = 1 FOOT  
TO CLASS 100 A.I. STEEL AT LLOYDS. SINGLE DECK WITH DEEP FRAMING.



FRAMES 8" x 3 1/2" x 20" A.P. OR 8 1/2" x 3 1/2" x 20" A.P. SPACING 25' APART.  
FRAMES 9" x 3 1/2" x 20" A.P. OR 8 1/2" x 3 1/2" x 20" A.P. SPACING 25' APART.  
FRAMES 9" x 3 1/2" x 20" A.P. OR 8 1/2" x 3 1/2" x 20" A.P. SPACING 25' APART.  
FRAMES 9" x 3 1/2" x 20" A.P. OR 8 1/2" x 3 1/2" x 20" A.P. SPACING 25' APART.  
FRAMES 9" x 3 1/2" x 20" A.P. OR 8 1/2" x 3 1/2" x 20" A.P. SPACING 25' APART.

ATCH FARE & INTERS.  
CENTRE FARE & INTER 10" x 3/4" BILD PLATE  
WITH DOUBLE RIGLES 22" x 22" x 1/2"  
SIDS FARE & INTERS 6" x 4" x 1/2" ICE BAR. OR WOOD 7" x 7".

BUTTS OF MAIN DECK STRINGER OVERLAPPED & TREBLE RIV'  
FOR 1/2 LENGTH. DOUBLE AT ENDS.  
BUTTS OF DECK PLATING OVERLAPPED & DOUBLE RIV'  
FOR 1/2 LENGTH. SINGLE AT ENDS.  
LARGE RIGLES FITTED AT CORNERS OF MATCH OPENINGS 5" x 5" x 1/2".



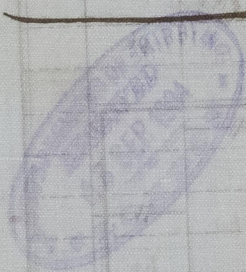
C.B.  
5.4.04

THE CLYDE SHIPBUILDING & ENGINEERING CO. LTD.  
SHIPBUILDERS, ENGINEERS, & BOILERMAKERS.  
REPAIRING DOCKS  
PORT GLENSCOE.  
TRADE MARK NO. 1274



Longitudinal Plan  
Clyde W. Egley  
JP-259.

S.S. "Silvia"  
Grh report No 14038.



© 2020

Lloyd's Register  
Foundation