

Hermia

5.4.04
ALTERNATIVE SYSTEM
OF P.B. & F.C. FRAMING
IN WAY OF HOLDS & ENG. SPACE

11/20
Butts, each riveted
Dantling
10/20
Dantling
42 x 13/20 for
3/4 L 60/20
1159
20
Dantling as per profile

Alternative
adopted

11/20
Butts, each riveted
Dantling
10/20
Dantling
42 x 13/20 for
3/4 L 60/20
1159
20
Dantling as per profile

11/20
Butts, each riveted
Dantling
10/20
Dantling
42 x 13/20 for
3/4 L 60/20
1159
20
Dantling as per profile

MIDSHIP SECTION

Nº 259

LENGTH B.P. 289'0" BREADTH M.D. 41'9" DEPTH M.D. 22'0"

SCALE 1/2" = 1'00"

CLASS 100.A.1 STEEL AT LLOYD'S SINGLE DECK WITH DEEP FRAMING

EQUIPMENT

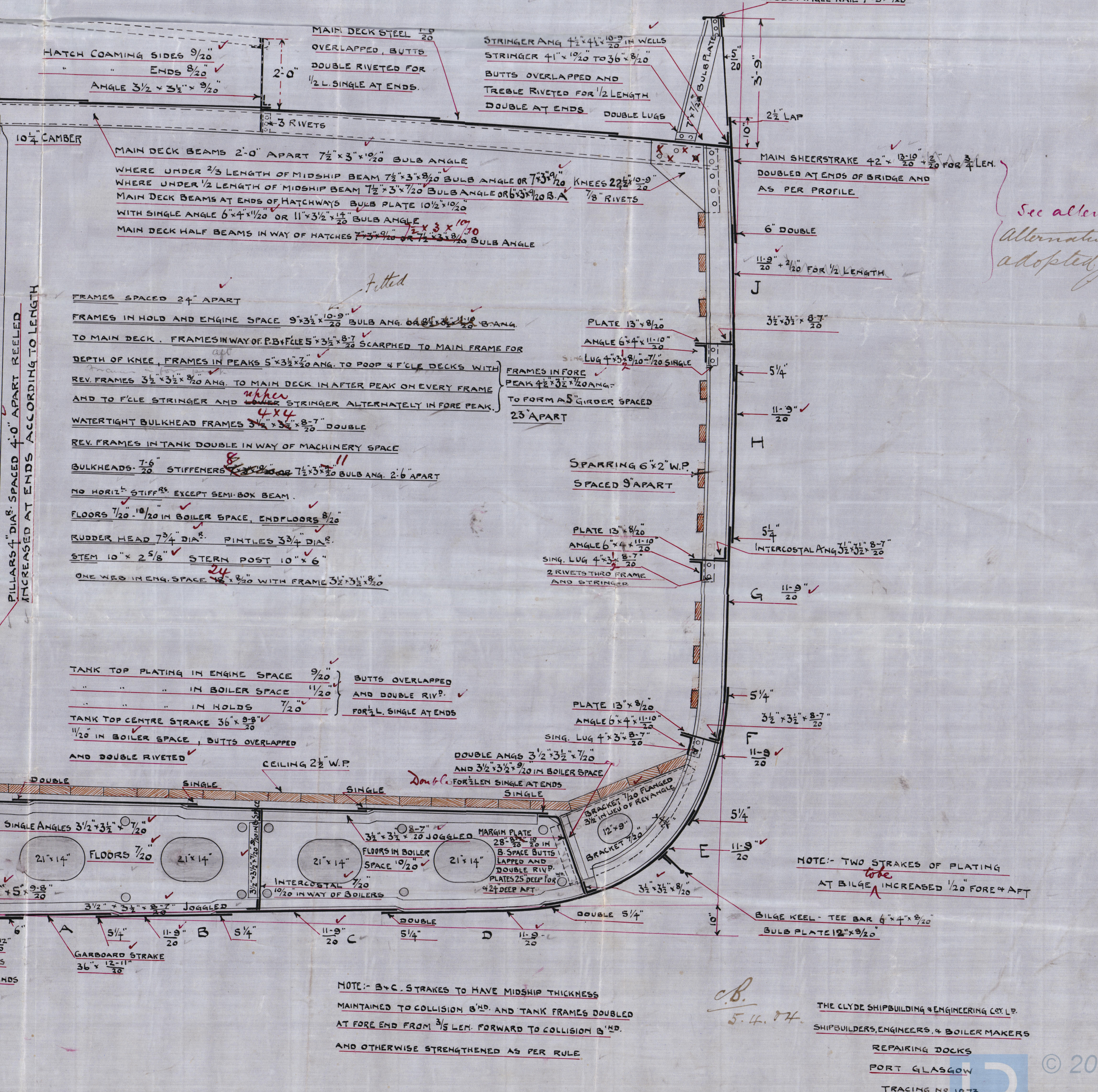
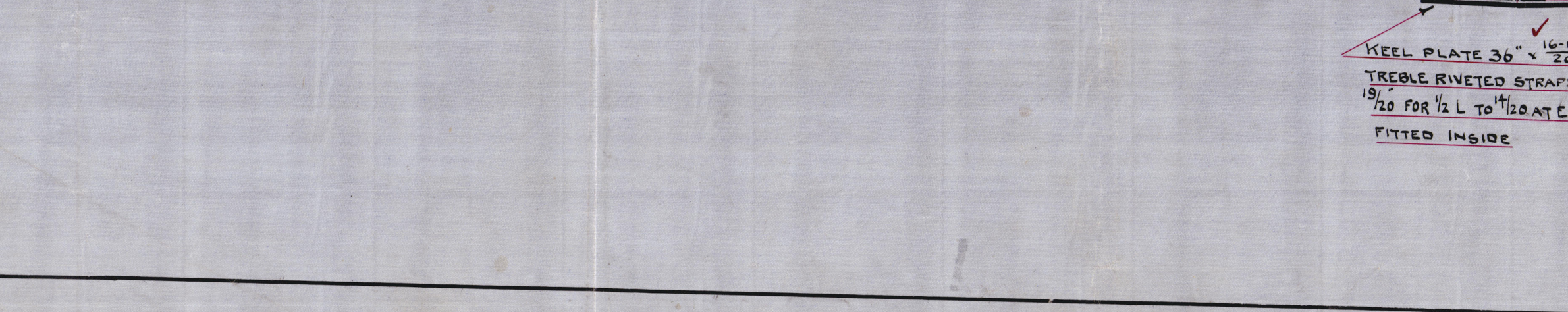
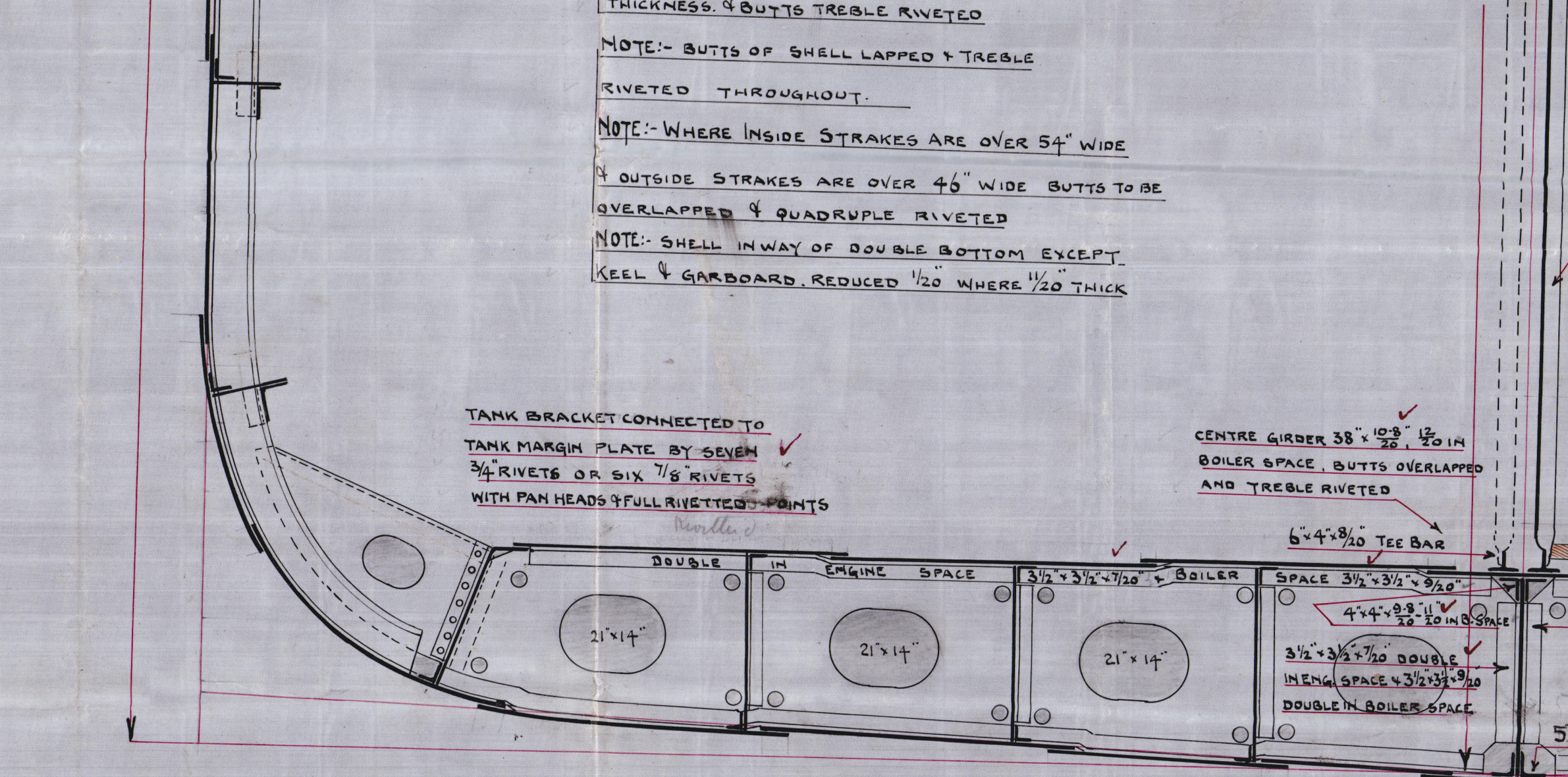
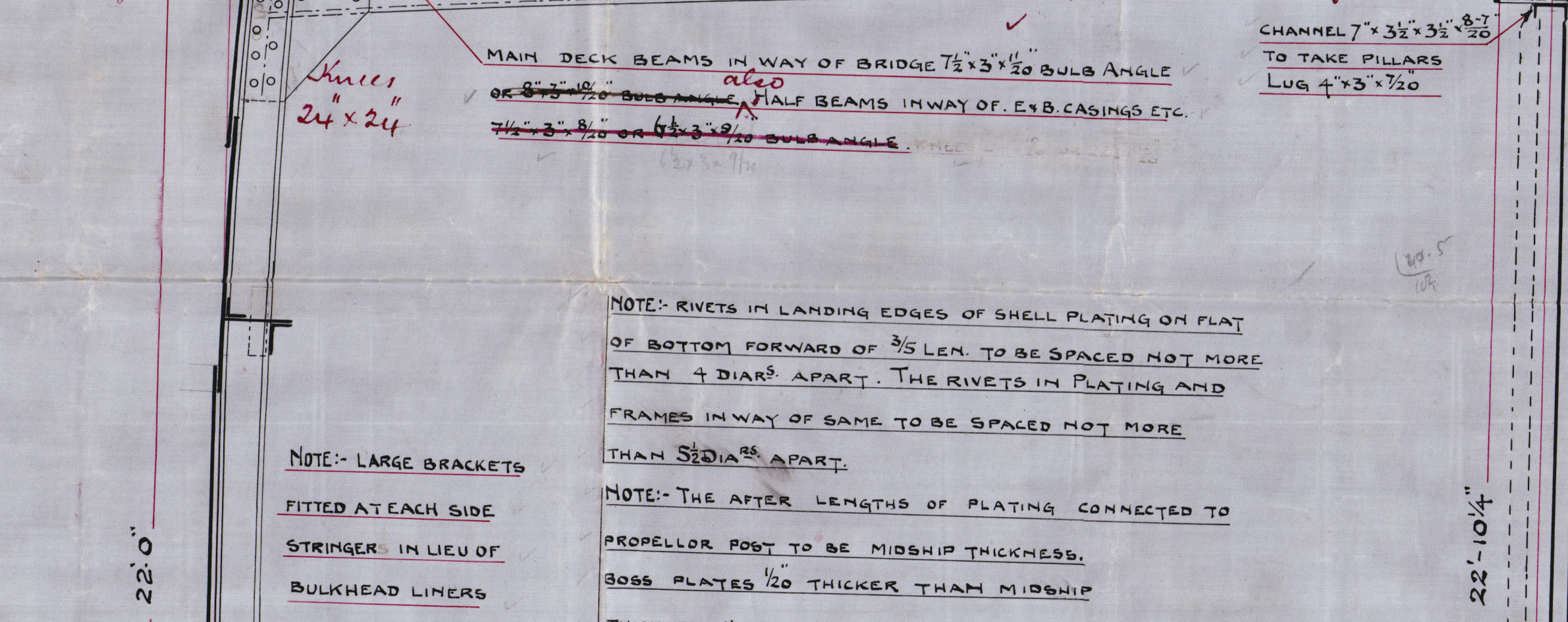
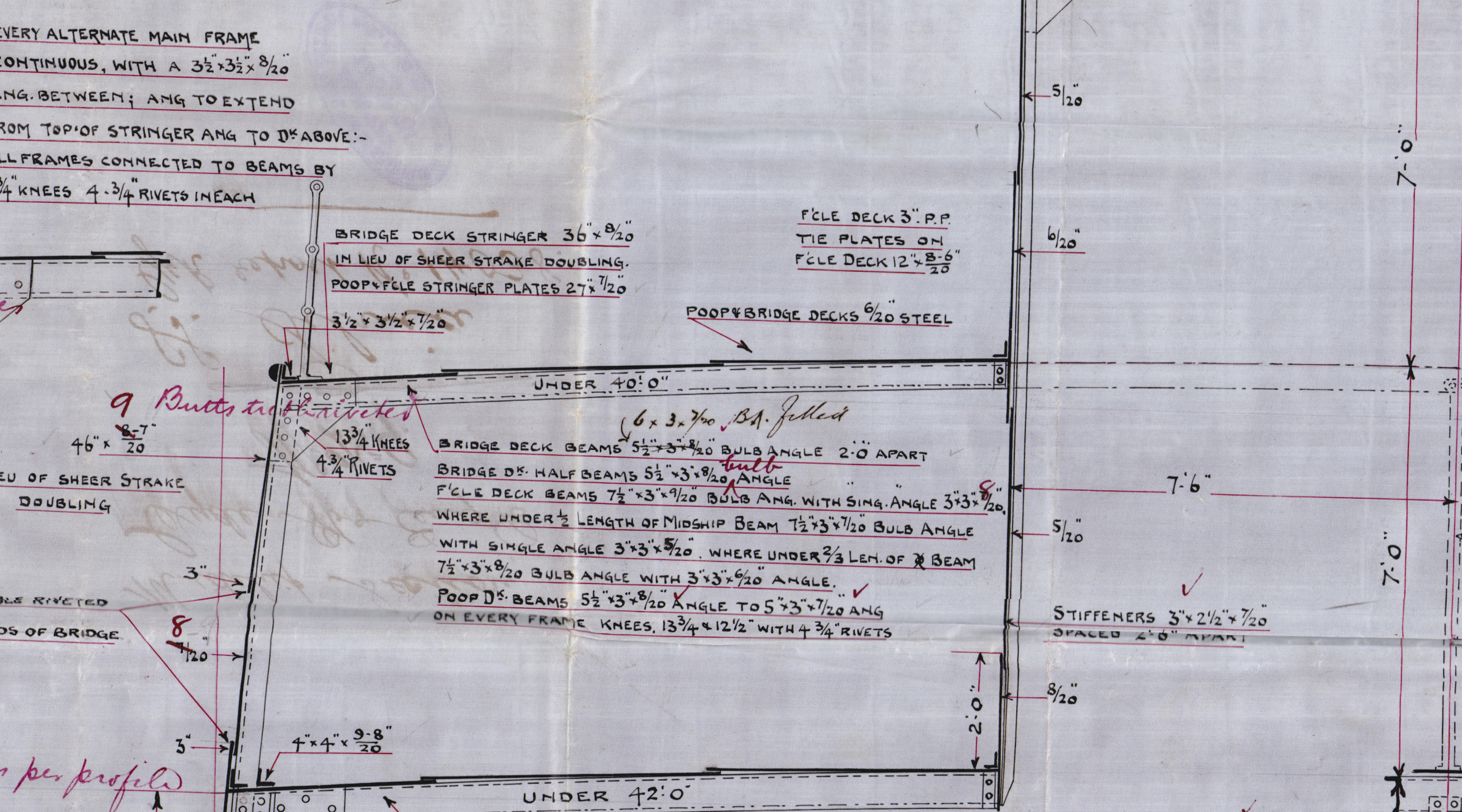
- 2 BOWER ANCHORS 38 3/4 CWT. STOCKLESS
- 1 STREAM ANCHOR 10 " EX STOCK
- 1 KEDGE ANCHOR 5 " EX STOCK
- 240 FATHOMS 1 1/2" STUD CHAIN CABLE
- 75 " 1 1/4" STREAM CHAIN OR 4 1/4" STEEL WIRE
- 90 " 4" STEEL WIRE TOWLINE
- 90 " 7" HAWSER (2 OFF) OR 2 3/8" STEEL WIRE
- 90 " 6" WARP (2 OFF)

- NUMERALS -

HALF BEAM - 20.87
HALF GIRTH - 39.79
DEPTH - 22.85
83.51 FRAMING NUMBER
LLOYD'S LENGTH - 287.33
HULL P.B. & F.C. HAVES 23994.92 2ND NUMBER
23995+1459454= 25608 EQUIPMENT NUMBER

- PROPORTIONS -

DEPTH TO LENGTH = 12.57
BREADTH TO LENGTH = 87



NOTE:- RIVETS IN LANDING EDGES OF SHELL PLATING ON FLAT OF BOTTOM FORWARD OF 3/5 LEN. TO BE SPACED NOT MORE THAN 4 DIAS. APART. THE RIVETS IN PLATING AND FRAMES IN WAY OF SAME TO BE SPACED NOT MORE THAN 5 1/2 DIAS. APART.

NOTE:- THE AFTER LENGTHS OF PLATING CONNECTED TO PROPELLOR POST TO BE MIDSHIP THICKNESS. BOSS PLATES 1/20 THICKER THAN MIDSHIP THICKNESS. 4 BUTTS TREBLE RIVETED

NOTE:- BUTTS OF SHELL LAPPED & TREBLE RIVETED THROUGHOUT.

NOTE:- WHERE INSIDE STRAKES ARE OVER 54" WIDE 4 OUTSIDE STRAKES ARE OVER 46" WIDE BUTTS TO BE OVERLAPPED & QUADRUPLE RIVETED

NOTE:- SHELL IN WAY OF DOUBLE BOTTOM EXCEPT KEEL & GABBOARD, REDUCED 1/20 WHERE 1/20 THICK

TANK TOP PLATING IN ENGINE SPACE 9/20
" " " " IN BOILER SPACE 11/20
" " " " IN HOLDS 7/20
TANK TOP CENTRE STRAKE 36 x 9 3/4
11/20 IN BOILER SPACE, BUTTS OVERLAPPED AND DOUBLE RIVETED

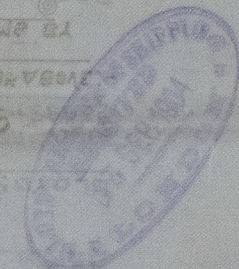
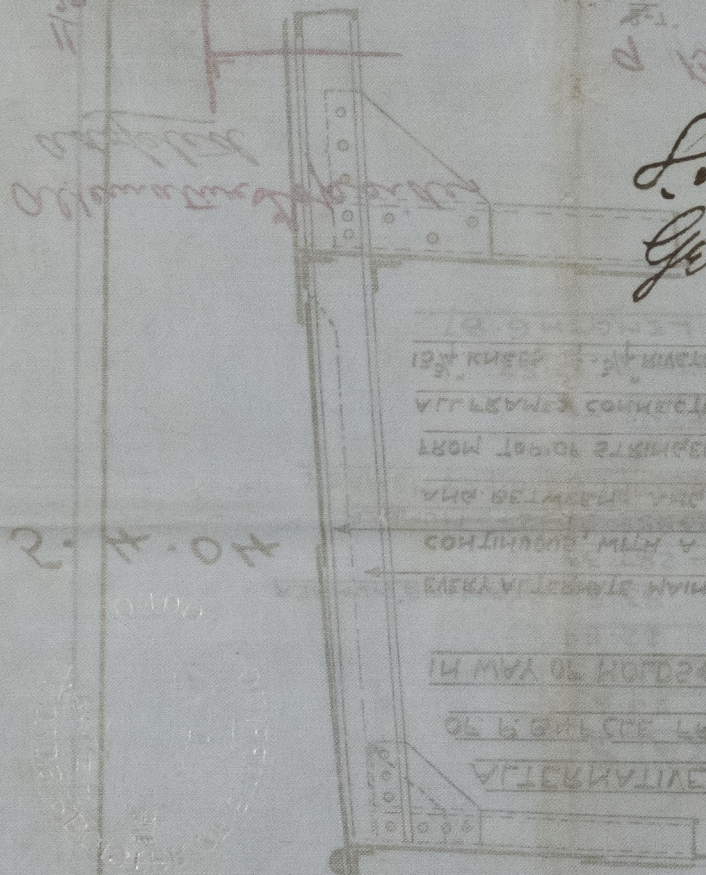
NOTE:- B.C. STRAKES TO HAVE MIDSHIP THICKNESS MAINTAINED TO COLLISION 8" AND TANK FRAMES DOUBLED AT FORE END FROM 3/5 LEN. FORWARD TO COLLISION 8" AND OTHERWISE STRENGTHENED AS PER RULE

NOTE:- TWO STRAKES OF PLATING AT BILGE INCREASED 1/20 FORE & AFT

THE CLYDE SHIPBUILDING & ENGINEERING CO. LTD.
SHIPBUILDERS, ENGINEERS, & BOILER MAKERS
REPAIRING DOCKS
PORT GLASGOW
TRACING Nº 1273

Midship Section
Clyde No 259

S.S. Silvia
G.R. report No 14038.



© 2020

Lloyd's Register
Foundation