

# N<sup>os</sup> 285 & 6. MIDSHIP SECTION.

DIMENSIONS: 3 1/2' 0" B.P. x 52' 0" x 28' 0" MLD TO SPAR DECK.

20' 0" MLD TO MAIN DECK.

TO CLASS 100A1. AT LLOYD'S. SPECIAL SURVEY, SPAR DECK RULE.

WITH THREE DECK MINIMUM FREE BOARD

SCALE 1/2" = ONE FOOT.

STEEL DECK 120 OR 140 IRON. BUTTS LAPPED 2 R.  
WOOD DECK IN WAY OF ACCOMMODATION 2 1/2" P.W. WITH 1/2" STEEL DECK.

STRINGER 55 x 120. BUTTS

LAPPED 2 R.

PROPORTIONS.

BREADTH IN LENGTH 4.19.

DEPTH IN LENGTH TO SPAR DECK 12.86.

DEPTH IN LENGTH TO MAIN DECK 14.41.

SPAR DECK RULE

1/2 GIRTH 4348.

1/2 BREADTH 26.00

DEPTH 21.12

90.60 x 3 1/4' 16" = 3389889.

F.N.

P.N.

13' CAMBER.

ANGLE GARDER 4 1/2 x 3 1/2

BRIDGE DECK BEAMS 1 1/2 x 3 1/2 B.A. ON EVERY FRAME WITH 1 ROW OF PILLARS 2 1/2 DIA.  
D<sup>o</sup> D<sup>o</sup> D<sup>o</sup> IN WAY OF OPENINGS 5 1/2 x 3 1/2 B.A. ON EVERY FRAME. Sec. 15 para 14. & Sec. 15 para 17  
FORECASTLE DECK BEAMS 9 x 120 PLAIN BULBS & 2 ANGLES 3 1/2 x 3 1/2 ON ALT. FRAMES & 2 ROW OF PILLARS 2 1/2 DIA.  
D<sup>o</sup> STRINGER 30 x 120. STRINGER ANGLES 3 x 3 1/2 THE PLATES 10 x 120. DECK 5.3 P.P.  
POOP DECK BEAMS 6 x 3 1/2 B.A. ON EVERY FRAME WITH 1 ROW OF PILLARS 2 1/2 DIA. & 1/2 STEEL DECK

STEEL DECK 120 OR 140 IRON. BUTTS LAPPED 2 R. AT ENDS  
(SPAR DECK PLATING JOGGED IN WAY OF BRIDGE & FILE.)

STRINGER 60 x 120 FOR 1/2 L. TO 1/2 R. AT ENDS. 120 IN BRIDGE.  
60 x 120 x 1/2 L. & 1/2 R. AT ENDS. 120 IN BRIDGE.  
BUTTS LAPPED 2 R. AT ENDS. 3 R. IN BRIDGE.

3 R. IN BRIDGE

EQUIPMENT NUMERALS.

1/2 GIRTH TO SPAR DECK 5143.

1/2 BREADTH 26.00.

DEPTH TO SPAR DECK 2908.

106.51.

LENGTH 3 1/4' 16.

39851.78.

ERECTIONS 1476.06.

EQUIPMENT NUMERAL 4162484.

EQUIPMENT.

ONE BOWER ANCHOR 56 1/4 CENTS STOCKLESS.

ONE D<sup>o</sup> D<sup>o</sup> 56 1/4 D<sup>o</sup> D<sup>o</sup>

ONE D<sup>o</sup> D<sup>o</sup> 4 1/2 D<sup>o</sup> D<sup>o</sup>

ONE STREAM D<sup>o</sup> 15 D<sup>o</sup> EX 5 DGR.

ONE KEDGE D<sup>o</sup> 6 1/2 D<sup>o</sup> D<sup>o</sup> D<sup>o</sup>

270 FATHOMS 2 1/2" STUD CHAIN CABLE.

90 D<sup>o</sup> 1 1/2" STREAM CHAIN OR 4 1/2 S.W.

120 D<sup>o</sup> 13" HEMP OR 4 1/2 S.W.

4-90 D<sup>o</sup> 1" HANSE OR 2 1/2 S.W.

RIVETING

RIVETS THRO' FRAMES & REVERSE FRAMES, THRO' SHELL PLATING 1/2 DIA. 6" to 6 1/2".

RIVETS IN SHELL & STRINGER BUTTS 3/8 DIA. 6" to 6 1/2". 4 DIA. IN 4 R. BUTTS.

1 - BUTTS & EDGES OF INNER BOTTOM PLATING 1/2 DIA. 6" to 6 1/2".

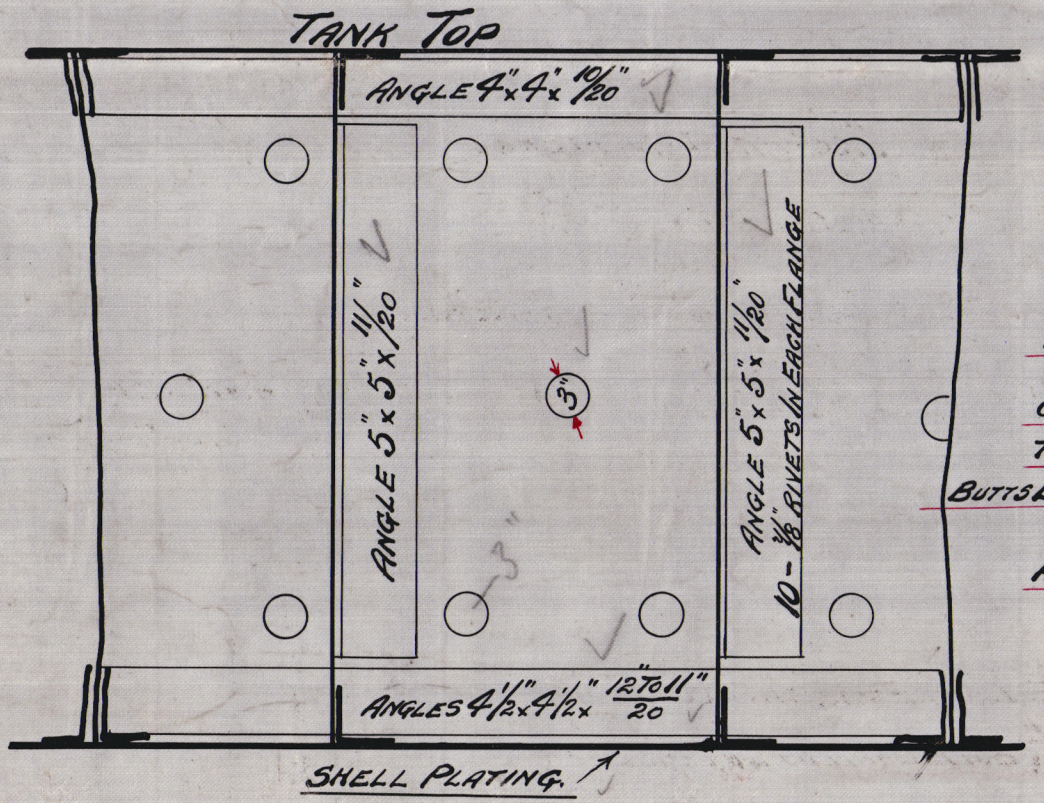
BEFORE 1/2 L. RIVETS IN LANDING EDGES OF STRAKES FORMING FLAT OF BOTTOM 1/2 DIA. 6" to 6 1/2".

IN PLATING & BOTTOM FRAMES 5/8 DIA. 6" to 6 1/2".

RIVETS THRO' FRAMES, REV. FRAMES & THRO' SHELL PLATING IN WAY OF DEEP TANK 6 DIA. 6" to 6 1/2".

BEAM KNEE  
BULB ANGLE BEAM  
REVERSE FRAME 1/2 x 3 1/2 x 120 to 120.  
FRAME 5 1/2 x 3 1/2 x 120 to 120.

SECTION OF DEEP FRAMING & BEAM KNEE





Revised Midship Section  
Ground Lpk D 7 C.  
N<sup>o</sup> 285 + 6

N<sup>o</sup> 285: L.S. Skathawon  
Lpk report N<sup>o</sup> 14949

N<sup>o</sup> 286: L.S. Skathallan  
Lpk report N<sup>o</sup> 15055



© 2020

Lloyd's Register  
Foundation