

Nos 150-1

# STERN FRAME & RUDDER

SCALE  $\frac{1}{2}"$ ,  $1" = 1'-0"$

LLOYD'S & KAIJIKYOKAI'S TEST CERTIFICATE  
REQUIRED

|       |                |
|-------|----------------|
| A     | 164.88 \$      |
| D     | 3.87           |
| A x D | 638.09         |
| SPEED | UNDER 15.0 KT. |

*Stern frame to be connected to the transom plate  
by two double riveted angles.  
Transom plate to be 5/4" thick  
at least 52" in depth.*

COUPLING & GUDGEON A

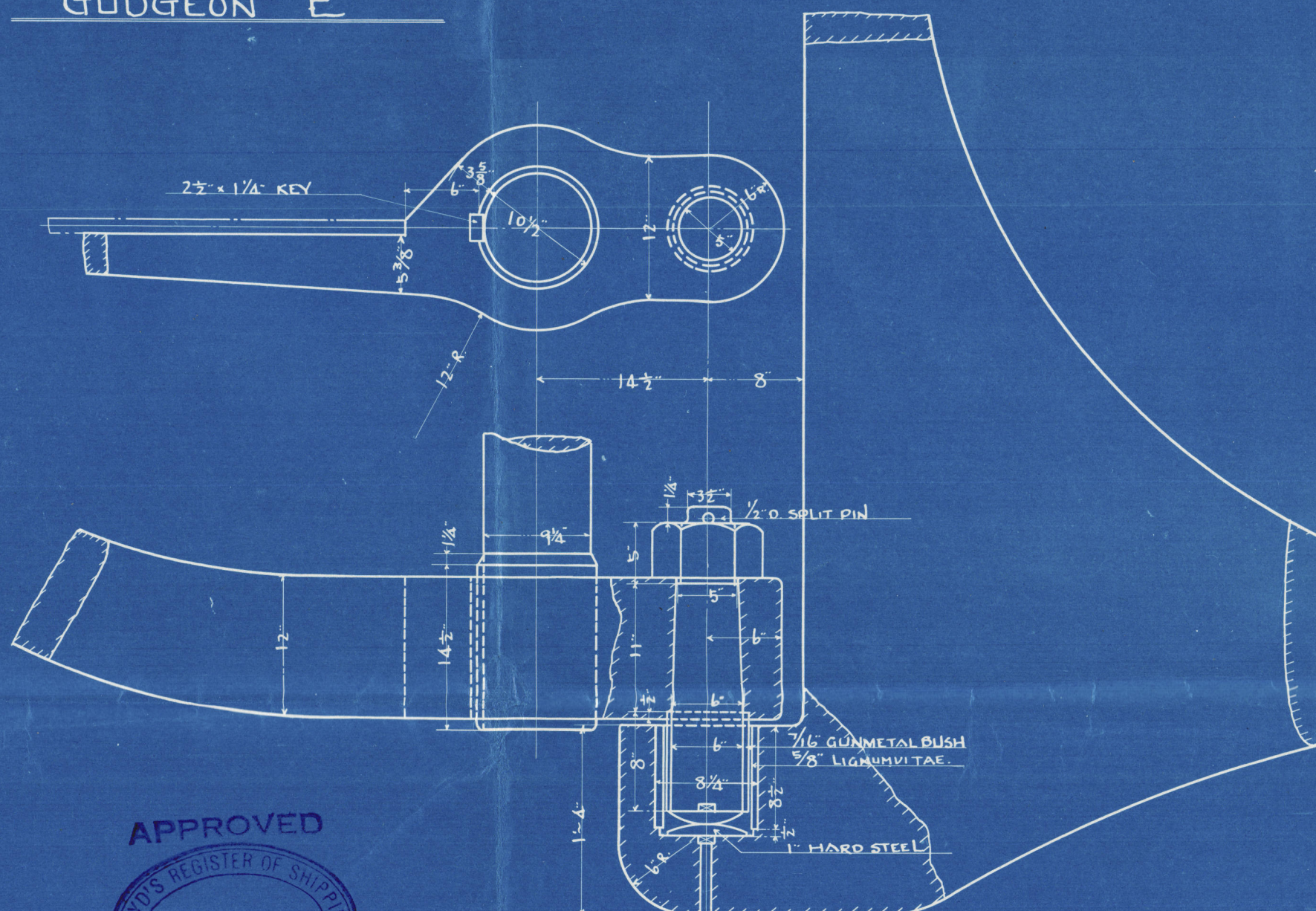
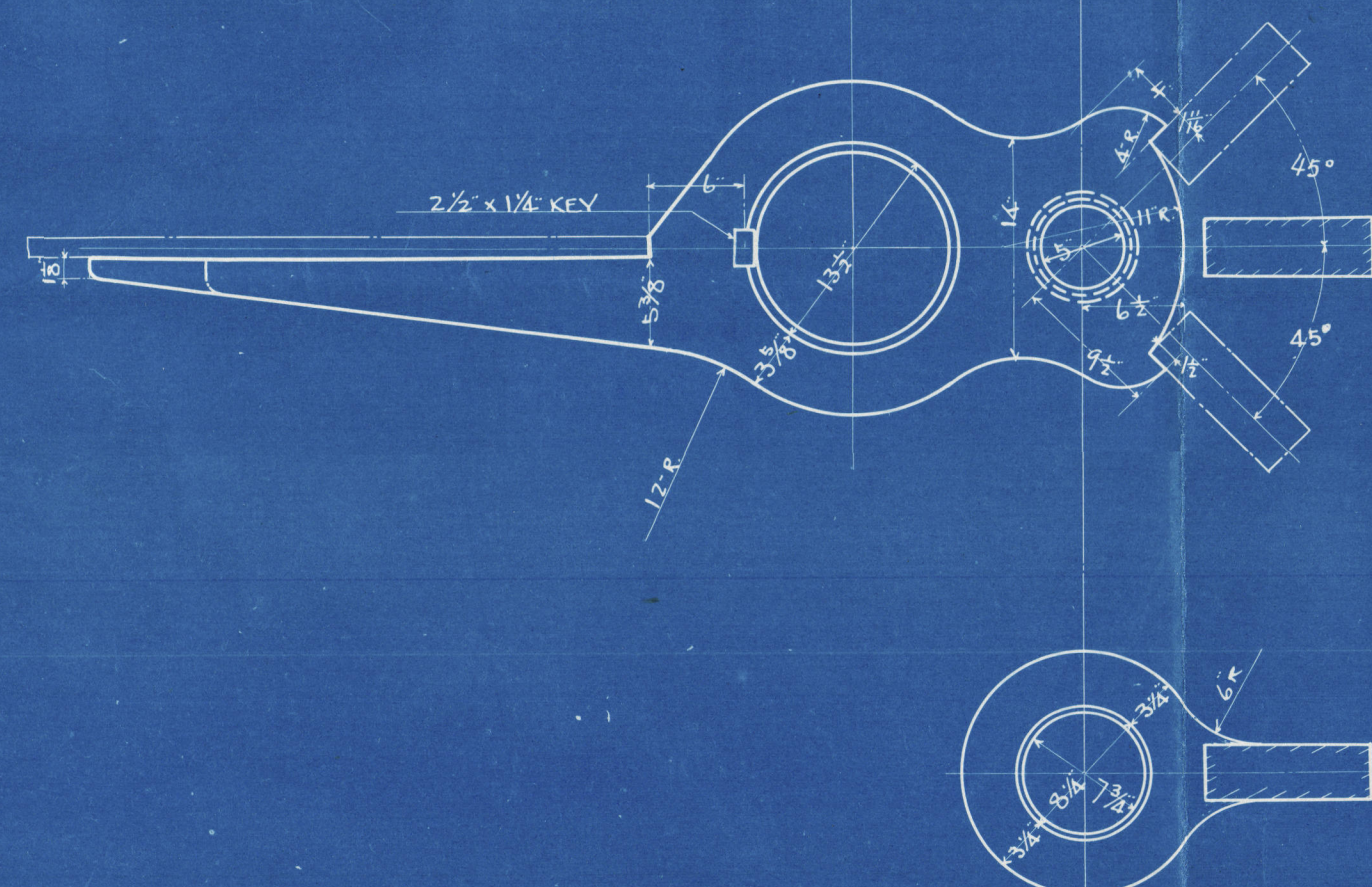
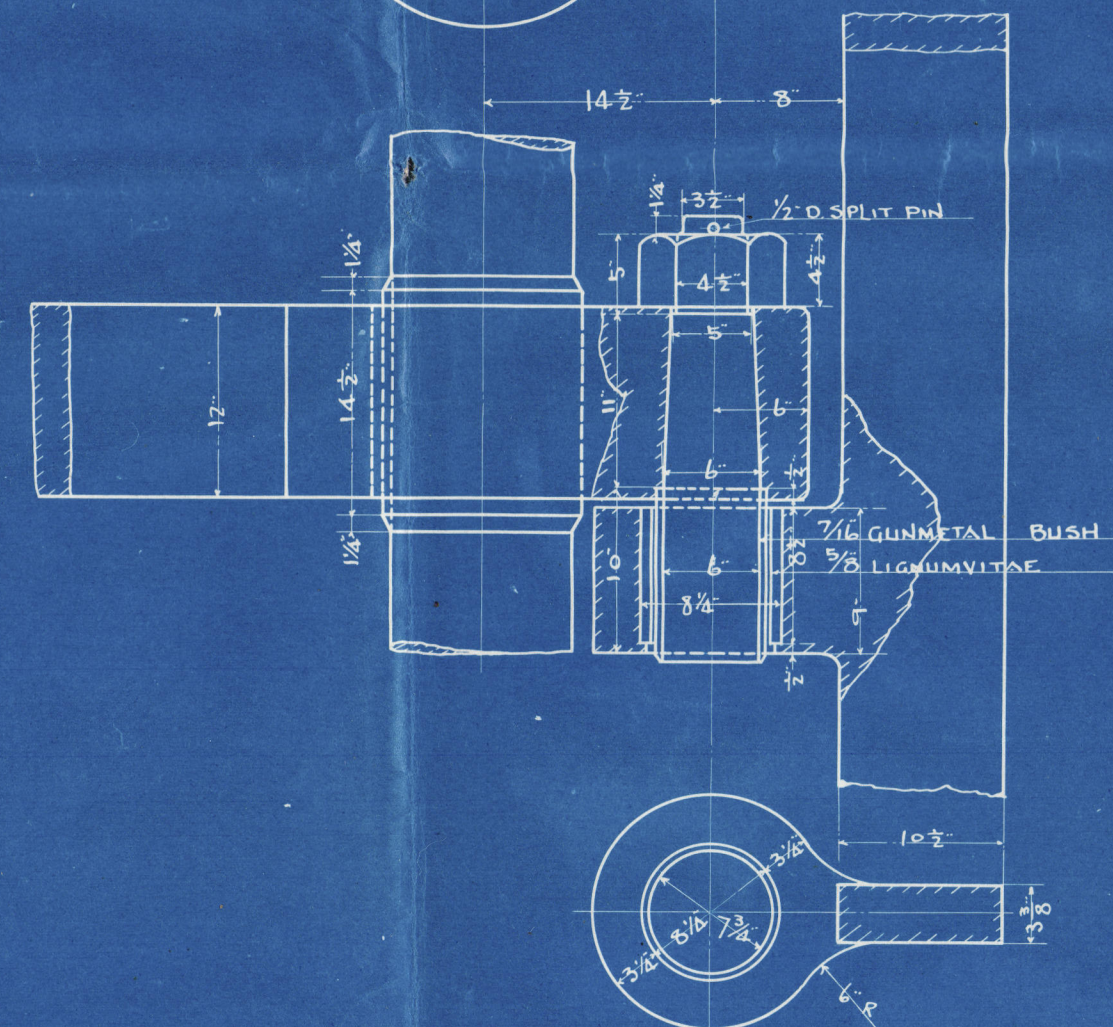
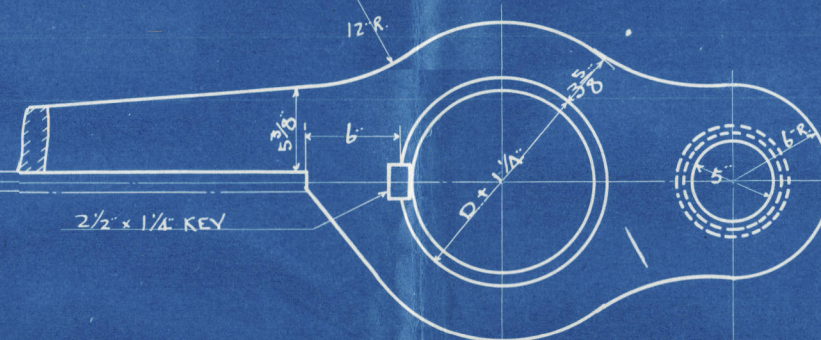
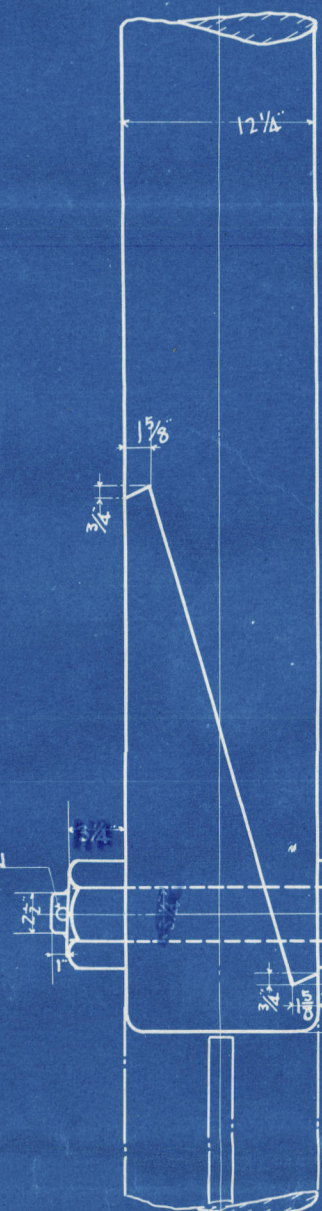
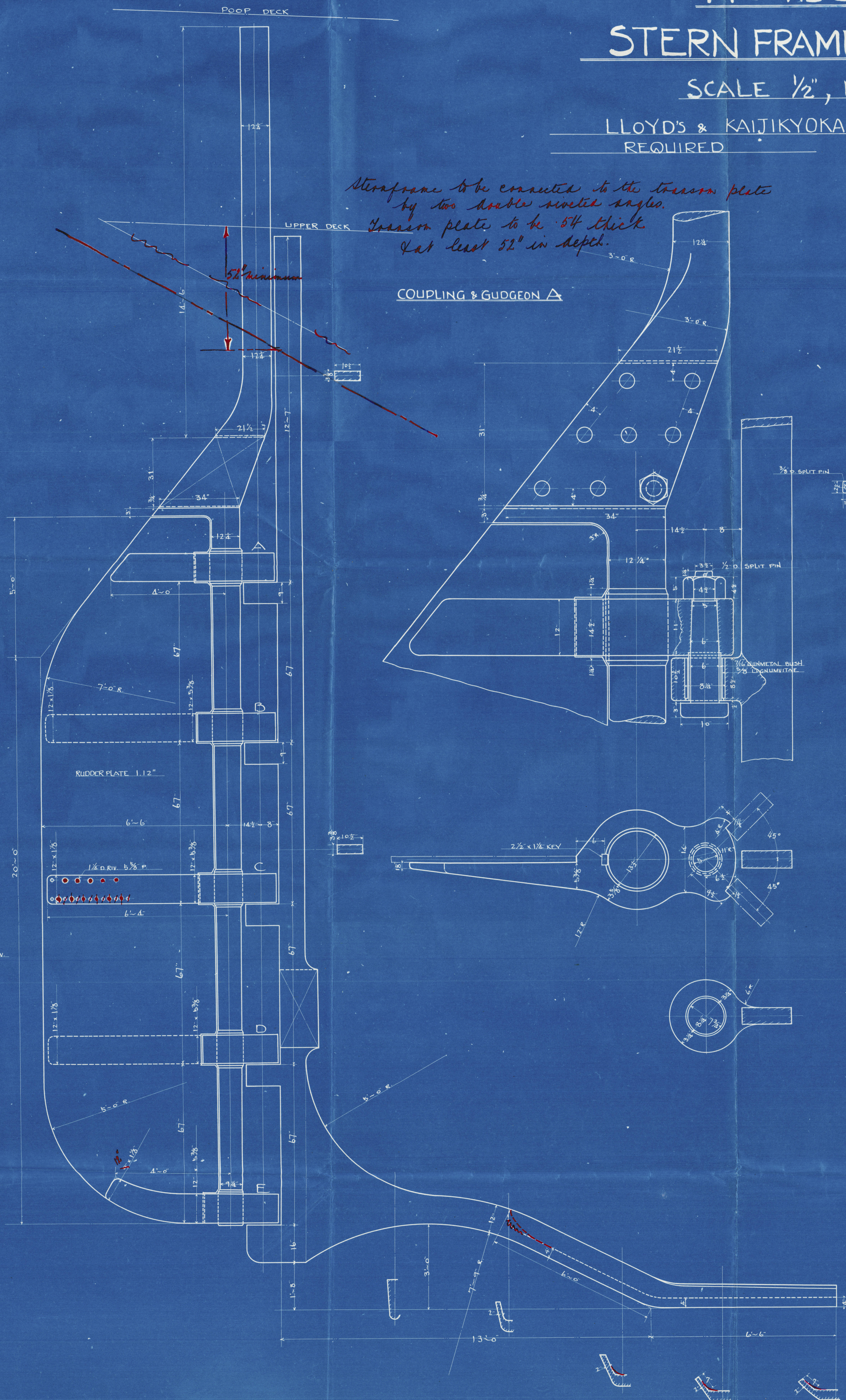
## MATERIALS

RUDDER HEAD MAIN PIECE — FORGED STEEL  
STERN FRAME & RUDDER ARMS — CAST STEEL  
PINTLES — FORGED STEEL

GUDGEON B, C & D

GUDGEON E

SCARPH



*Reviewed for H.G.C.*



Lloyd's Register of Shipping  
Foundation  
003429-009422-0291



*Sternframe & Rudder.*

GEN. BOX NO

*448*

*Asubacan Man*



© 2021

Lloyd's Register  
Foundation

009459-009468-0391