

— N^o 263 —

RUDDER PLAN

DALES PATENT RUDDER.

SCALE $\frac{1}{2}$ " = 1 FT.

ARMS AT EACH PINTLE & KEYED TO MAINPIECE.

COUPLING
SCALE 1" = 1 FT.

6 BOLTS
 $1\frac{3}{4}$ " DIA.

FEATHER $2\frac{1}{4}$ " x $1\frac{1}{4}$ "

PLATE .96" THICK.
RIVETS $\frac{1}{8}$ " DIA SPACED $4\frac{1}{2}$ "
APART CR TO CR & REELED
RIVET HOLES $1\frac{1}{8}$ " DIA.
COUNTER SUNK.

CORRECT POSITION OF GUDGEONS TO BE TAKEN FROM STERN POST.

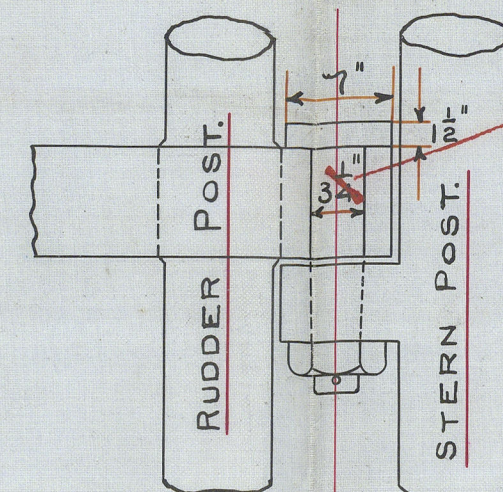
TOTAL LENGTH 32'-4"

AREA OF RUDDER 84.12 SQUARE FEET.

CR. OF GRAVITY 2.4 FT. AFT OF CR. OF PINTLES.

SPEED LESS THAN 10 KNOTS N^o 201.

A = 82.52
CG = 2.47
No = 203.8



LOCKING PIN.

SCALE 1" = 1 FT.

RUDDER STOPPERS A & B.

SCALE 3" = 1 FT.

TEMPLATE FOR STOPPERS
WILL BE SENT.

RUDDER PINTLES.

SCALE 3" = 1 FT.

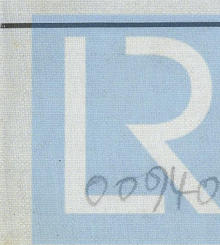
RUDDER POST SWELLED $\frac{3}{8}$ "

IN WAY OF ARMS.

PLATE .96" THICK.

RUDDER

STERN POST.



© 2020

Lloyd's Register
Foundation

S.S. 'Rondo'

Std. Rpt. No. 25290.

Rudder

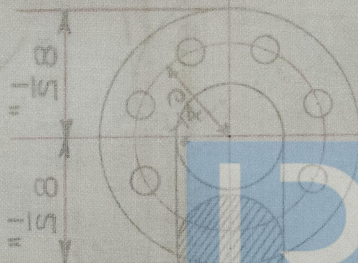
L.P. Austin & Son

No 263 & 4

Std. Rpt. 25404

Williamson

SCALE 1" = 1 FT.
COMPLING



LLOYD'S REGISTER

Lloyd's Register
Foundation

SCALE 1/2" = 1 FT.

DAVEES PATENT RUDDER

RUDDER PLATE

No 263

009401 - 009408 - 0094