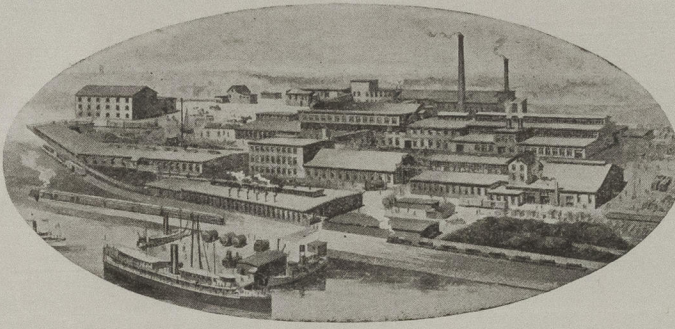


ESTABLISHED 1846

THE PORTLAND COMPANY

BUILDERS OF

STATIONARY
TANKS
S - FLUES
ER MILL
BRONZE
RS
SODA



WOODEN
STEAM VESSELS
PASSENGER AND FREIGHT
OTTER TRAWLERS
TOW BOATS
MARINE ENGINES
COMPOUND AND TRIPLE
EXPANSION

PORTLAND, MAINE, U. S. A.

Mr. John Shaw Heck.,
#89 State St.,
Boston, Mass.

DATE Oct. 28, 1919.

Dear Sir:-

The Easing Gear has been installed on the Str. Ripogenus and is reported to work smoothly and requires very little effort to operate it. The B/P showing the layout is enclosed.

Quotations are based upon our regular terms and are subject to change without notice and to previous sale. Payments are contingent upon strikes, riots, lockouts, fires, floods, accidents, inability to secure cars or transportation, or other cause of delay beyond our control.

YOURS VERY TRULY

IL/MC.
Enc.

THE PORTLAND COMPANY

BY Milton L. Libby

Ass't Supt.

© 2020
Lloyd's Register
Foundation
009387-009400-0072