

20.8.13

PLAN No. 3246
FOR ENCLOSURE TO
Messrs Lloyd's Surveyors
Hull FROM
COCHRANE & SONS, LTD.
SHIPBUILDERS, SELBY.
DATE 18/8/13.

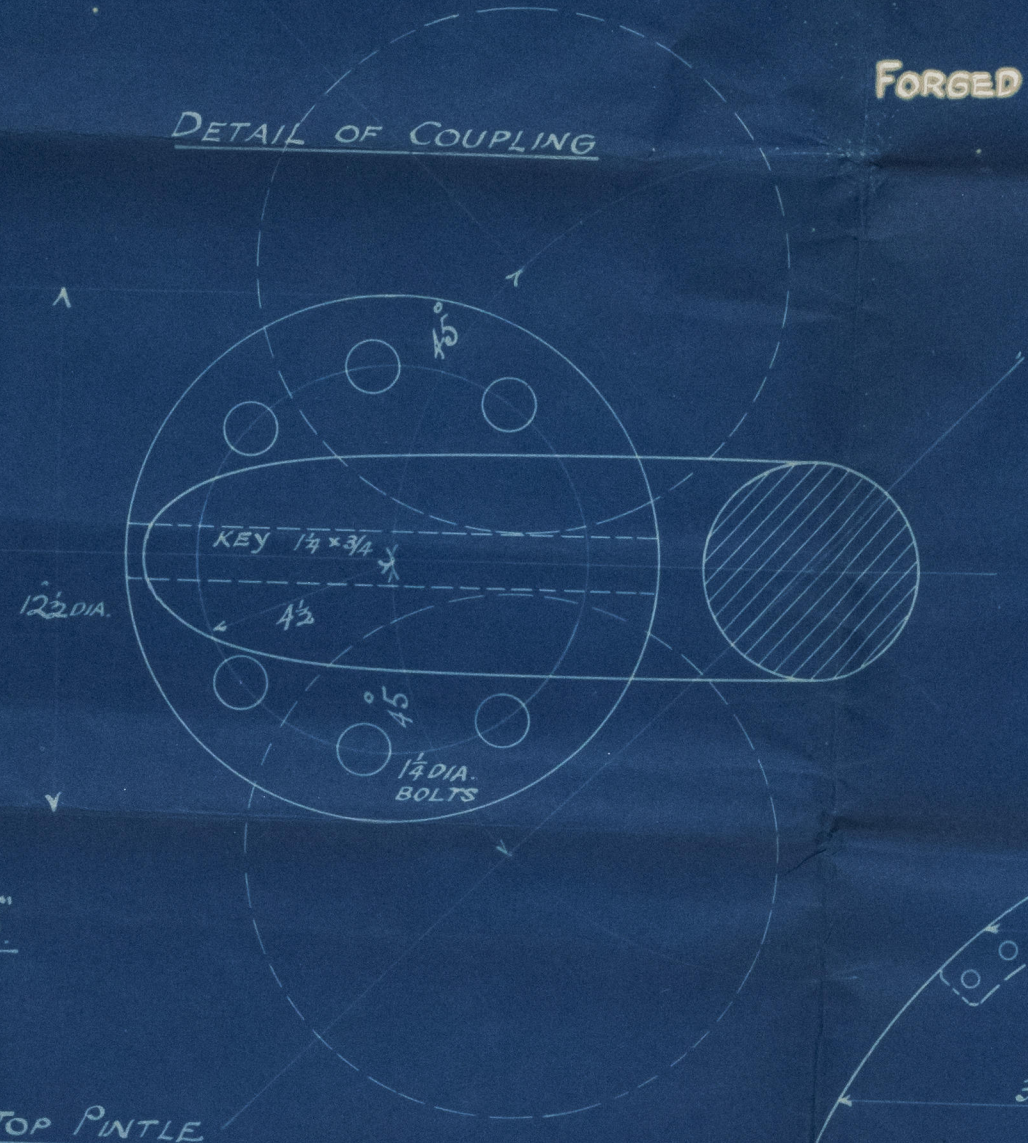
— $\frac{9}{8}$ No 594 —

— RUDDER-FRAME —

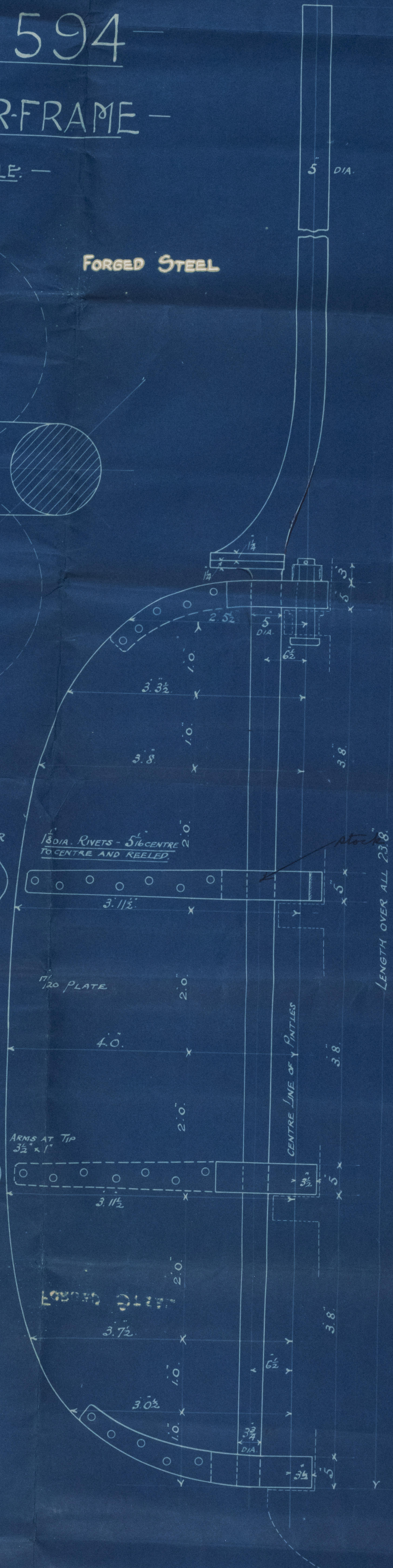
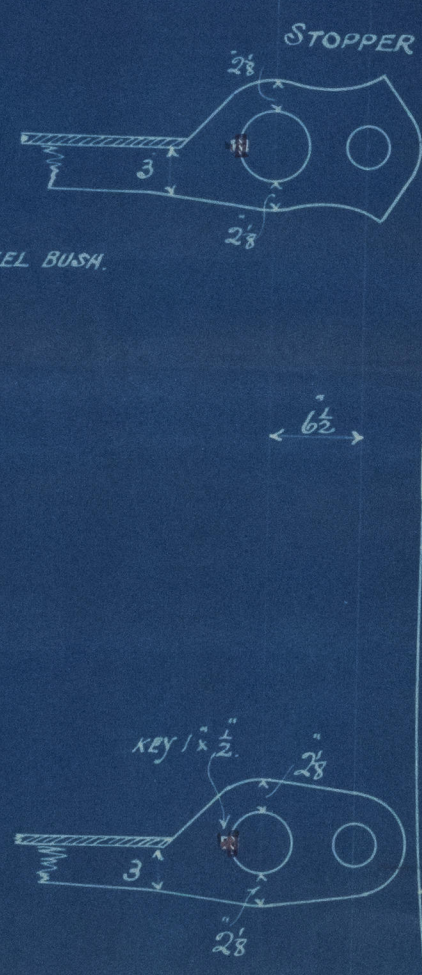
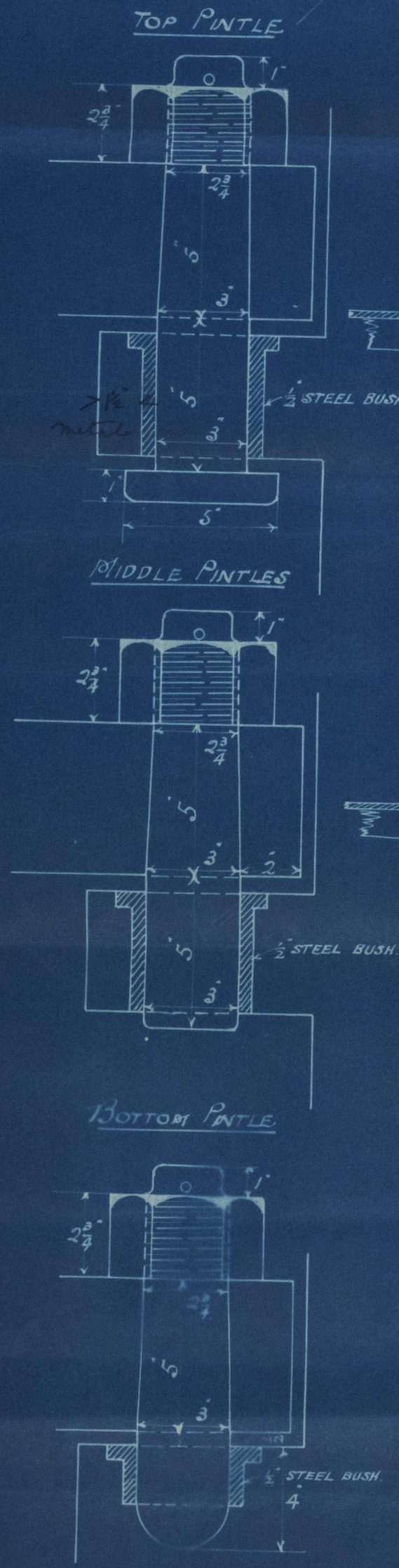
— 1" SCALE. —

FORGED STEEL

DETAIL OF COUPLING



SCALE FOR DETAILS 3"



10 KNOTS
SPEED NOT EXCEEDING

A = 38.83
D = 2.04
A x D = 79.21
SPEED NOT EXCEEDING
10 KNOTS

ORRIS
19.8.13

20.8.13.



Lloyd's Register
Foundation

Cochran & Sons,

N^o 594

Rudder.



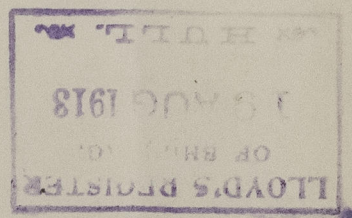
s/s 'maroc'

Hull Rph No 27354



004376-007386-0090

004376-007386-0090



© 2021

Lloyd's Register
Foundation