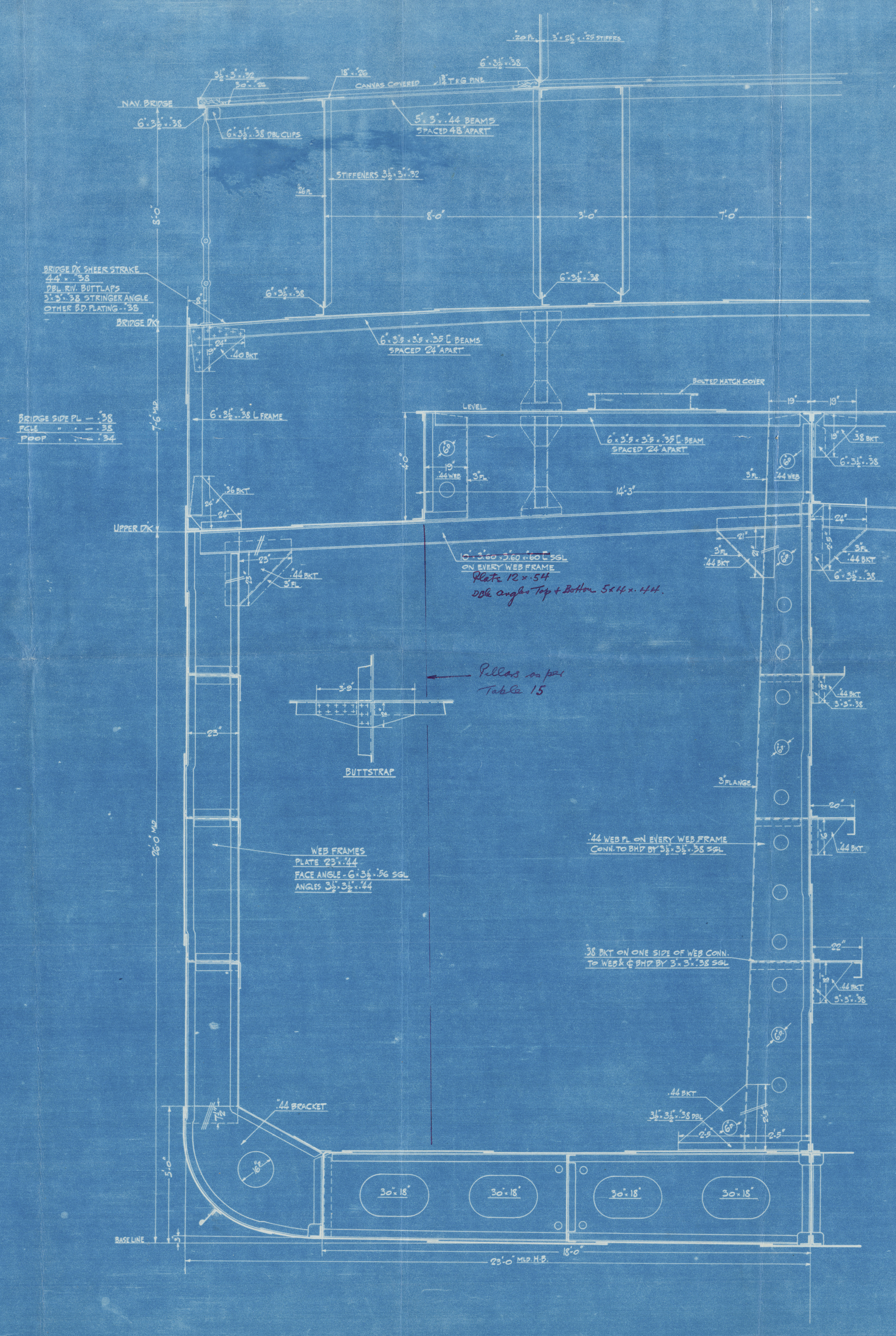


ORDINARY FRAMING IN OIL TANKS



WEB FRAMES IN OIL TANKS

PRINCIPAL DIMENSIONS

LENGTH OVERALL	33'-0"
LENGTH BET. PP	31'-0"
BEAM MLT	46'-0"
DEPTH MLT	26'-0"
DEFT LOADED	22'-0"

LODGE REGISTER

CLASS	100-A-1
TRANS. NUMBER (B-D)	76
LONGITUDE	L (B-D) 22526

EQUIPMENT No 24479

LONGI. No	24479
PROOF	24479
BRIDGE	24479
TRUNK	24479
POOF PK HOUSE	24479
BRIDGE PK	24479
NAV. BRIDGE	24479

EQUIPMENT

1 STOCKLESS BOW ANCHOR	5180
1 " " "	4790
1 " " "	4400
1 " " "	1944
1 " " "	812
270 FATHOMS 1/2" STUP LINK CABLE	
100 " 1/2" CIRC. STEEL WIRE STEAM LINE	
100 " 1/2" MANILA ROPE OR 1/2" STEEL WIRE TOW LINE	
2-30 " 7" HAWSEY'S (MANILA)	
2-30 " 6" " "	

APPROVED

DEC 31 1917

BETHLEHEM SHIPBUILDING CORPORATION, LTD.

"MOORE PLANT"

ELIZABETH, N. J.

"Kusama" N.Y.K. 17520

MIDSHIP SECTION

OIL TANKER

SCALE: 1/4" = 1'-0"

DATE: DEC 7-17

APPROVED

HULL No 117-3A



009376 004386-0002



© 2021

Lloyd's Register
Foundation