

**S.S. LUNA**  
**MIDSHIP SECTION**  
**S.S. N° 277**

LENGTH B.P. 315'0" BREADTH M<sup>LD</sup> 46'3 1/2"  
 DEPTH M<sup>LD</sup> 23'4 1/4"  
 SCALE 1/2" = ONE FOOT

CLASS 100/A1 STEEL AT LLOYD'S SINGLE DECK WITH DEEP FRAMING

NOTE: SCANTLING IS INTENDED TO BE THE MINIMUM

2 <sup>ND</sup> DECK NUMERALS		3 <sup>RD</sup> DECK NUMERALS	
1/2 GIRTH	43.54	1/2 GIRTH	43.54
1/2 BEAM	23.14	1/2 BEAM	23.14
DEPTH	24.31	DEPTH	24.31
	90.99 1 <sup>ST</sup> N°		90.99
	313.2		7
	28498 2 <sup>ND</sup> N°		83.99 1 <sup>ST</sup> N°
			313.2
			26305 2 <sup>ND</sup> N°

PROPORTIONS  
 B = 12.88  
 b = 6.76

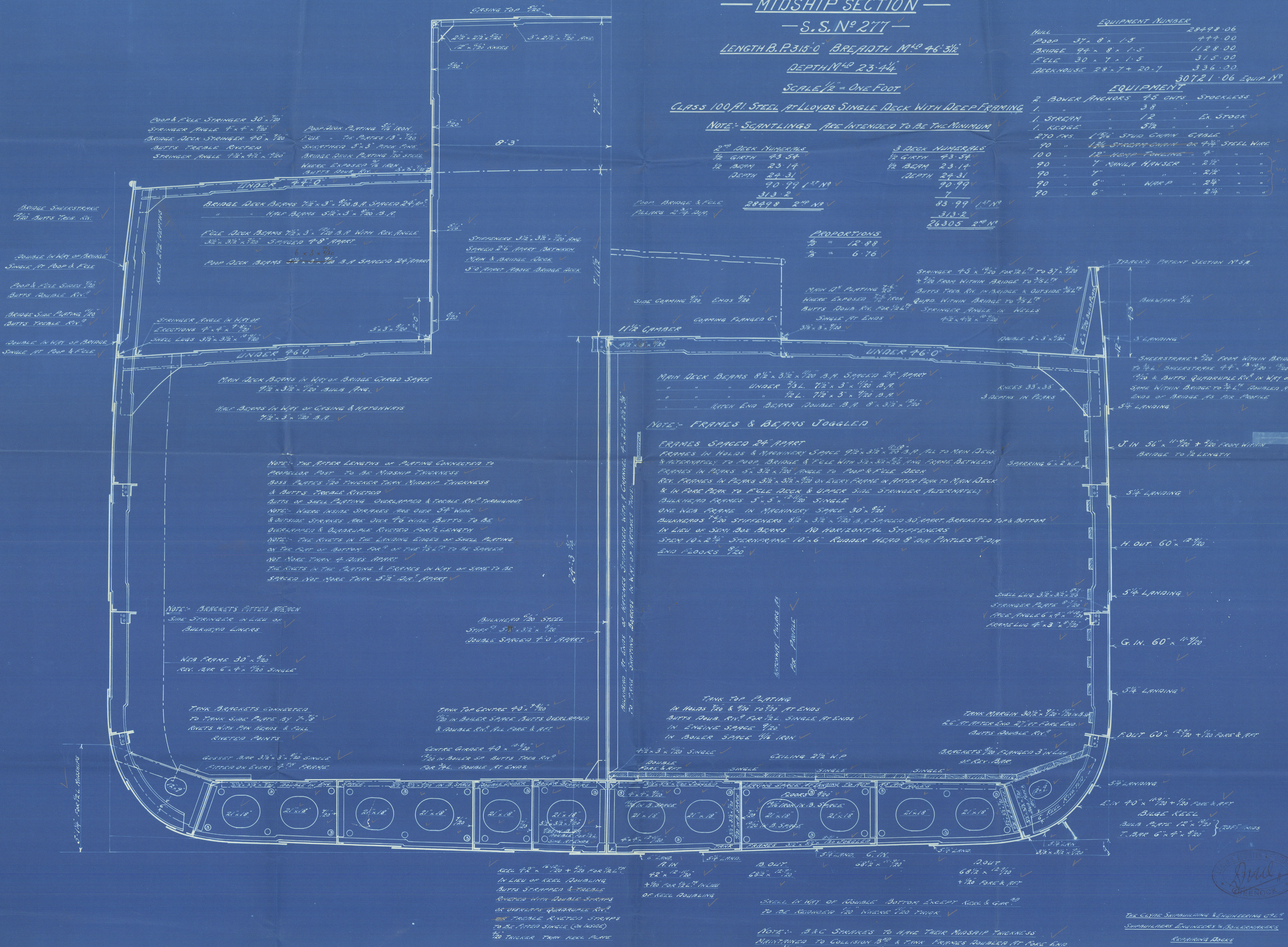
EQUIPMENT NUMBERS

	28498.06
HULL	28498.06
POOP	37.8 x 1.5
BRIDGE	94 x 8 x 1.5
FOLE	30 x 7 x 1.5
DECKHOUSE	28 x 7 x 20.7
	336.00
	30721.06 EQUIP N°

EQUIPMENT

	45 CWT	STOCKLESS
2. BOWER ANCHORS	38	
1. STRAIN	12	EX STOCK
1. KEDGE	5 1/2	
270 FMS	1 3/4	STUD CHAIN CABLE
90	1 3/4	STUD CHAIN OR 4 1/2" STEEL WIRE
100	12	HORN TOWLINE
90	7	MANILA HANSE
90	4	"
90	6	WARP
90	6	"

WITH OWNERS  
 CONSENT



THE CLYDE SHIPBUILDING & ENGINEERING CO. LTD.  
 SHIPBUILDERS, ENGINEERS & BOILERMAKERS  
 ROBINSON ROAD  
 PORT GLENSIDE

TRADING N° 1000  
 DATE 10/10/1914





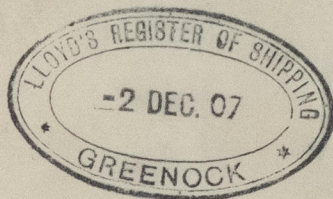
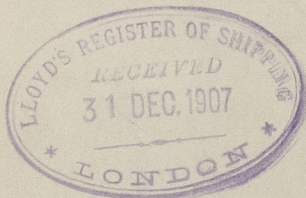
Clyde I. B. & Eng. Co. Ltd.

Partnership Liction

S. S. No 277.

S. S. "LUNA"

Report No 15290



Duplicate of S. S. "ONDA"  
Report No 15177.



© 2021

Lloyd's Register  
Foundation

1010-57300-203600