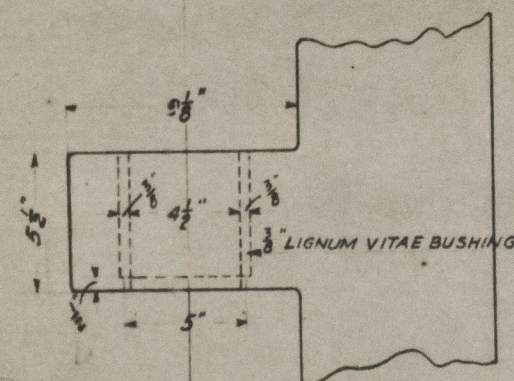
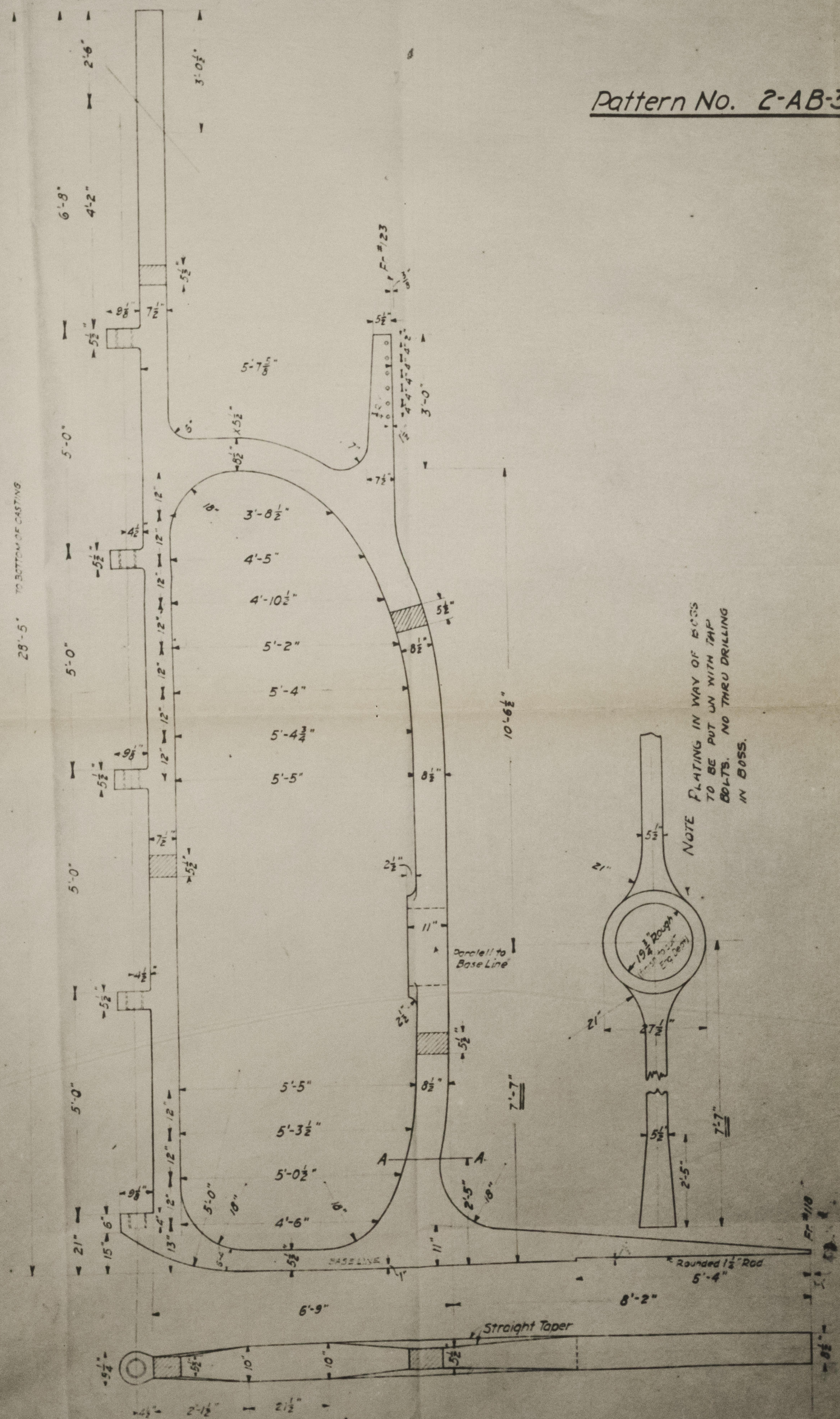
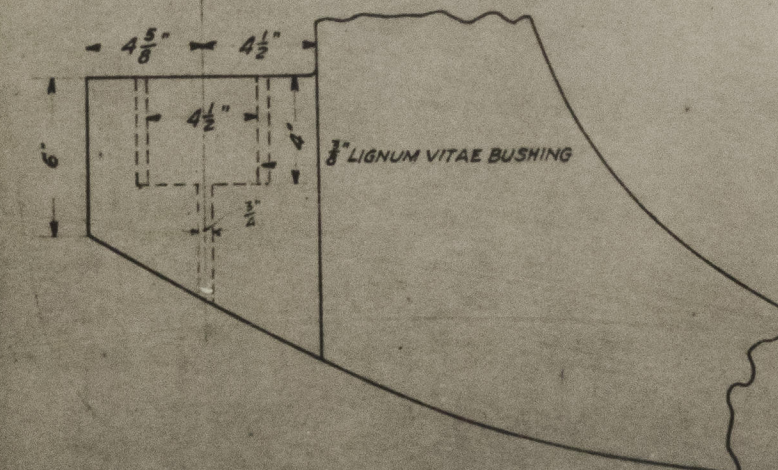
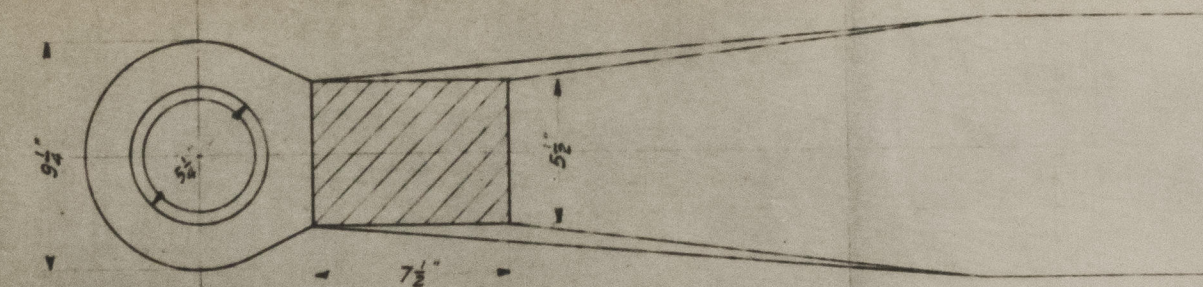
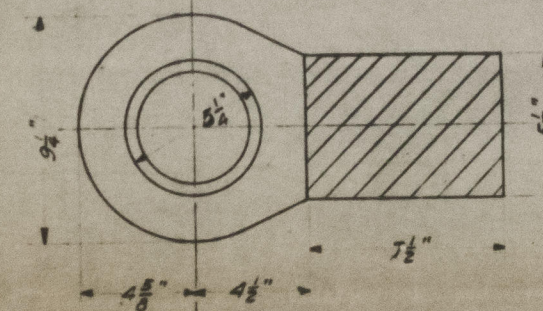


Pattern No. 2-AB-3



GUDGEONS
3"=1'



HEEL GUDGEON
3"=1 FT.

NOTES:
GUDGEONS TO BE BORED IN
LATHE TO ASSURE A TRUE LINE
NO HOLE TO BE DRILLED IN
SCARPH OR AROUND BOSS BEFORE
PLATING IS FITTED
MATERIAL: CAST STEEL TO PASS
LLOYD'S & AM. BUREAU OF SHIPPING
REQUIREMENTS

APPROVED
JUL 27 1927
LLOYD'S REGISTER OF SHIPPING
Approved

REVISIONS
DESCRIPTION
ADDITION OF HOLE COVERING
PLATING IN WAY OF BOSS
113010

STERN POST	
McDOUGALL-DULUTH COMPANY SHIPBUILDERS & ENGINEERS DULUTH, MINN., U. S. A.	
SCALE 2-3"=1 FT.	CHARGE NO. 5
DRAWN BY RCT	DATE 25.10.27
TRACED BY	DRAWING NO. 3131

S. Chamber

LLOYDS REGISTER
OF SHIPPING, NEWPORT NEWS, VA.
RECEIVED 25.7.1927
ANSWERED _____

Sturfrance



© 2021

Lloyd's Register
Foundation

009362-009375-0037