

SHIPS Nos 8 & 9. PLAN No 5.

STERN POSTS OF FORGED STEEL. SCALES AS SHOWN.

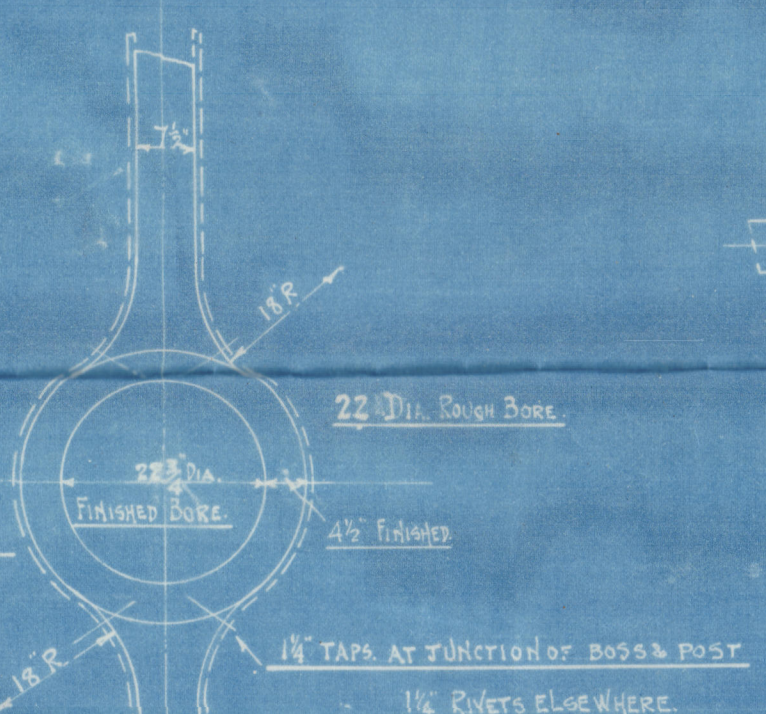
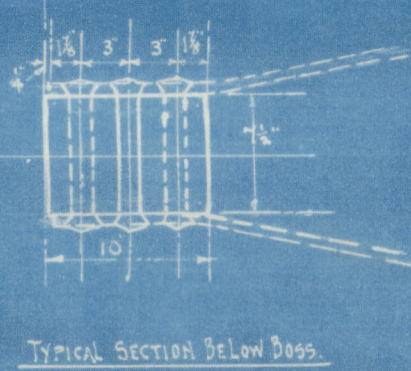
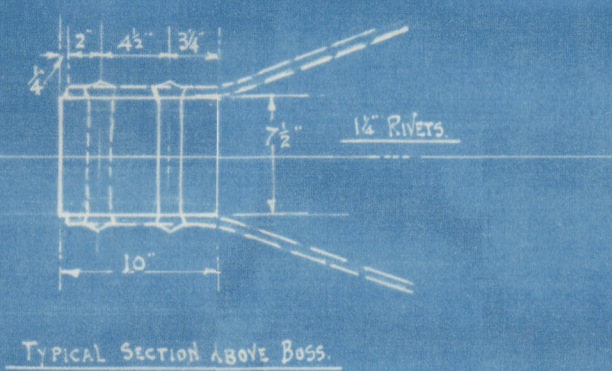
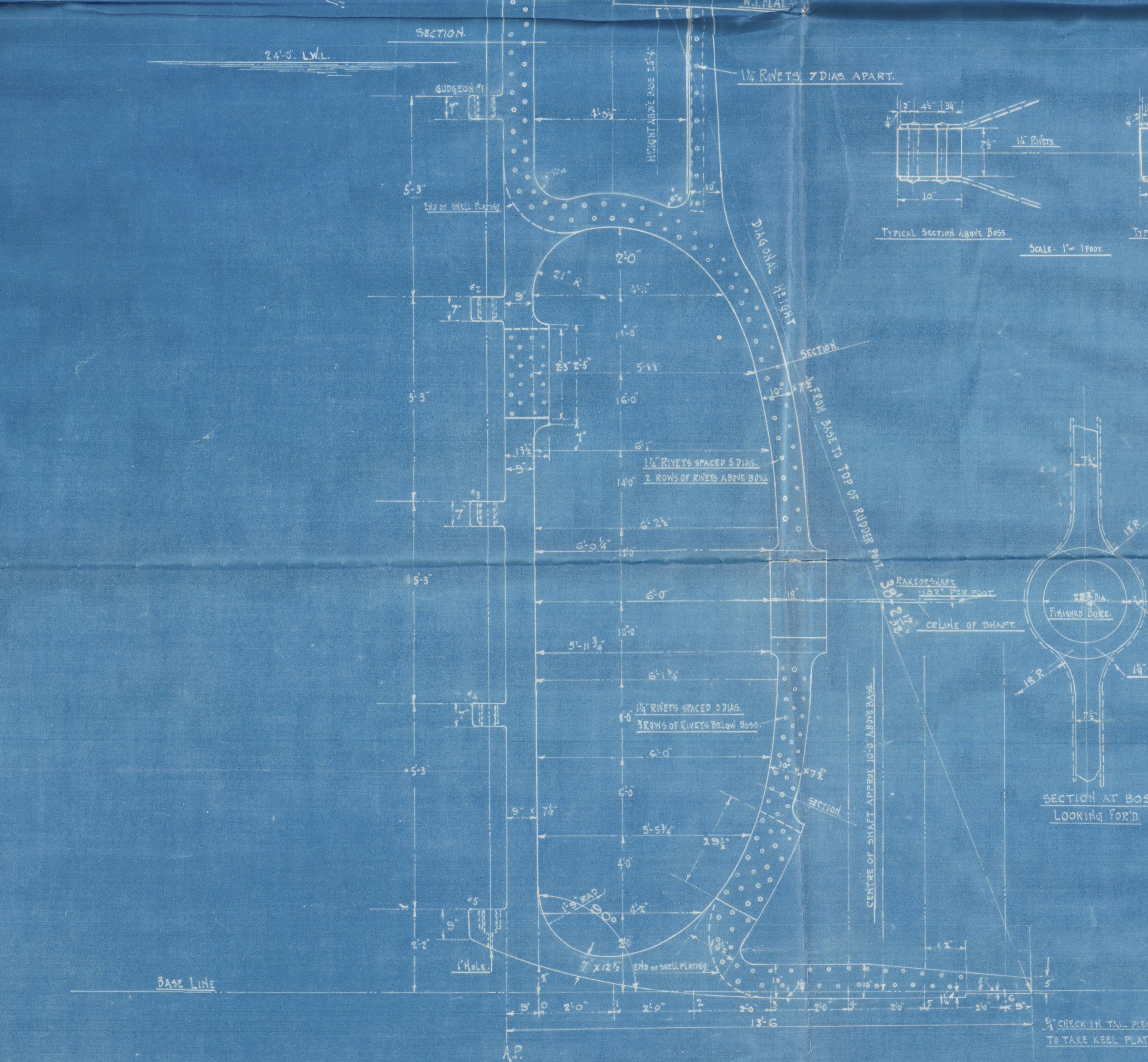
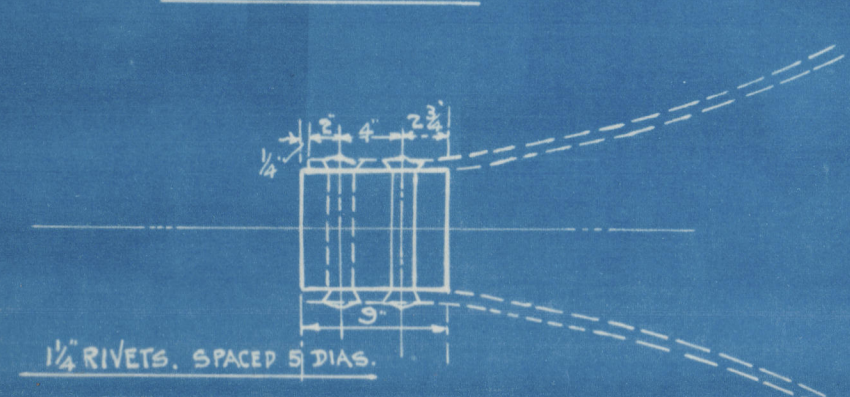
ONE SET, COMPLETE AS DRAWN, FOR SHIP No 8.

NOTES.

- FORGED TO BE MADE IN TWO PIECES WITH SCRAMLED JOINT, & TESTED TO LLOYD'S REQUIREMENTS.
- FORGED TO BE DRILLED, TAPPED, MACHINED AND OTHERWISE FINISHED, READY FOR ERECTION, ALL AS DETAILLED ON PLAN.
- SHIPBUILDER'S REPRESENTATIVE WILL LINE OFF FORGING FOR DRILLING & MACHINING WORK.
- RUDDER GUSSONING TO BE IN TRUE ALIGNMENT & BUSHED WITH LIGHT ALUMINUM. BUSHES SUPPLIED & FITTED BY SHIPBUILDER.
- FORGING TO BE CLEAN, SOUND & FREE FROM TWIST & OTHER DEFECTS.

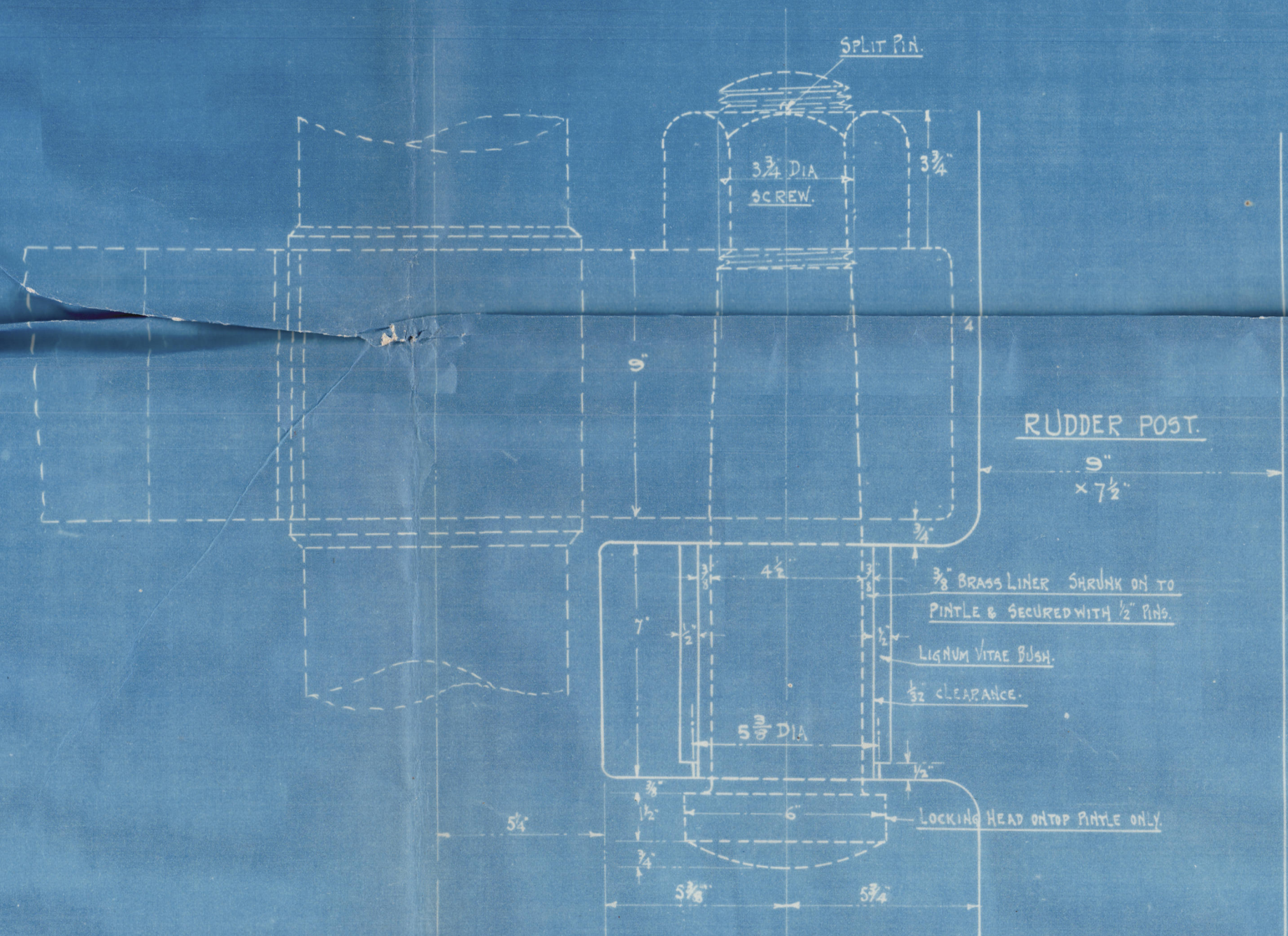
CALCULATED WEIGHT OF EACH FORGING - 6 1/2 LONG TONS.

SECTION OF POST ABOVE APERTURE.
Scale 1" = 1 foot.

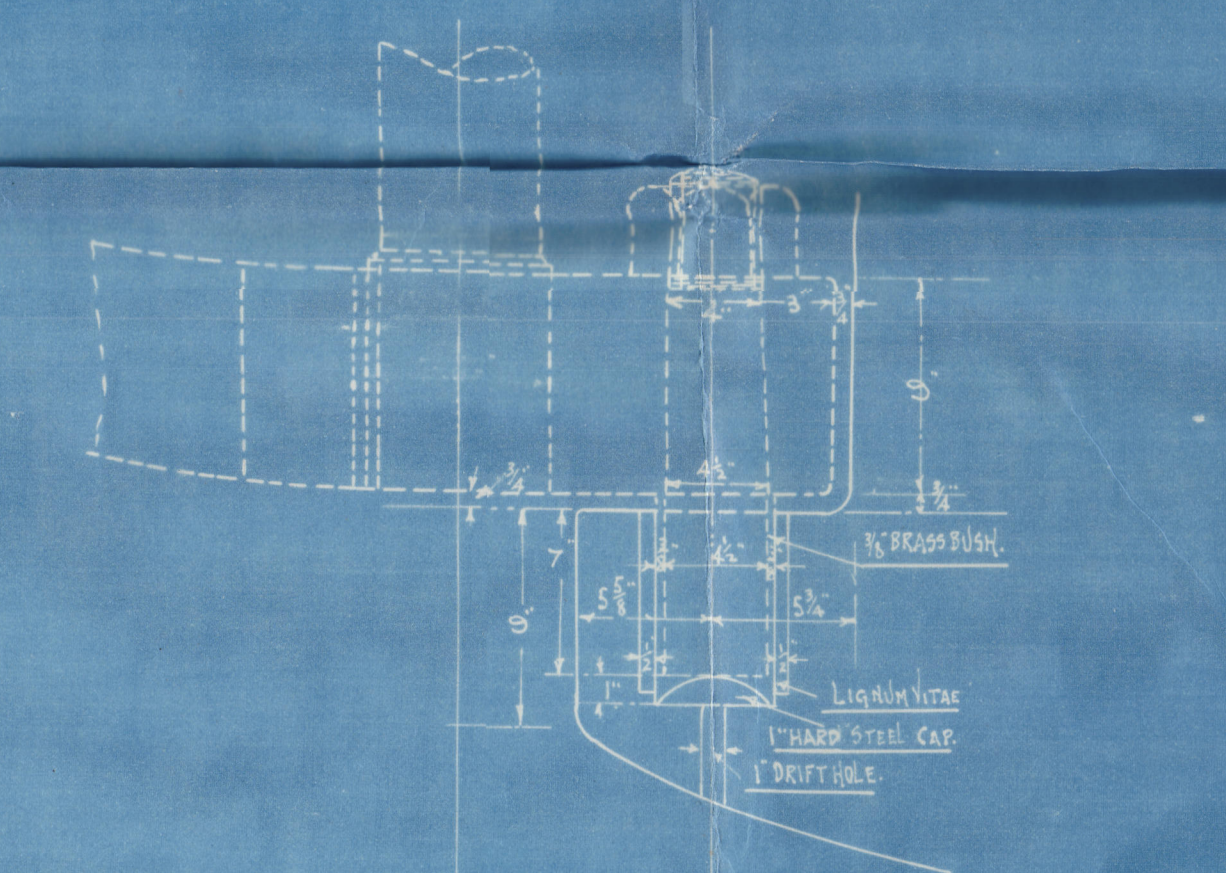


DETAIL SHOWING EXTRA COUNTERSINKING
OF RIVET HEADS INSIDE BOSS TO ALLOW
FOR MACHINING.
Scale 5" = 1 foot.

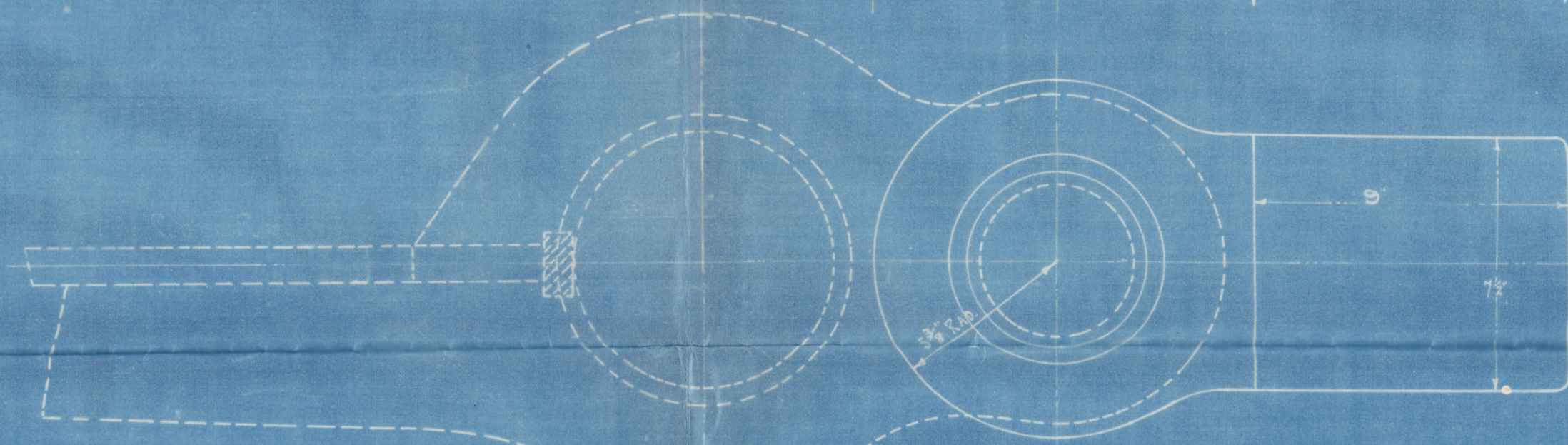
DETAIL OF PINTLES & GUSSONING No 1, 2, 3, & 4.
Scale 3" = One foot.



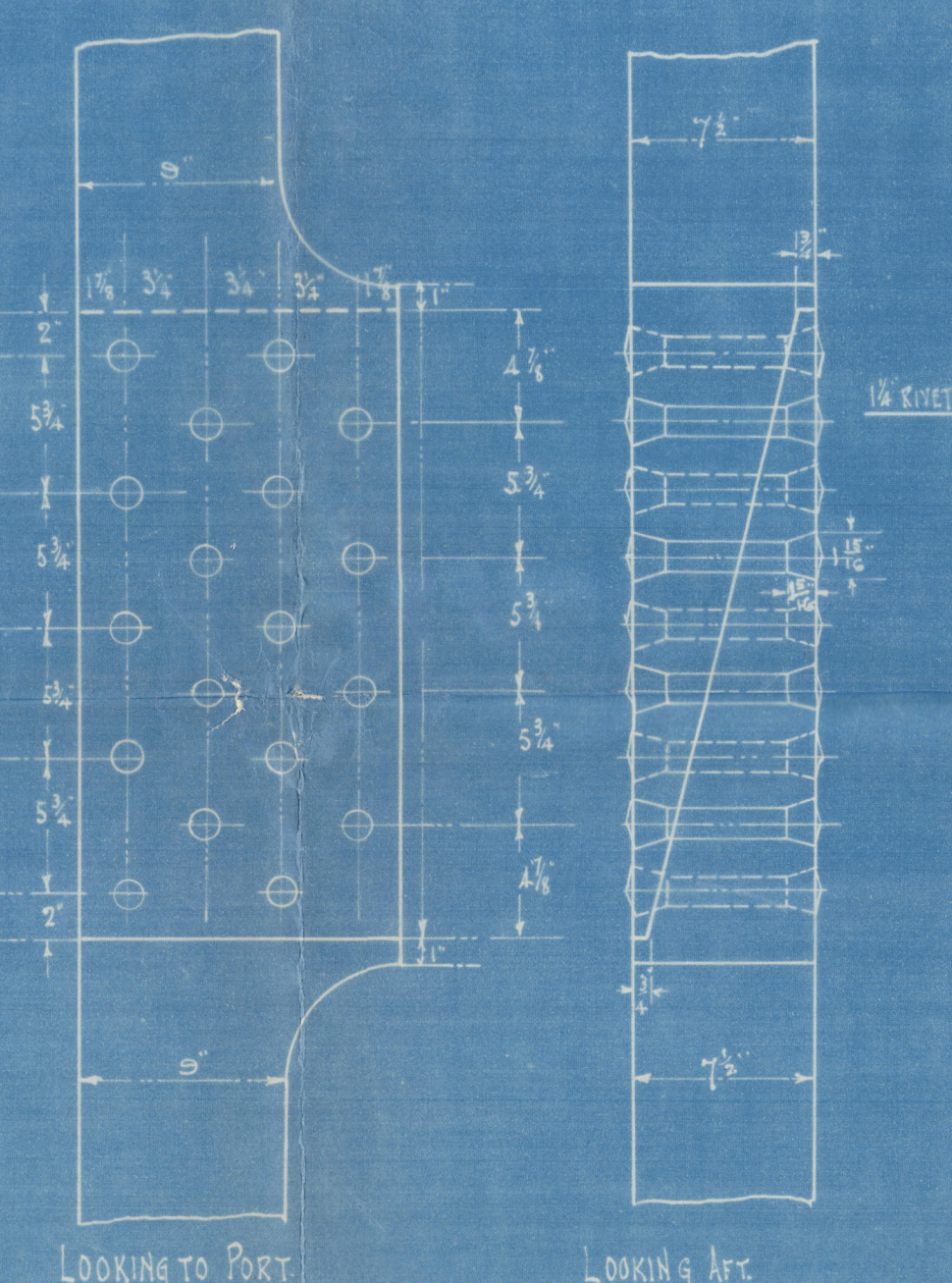
DETAIL OF BOTTOM GUSSONING.
Scale 1 1/2" = One foot.



PLAN AT TOP OF GUSSONING.



DETAIL OF SHARP ON STEERPOST.
Scale 1 1/2" = One foot.

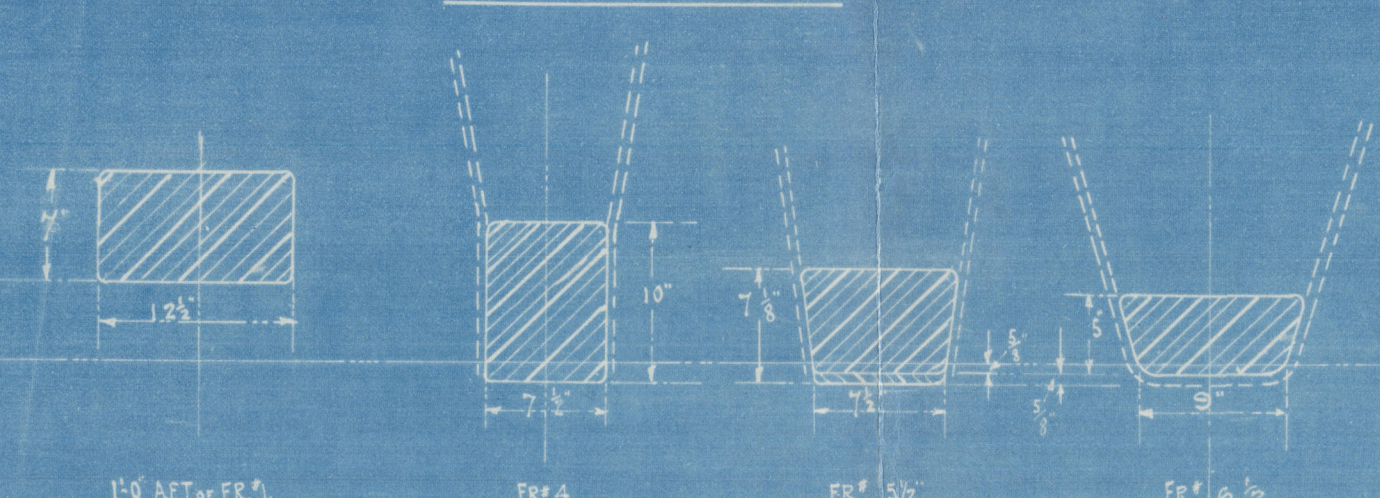


DETAIL OF SHARP ON STEERPOST.
Scale 1 1/2" = One foot.



SECTION LOOKING AFT, SIMILAR TO THAT
AT RUDDER POST.
BUT RIVET SPACING NOT TO BE COUNTERSINKING.

PLAN AT BOTTOM.



ALL SECTIONS LOOKING AFT.
Scale 1" = One foot.

Approved
1916
LLOYD'S REGISTER OF SHIPS
OCT 18 1916
LONDON

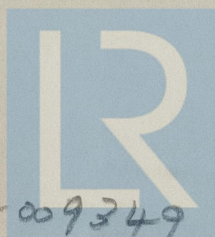
Montreal

Stem Post
S/F



S "Torsanger"

mtl 1522



© 2021

Lloyd's Register
Foundation

009341-009349-0323

009341-009349-0323

S

Stem Post
S/F

W. m. m. m.



of "Forsanger"

Antl 1522.

009341-009349-0323



© 2021

Lloyd's Register
Foundation