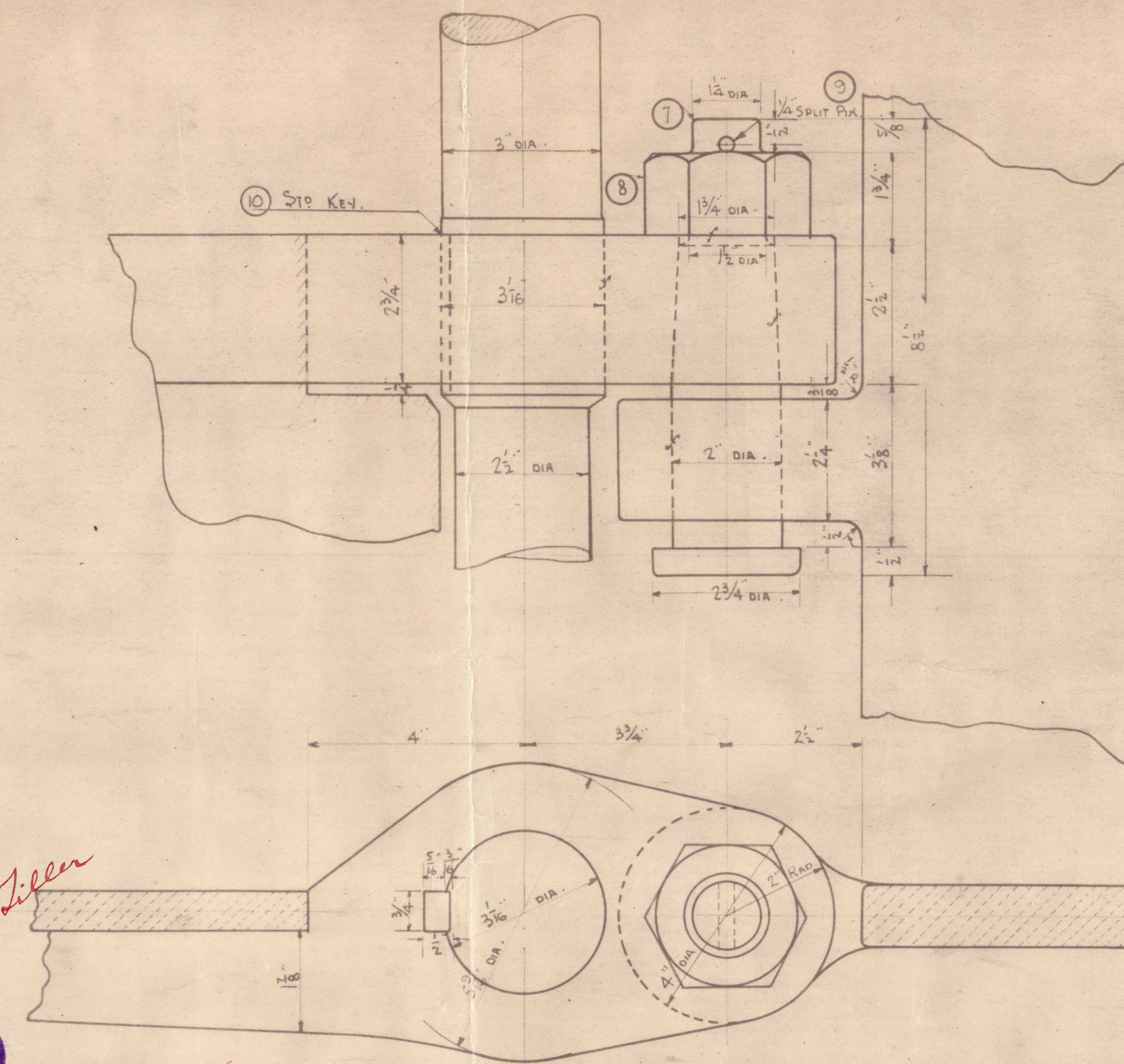
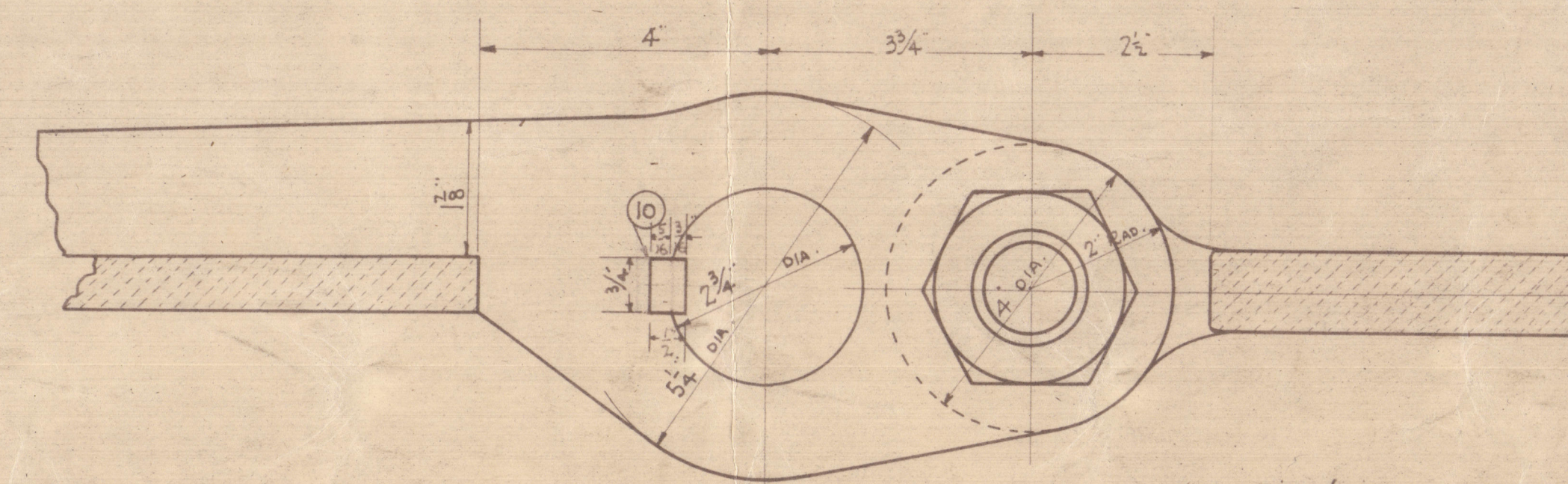
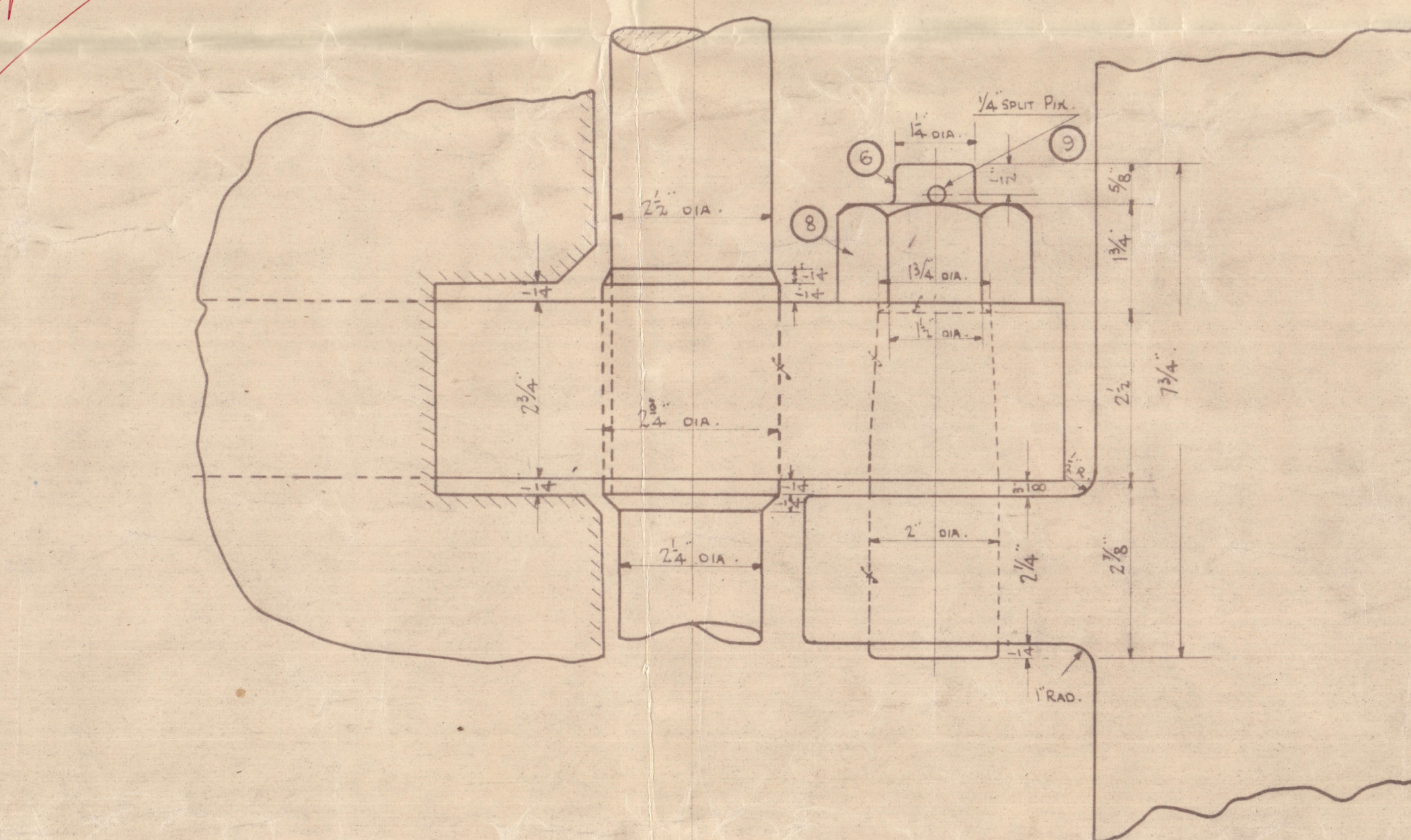


DETAIL OF RUDDER HEAD.

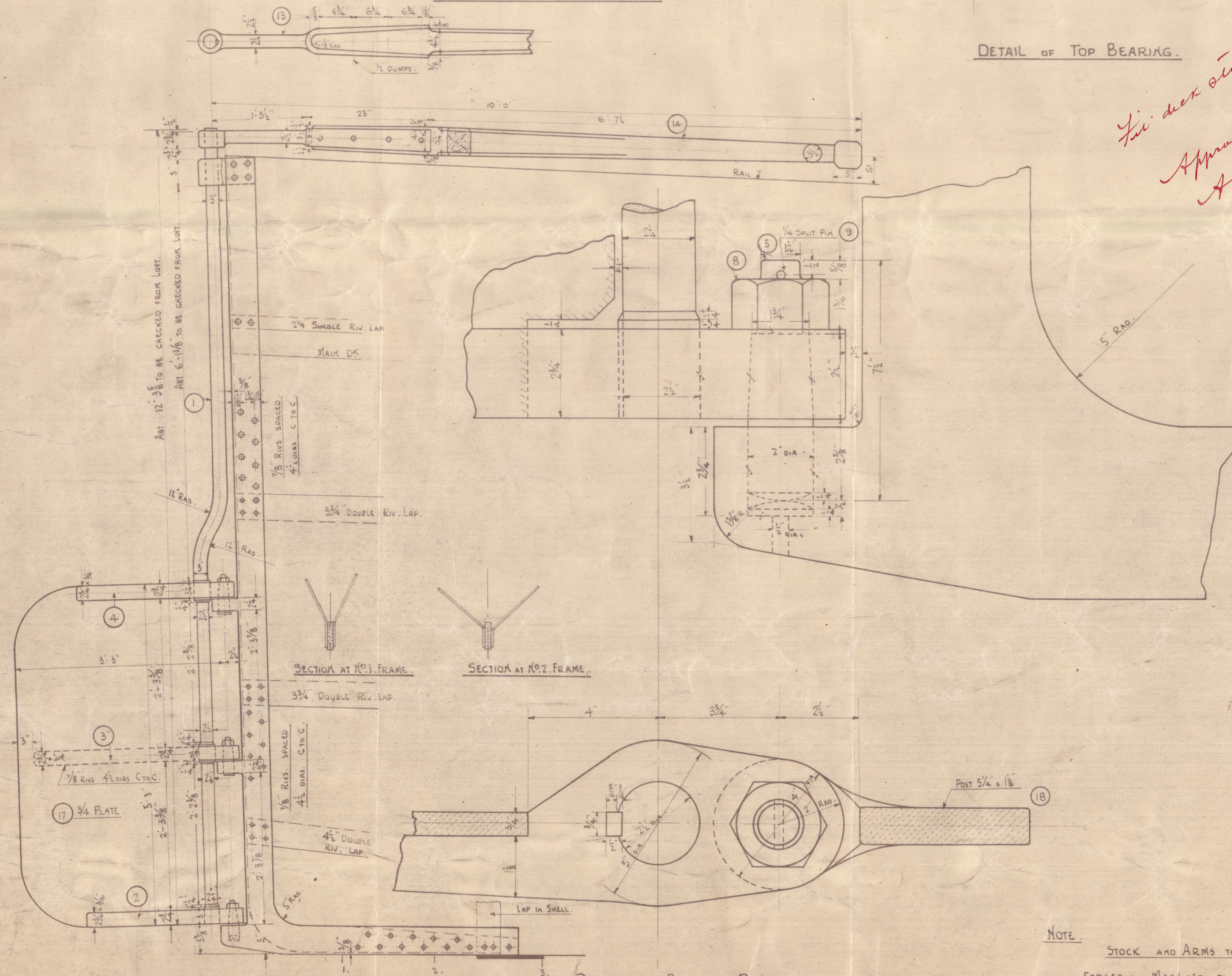
DETAIL OF TOP BEARING.



DETAIL OF TOP PISTLE



DETAIL OF CENTRE PINTLE.



DETAIL OF BOTTOM PINTLE

NOTE.

STOCK AND ARMS TO BE OF M.S.

FORGED AND MACHINED TO SHAPE AS SHOWN.

ARMS TO BE SHRUNK ON AND KEVED TO STOCK

JOB NO. S.66 OR S.67

COST NO

STERN POST	—	6.
RUDDER FRAME	—	7.
RUDDER PLATE	—	9
RIVETING	—	12

18	1	STERN FRAME.	AS DETAILED	M.S.	1	2'-6" x 8" M.S. GUSSET	STOCK
17	1	RUDDER PLATE.	5'-5" x 33" x 3/4"	M.S.	1	22'-0" x 36" x 3/4"	STOCK
16	4	DUMPS TO TILLER.	1/4" DIA 5' LONG.	M.S.	1	20" x 1/4" DIA BAR	STOCK
15	1	KEY TO TILLER.	BRITISH STANDARD.	M.S.	1	BRITISH STANDARD.	SHOP.
14	1	TILLER.	AS DETAILED	H.WOOD	1	AS DETAILED.	SHOP.
13	1	TILLER STOCK.	AS DETAILED	M.S.	1	AS DETAILED.	SHOP.
12	4	BOATS FOR TOP PLANKING	4 1/4" x 7/8" HEX 10"	M.S.	4	4 1/4" x 7/8" HEX. <sup>BOATS W PLATE</sup>	SHOP.
11	1	TOP BEARING.	AS DETAILED.	M.S.	1	AS DETAILED.	SHOP.
10	3	KEYS TO ARMS.	BRITISH STANDARD.	M.S.	3	BRITISH STANDARD	SHOP.
9	3	SPLIT PINS.	1/4" DIA 2 1/4" LONG.	WS.	3	1/4" DIA 2 1/4" LONG. <sup>SPRINT</sup>	STOCK
8	3	NUTS FOR AXLES.	1 1/2" HEX. AUT.	M.S.	3	2 1/2" x 1 1/2" HEX. NUTS TO STOCK	STOCK
7	1	TOP PIVOT.	2" DIA x 8 1/2" LONG	M.S.	1	9" x 3/4" DIA ROUND BAR	STOCK
6	1	CENTRE PIVOT.	2" x 1 3/4" LONG	M.S.	1	16" x 2" DIA BAR	STOCK
5	1	BOTTOM PIVOT.	2" x 7 1/2" LONG	M.S.	1	ROUND	STOCK
4	1	TOP ARM.	AS DETAILED.	M.S.	1	AS DETAILED.	SHOP.
3	1	CENTRE ARM.	AS DETAILED.	M.S.	1	AS DETAILED.	SHOP.
2	1	BOTTOM ARM	AS DETAILED.	M.S.	1	AS DETAILED.	SHOP.
1	1	RUDDER STOCK.	AS DETAILED.	M.S.	1	13'-0" x 3" DIA BAR	STOCK

MARK 100% SPARE PURPOSE. \* PARTICULARS OR MATERIAL QUANTITIES DIMENSIONS. INFORMATION FOR ORDERING MATERIAL.

MATERIAL TO BE ORDERED FOR	QUANTITIES GIVEN ARE FOR ONE SHIP.
----------------------------	------------------------------------

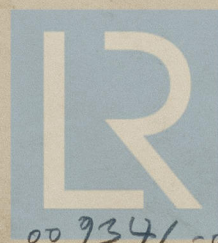
[illegible]



6900-678600-175600

Sydney  
(Barge No. 66)

Stamford & Hunter Post



© 2021

Lloyd's Register  
Foundation

00 9341 - 00 9349 - 0069