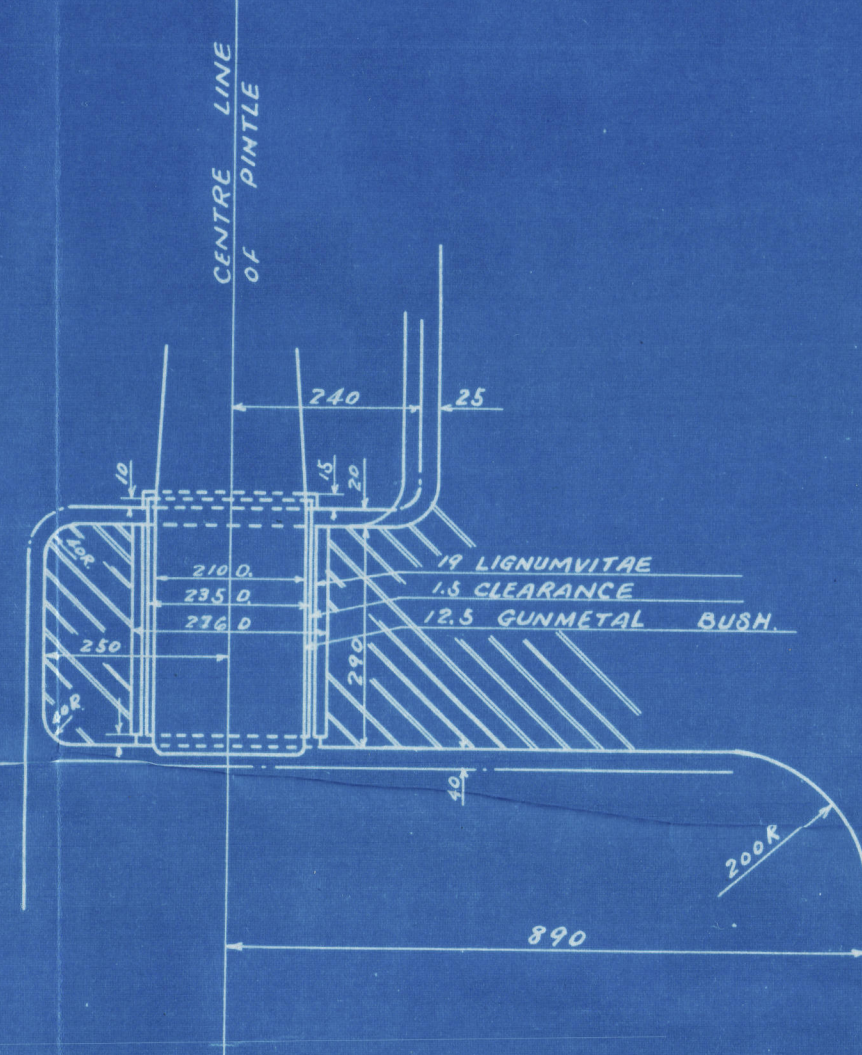


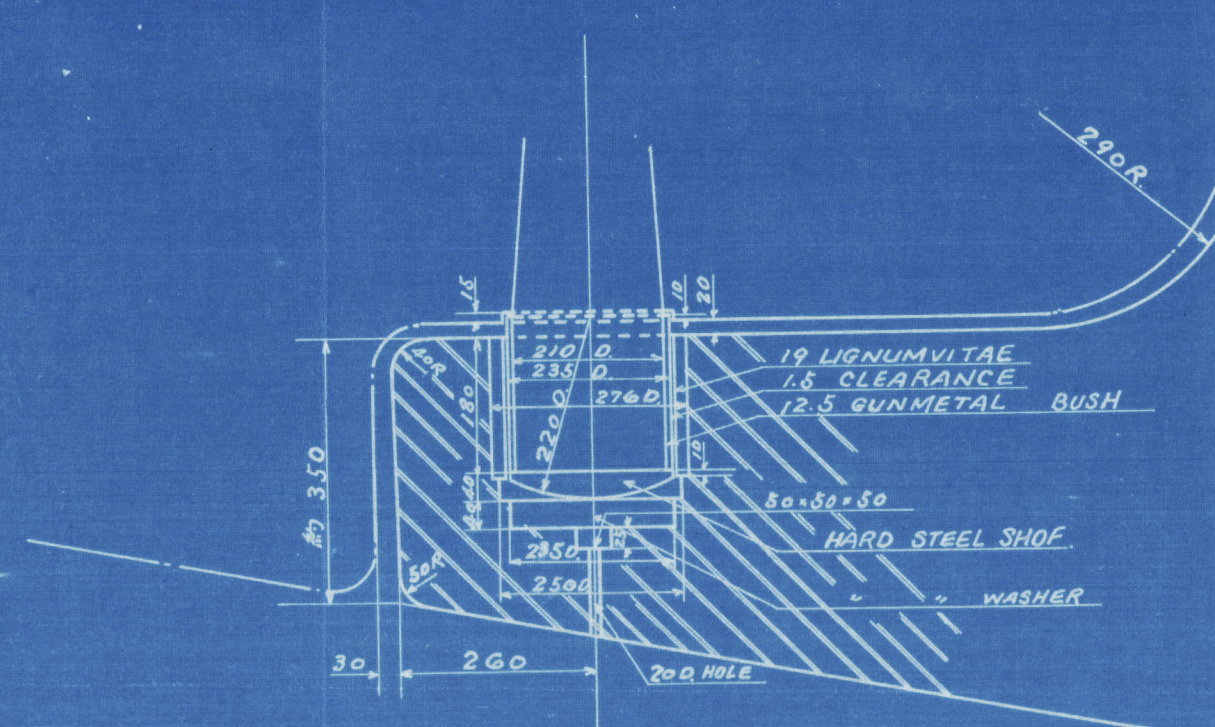
MATERIAL :  
 STERN FRAME CAST STEEL  
 CENTRE PIECE

WEIGHT :  
 STERN FRAME 24.800  
 CENTRE PIECE 3.65  
 M.S. COVER PLATES 1.403  
 TOTAL WEIGHTS 26.568 K.TONS

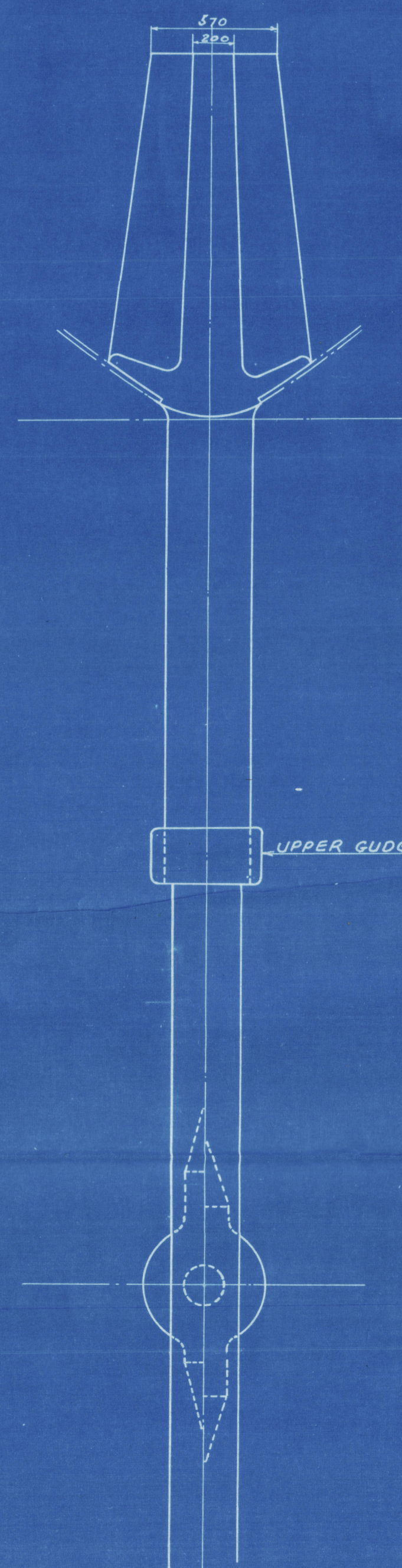
DETAIL OF UPPER GUDEON  
 SCALE 1/10



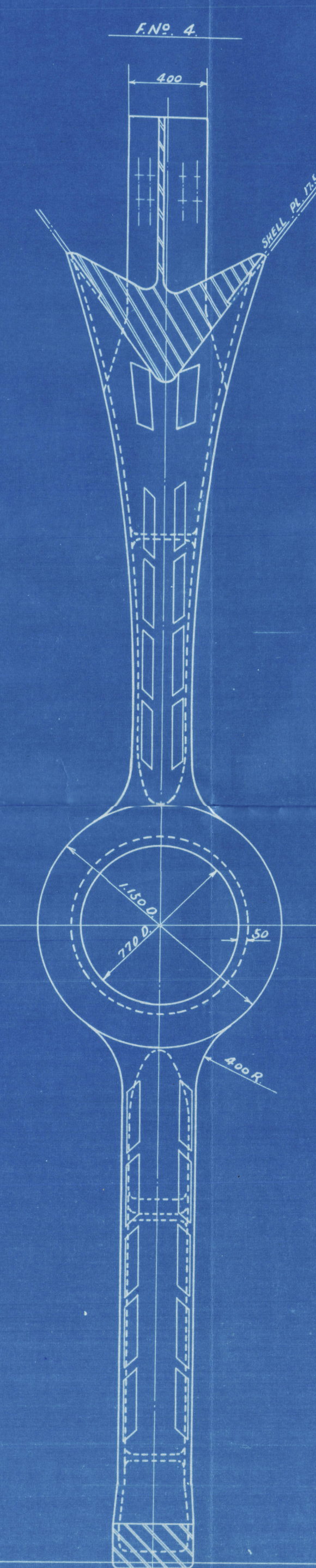
DETAIL OF BOTTOM GUDEON  
 SCALE 1/10



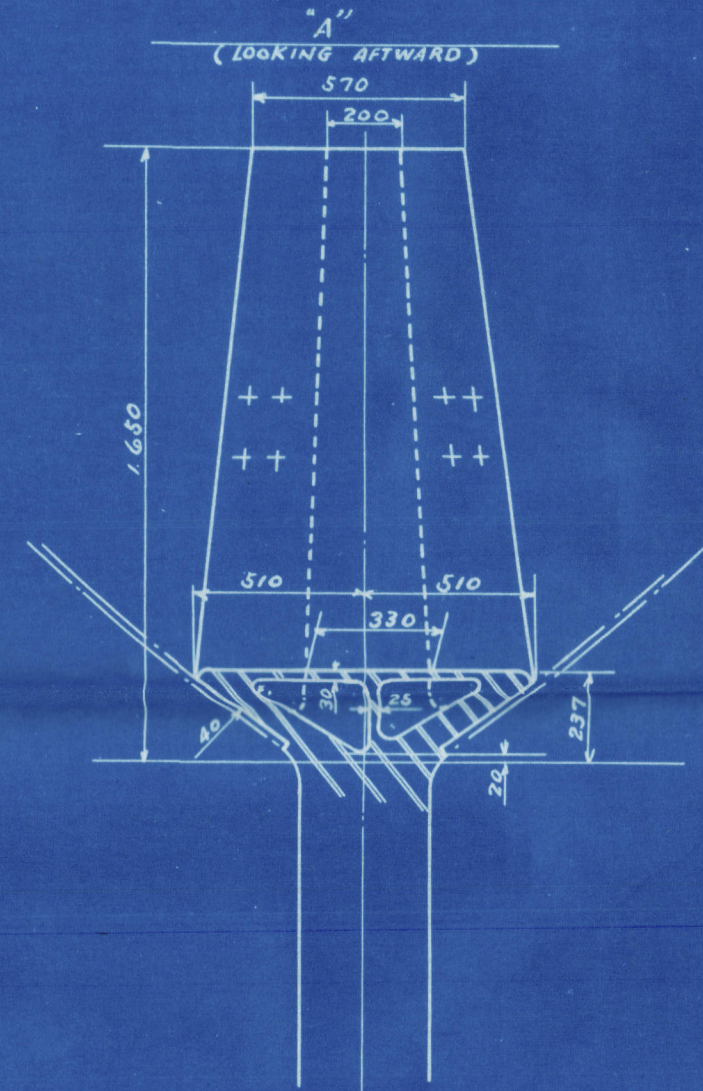
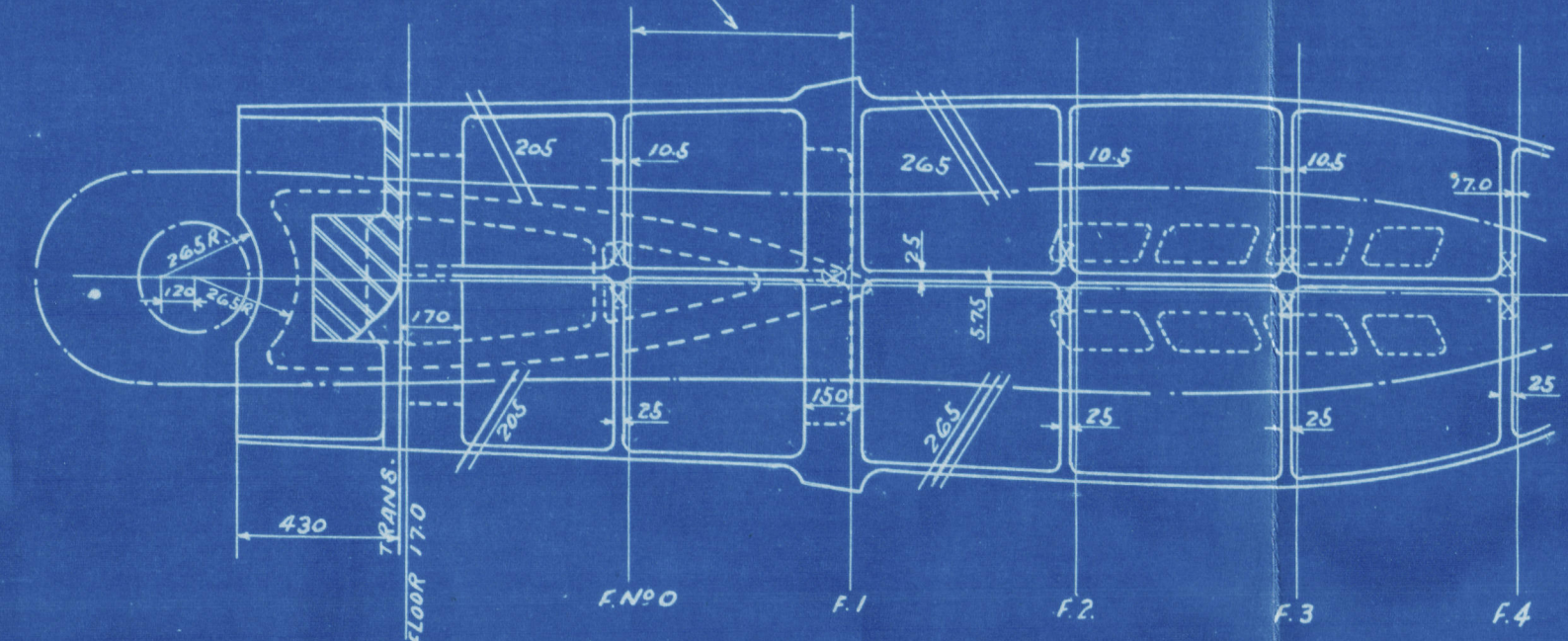
RUDDER POST  
 LOOKING FORWARD



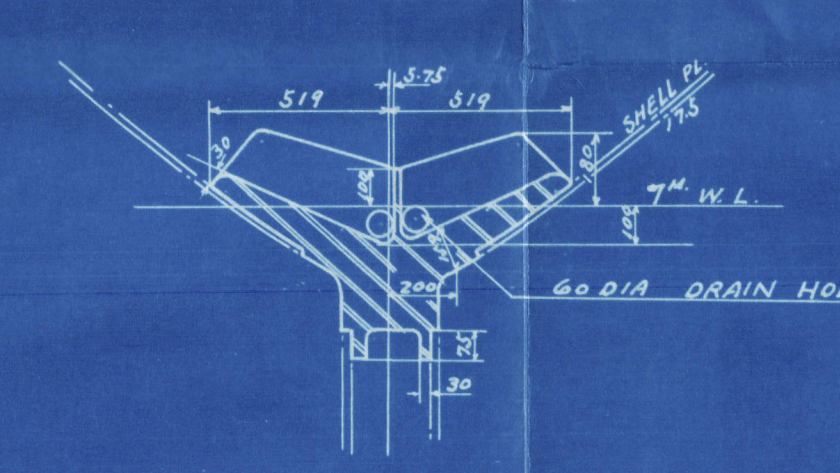
PROPELLER POST  
 LOOKING FORWARD



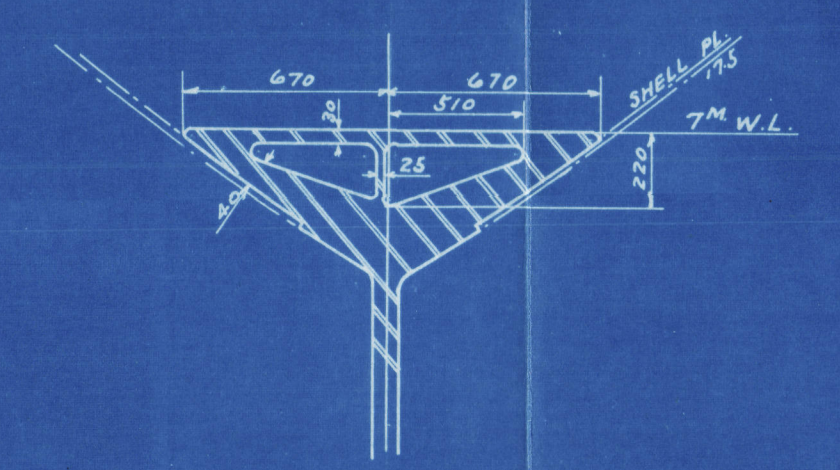
TOP PLAN  
 HULL - 1 SHELL PLATE  
 200X23.3mm. 1/2



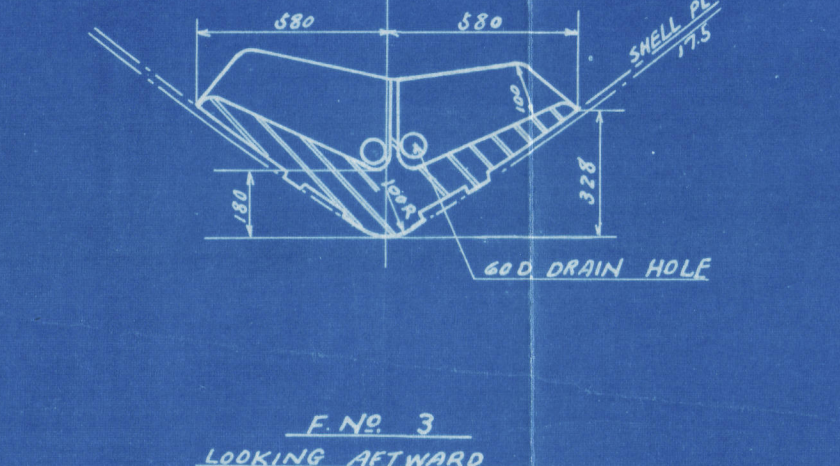
END 0  
 (LOOKING AFTWARD)



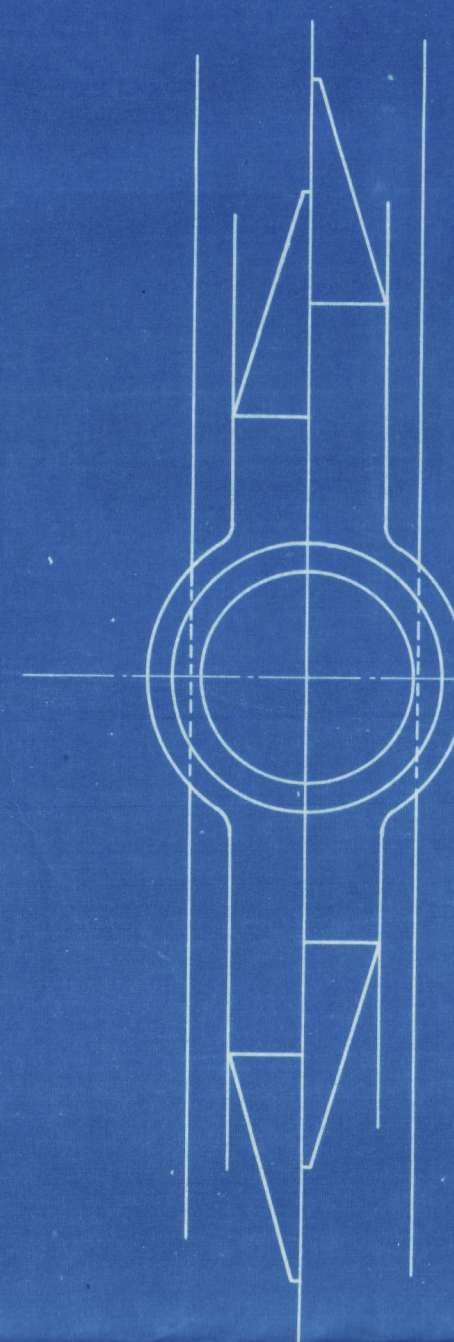
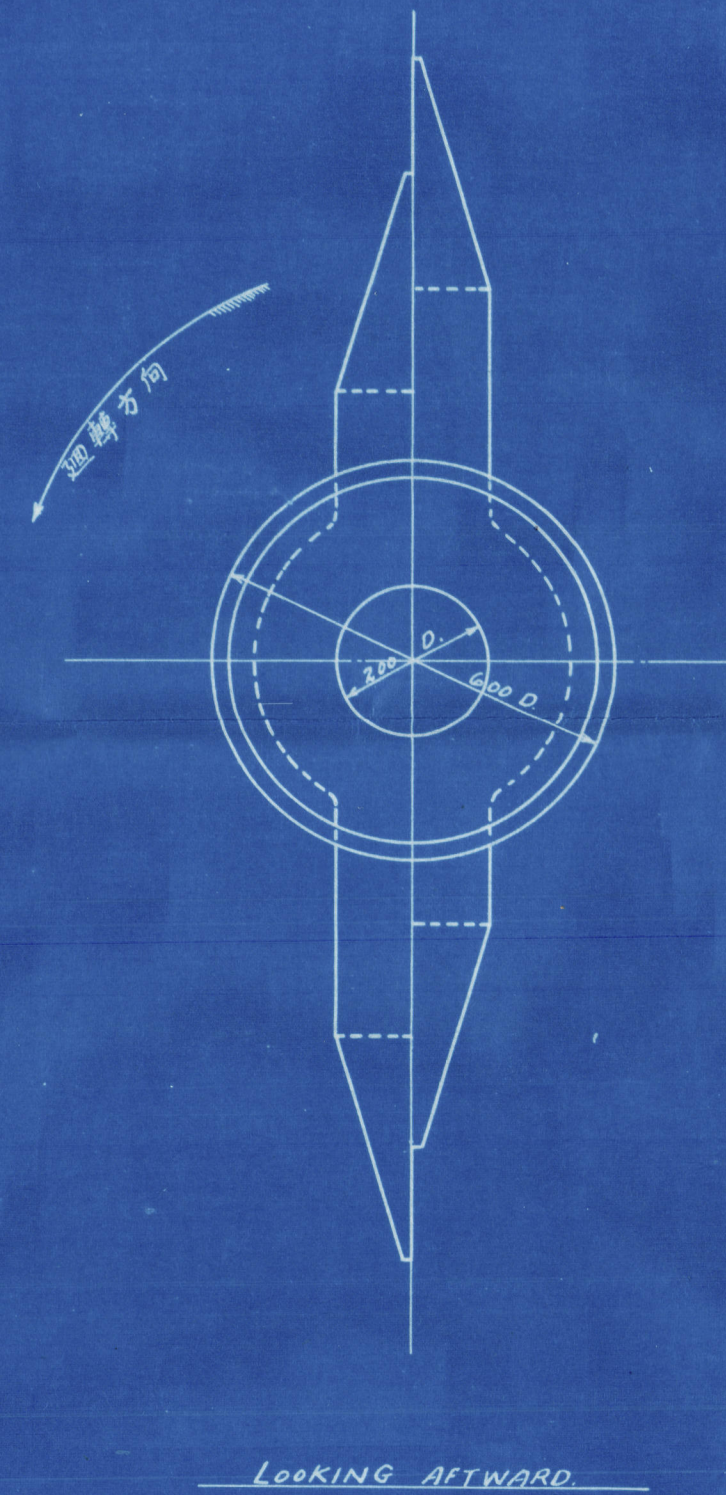
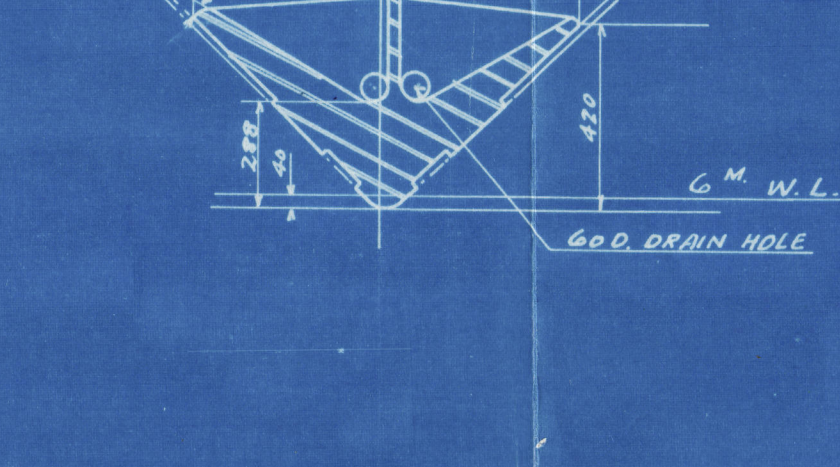
END 1  
 (LOOKING FORWARD)



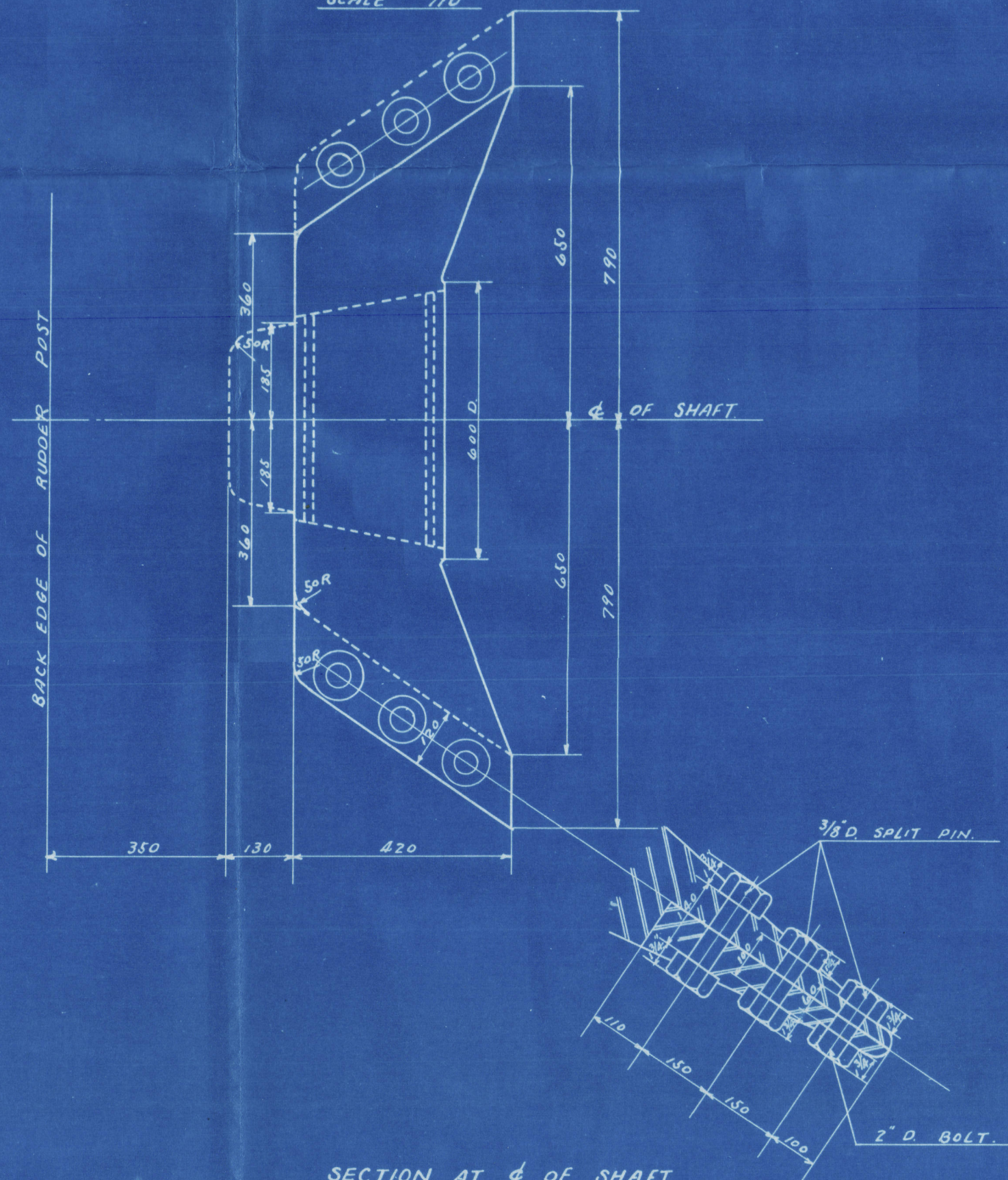
END 2  
 (LOOKING AFTWARD)



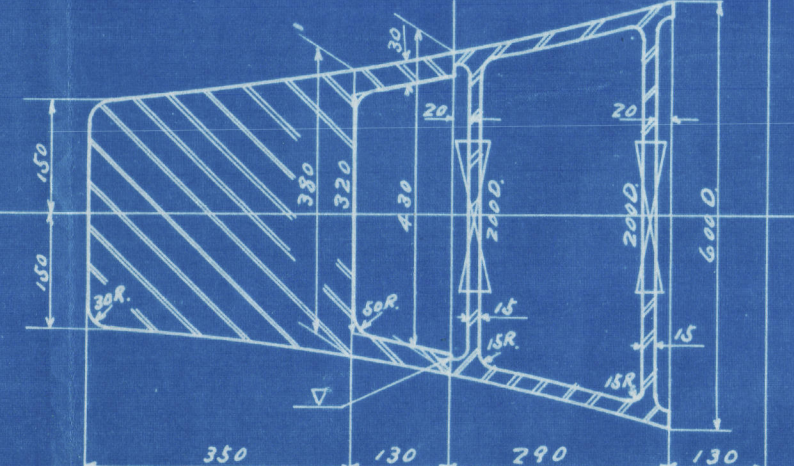
END 3  
 (LOOKING AFTWARD)



DETAIL OF RUDDER POST  
 (AT PROPELLER SHAFT LINE)  
 SCALE 1/20

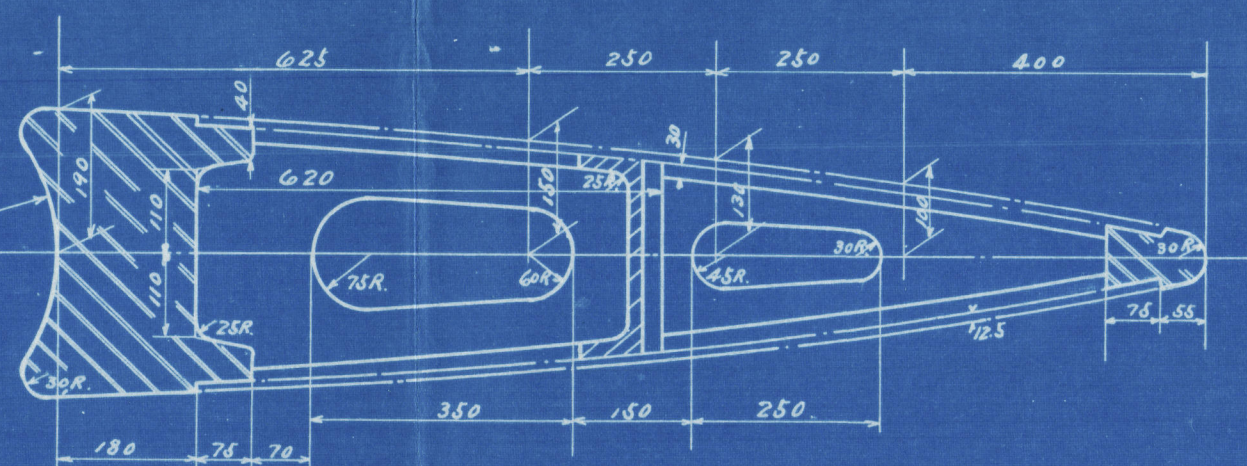


SECTION AT 4' OF SHAFT



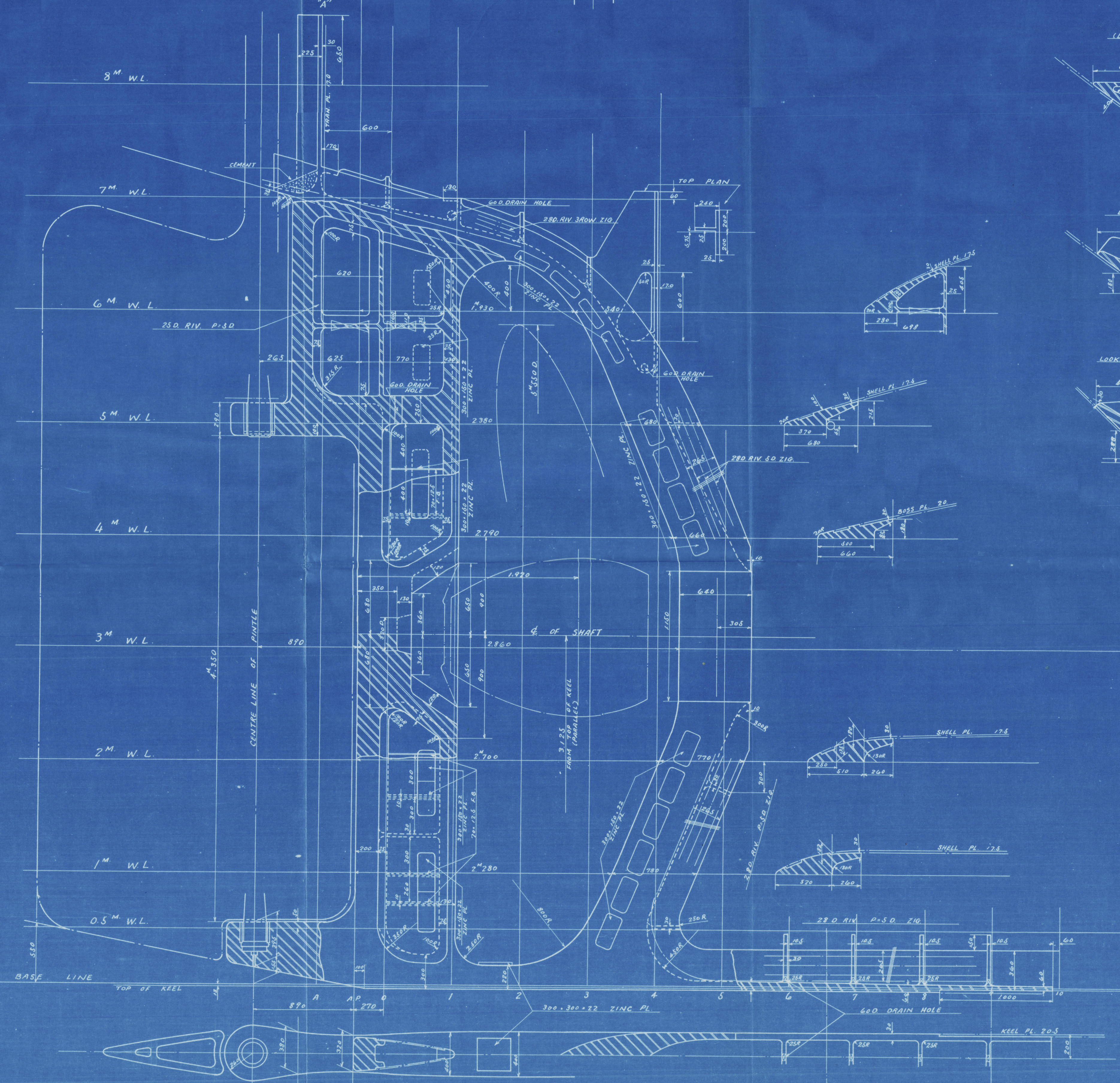
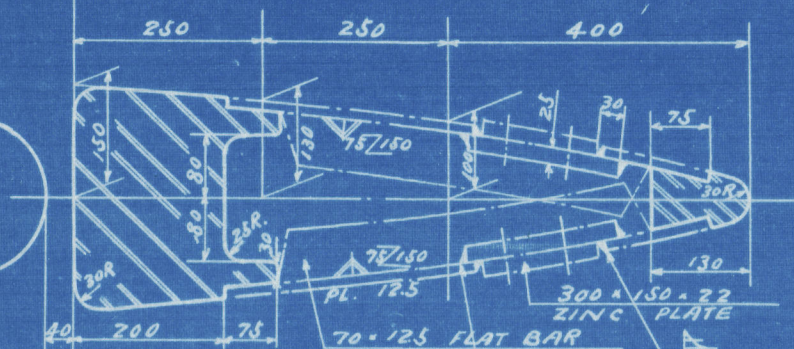
SECTION AT 6' W.L.

SCALE 1/10



SECTION AT 1' W.L.

SCALE 1/10



Nagasaki Report No. 2386.

S. No. 700.  
 M. S. "AZUMA MARU".  
 STERN FRAME.

SCALE 1/20  
 DETAIL SCALE 1/10  
 140" x 19" x 12 3/4"  
 (FINISHED PLAN)

三井物産株式会社  
 長崎造船所  
 造船設計部 船体課  
 送り先  
 課長 佐々木 啓  
 技師 佐々木 啓  
 出図者 佐々木 啓  
 出図日 昭和 14 年 12 月 10 日  
 1007.5.1-007.5.6-007.5.3



6  
Nagasaki Report No. 2336.

S. No. 700.  
M. S. "AZUMA MARU."  
STERN FRAME.

SCALE  $\frac{1}{20}$   
DETAIL SCALE  $\frac{1}{10}$   
140 M. x 19 M. x 12.3 M.  
(FINISHED PLAN.)

三菱重工業株式會社			
長崎造船所			
造船設計部 商船課			
送り先			
課長	檢圖	河田	製圖
出圖番號			
出圖日附			

009301-009310-0073



009301-009310-0073

Lloyd's Register  
Foundation