

NO.54.
S. S. SHIMA MARU.
STEM, STERN FRAME & RUDDER.
SCALE $\frac{1}{2}$ " TO ONE FOOT.

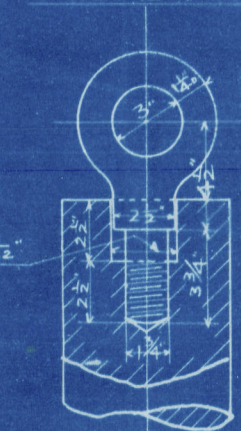
SCANTLING NUMBER.

SPEED 10 KNOTS.
A (TOTAL AREA) 84.5 sq
D 26 FT
A x D 219.7

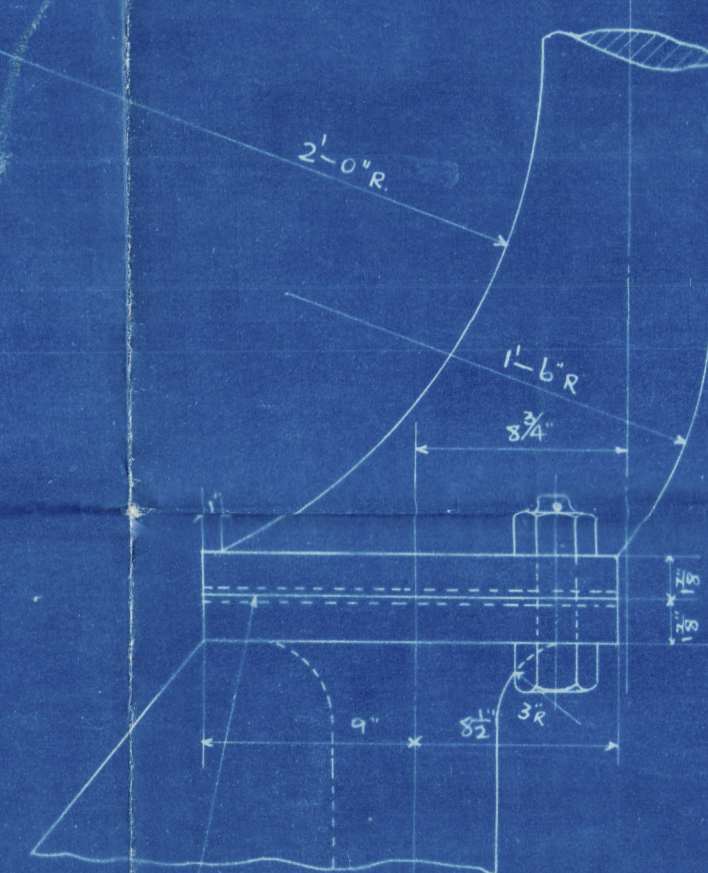
MATERIALS.

STERN FRAME	CAST STEEL
RUDDER FRAME	"
RUDDER STOCK	"
PINTLES	FORGED
EYE BOLT	"

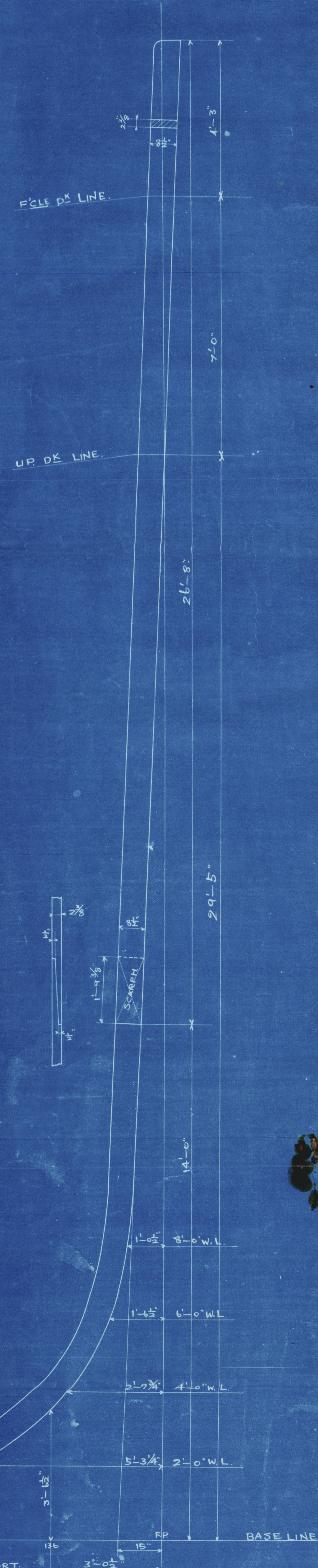
EYE BOLT
SCALE $\frac{1}{2}$ "=1'-0"



DETAIL OF COUPLING.
SCALE $\frac{1}{2}$ "=1'



STEM.
SCALE $\frac{1}{2}$ "=1'
ROLLED STEEL



進信省及ヒコイ、試験証明書ヲ要ス

T. S.S. Form No. 39.

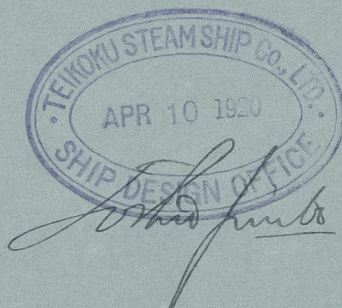
TOBA YARD No. 54

Ship's Name: SHIMA MARU

STEM. STERNFRAME & RUDDER.

of Vessel as built
Kept. No. _____

TEIKOKU STEAMSHIP CO., LTD., KOBE, JAPAN.



© 2021

Lloyd's Register
Foundation

009287-009300-0107