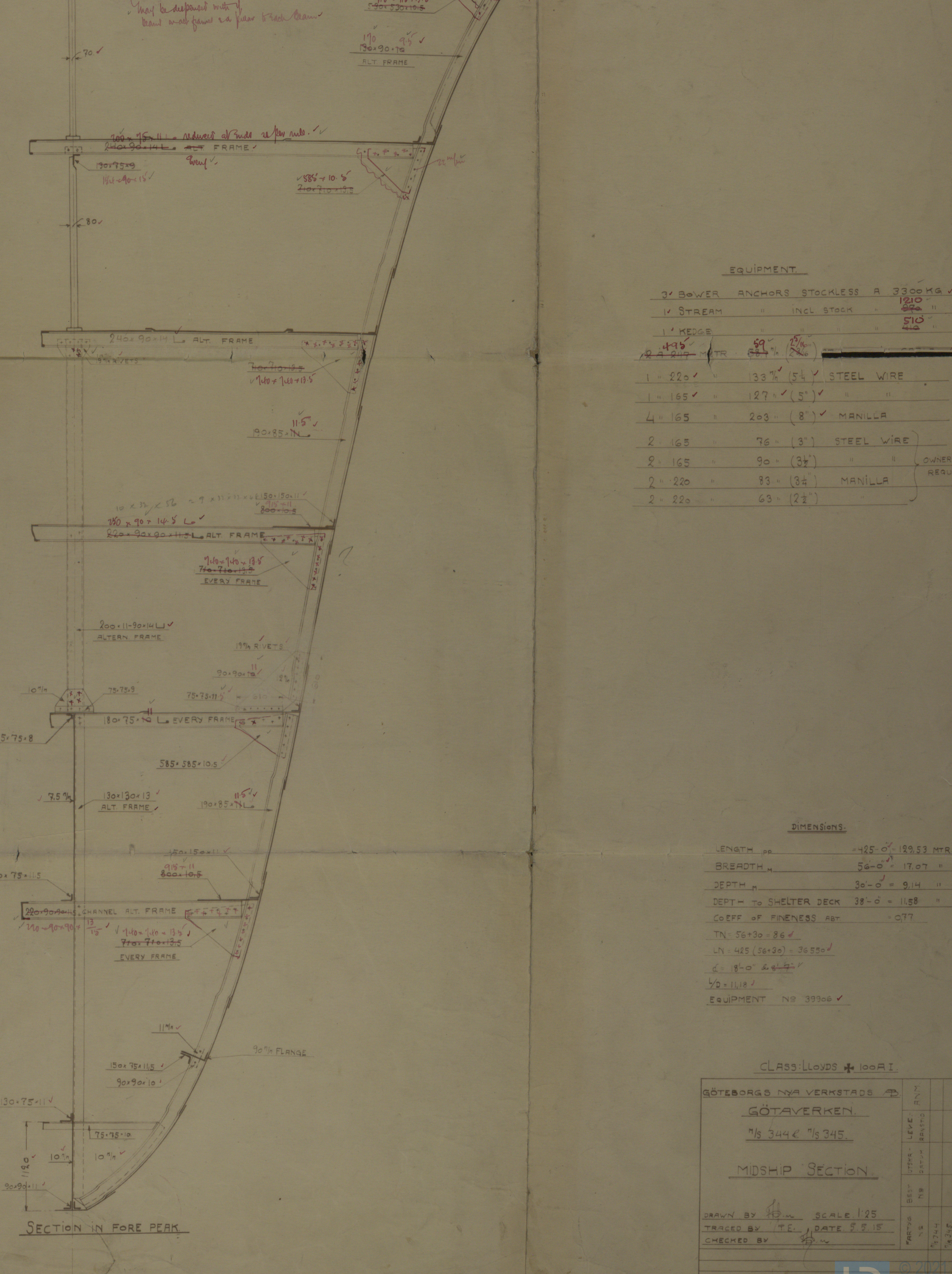
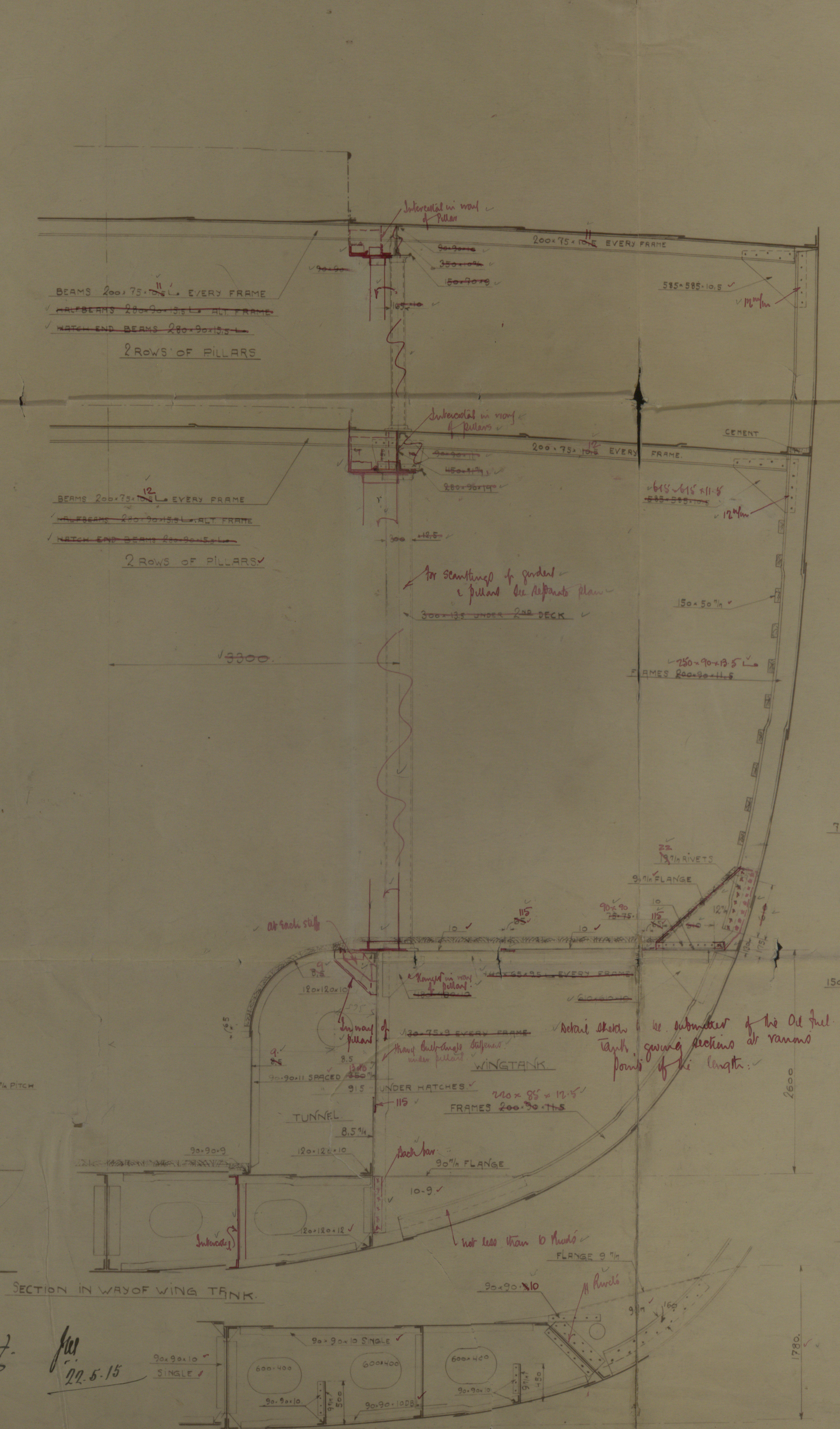
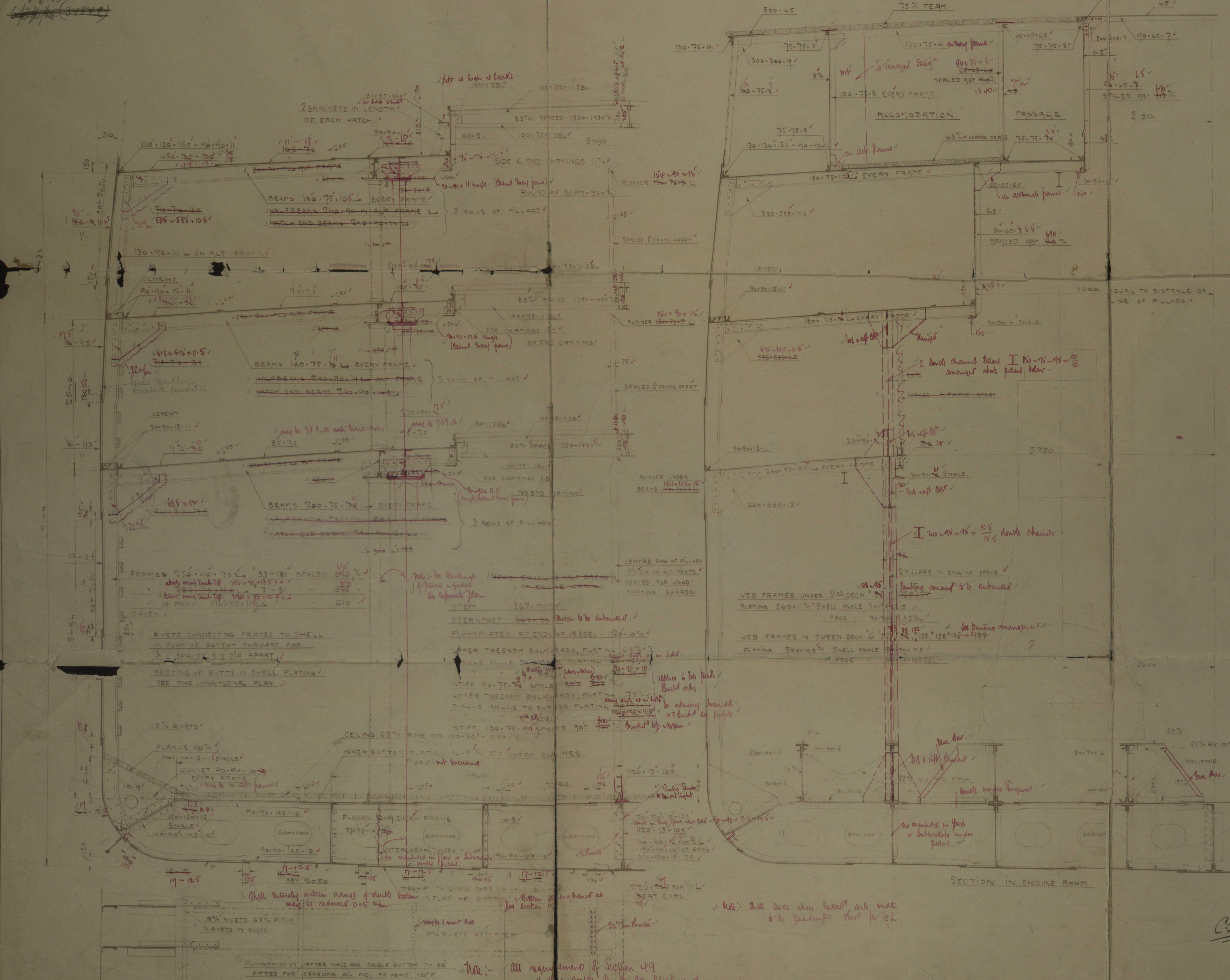


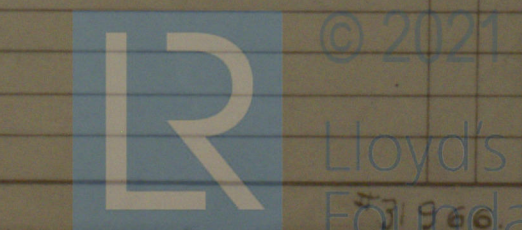
1.6.15
~~1.6.15~~



EQUIPMENT	
2 BOWER ANCHORS STOCKLESS A 33000 LB	
1 V. STREAM	INCL. STOCK
1 KEDGE	510
1 220	130 (5 1/2) STEEL WIRE
1 165	127 (5) "
4 165	203 (8) MANILLA
2 165	76 (3) STEEL WIRE
2 165	90 (3 1/2) "
2 220	83 (3 1/2) MANILLA
2 220	63 (2 1/2) "

DIMENSIONS	
LENGTH	425' 0" 129.53 MTR
BREADTH	56' 0" 17.07 "
DEPTH	30' 0" 9.14 "
DEPTH TO SHELTER DECK	38' 0" 11.58 "
COEFF. OF FINENESS	.077
TN. 56' 30" 16.93	
LN. 425 (30' 0") 30.00	
6' 18" 0.61	
50' 11.18	
EQUIPMENT	NO 39900

CLASS LOADS 1000	
GÖTEBORGS NYA VERKSTÄDS	
GÖTAVÄRKEN	
75 344 75 345	
MIDSHIP SECTION	
DRAWN BY	SCALE 1/25
TRACED BY	DATE 2.2.15
CHECKED BY	



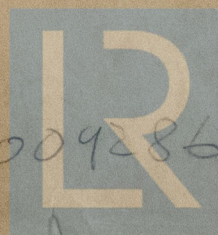
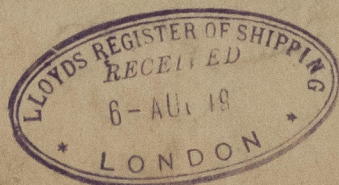
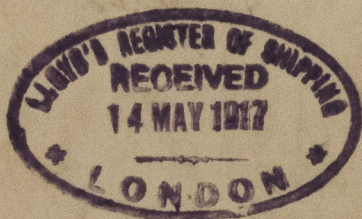
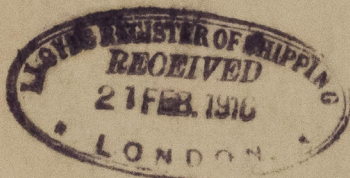
II

Midships Section

N. S. Nos 344 & 345

Göteborgs Kpa Verkskadsabblisbolag

Göteborg.



© 2021

00 9278-00 9286-Lloyd's Register
Foundation

1 " 220 ✓	"	133 7/8 (54) ✓	STEEL WIRE	
1 " 165 ✓	"	127 " (5") ✓	"	"
4 " 165	"	203 " (8") ✓	MANILLA	
2 " 165	"	76 " (3")	STEEL WIRE	OWNERS REQU.
2 " 165	"	90 " (3 1/2")	"	
2 " 220	"	83 " (3 1/4")	MANILLA	
2 " 220	"	63 " (2 1/2")	"	

DIMENSIONS.

LENGTH _{pp}	= 425'-0" = 129.53 MTR.
BREADTH _m	56'-0" = 17.07 "
DEPTH _m	30'-0" = 9.14 "
DEPTH TO SHELTER DECK	38'-0" = 11.58 "
COEFF OF FINENESS ABT.	= 0.77
TN = 56+30 = 86 ✓	
LN = 425 (56+30) = 36550 ✓	
d = 18'-0" 28'-7" ✓	
L/D = 11.18 ✓	
EQUIPMENT	Nº 39906 ✓

CLASS: LLOYDS + 100A I.

GÖTEBORGS NYA VERKSTADS AB		ANN				
GÖTAVERKEN.		LEVEL				
Nºs 344 & Nºs 345.		RANSTID				
MIDSHIP SECTION.		UTSÅR - DATUM				
DRAWN BY <i>H.M.</i> SCALE 1:25		BEST NØ				
TRACED BY T.E. DATE 5.5.15		FARTSG NØ	Nº 344	Nº 345		
CHECKED BY <i>H.M.</i>						

#31966.

009278-004286-0013

009278-004286-0013



© 2021
Lloyd's Register
Foundation