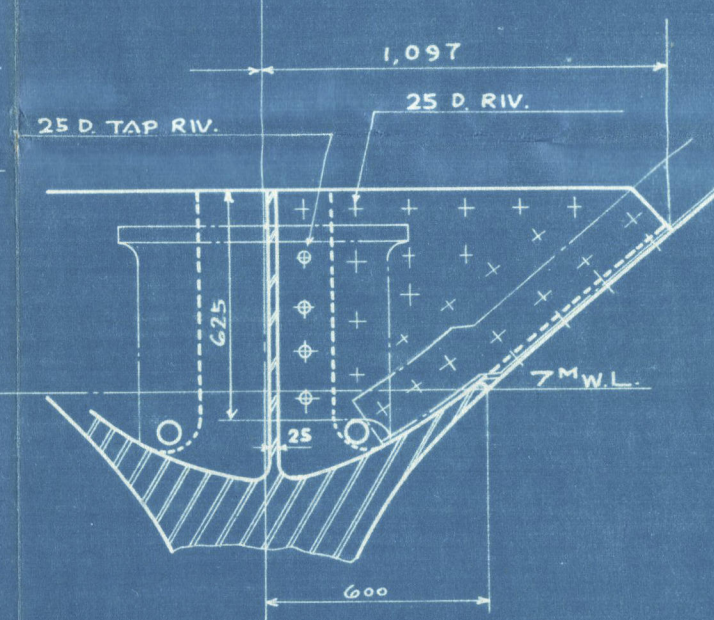
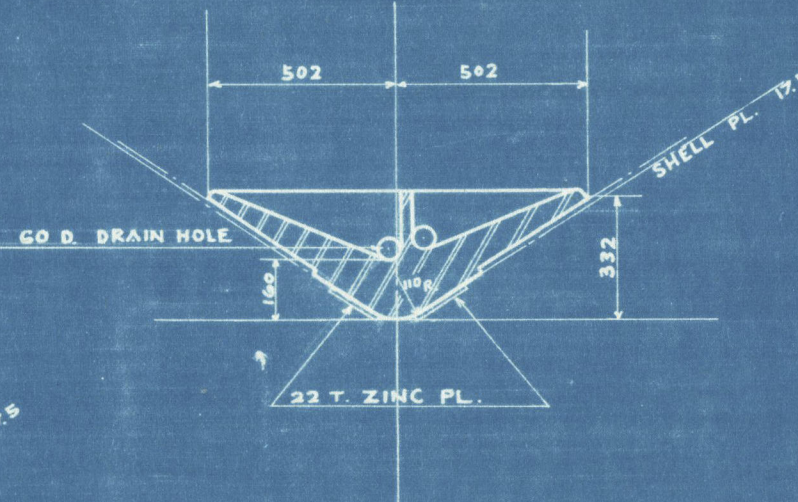


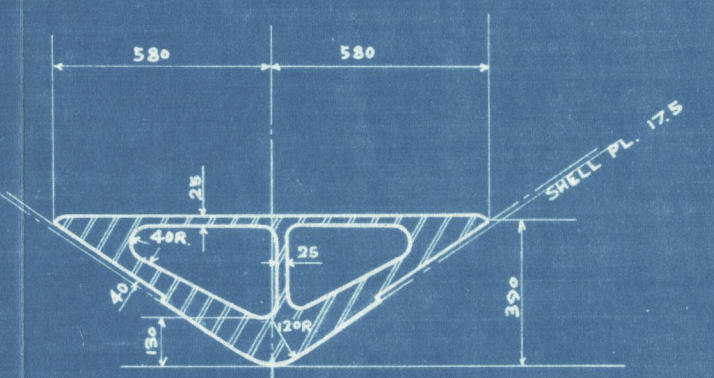
SECTION AT FN 0  
LOOKING AFTWARD



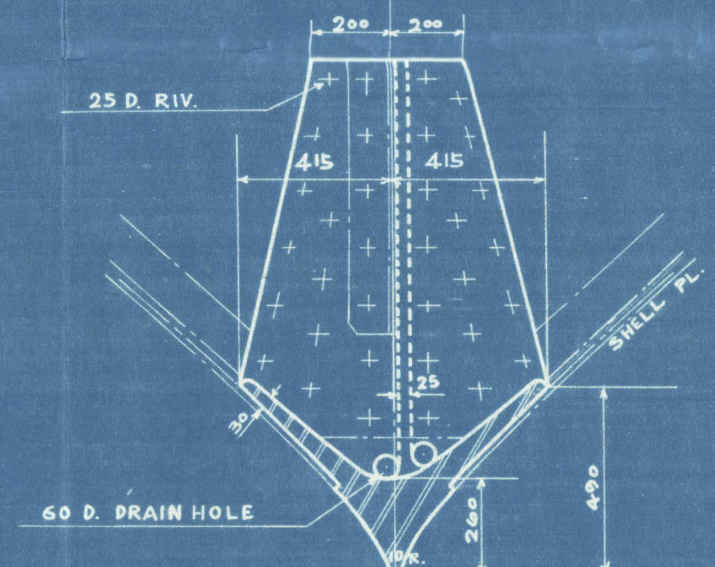
SECTION AT FN 2  
LOOKING AFTWARD



SECTION AT FN 1  
LOOKING AFTWARD

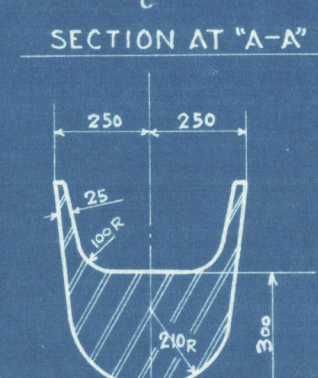
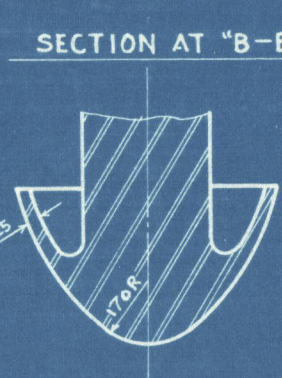
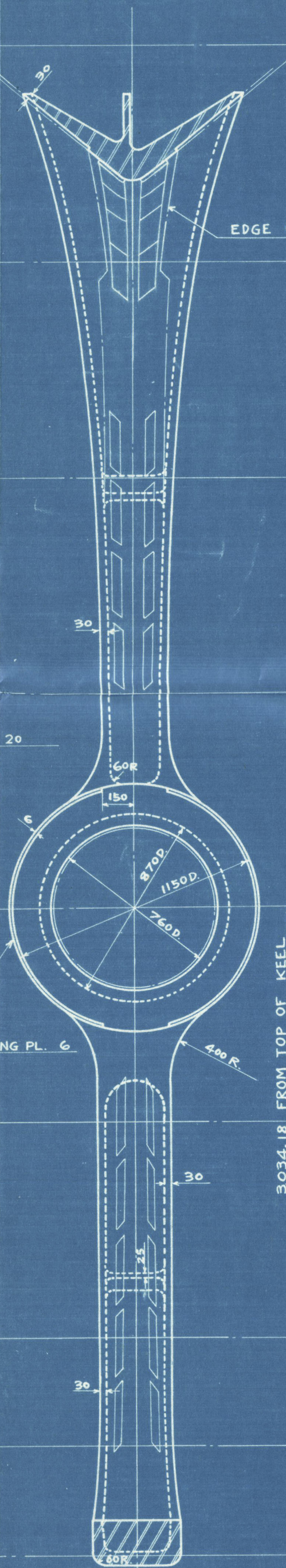


SECTION AT FN 3  
LOOKING AFTWARD

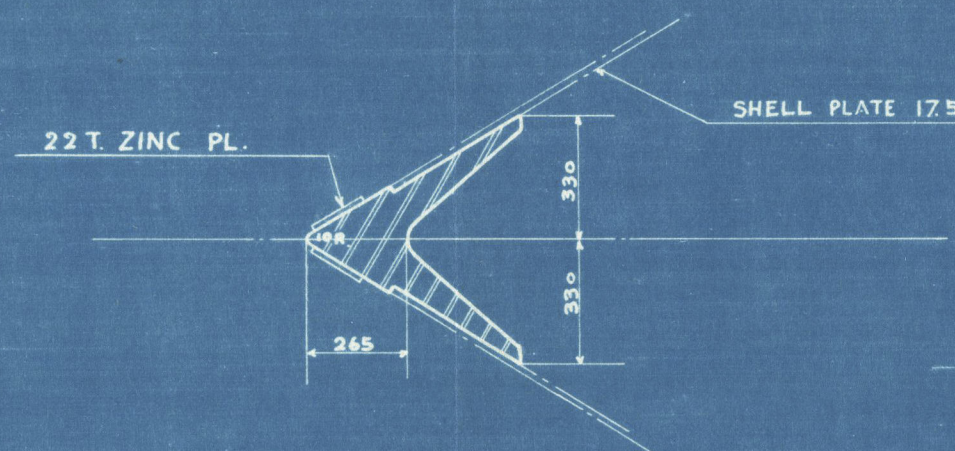


MATERIAL CAST STEEL.  
WEIGHT ~ 18,525 KGS.

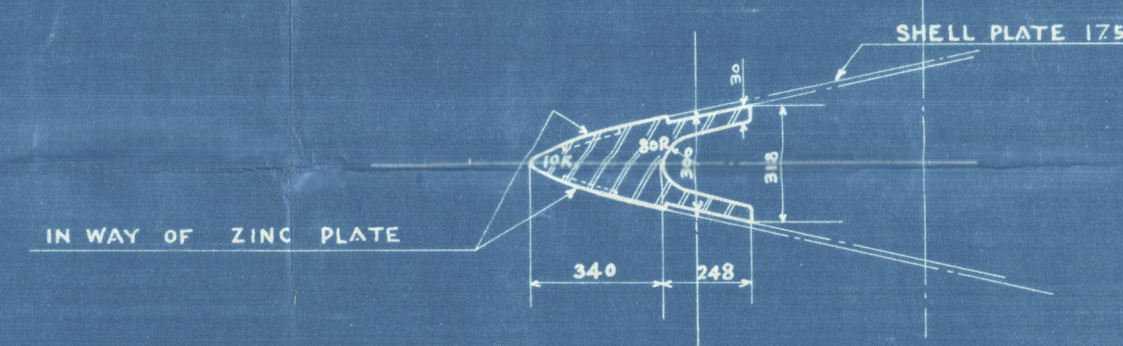
PROPELLER POST.  
LOOKING FORWARD.



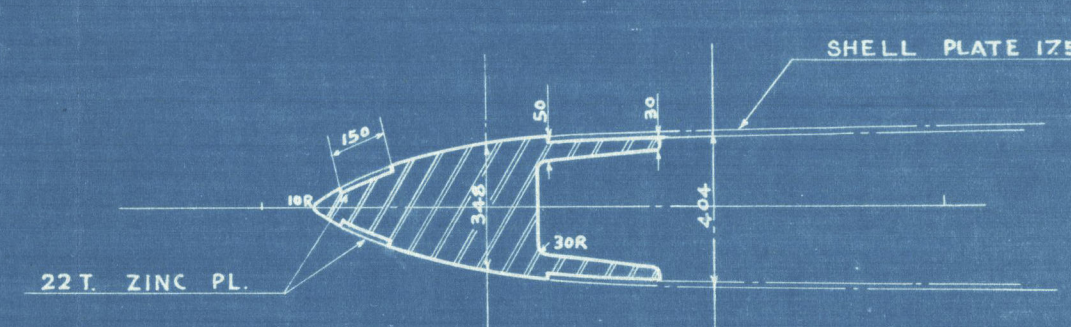
SECTION AT 6" WL.



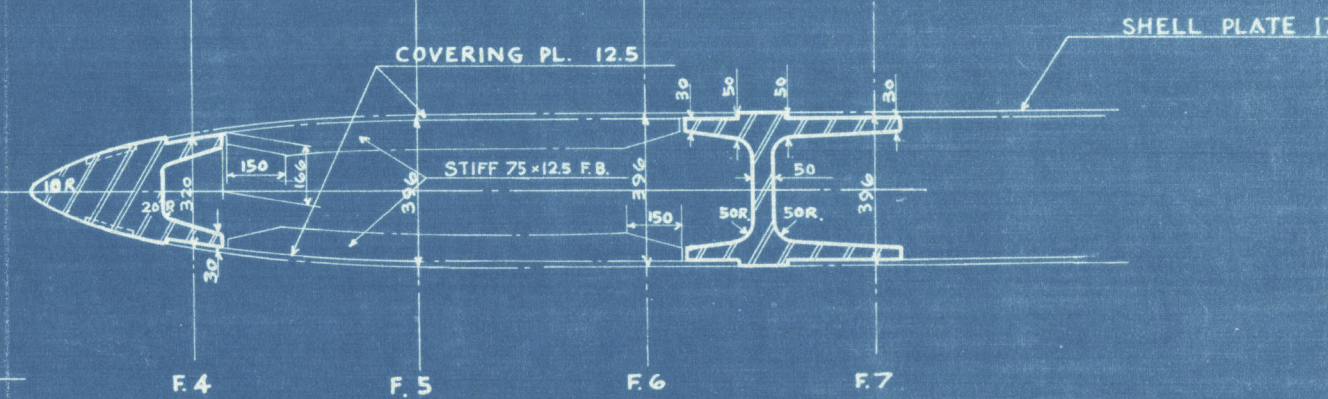
SECTION AT 4" WL.



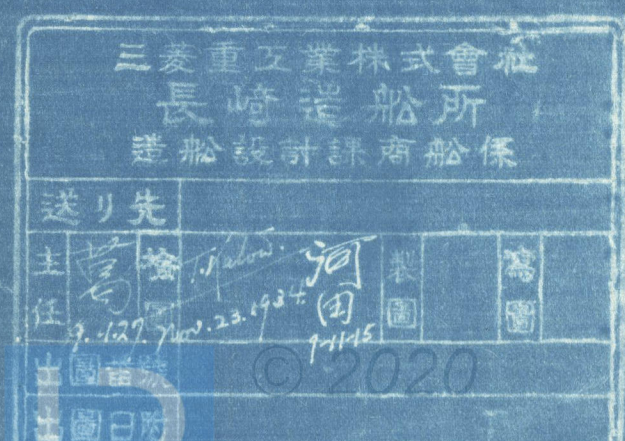
SECTION AT 2" WL.



SECTION AT 1/2" WL.



"Noshiro Maru"  
ex SN 581  
M.S. "NOSHIRO MARU"  
STERN FRAME  
(FINISHED PLAN)  
SCALE 1/20  
136" x 19" x 105"





"Noshiro Maru"

Nagasaki Report No 2005

ex SN<sup>o</sup> 581

M.S. "NOSHIRO MARU"

STERN FRAME

(FINISHED PLAN)

SCALE 1/20

136<sup>m</sup> x 19<sup>m</sup> x 10.5<sup>m</sup>.

三菱重工業株式会社			
長崎造船所			
造船設計課商船係			
送り先			
主任	河田	園	園
9.12.27	9.23.1934	7.11.45	
出図番號			
出図日附			



009256 - 009266 - 0084

009256 - 009266 - 0084

Lloyd's Register  
Foundation