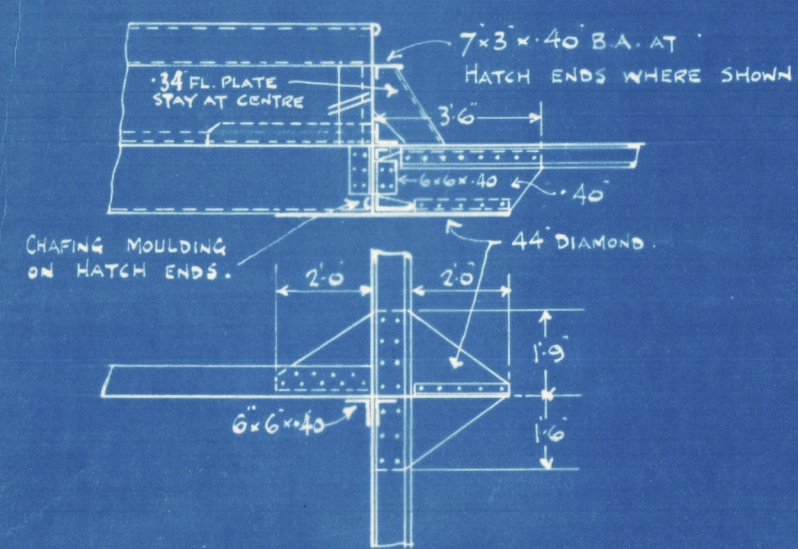
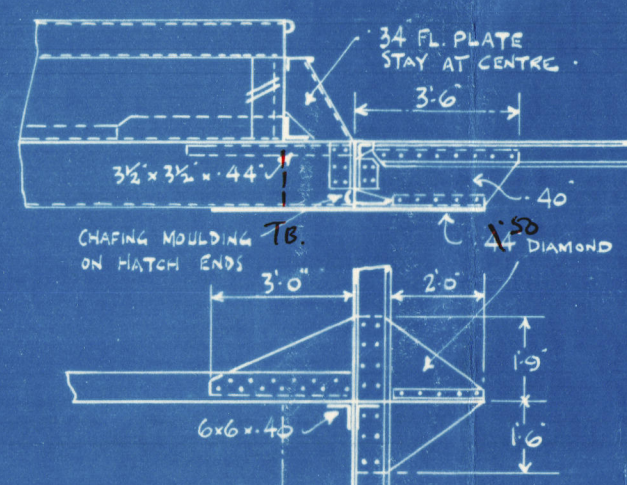


8.6.37

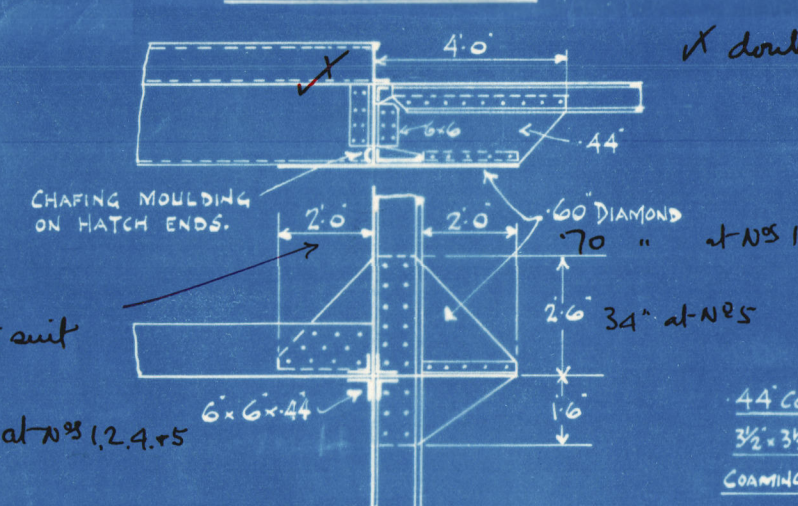
HATCH CORNER DIAMOND PLATES
AT UPPER DECK.



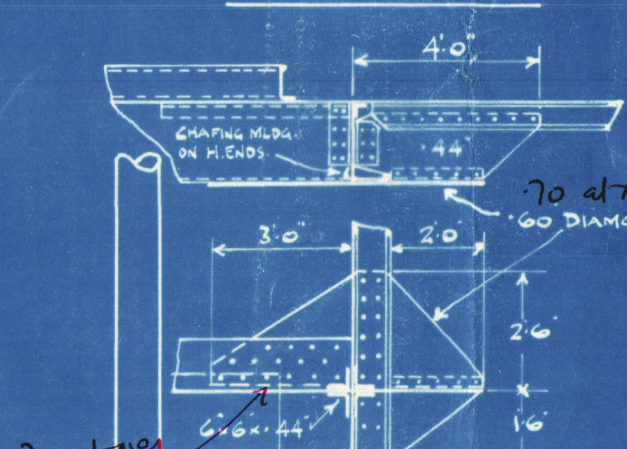
HATCH END CLEAR OF DEEP BEAM.
HATCH CORNER DIAMOND PLATES
AT UPPER DECK.



AT SECOND DECK.



AT SECOND DECK.



SS N°584.

PROFILE.

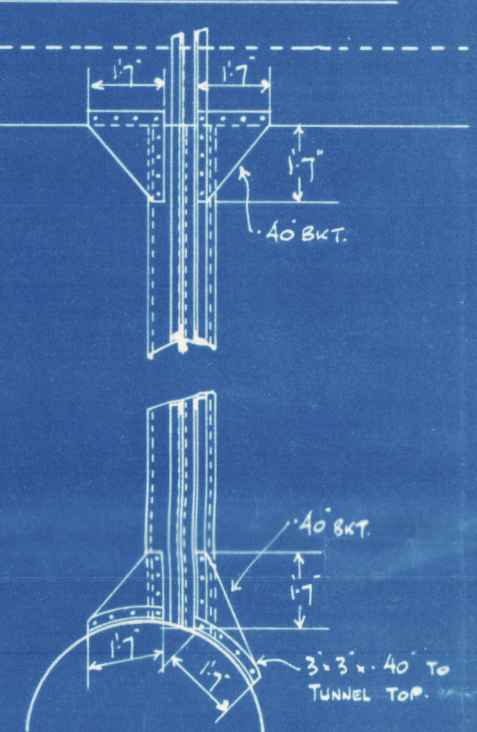
415' 0" L.B.P. x 58' 4 1/2" B.DTH. EX. x 35' 9" D.MLD. UPPER DK.
20' 10" " SECOND "

— COMPLETE SUPERSTRUCTURE TYPE —

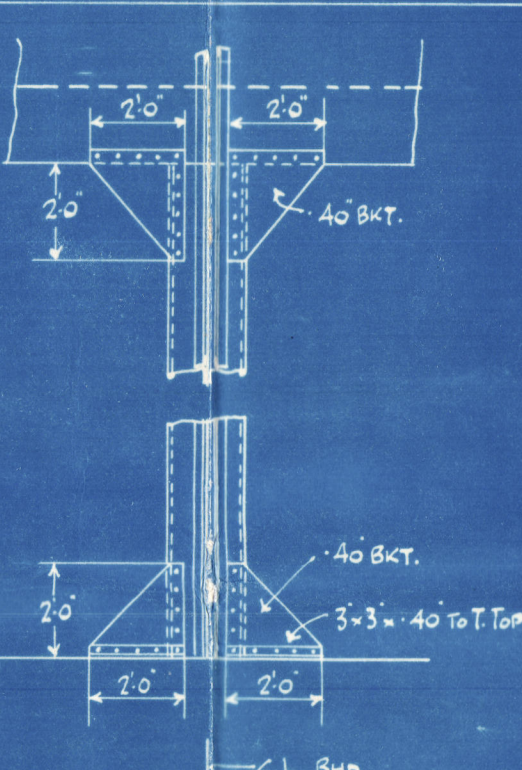
— LLOYD'S 100A1 CLASS. —

scale: 1/8" = 1 foot.

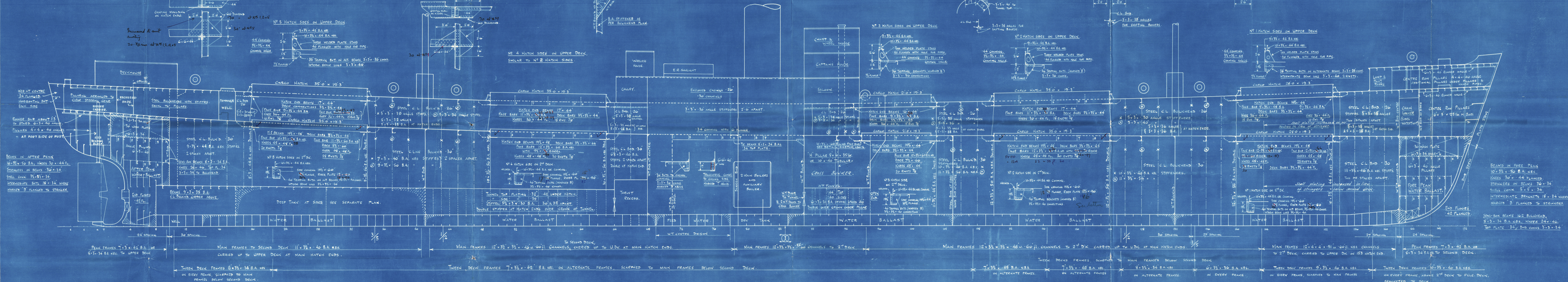
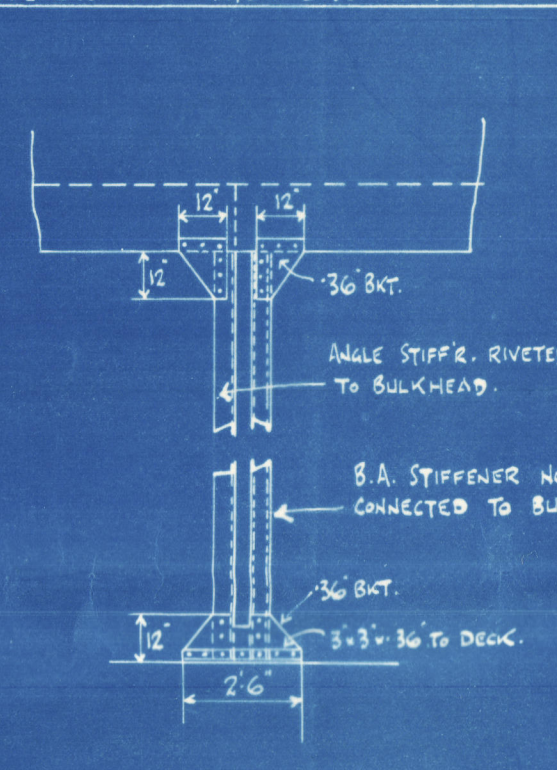
SECTION SHOWING CONN. OF CL BHD.
STIFFENERS AT HATCH ENDS IN AFTER
HOLDS AND SHUTT TUNNEL TOP.



SECTION SHOWING CONN. OF CL BULK.
STIFFENERS AT HATCH ENDS IN HOLDS.



SECTION SHOWING CONN. OF CL BHD.
STIFFENERS AT HATCH ENDS IN TWIN DKS.



BEAMS IN FORE PEAK
10' 3/4" x 50 B.A. NBS.
KNEES 30" x 44 FLANGED.
STIFFENERS ON BEAMS 30" x 34
SHELL CONN. 5' 5" x 34
INTERMEDIATE BRACKETS 18" x 34 WHERE
MARKED 'B' FLANGED TO STRINGERS.

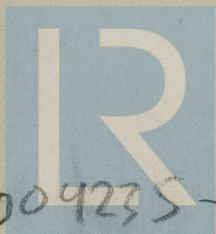
SEMI-BOX BEAMS 162 BULKHEAD,
8' 3/4" x 34 B.A. NBS. KNEES 24" x 46
TOP PLATE 34" B.DTH. CONNS. 3' 3" x 34

Missrs. J. L. Thompson & Sons Ltd.,
Yard No 584.

PROFILE.

"N. Betagense"
"Welsh Trader".

SUNDERLAND FRT. No. 32326.



© 2020

Lloyd's Register
Foundation

004235-009242-0107