

SHIP No. 387. TANK DECK. Scale 1/4" = One Foot.

FRAME KNEE.

SIDE LONG. BHD. KNEE.

C.L. BHD. KNEE.

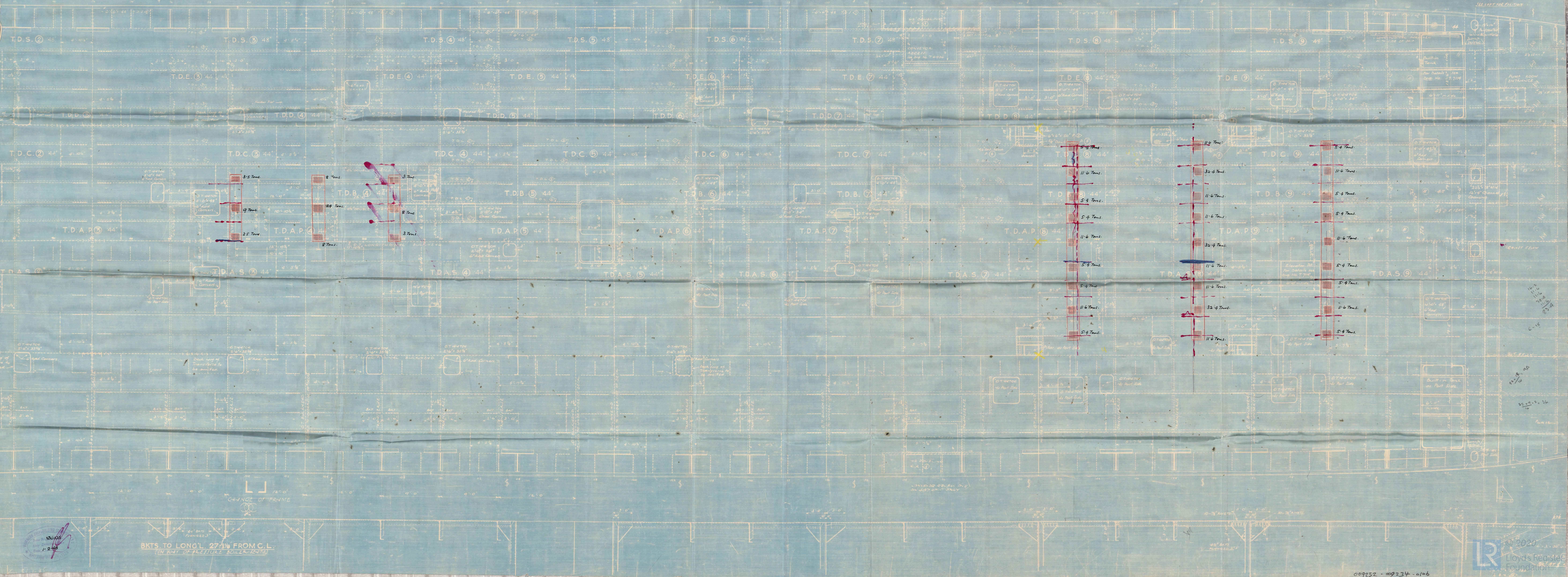
FRAME KNEE No. 114.

TYPICAL SEAM RIVETING.

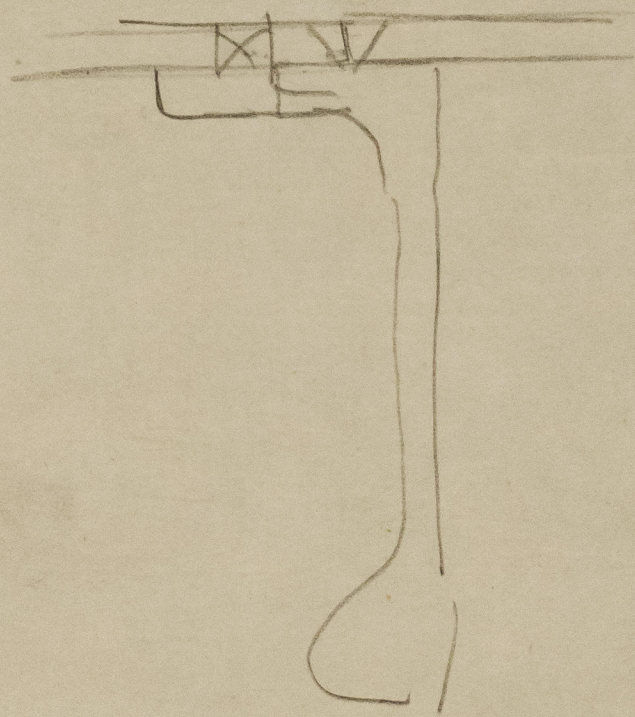
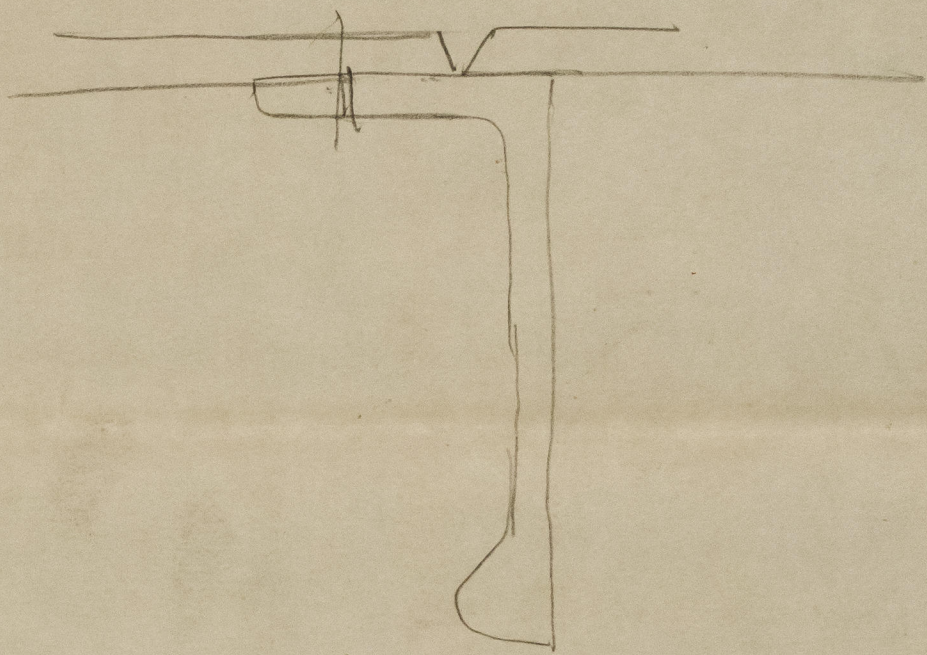
TYPICAL RIVETING OF LONGITUDINALS.

WELDING OF C.L. & LONG. BHD'S. TO TANK DECK.

FOR THREE DECK TRANSVERSIES Nos. 141, 152, 156, 159 & 161.
SEE DRG. NO. T. 7134 - "FORWARD THREE DECK TRANSVERSIES IN FACTORY."



BKTS. TO LONG. L. 27 1/2" FROM C.L.
(IN WAY OF PRESSURE BOLLARDS)



009232-009234-0106



© 2020

Lloyd's Register
Foundation