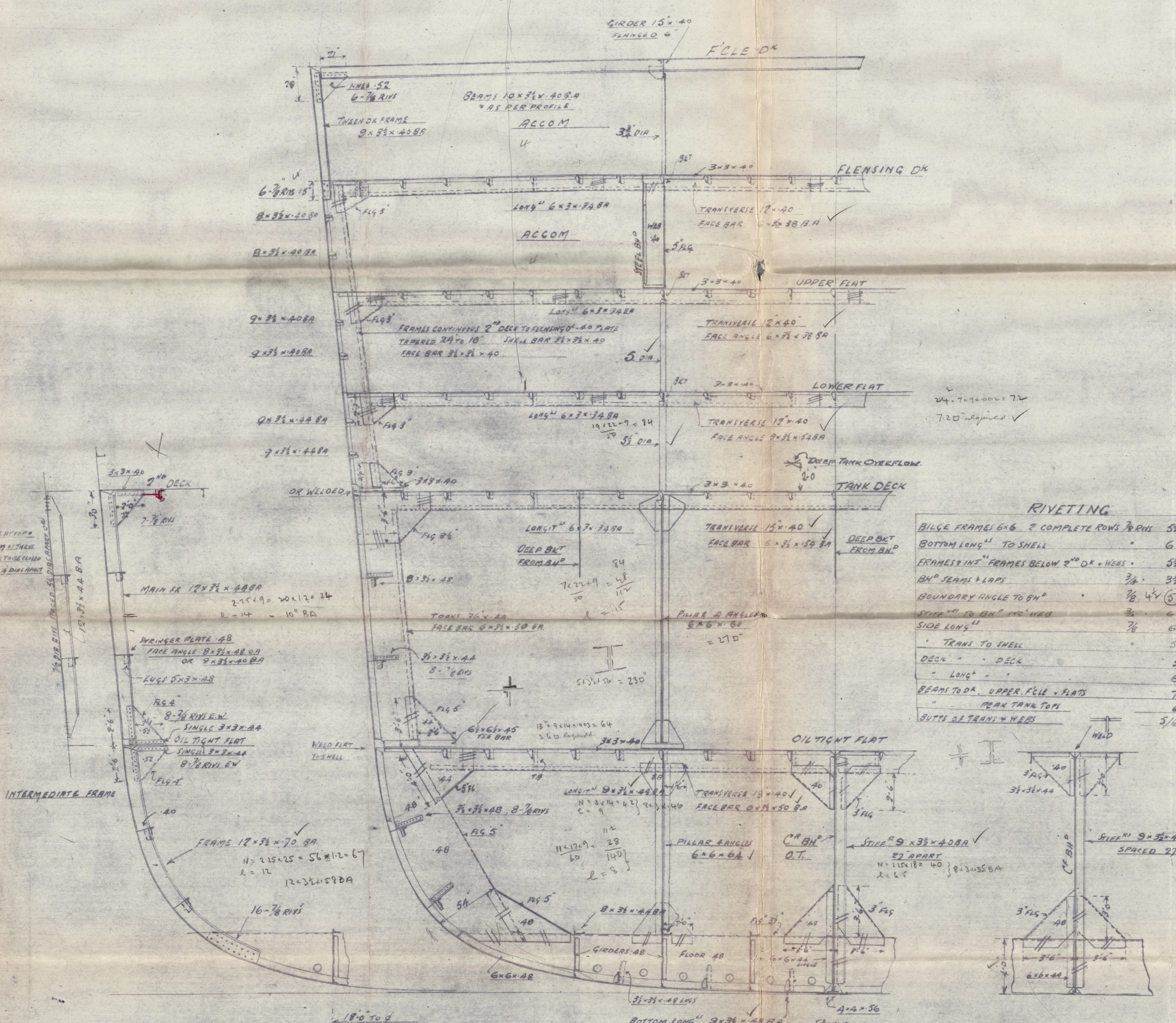


N^{OS} 387 TRANSVERSES IN FORE HOLD& SECTION THRO' FORE PEAK

SCALE 1/4" = 1'



T.N. 665a

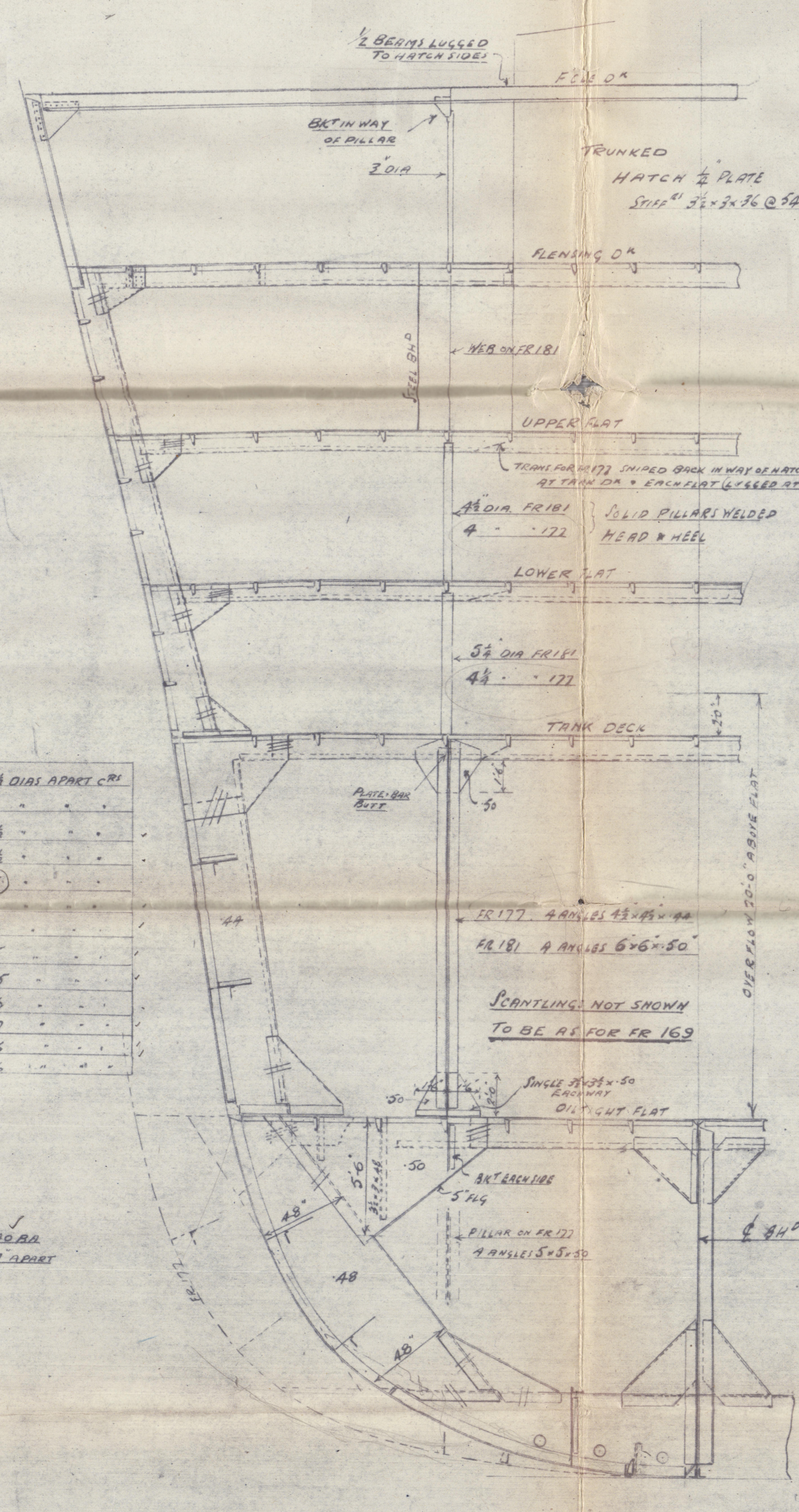
FRAME 169

LOOKING FOR

TRANSVERSE FRAME 169

LOOKING FOR

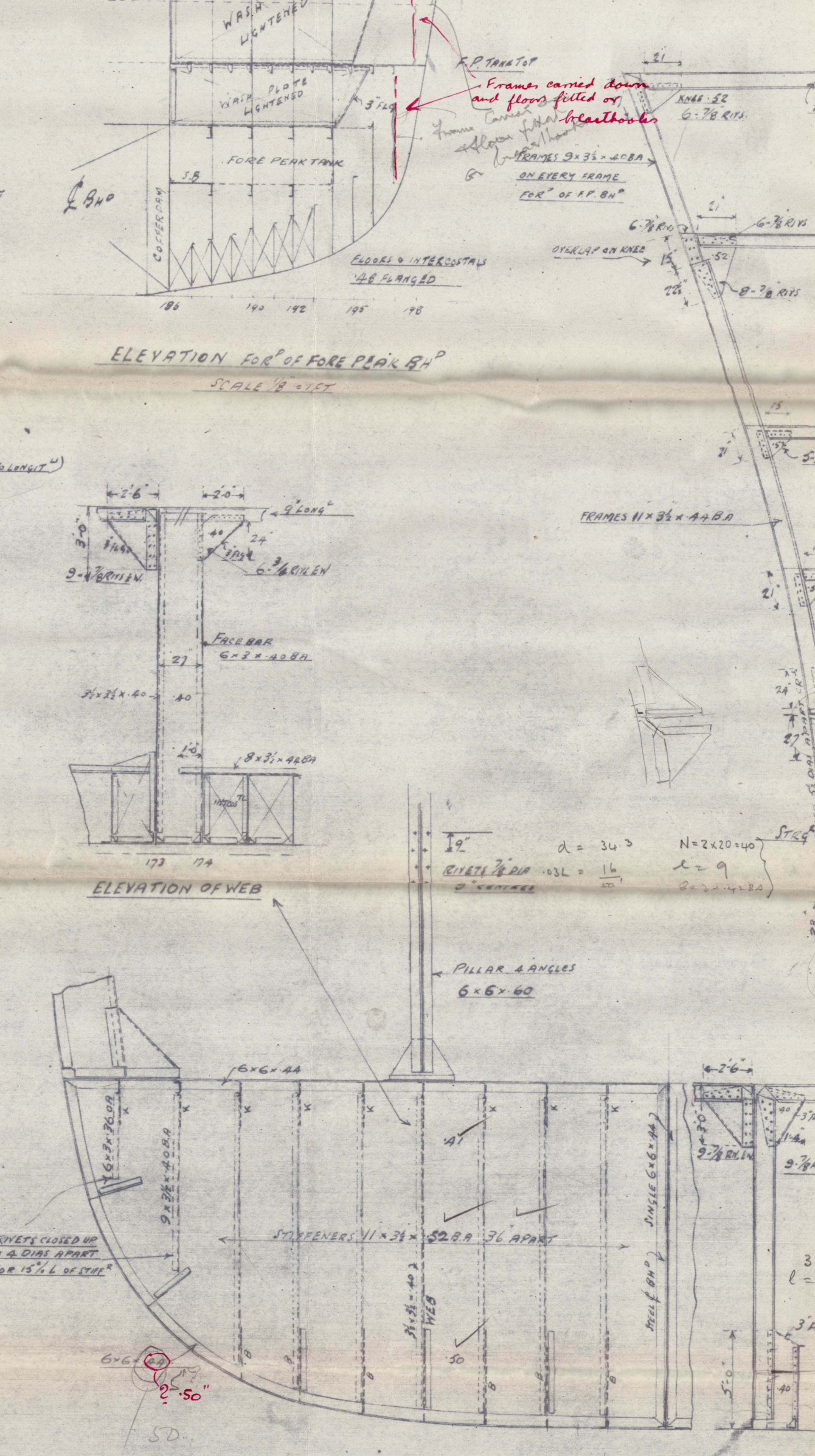
FLOORS EVERY FRAME



SHOWN DOTTED

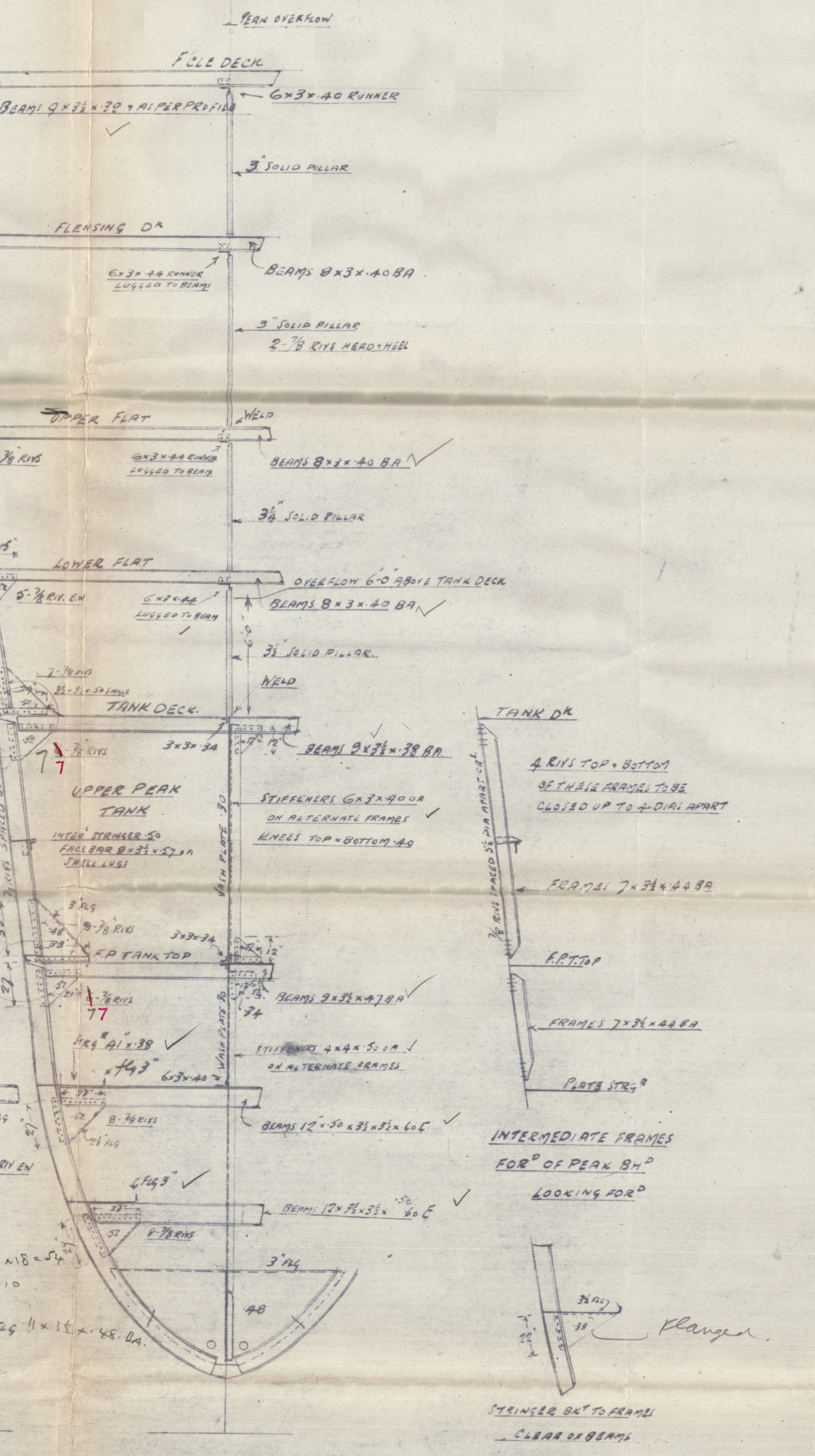
TRANSVERSE 181

LOOKING FOR



BULKHEAD FR 173

LOOKING FOR

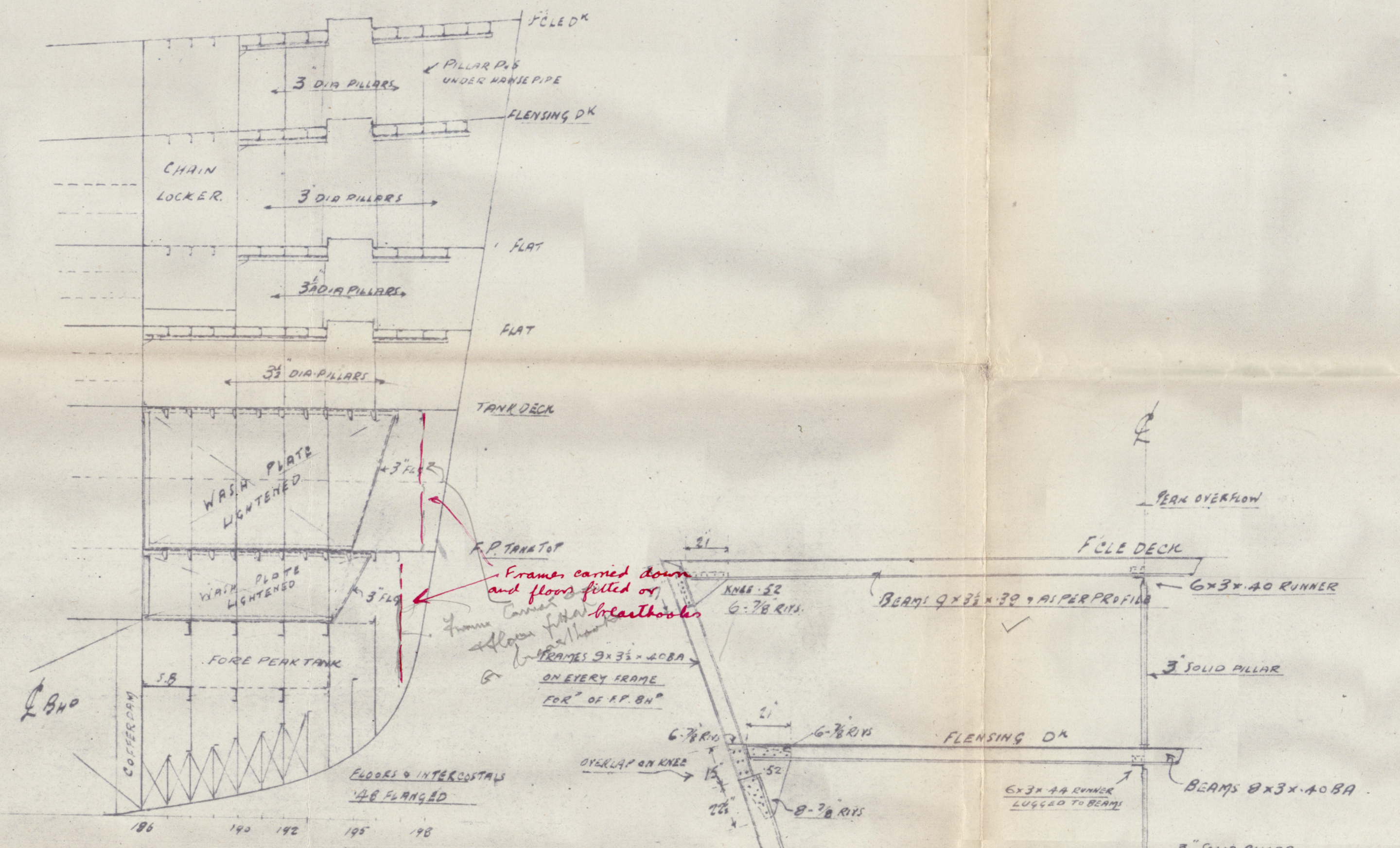


FRAME 192

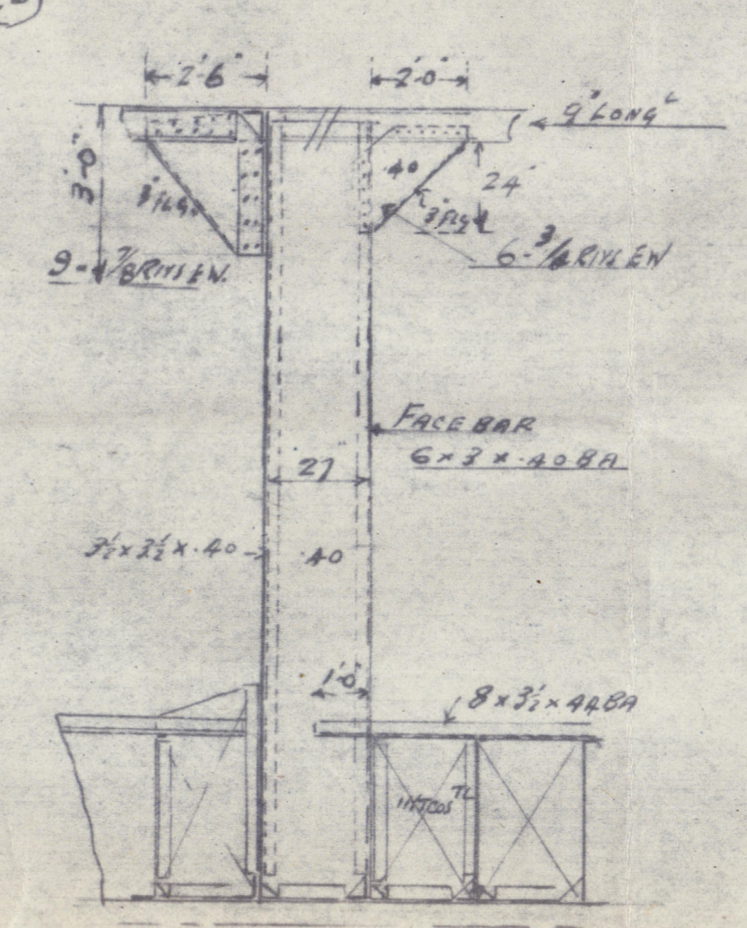
LOOKING FOR

Frames in lower hold

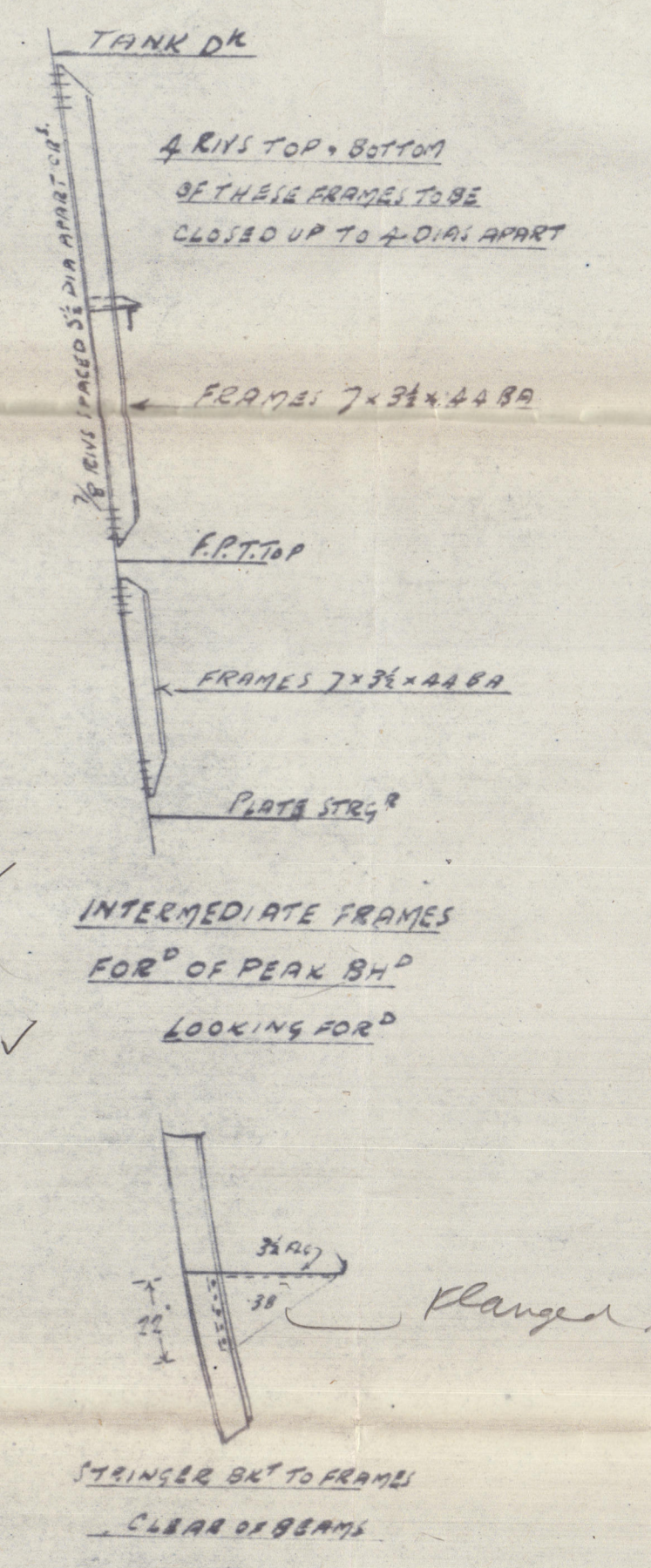
N = 2 x 40 = 80
L = 8
7 x 3 1/2 x 52 BA



SCALE 1/4" = 1'



SCALE 1/4" = 1'

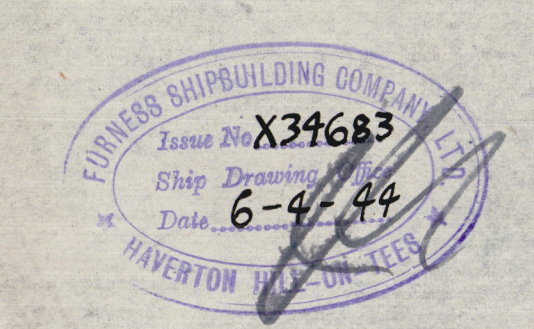


LOOKING FOR

7 APR 1944

Approved

14.4.44



11

Transverse in Fore Hold & Sect. thro' Fore Peak

Gurness & Co. No. 287.

~~Prof~~ Whaler. 525' x 74' x 57'.

14. 4. 44.

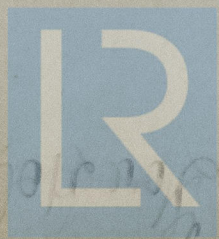
SOUTHERN VENTURER.

bag

7 APR 1944

Gurness 287

009232-009234-0104



© 2020

Lloyd's Register
Foundation

11

and vessels in the old section the