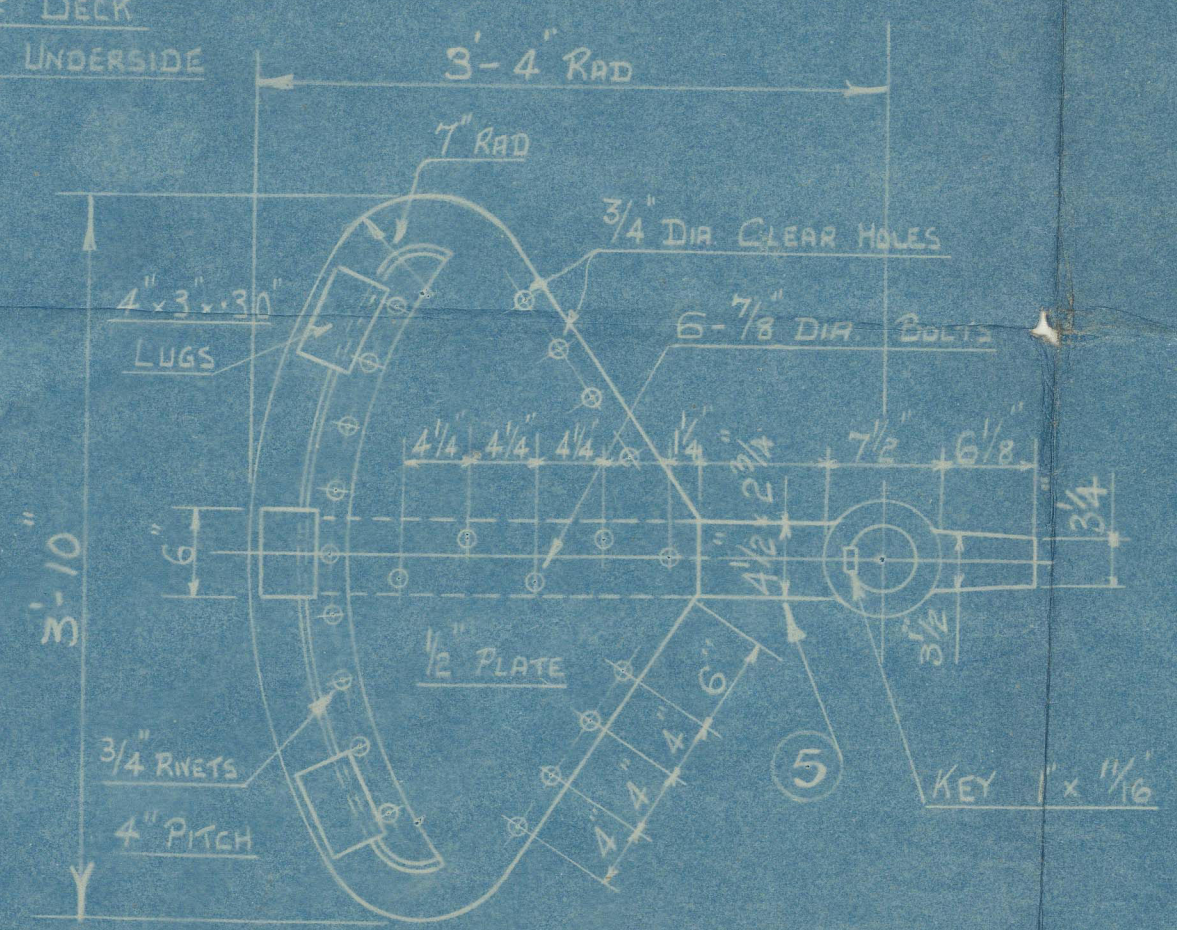
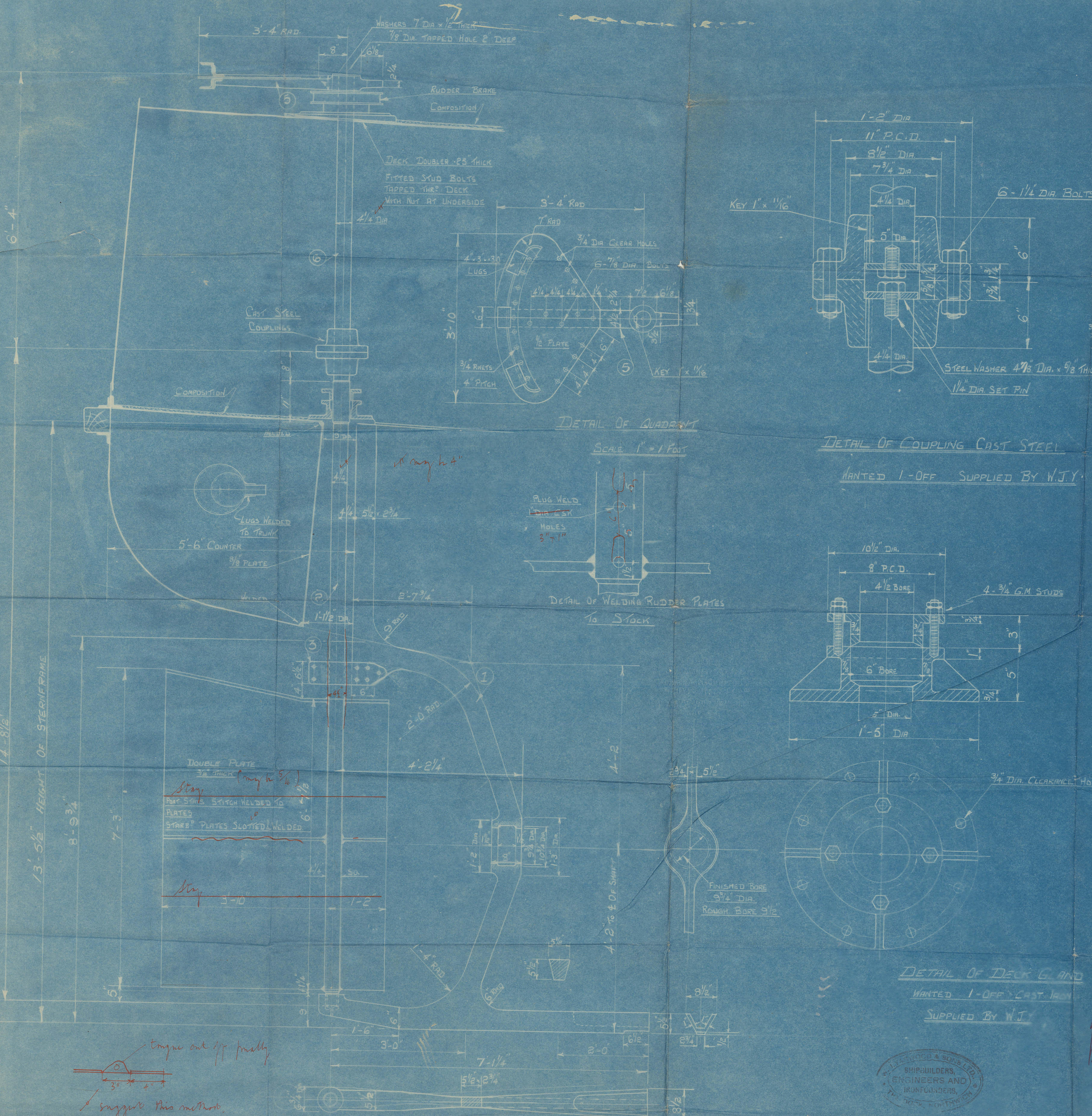


125 JAN 1943

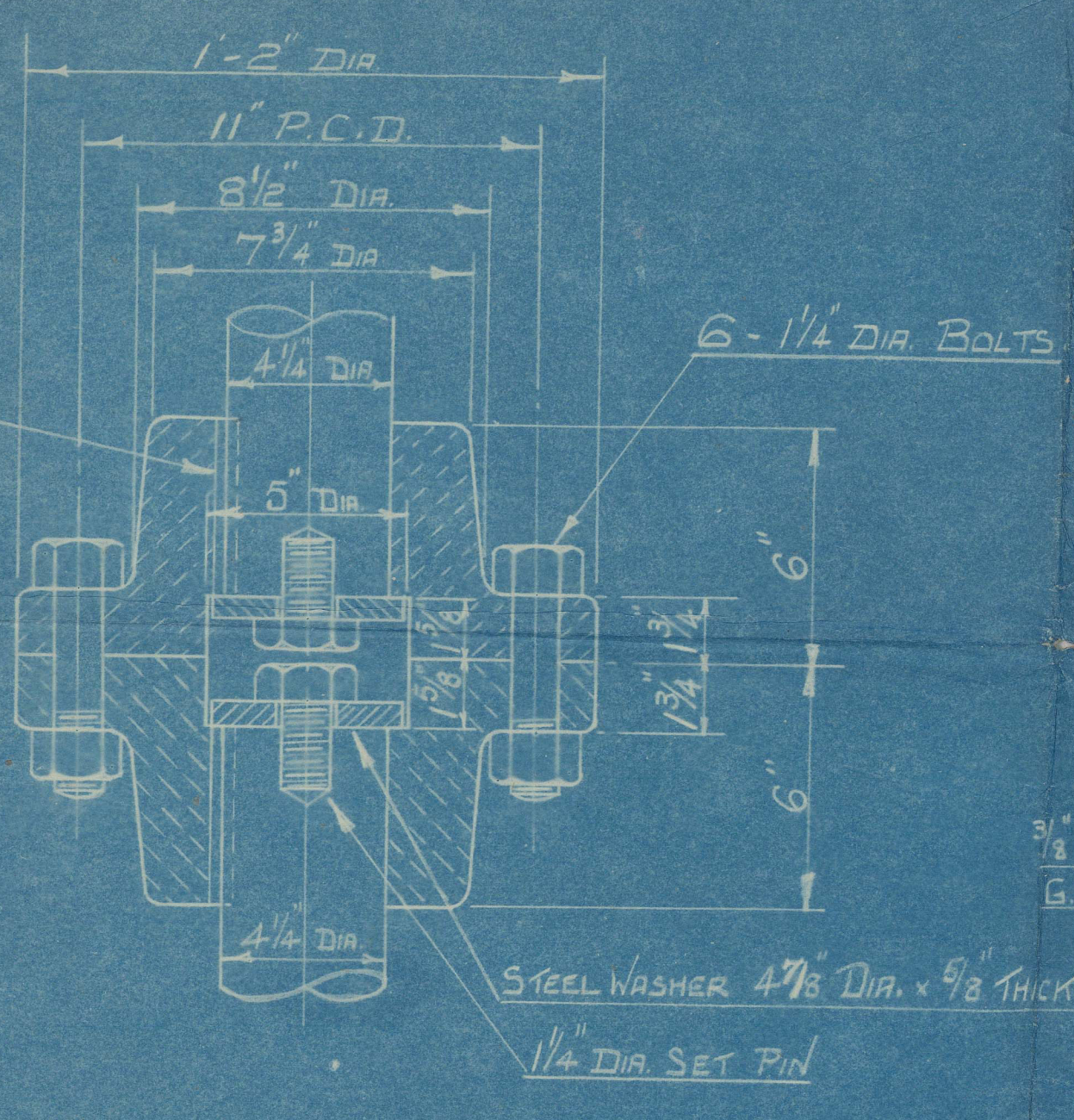
$$A \times D = 27.45 = 54.9$$

SPEED OF VESSEL 9 KNOTS



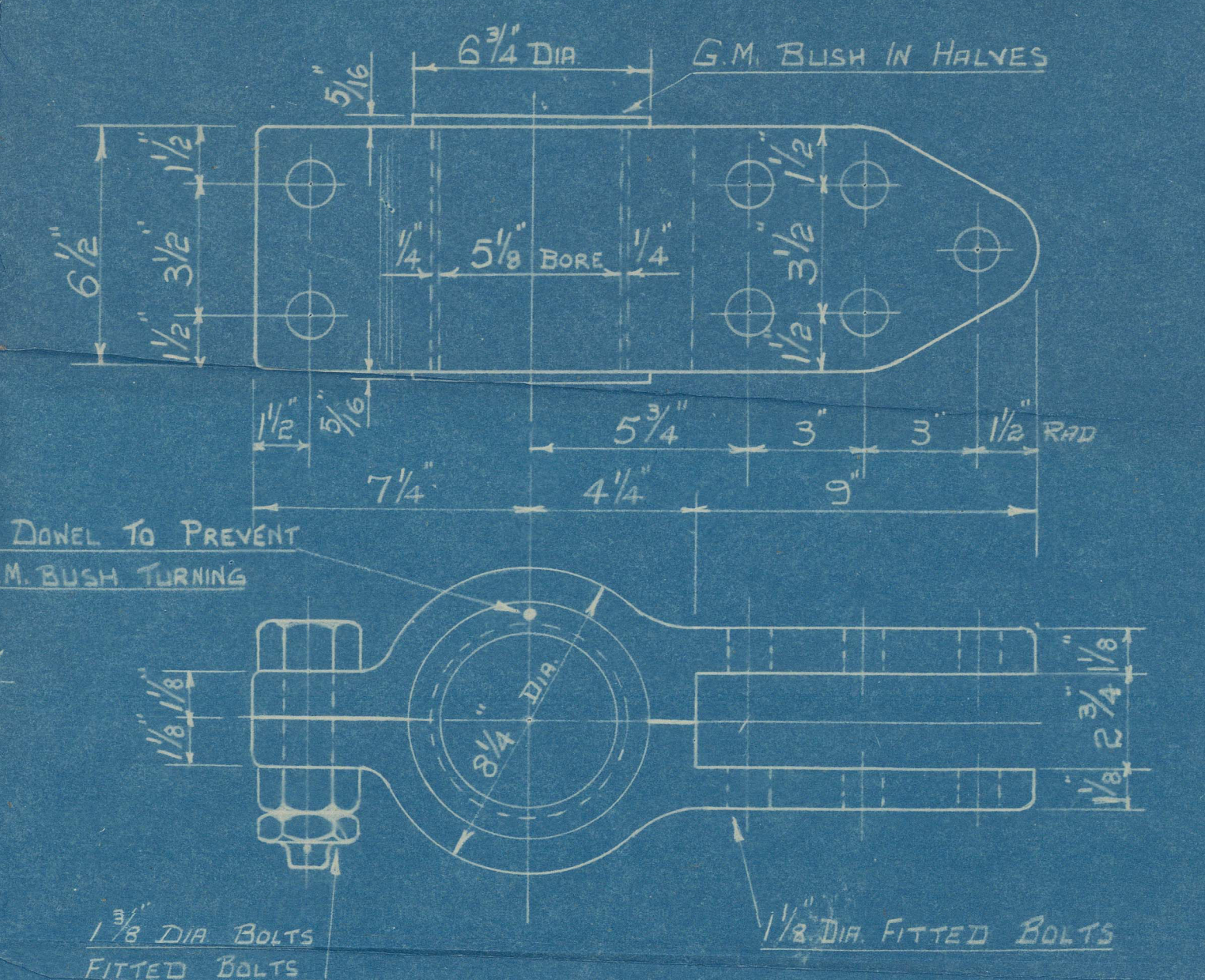
DETAIL OF QUADRANT

SCALE 1" = 1 FOOT



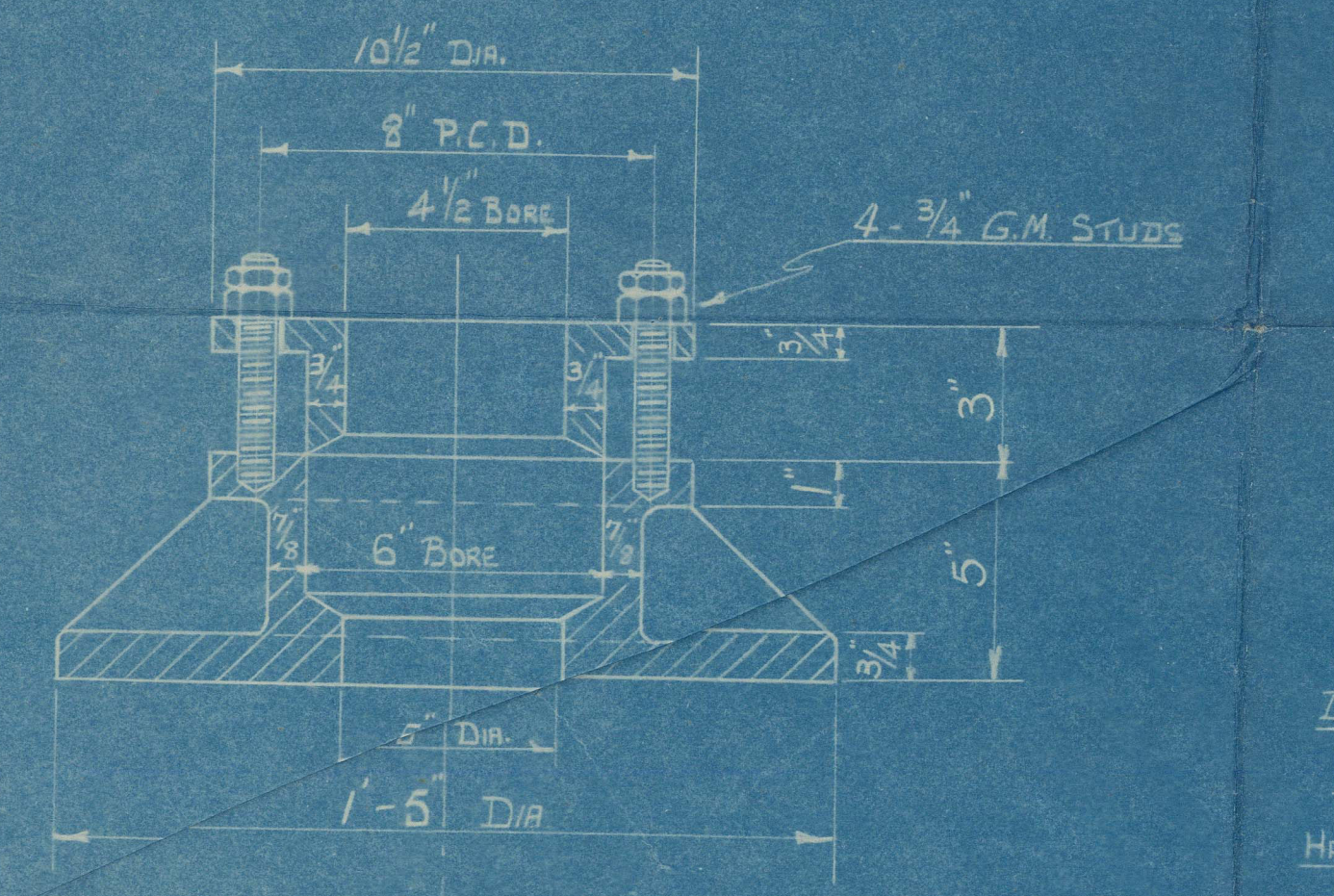
DETAIL OF COUPLING CAST STEEL

WANTED 1-OFF SUPPLIED BY W.J.Y.

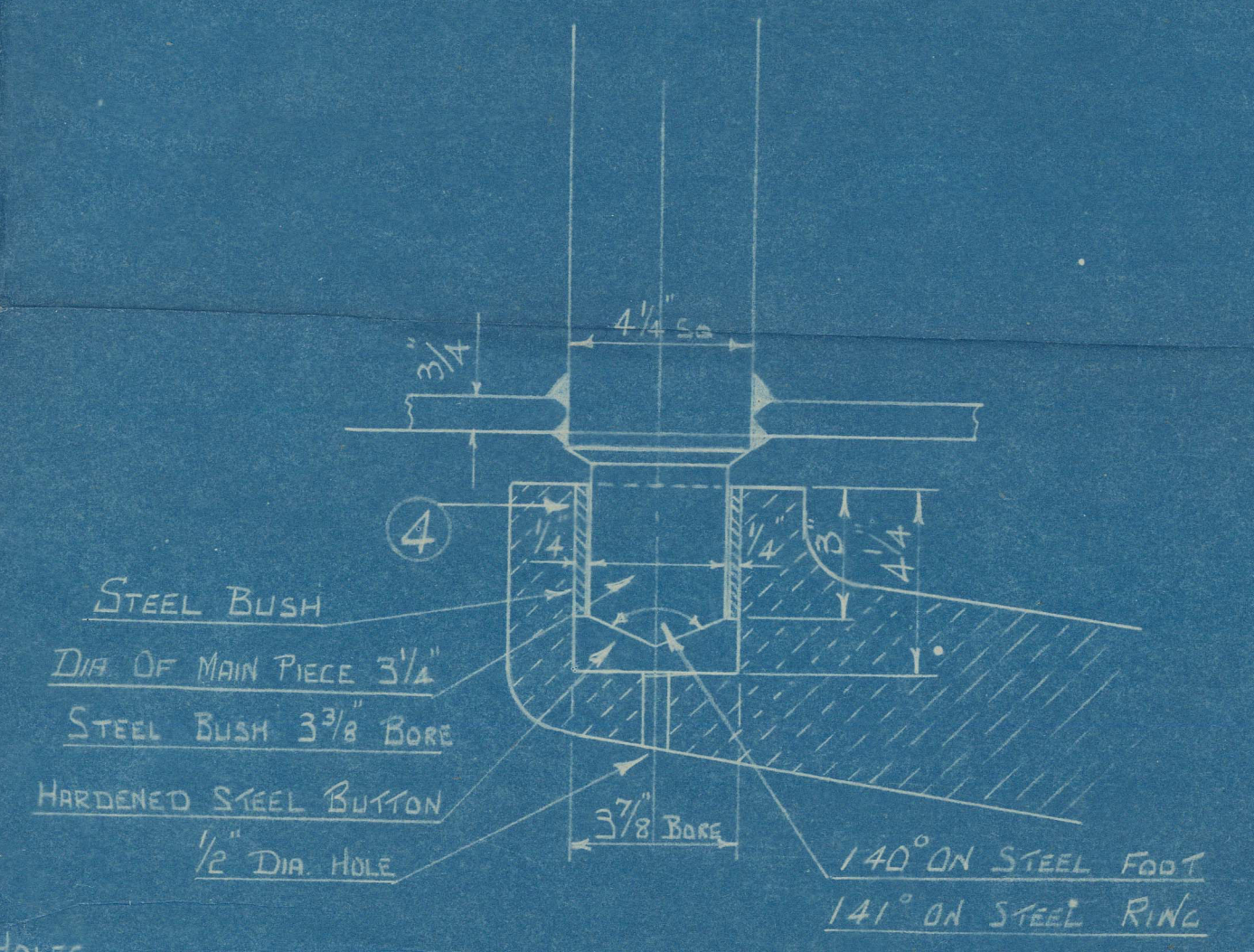


DETAIL OF SPLIT BRACE

WANTED 1-OFF

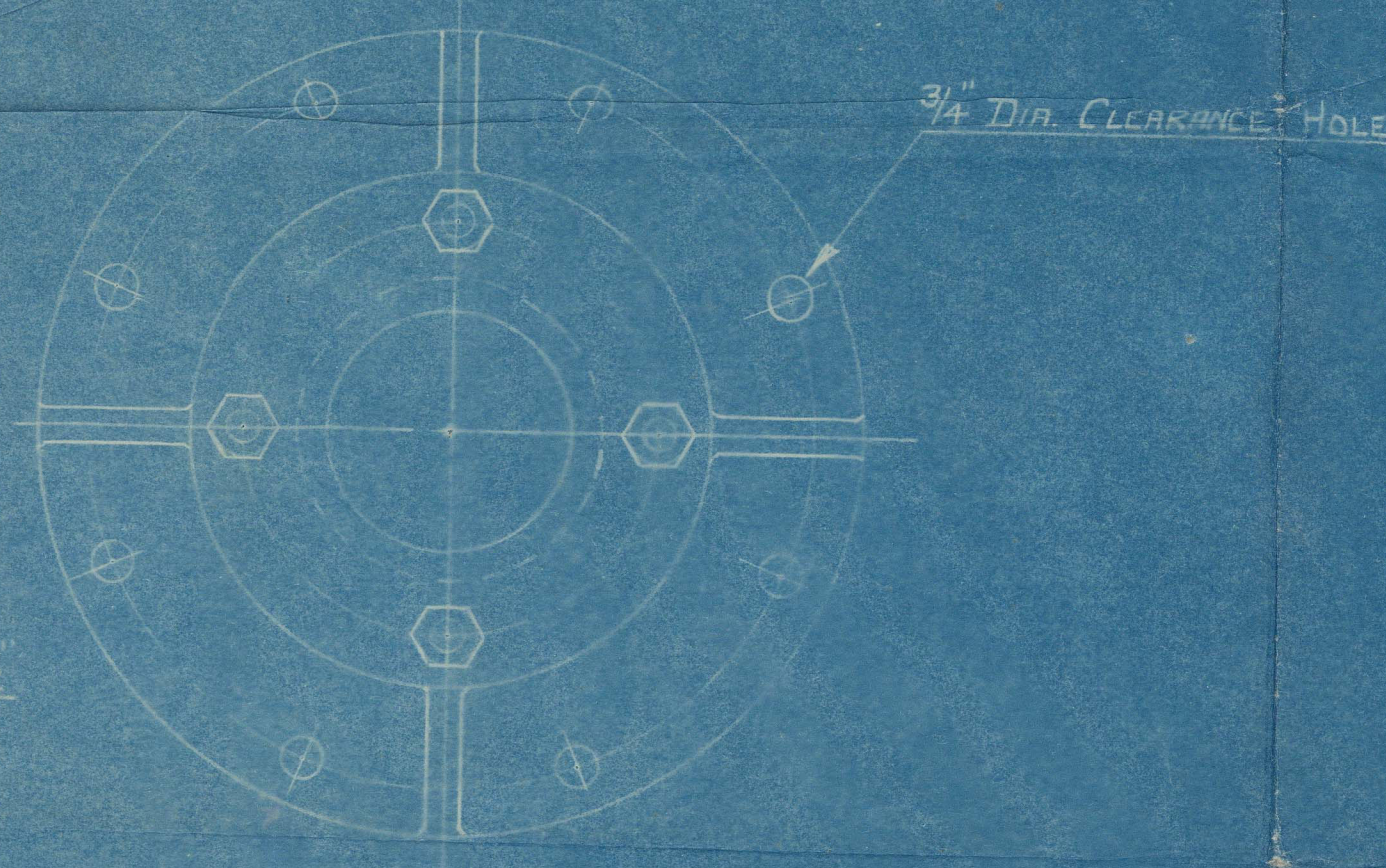


DETAIL OF WELDING RUDDER PLATES TO STOCK



DETAIL OF HEEL PIECE

SCALE 3" = 1 FOOT



DETAIL OF DECK G AND

WANTED 1-OFF CAST IRON

SUPPLIED BY W.J.

DETAIL OF STERNFRAME & RUDDER

FOR

STEEL COASTING STEAMER

SCALE 1" & 3" = 1 FOOT

NO. ON DRAWING	ITEM	NO. OFF	MATERIAL
1	STERNFRAME WITH BOSS ROUGH BORED	1	FORGED IRON
2	RUDDER STOCK IN 2 LENGTHS BOW STAYS ELECTRICALLY WELDED TO MAIN PIECE SUPPLIED BY W.J.Y. & SONS LTD	1	FORGED STEEL
3	RUDDER BRACE IN HALVES WITH GUNMETAL BUSH	1	FORGED STEEL
4	HARDENED STEEL BUTTON & BUSH	1	STEEL
5	QUADRANT ARM BORED & KEYED - READY FOR FITTING TO STOCK BOLT HOLES TO BE DRILLED	1	FORGED STEEL
6	RUDDER STOCK TOP LENGTH TO BE MACHINED READY TO RECEIVE COUPLING & QUADRANT	1	FORGED STEEL

PRINT NO. 6912
DATE 16-1-43

N.J. YARWOOD & SONS LTD
THE DOCK
NORTHAMPTON DATE: 8-9-43

SHIP NO. 726

DRG NO. 5645

DRAWN BY: CHECKED BY:
TRACED BY G.F. INDEXED BY:

DIMENSIONS:-
LENGTH B.P. 123'-6"
BREADTH M.P. 24'-6"
DEPTH M.P. 10'-8"

temper out off finally
suggest this method

Intermittent weld

slot weld

"C 625"

Vessel 726

STERNEFRAME

Kudder

as

appliance

"C. 625"

DS 393

© 2021

009222-009231-0212

Lloyd's Register
Foundation

009222-009231-0212



© 2021

Lloyd's Register
Foundation