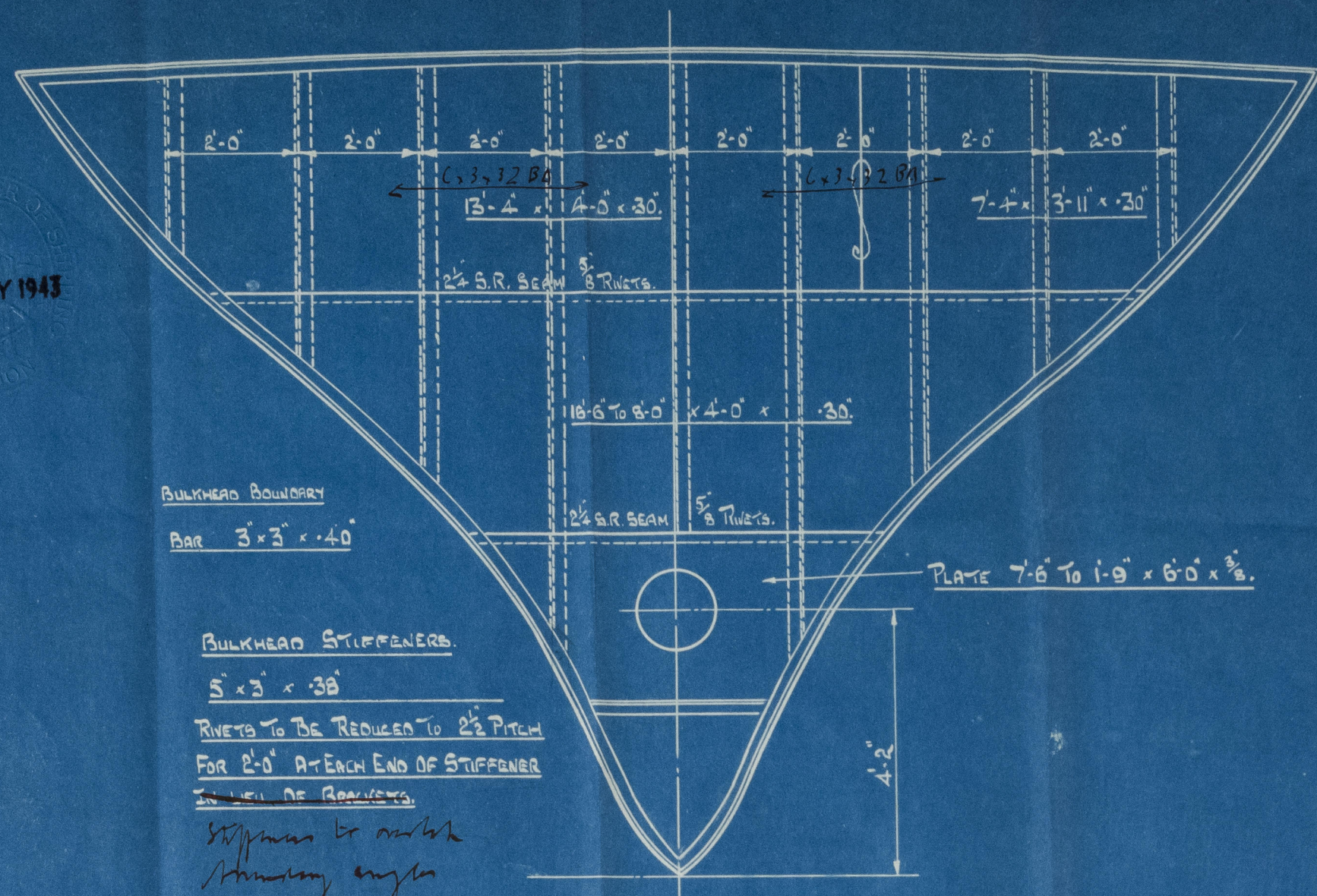
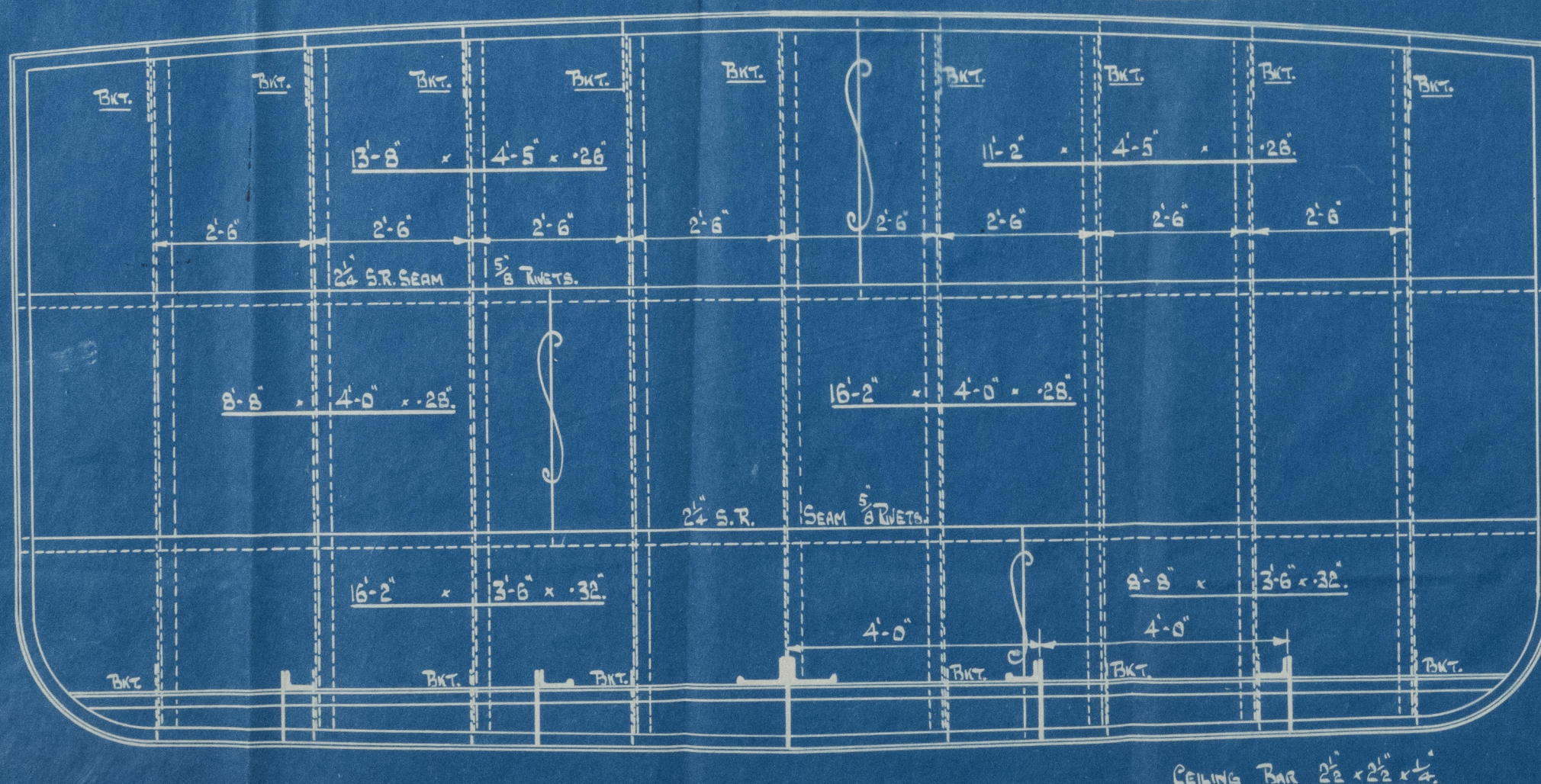


28 MAY 1943



W.T. BULKHEAD N° 4.
LOOKING AFT.

BULKHEAD STIFFENERS 6" x 3" x 38.
BRACKETED TOP & BOTTOM.
BRACKETS 15" x 15" x 34 TO TAKE 3-1/2" DIA RIVETS.



W.T. BULKHEAD N° 43.
LOOKING FORWARD

DIMENSIONS:
LLOYD'S RULE LENGTH 123.84 FEET.

LENGTH O.A. 133'-0".
LENGTH B.P. 123'-6".
BREADTH MLD 24'-6".
DEPTH MLD 10'-8".

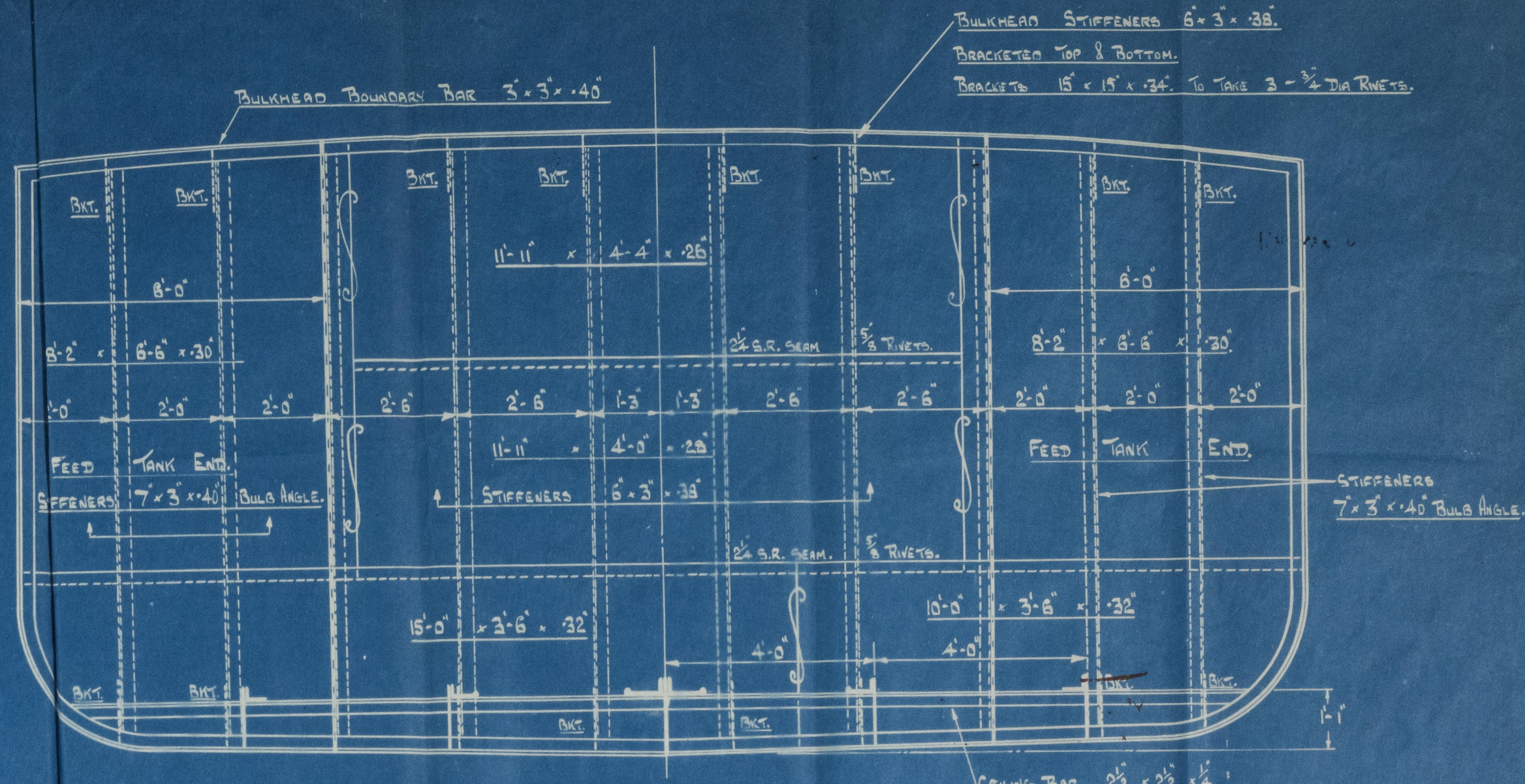
LLOYD'S NUMERALS:
 $L \times (B+D) = 4365$
 $L \times D = 1331$
 $d = 9.67$

BUTTS OF BULKHEAD PLATING TO BE WELDED.

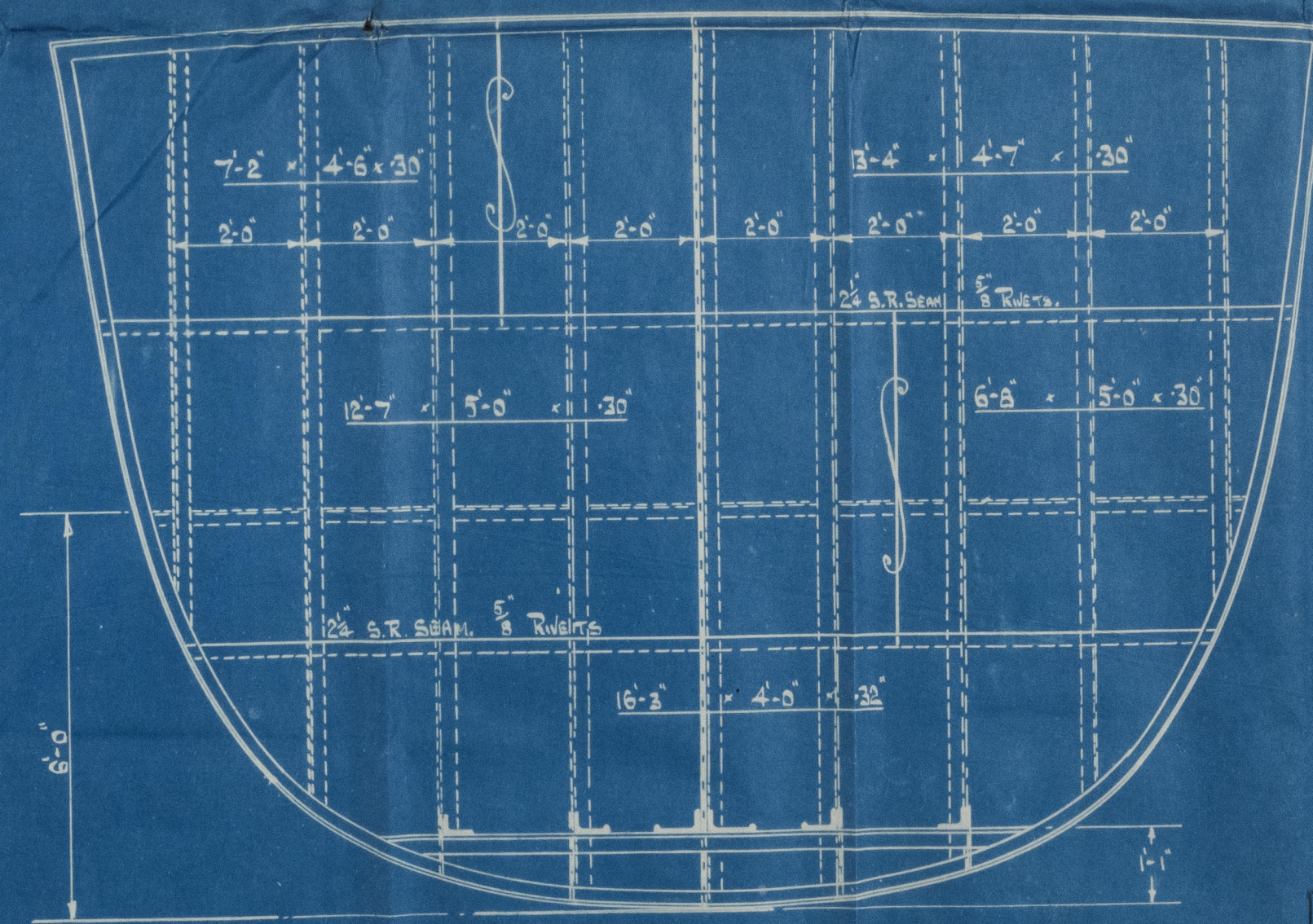
BULKHEADS FOR COASTING STEAMER "C.625"

TO LLOYD'S CLASS 100 A.1. (FOR LOADING AGROUND)

SCALE 1/2" = 1 FOOT.



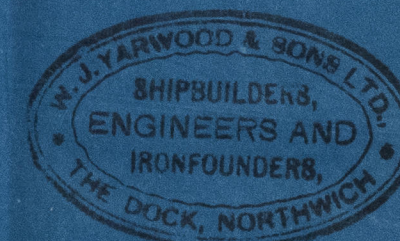
W.T. BULKHEAD N° 25.
LOOKING AFT.



CEILING BAR 2 1/2" x 2 1/2" x 4"

W.T. BULKHEAD N° 62
LOOKING FORWARD

BULKHEAD STIFFENERS 6" x 3" x 38.
RIVETS TO BE REDUCED TO 2 1/2" PITCH FOR 2'-0" AT EACH END OF STIFFENER IN LIEU OF BRACKETS.
STIFFENERS 7" x 3" x 40" BULB ANGLE.
BULKHEAD BOUNDARY BAR 3" x 3" x 40".

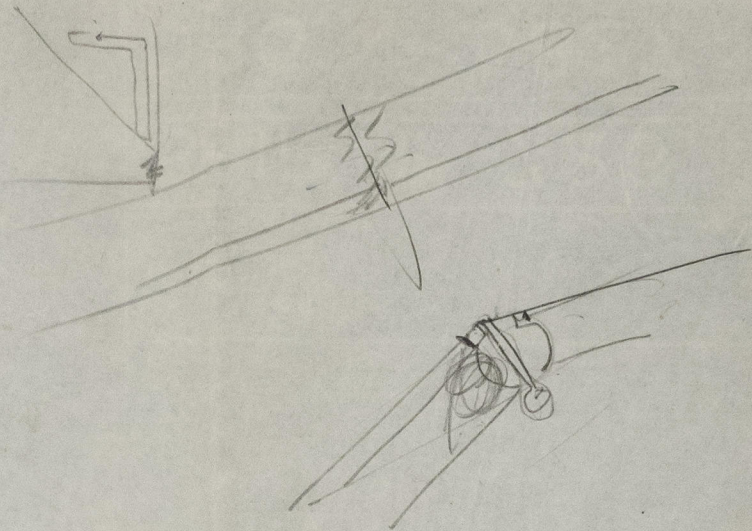


PRINT NO. 7211.
DATE 19 MAY 1943

W.J. YARWOOD & SONS LTD.
THE DOCK, NORTHWICH.
SHIP N° 726.
DRG. N° 5827.

DRAWN BY W.H.M. CHECKED BY J.H.
INDEXED BY J.H.

809222-009231-0211



Vessel 726
Bulkheads
as Appraised

"C. 625"