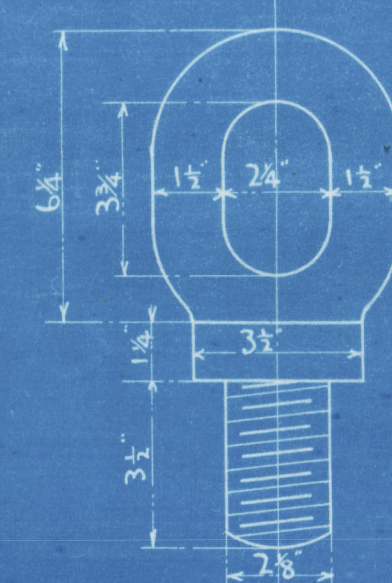


No 485.

STERN FRAME & RUDDER.

SCALE $\frac{1}{2}'' = 1'-0''$ PLAN No 7.

1 OFF

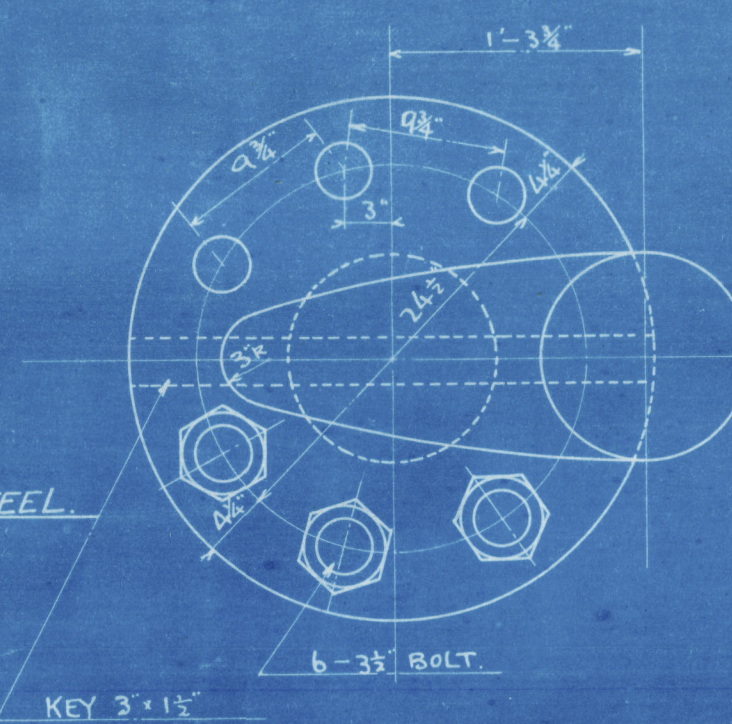


MATERIAL

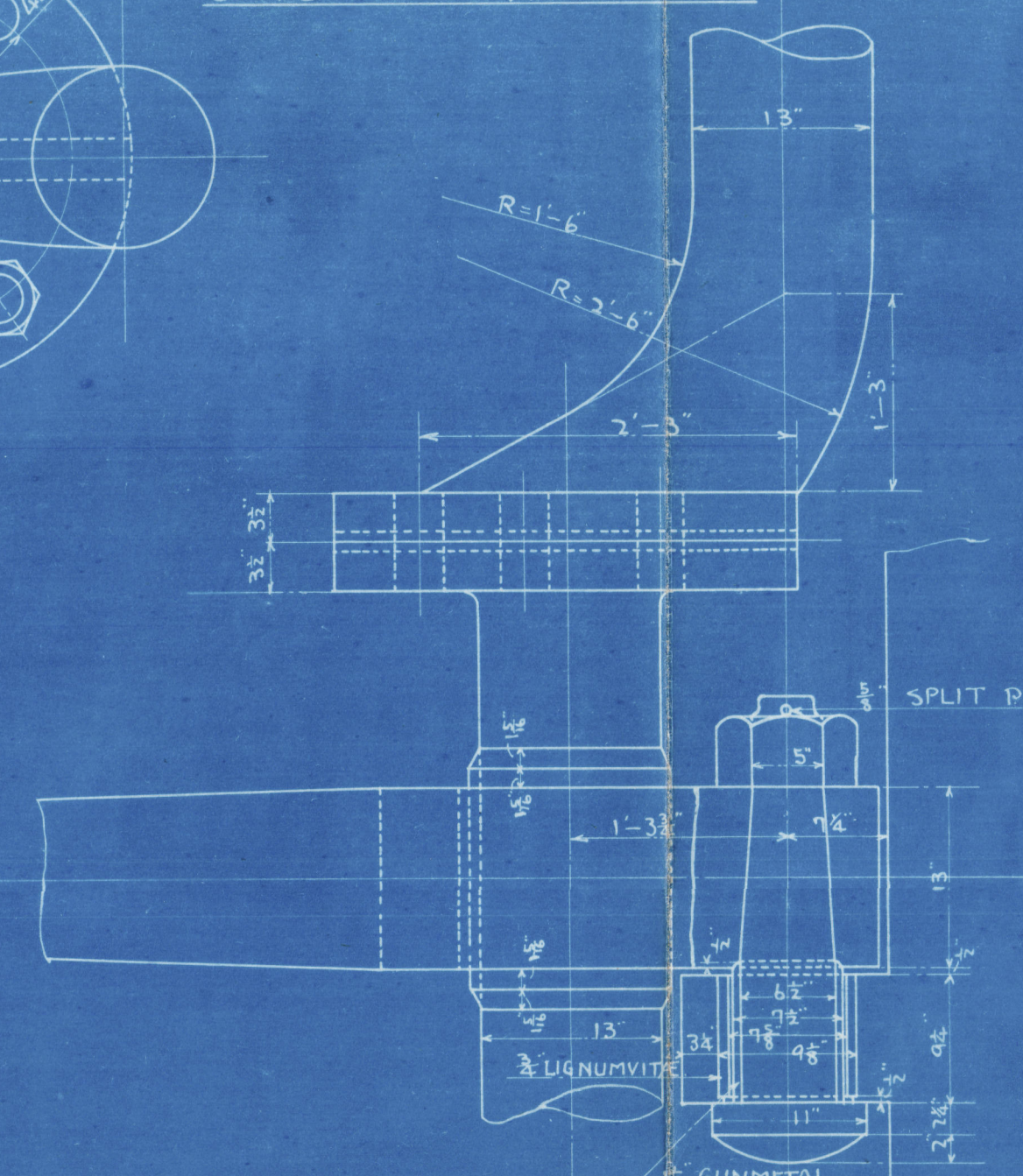
STERN FRAME CAST STEEL
RUDDER STOCK MAINPIECE ARMS & PINTLES FORGED STEEL

NUMERALS & SPEED

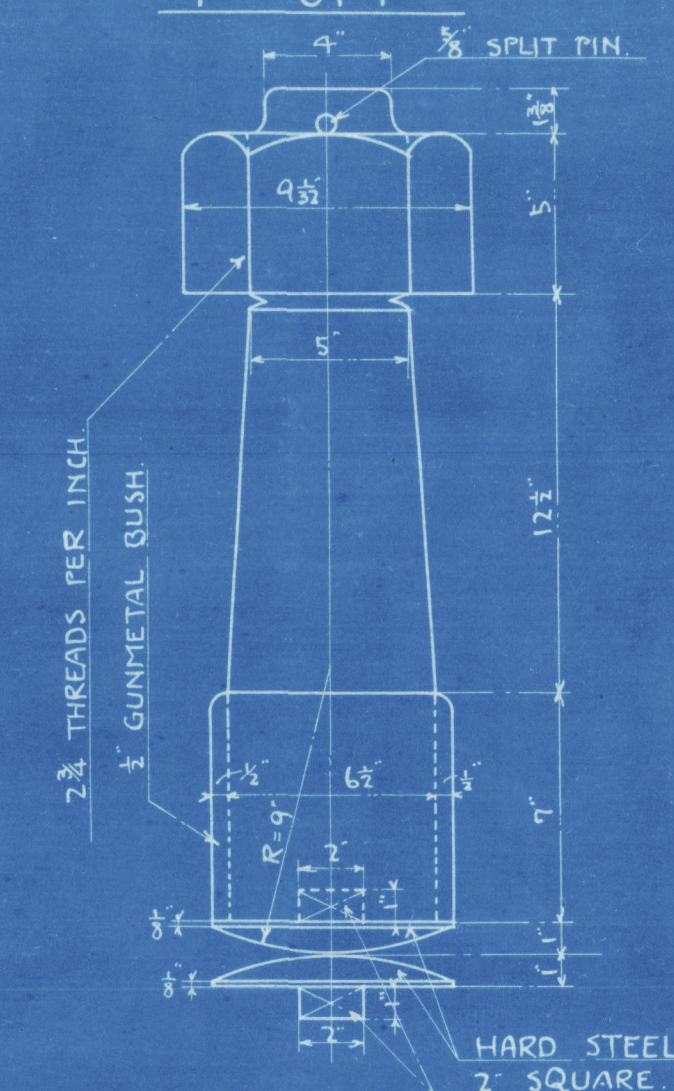
A. (UNDER NEATH COUPLING)	158.75 S
D.	5.5 FT
A x D	873.125
SPEED.	UNDER 14 KNOTS
DIA. OF RUDDER HEAD.	13"



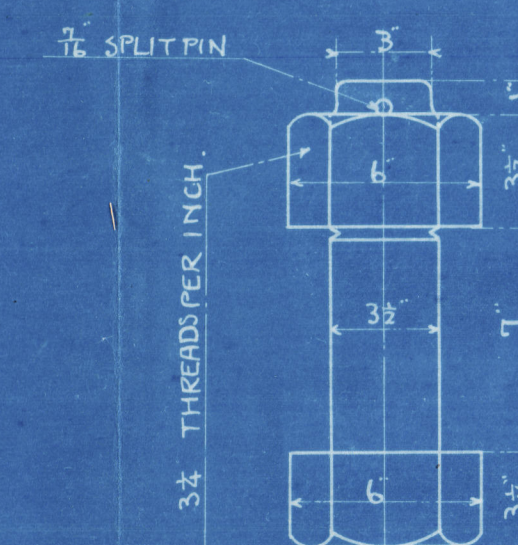
COUPLING & ARM 'A'



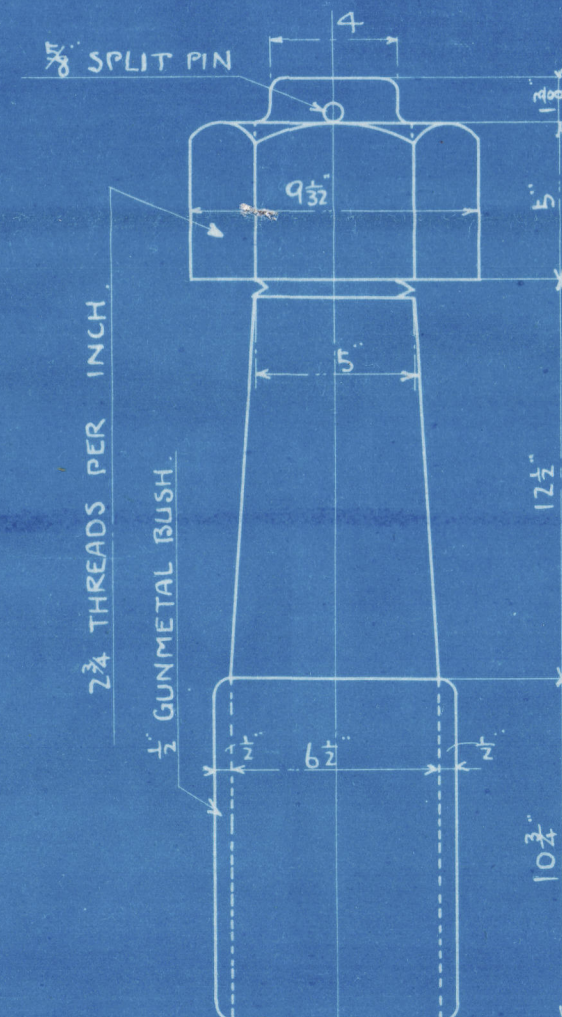
1 OFF



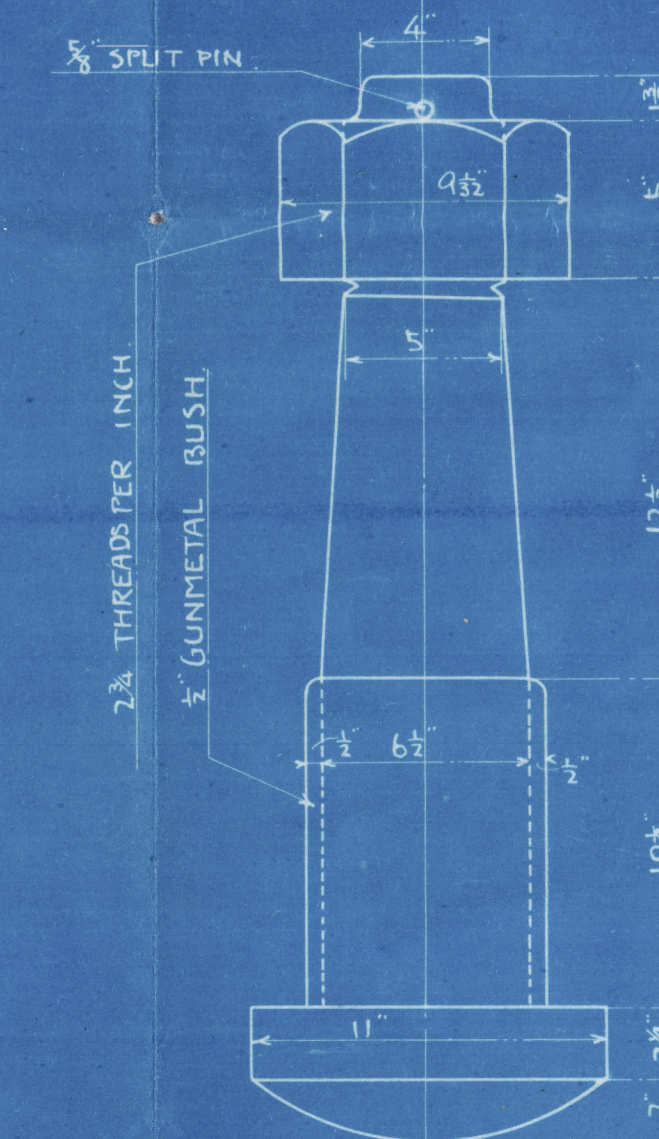
6 OFF



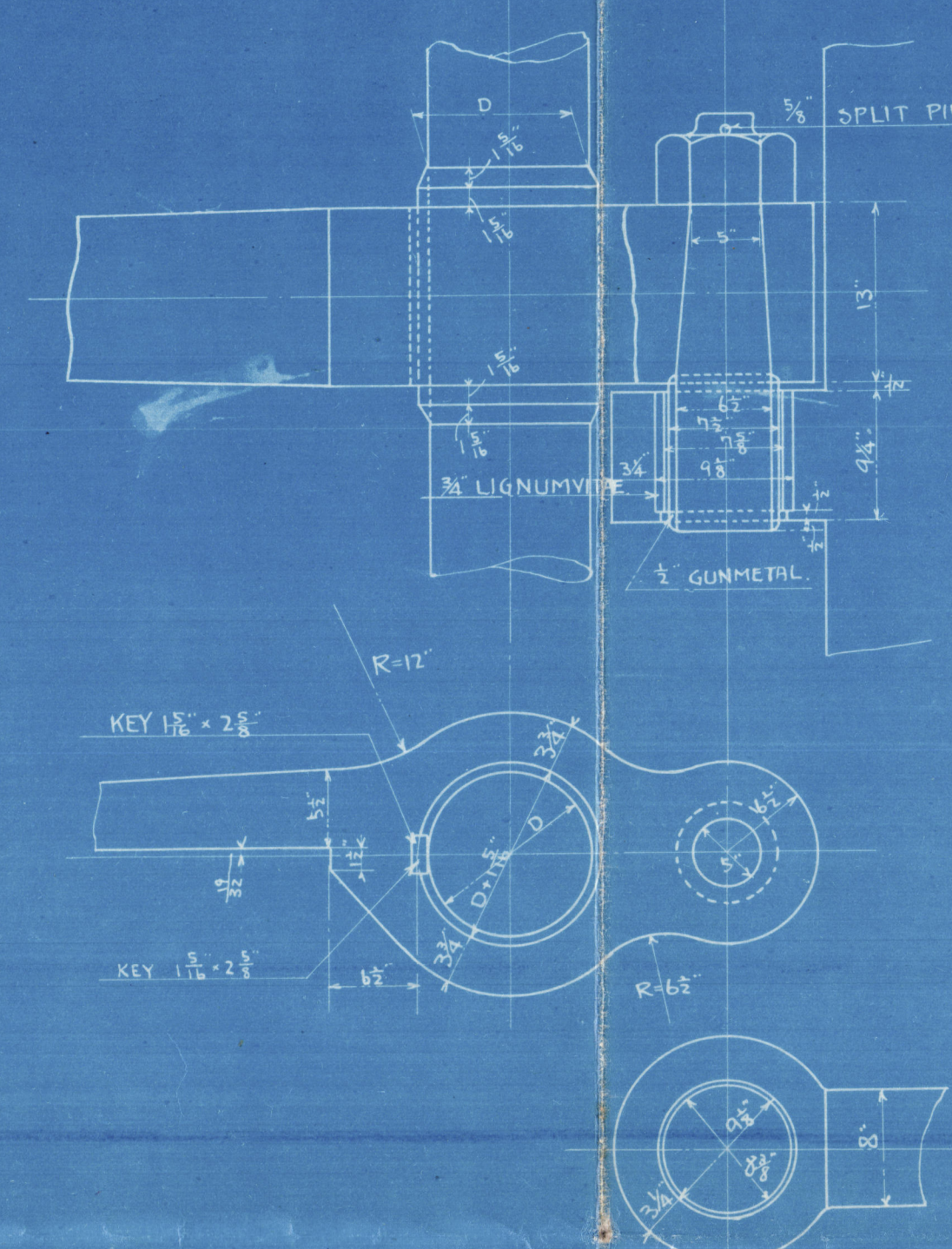
2 OFF



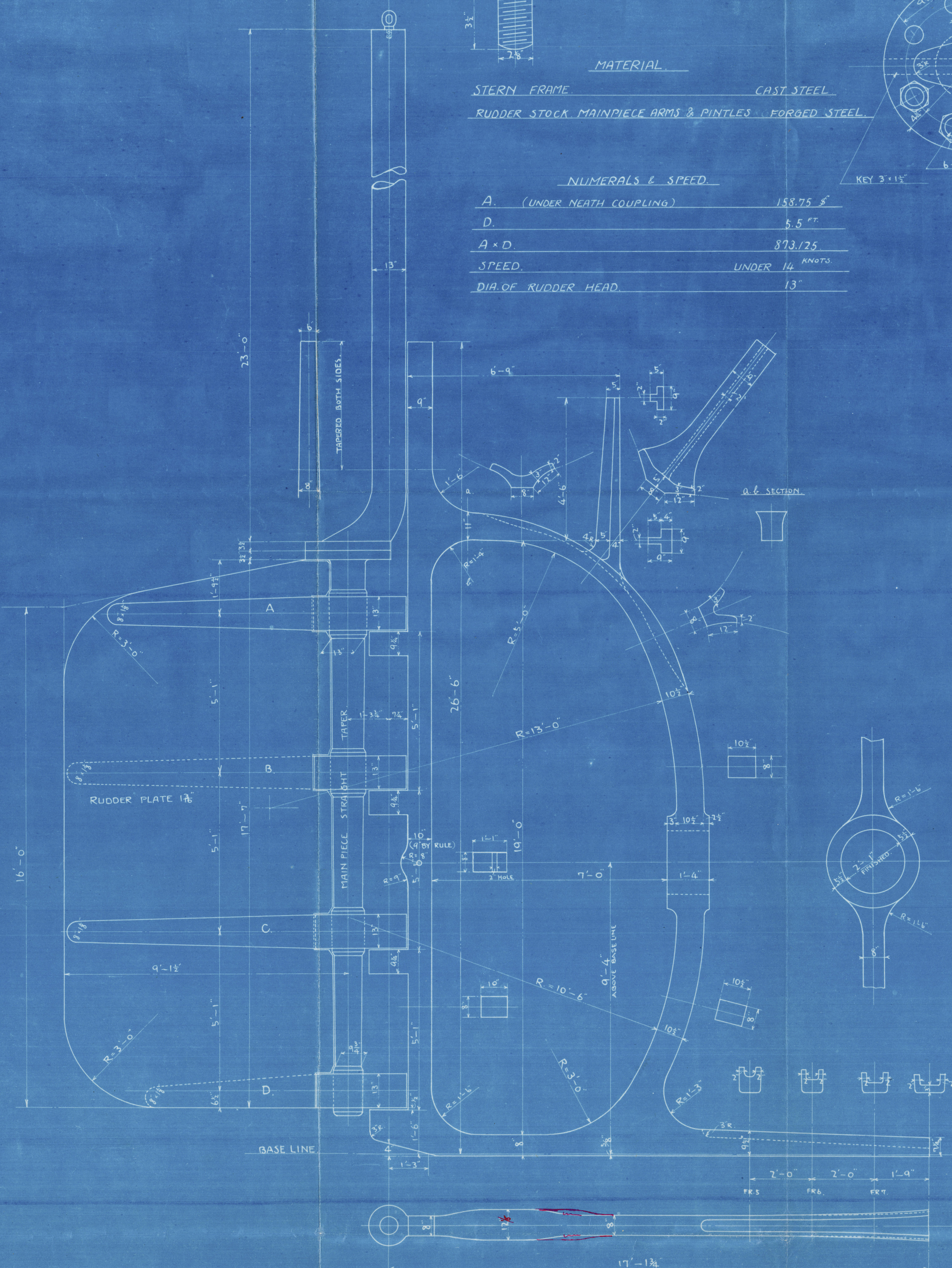
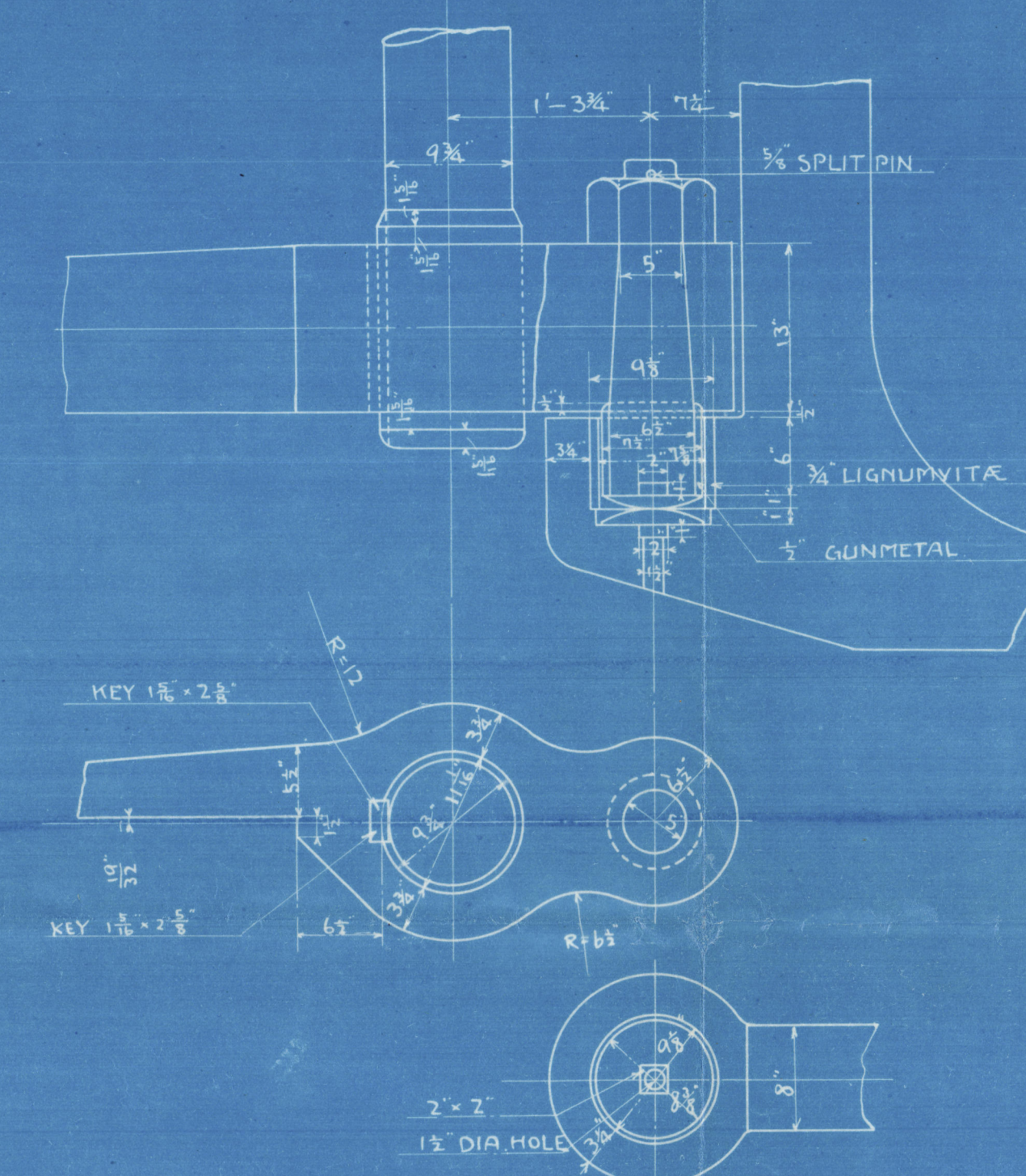
1 OFF



ARM 'B', 'C'



ARM D.



APPROVED
MAR 28 1905
KOBÉ

KAWASAKI DOCKYARD CO. LTD.
MAR 3 1905
KOBÉ JAPAN

© 2021
Lloyd's Register
Foundation

009182-009191-0277

SHIP NO. 485 MOTOR CARGO SHIP.

STERN FRAME AND RUDDER.

Hull Desgn. Dept.

Kawasaki Dockyd & Co.

DATE

~~for Box 578~~
"Cuba Maru"



© 2021

Lloyd's Register
Foundation

009182 - 009191 - 0277