

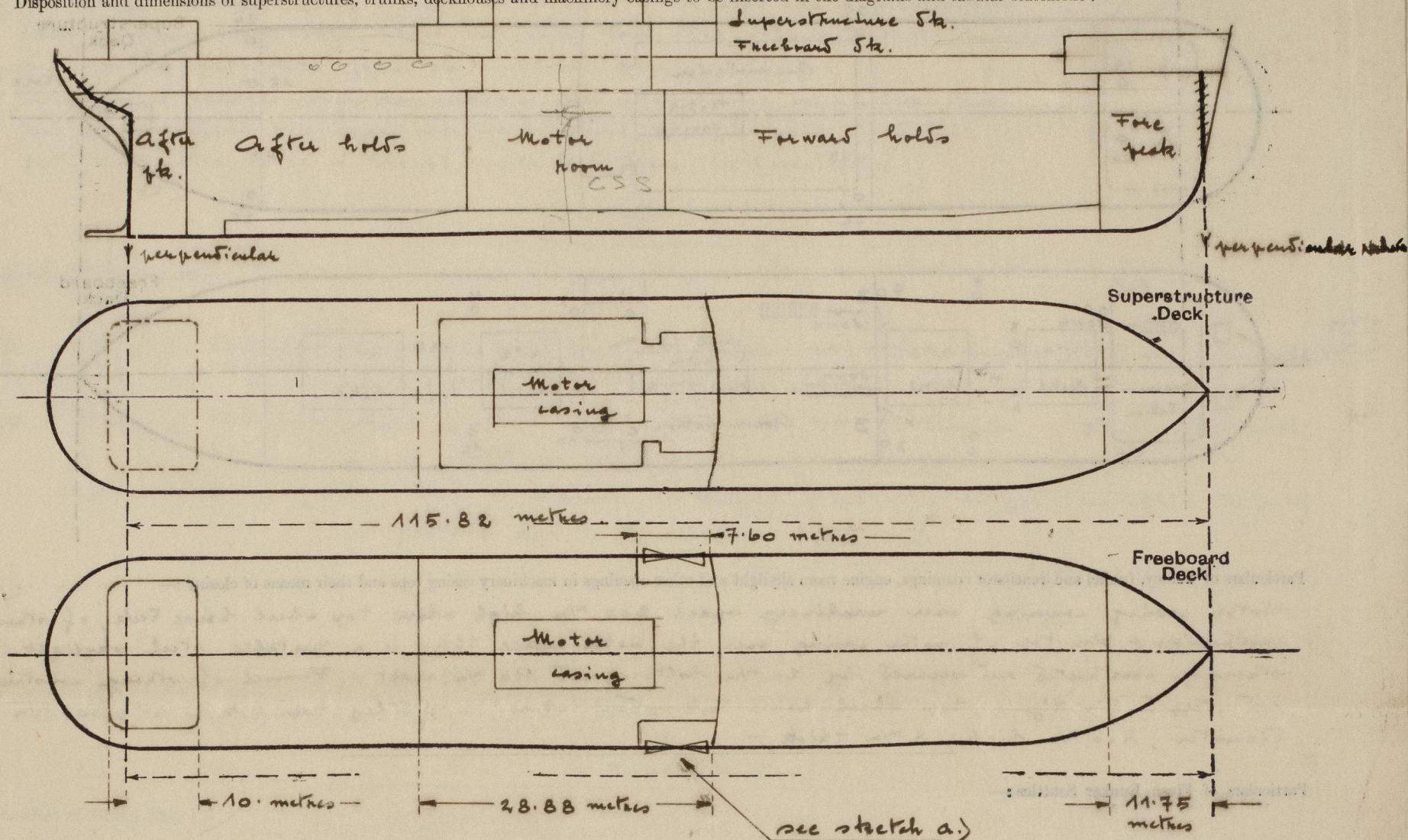
Lloyd's Register of Shipping.

SURVEYS FOR FREEBOARD.

(CONDITIONS OF ASSIGNMENT.)

Ship's Name **PORT SAID** Port of Survey **TRIESTE**
 Official Number **✓** Surveyor's Signature **D. Benson**
 Nationality and Port of Registry **Egyptian - Alexandria** Date of Survey **Spring fishing out**

Disposition and dimensions of superstructures, trunks, deckhouses and machinery casings to be inserted in the diagrams and tabular statement:—



Particulars of Superstructures, Trunks, Casings, Deckhouses.

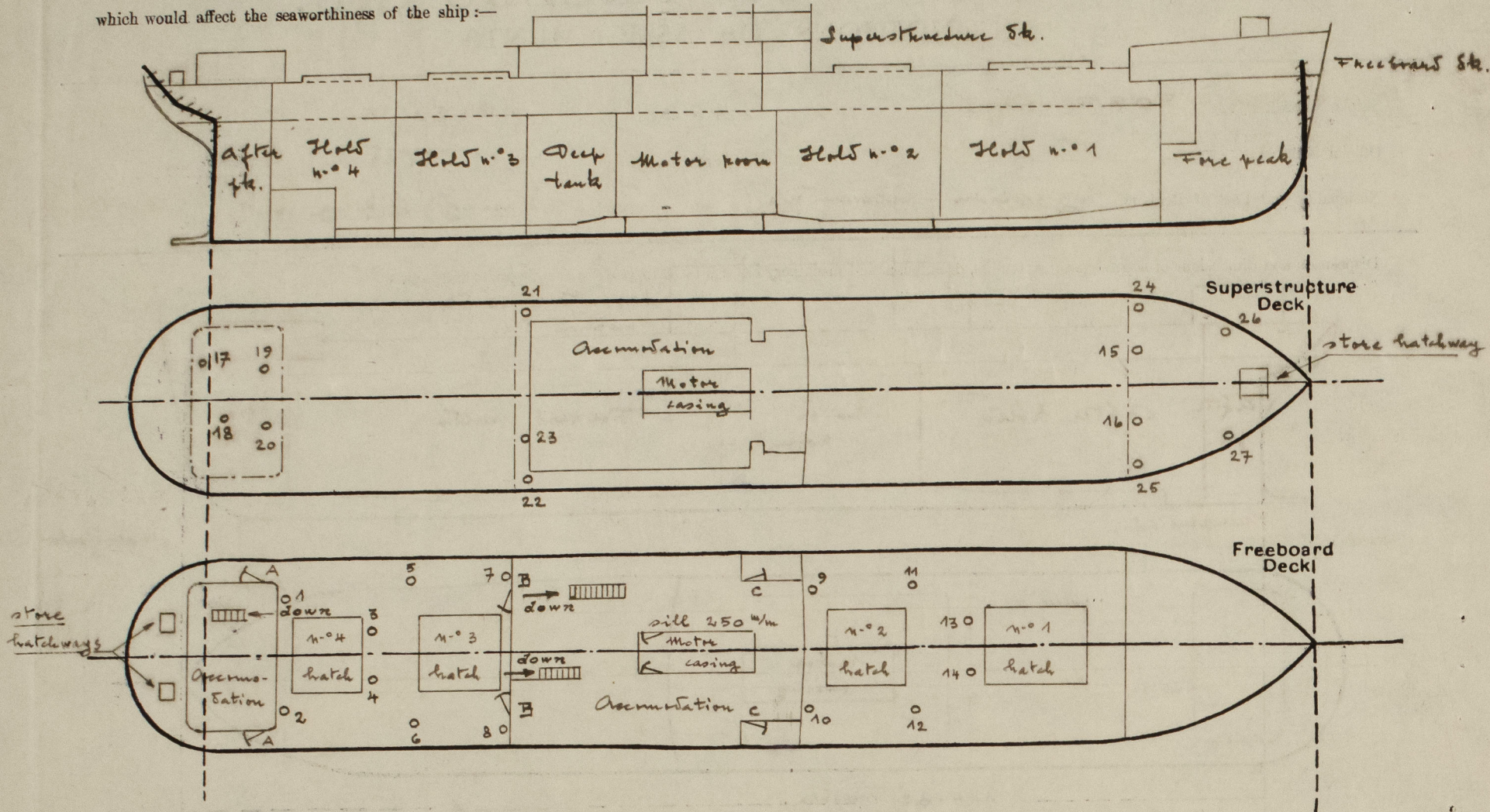
	Coaming m/m	Plating m/m	Stiffeners m/m	Spacing m/m	End Attachments of Stiffeners	Size of Openings m/m	Height of Sills m/m	Height of Casings m/m
Poop Bulkhead ...					none			
Raised Quarter Deck Bulkhead ...					none			
Bridge, After Bulkhead ...					none			
Bridge, Forward Bulkhead ...					none			
Forecastle Bulkhead ...	7.5 ✓	7.5 ✓	75 x 50 x 7	7.60	riveted to sills top and bottom	1 opening 1500 x 650	350 ✓	1900 ✓
Trunk, Aft ...					none			
Trunk, Forward ...					none			
Exposed Machinery Casings on Free- board or Raised Quarter Decks ...					not exposed			
Exposed Machinery Casings on Super- structure Decks ...					not exposed			
Machinery Casings within Superstruc- tures not fitted with Class I Closing Appliances ...					none			
Deckhouses on Flush Deck Ships ...					none			
Forecastle Bulkhead ...	7.5	7.5	80 x 60 x 7	7.16	riveted to sills top & bottom	2 openings 1680 x 680	380	2500
Deckhouses on Flush Deck Ships ...	7.5	7.5	200 x 90 x 10	7.16	sills	2 openings 1600 x 700	460	2500

Particulars of Closing Appliances (state if capable of being manipulated from both sides).

Poop Bulkhead ...	none
Raised Quarter Deck Bulkhead ...	none
Bridge, After Bulkhead ...	Hinged wood doors (B)
Bridge, Forward Bulkhead ...	Hinged steel doors on the house sides (C)
Forecastle Bulkhead ...	1 steel w.t. door hinged secured with clips capable of being operated from both side.
Exposed Machinery Casings on Free- board or Raised Quarter Decks ...	not exposed
Exposed Machinery Casings on Super- structure Decks ...	not exposed
Machinery Casings within Superstruc- tures not fitted with Class I Closing Appliances ...	not exposed
Deckhouses on Flush Deck Ships ...	see sketch

PARTICULARS OF PROTECTION TO OPENINGS, ETC.

The following diagrams should be used to indicate the positions of cargo and coaling hatchways, gangway, cargo and coaling ports, ventilators, companionways, etc., which would affect the seaworthiness of the ship :—



Particulars of fiddle, funnel and ventilator coamings, engine room skylight and other openings in machinery casing tops and their means of closing :—

Motor casing cranning over machinery space 200 ft/m high above top wheel house bulk, of strong construction - On top of motor casing, over the motor space there is a portable steel skylight strongly constructed and secured by 20 ft/m belts spaced 110 ft/m apart - Funnel of strong construction and stepped directly on top wheel house bulk - Ventilators on fibreglass top : 4 in m²; 600 ft/m diameter; 400 ft/m high; 8 ft/m thick -

Particulars of Flush Bunker Scuttles:—

none ✓

Particulars of Companionways:— Entrance to crew quarter inside after house in shelter back (steel enclosed) with 2 access doors in wood strongly constructed, operating from both sides; size: 1800 x 600 mm and a sill of 450 mm, as shown in above sketch, marked "A"—
Entrance to accommodation in centre house in shelter back (steel enclosed) with 2 access doors in steel, hinged, secured & operated from both sides; size: 1800 x 700 mm and sills of 250 mm as shown in sketch "C"—
Entrance to accommodation in centre house in shelter back (steel enclosed) with 2 access doors in a after bulkhead in wood, strongly constructed, operated from both sides; size: 1680 x 1080 mm; sills: 450 mm as shown in sketch, marked "B"—
Particulars of Ventilators in exposed positions on freeboard and superstructure decks:— above sketch, marked "B" —

n ^o	position	diam. %	height %	thick %	leading to	n ^o	position	diam. %	height %	thick %	leading to
1	shelter str	480	1300	10	hols & tw str n ^o 4	15	fic'le	480	1300	10	hols & tw str n ^o 1
2	"	"	"	"	"	16	"	"	"	"	"
3	"	480	2850	10	"	17	near house str	234	760	8	steering gear n.
4	"	"	"	"	"	18	"	"	"	"	tw str. accom.
5	"	480	1300	10	" n ^o 3	19	"	rectan- gular	"	"	"
6	"	"	"	"	"	20	"	"	"	"	"
7	"	480	1300	10	"	21	centre house str	200/ 80	"	"	shelter str accom.
8	"	"	"	"	"	22	"	"	"	"	"
9	"	480	7800	12	hols n ^o 2	23	"	260	"	"	"
10	"	"	"	"	"	24	fic'le	rectan- gular	"	"	fic'le store
11	"	480	1300	10	hols & tw str n ^o 2	25	"	"	"	"	"
12	"	"	"	"	"	26	"	200/ 80	"	"	"
13	"	480	2850	10	" n ^o 1	27	"	"	"	"	"
14	"	"	"	"	"	all ventilators in exposed position with height over 910 %					

Particulars of Air Pipes in exposed positions on freeboard, raised quarter, or superstructure decks:—

No.	Particulars	Remarks
1	Stungly detached and steel hinged covers fitted to all ventilators—	

	position	diam. ft	height ft	type
1	off in file str. to forward tank	80	600✓	goose neck with cover;
2	" " shelter " " n° 1 S. b. tanks	100	530✓	" " " " " & double gauge;
2	" " " " " n° 2 " "	100	530✓	" " " " " " " ;
2	" " " " " n° 3 " "	100	520✓	" " " " " " " ;
2	" " " " " n° 4 " "	80	520✓	" " " " " " ;
2	" " " " " n° 5 " "	60	520✓	" " " " " " ;
2	" " " " " dry tank	50	460✓	" " " " " " ;

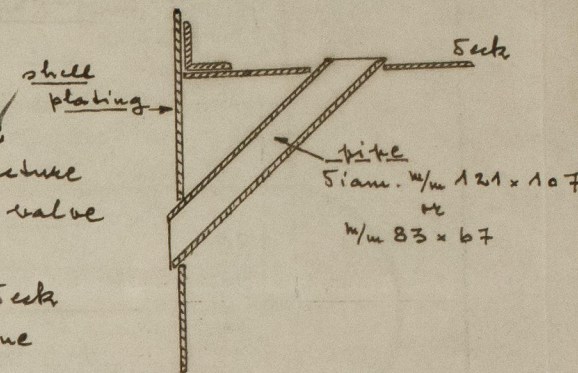
please see continuation on other page of this Rpt.

Particulars of Gangway Cargo and Coaling Ports:—

none

Particulars of Scuppers and Sanitary Discharge Pipes :—

- 2 suppers from fore deck discharge overboard as per sketch: ✓
- 13 " " shelter " " " " " " ✓
- 2 " " " " (in accom.) " " " " " " ✓
- 10 " " twendeck " into bilges with liquid seal trap, ^{shell} plan
- 15 sanitary discharges from accommodation in shelter deck and superstructure
deck discharge overboard above minimum load line with automatic valve
in bronze controlled from an accessible position; ✓
- 3 sanitary discharges from accommodation in poop house in shelter deck
and on twendeck discharge overboard above the maximum load line
with automatic valve in bronze controlled from the twendeck ✓



Particulars of Side Scuttles:—

- 5 scuttles in tween deck (below foreboard deck): amidship: 250 $\frac{1}{4}$ " in bronze fitted with hinged sea-light; 3 in "°, on port side and 7 on starboard side ✓
- 5 scuttles in tween deck (below foreboard deck): stern side: 250 $\frac{1}{4}$ " diameter in bronze fitted with hinged sea-light: 6 in "°, on starboard side and 7 on port side; ✓
- 5 scuttles in main deck: 250 $\frac{1}{4}$ " diameter in bronze fitted with hinged sea-light: 2 in "°, on port side and 2 on starboard side - ✓

Vertical distance of Sill of lowest Side Scuttle above top of keel

9100 m/m ✓

Particulars of Guard Rails :—

Quart rails on f/cle : 1142 mm high - 4 rods - stations spaced 1150 mm;
Bulwarks on shelter side : 1100 mm high - strongly constructed with plates 7 mm thick,
bulb angle bar on top (180 x 90 x 9 mm) and stays spaced 1500 mm apart.

Particulars of Gangways, Lifelines, etc. :—

none

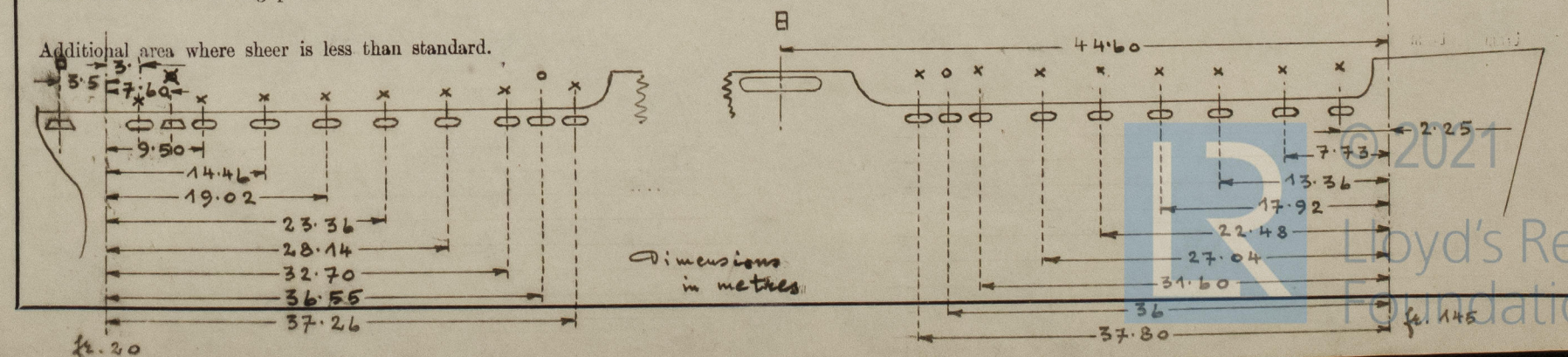
Particulars of Freeing Arrangements.

	Length of Bulwark	Height of Bulwark	Size of Freeing Ports	Number each side	Area each side	Rule area each side
			$\frac{w}{m}$		$\frac{w}{m}$	
		$\frac{m}{m}$	x	8	2.77	} 2.27 m ³
			o	1	0.06	
After Well ...	43 122.24'	1100	x	1	0.25	
			o	1	0.72	
			x	8	2.77	} 2.53 m ³
			o	1	0.06	
Forward Well ...	405 136.26'	1100	x	1	4.37	
			o	1		

State position of each freeing port { After Well:— } see sketch below:
(F. and A. position and height above deck edge) { Forward Well:— 350 $\frac{1}{2}$ in } on 32

State whether the freeing ports are fitted with shutters, bars, or rails, and give particulars of such :—

Additional area where sheer is less than standard.



PARTICULARS OF PROTECTION TO OPENINGS, ETC.

HATCHWAYS ON FREEBOARD AND SUPERSTRUCTURE DECKS.									
Description of Hatchway		1	2	3	4	Hatch to store on fore/cle	Hatches to steering gear room on shelter side	Hatches to gear room on shelter side	
Dimensions of Hatchway		9500 x 5500	15960 x 5500	8360 x 5500	8360 x 5500	600 x 600	600 x 600	600 x 600	
COAMINGS	Height above Deck	900	900	900	900	300	300	300	
	Thickness	11	11	11	11	8	8	8	
	Sides	11	11	11	11	8	8	8	
	Stiffeners	180 x 90 x 10	180 x 90 x 10	180 x 90 x 10	180 x 90 x 10	mil	mil	mil	
Brackets, Stays		3	5	2	2	mil	mil	mil	
HATCH BEAMS	Number	5	8	4	4				
	Spacing	1598	1773	1672	1672				
	Scantling and Sketch								
Bearing Surface		80	80	80	80				
FORE AND AFTERS	Number								
	Spacing								
	Unsupported Lengths								
	Scantling* and Sketch								
Bearing Surface									
HATCH COVERS	Material	white p.	white p.	white p.	white p.	steel	steel	steel	
	Thickness	65	65	65	65	8	8	8	
	How fitted	fore and aft	aft	fore and aft	aft	hinges w. t. hemp packing & wing	hinges w. t. hemp packing & wing	hinges w. t. hemp packing & wing	
	Bearing Surface	95	95	95	95	mil	mil	mil	
Spacing of Cleats		575	575	575	575	mil	mil	mil	
Number of Tarpaulins		2	2	2	2	mil	mil	mil	

*Are wood fore and afters steel shod at all bearing surfaces? none

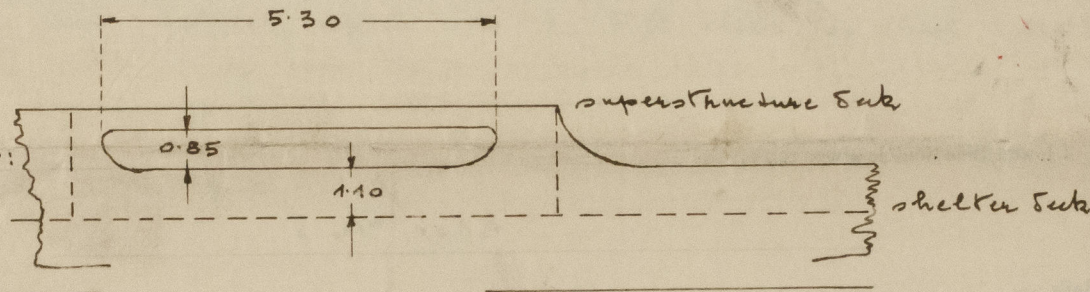
Are battens and wedges efficient and in good condition? yes

Are tarpaulins in good condition and in accordance with rule requirements? yes

Are lashings provided in accordance with rule requirements? yes

Particulars of any special features:—

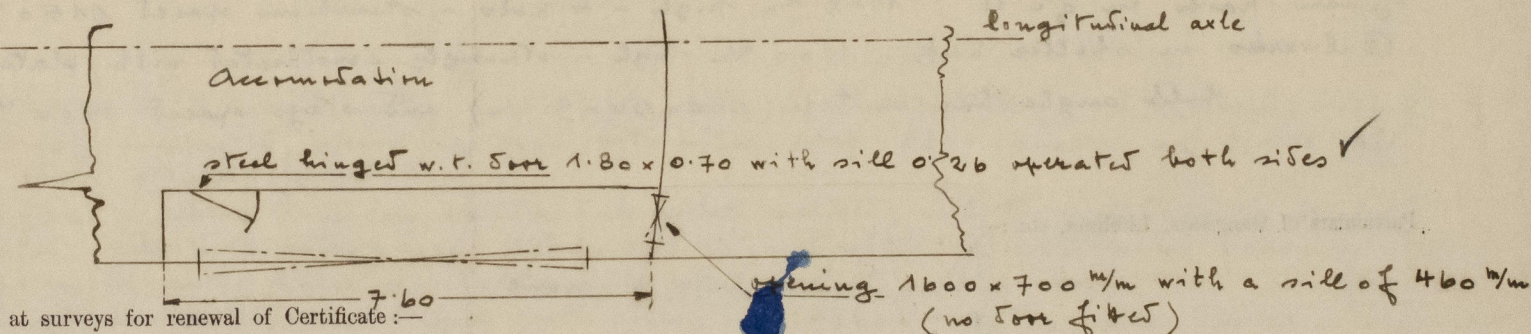
Longitudinal outside view:



Sketch a.

Dimensions in metres:

View from above:
shelter deck:



Endorsement at first survey and at surveys for renewal of Certificate:—

The fittings and appliances are in accordance with the particulars shown on this form (or as now modified) and are in good condition.

Cont. of "Particulars of Air pipes in exposed position on freeboard deck or superstructure deck"

	position	Diam. mm	height mm	type
1	off on shelter deck to n° 6/1 S.B. tank	50	460	gross neck with cover & double gauze;
1	" " " " " n° 6/2 " "	50	460	" " " " ;
1	" " " " " n° 6 " "	50	460	" " " " ;
2	" " " " " n° 7 " tanks	100	800	" " " " & double gauze;
2	" " " " " S.B. tanks	150	660	" " " " " " ;
2	" " " " " n° 8 S.B. tanks	100	750	" " " " " " ;
2	" " " " " n° 9 " "	100	520	" " " " " " ;
1	" " " " " after peak	60	760	" " " " ;

All air pipes are of strong construction:—