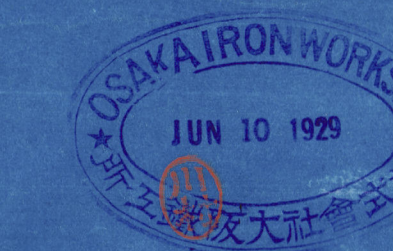


SHIP N<sup>o</sup> 1128

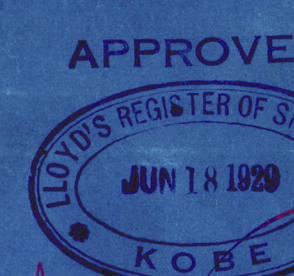
## RUDDER

SCALE  $\frac{1}{8}" = 1'$  A-5

MATERIALS  
 RUDDER HEAD & MAIN PIECE --- FORGED STEEL  
 RUDDER ARMS --- CAST STEEL

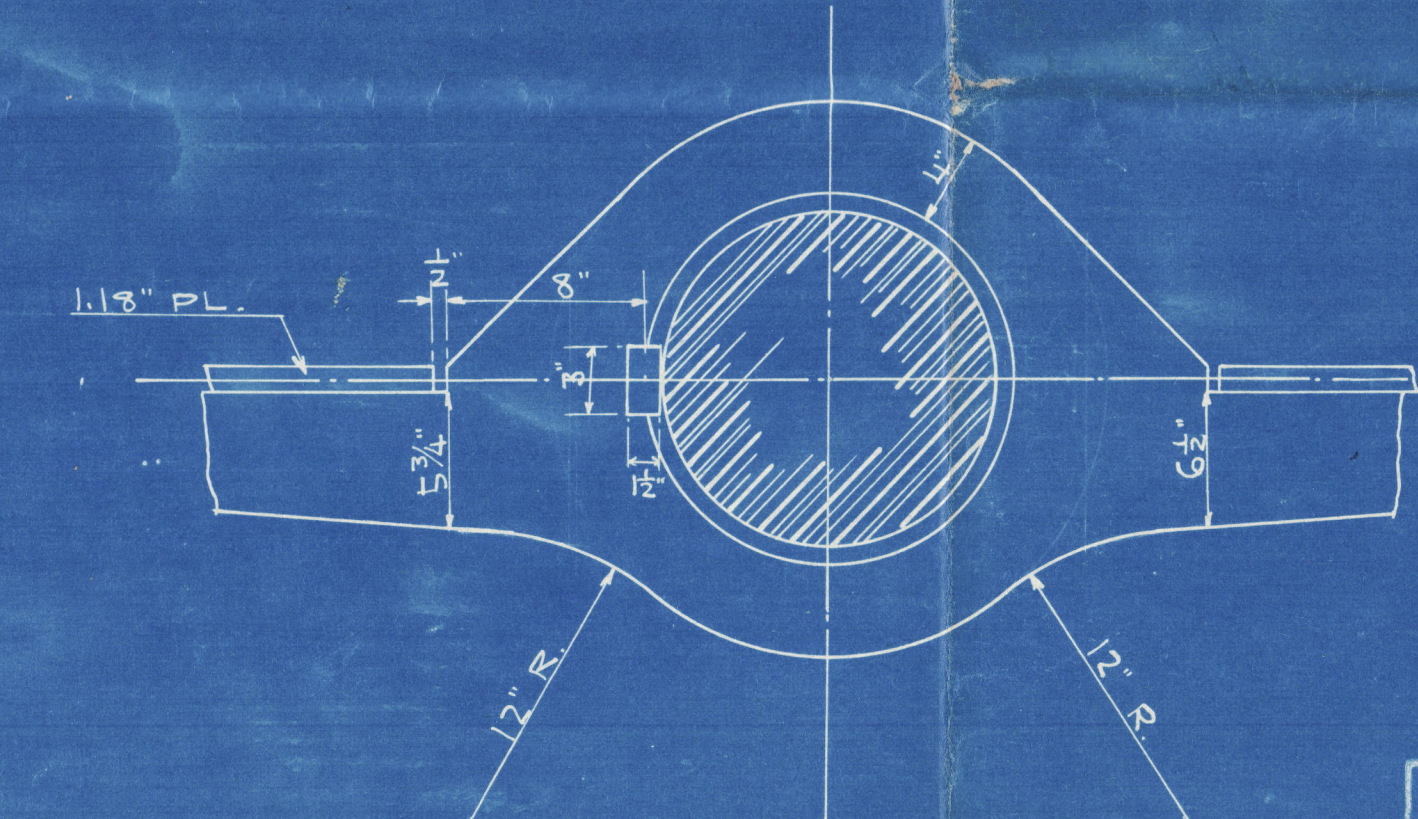
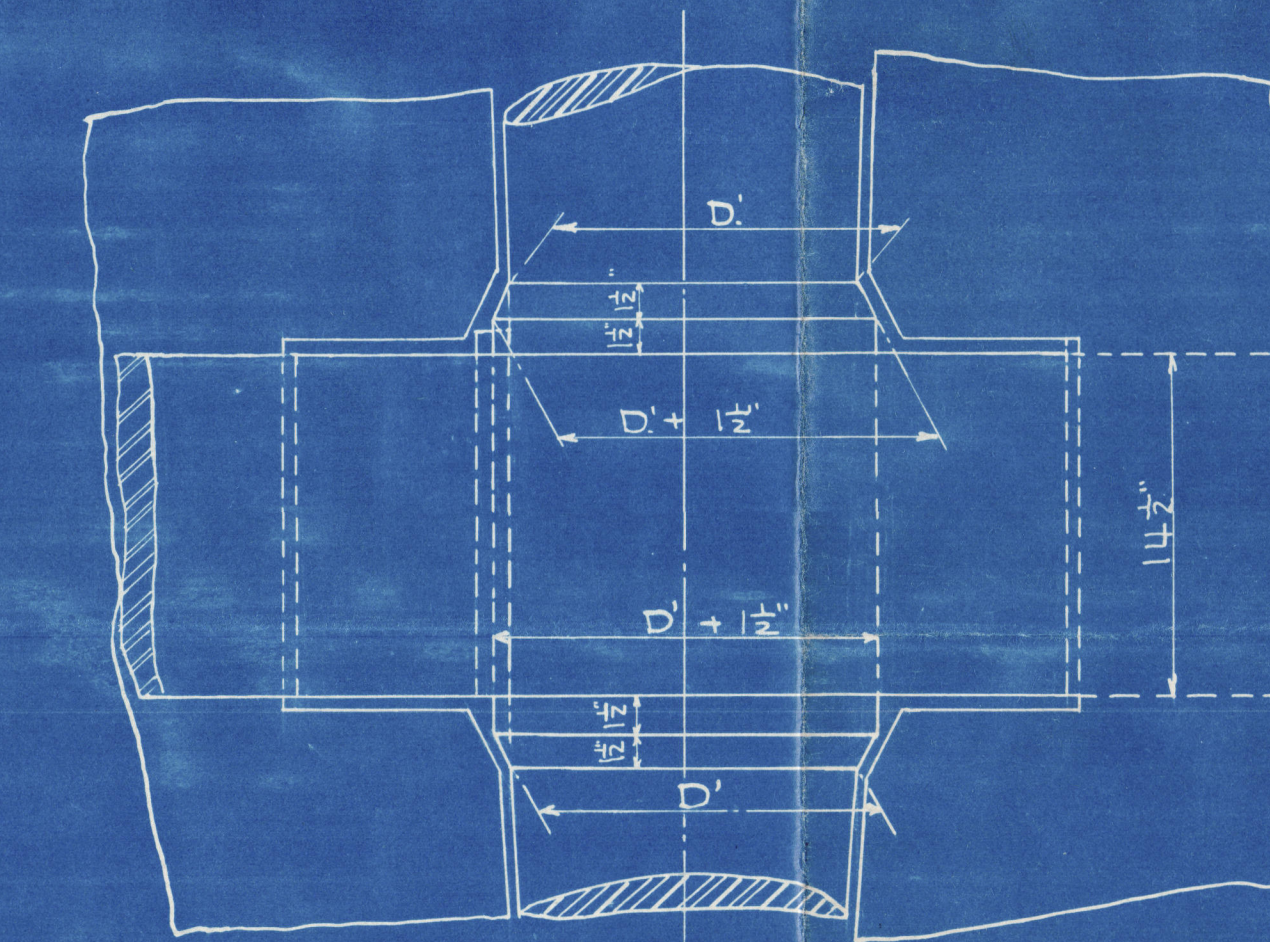
WEIGHTS	
RUDDER HEAD	(E.S.) 5.25 TONS
MAIN PIECE	(E.S.) 11.10 "
KEYS	(E.S.) .06 "
PINTLES & NUTS	(E.S.) .85 "
COUPLING BOLTS & NUTS	(E.S.) .50 "
RUDDER ARMS	(E.S.) 7.90 "
BUSH & LINER	(G.M.) .17 "
TOTAL	25.83 "

*Forgings & Castings to be tested  
in accordance with the Rules.*

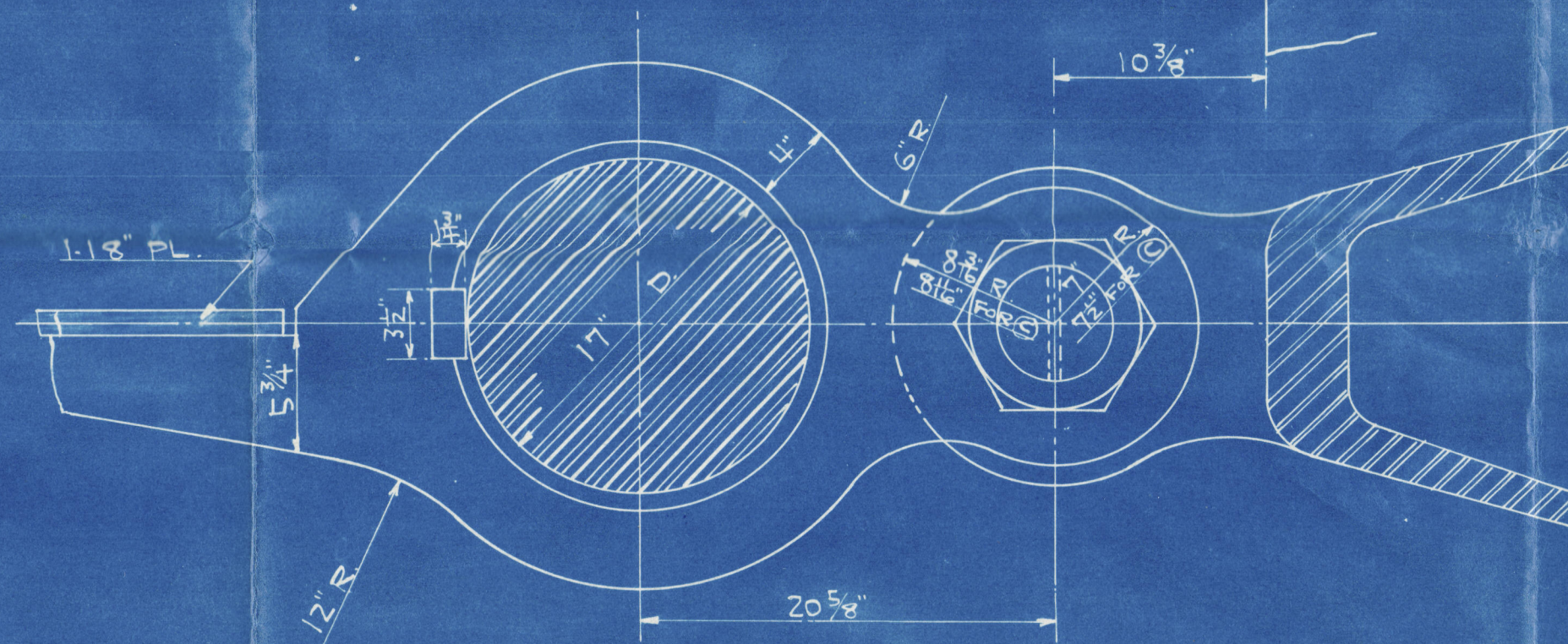
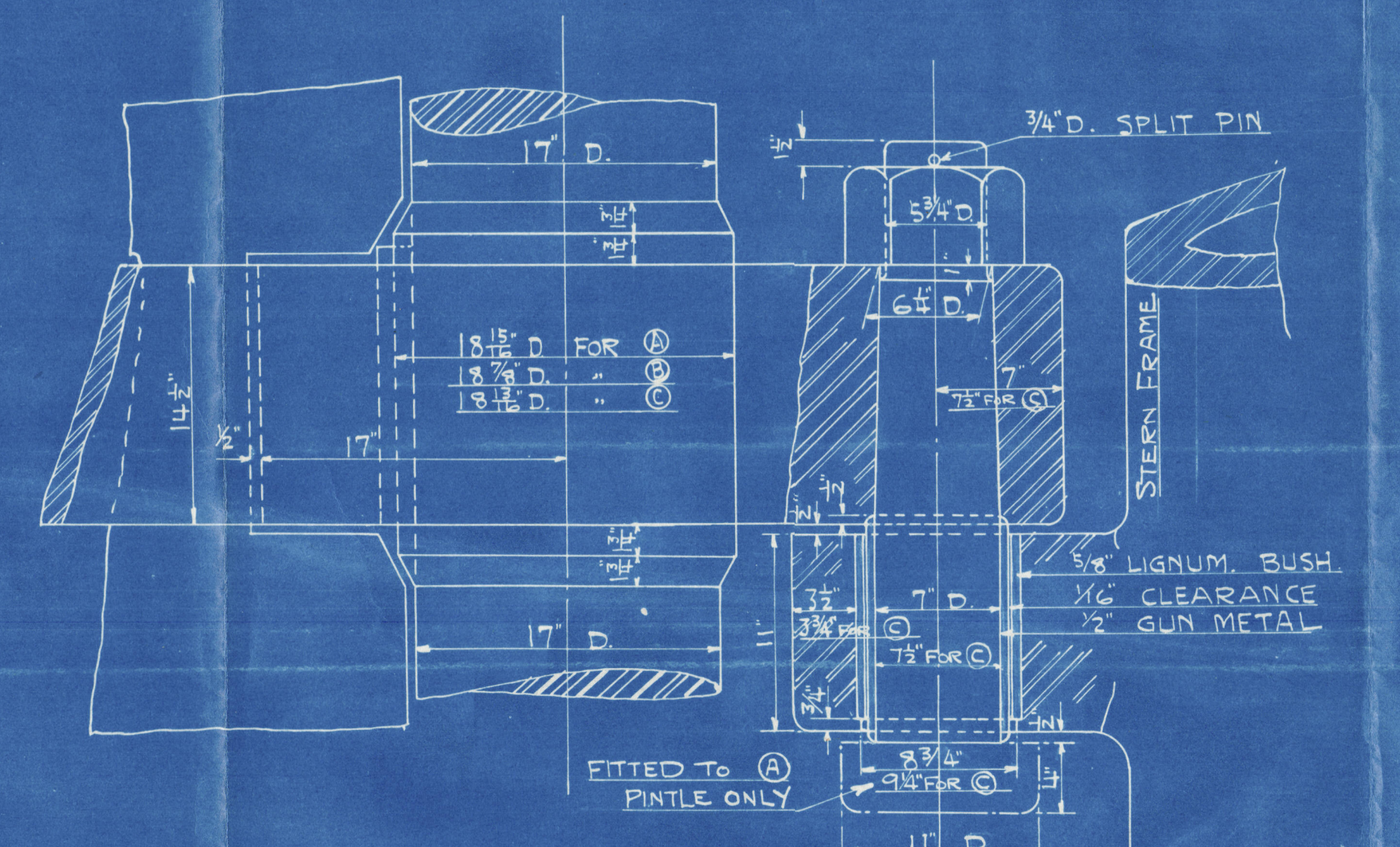


*In Mr. Barker  
for Lloyd's*

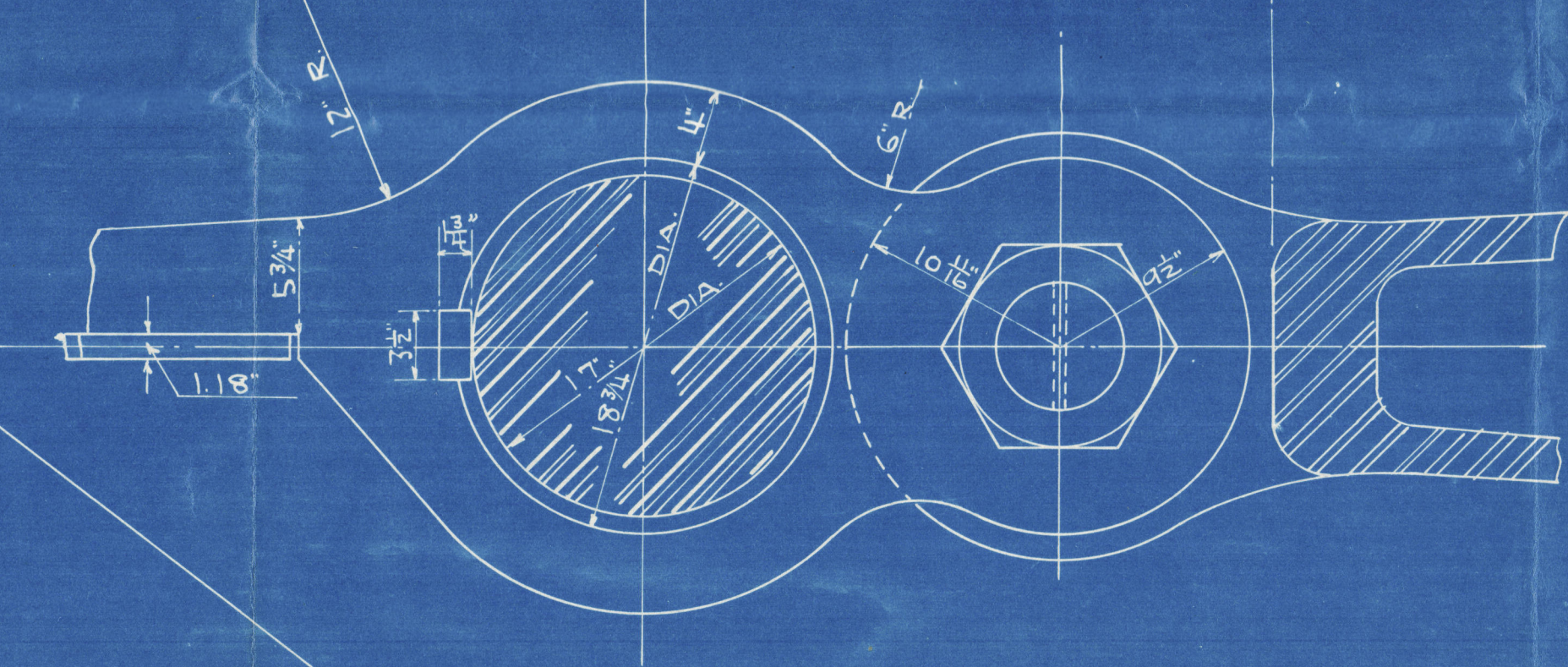
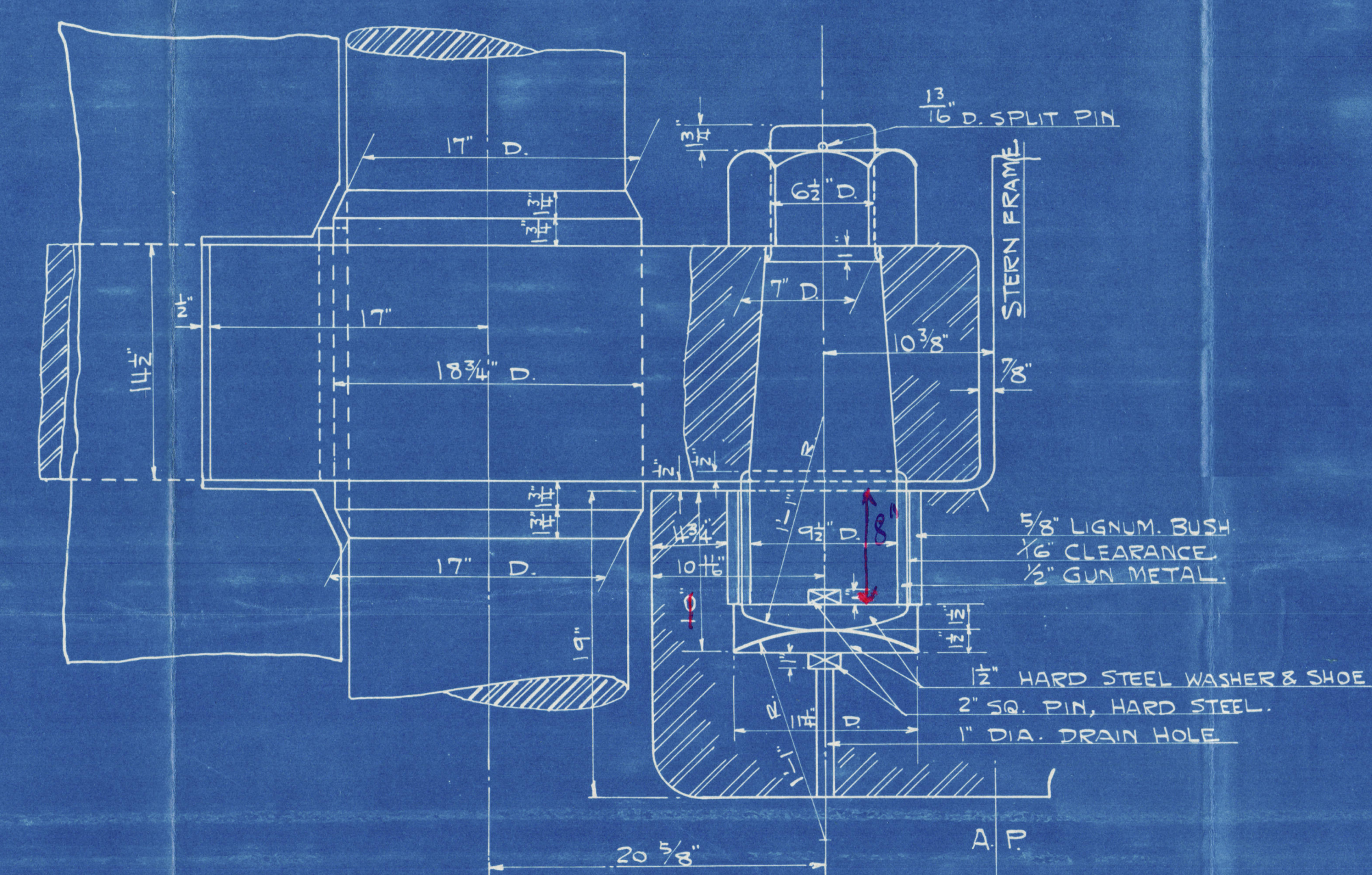
DETAIL OF ARM (E)  
 SCALE  $\frac{1}{8}" = 1'$



DETAIL OF PINTLE & GUDGEON (A) (B) & (C)  
 SCALE  $\frac{1}{8}" = 1'$

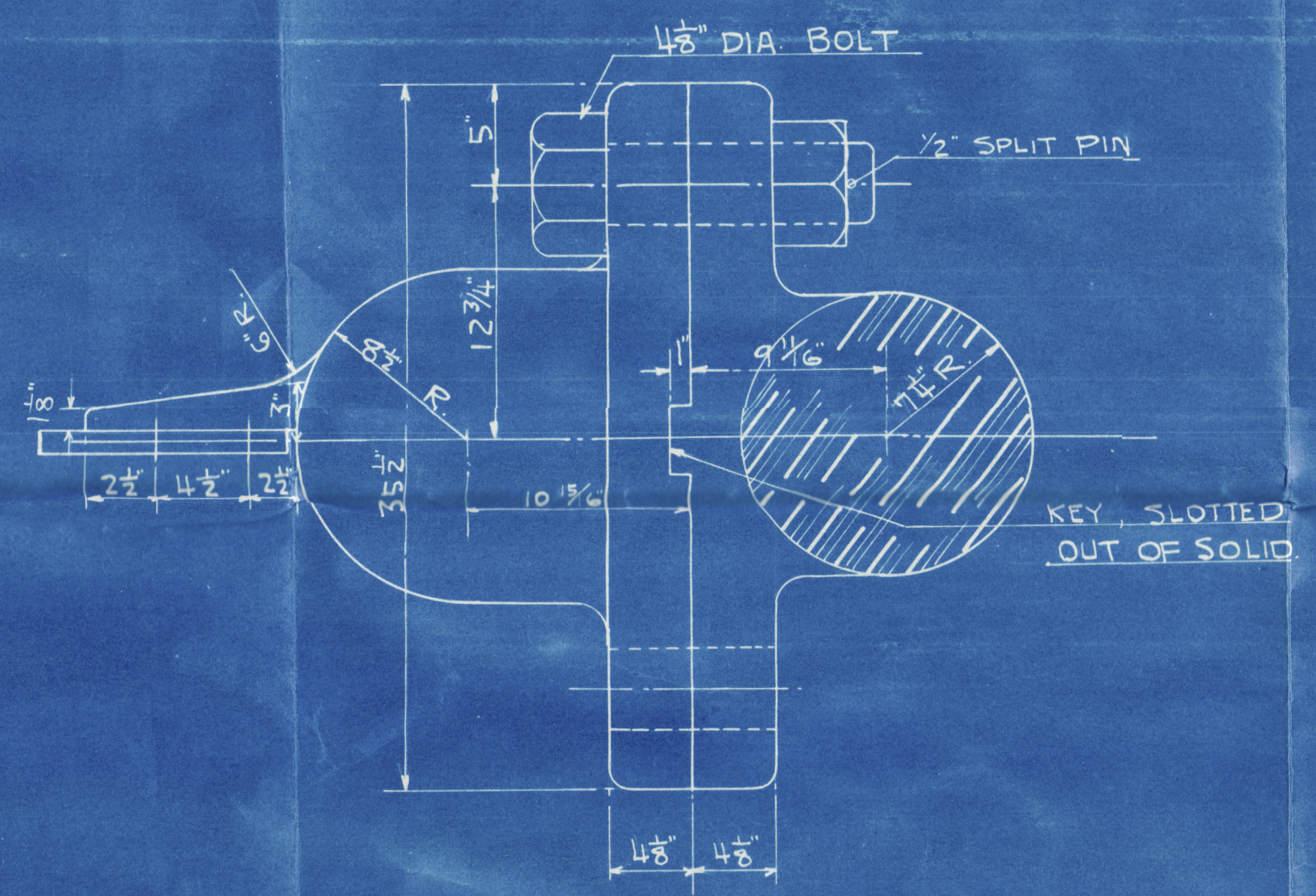


DETAIL OF PINTLE & GUDGEON (D)  
 SCALE  $\frac{1}{8}" = 1'$

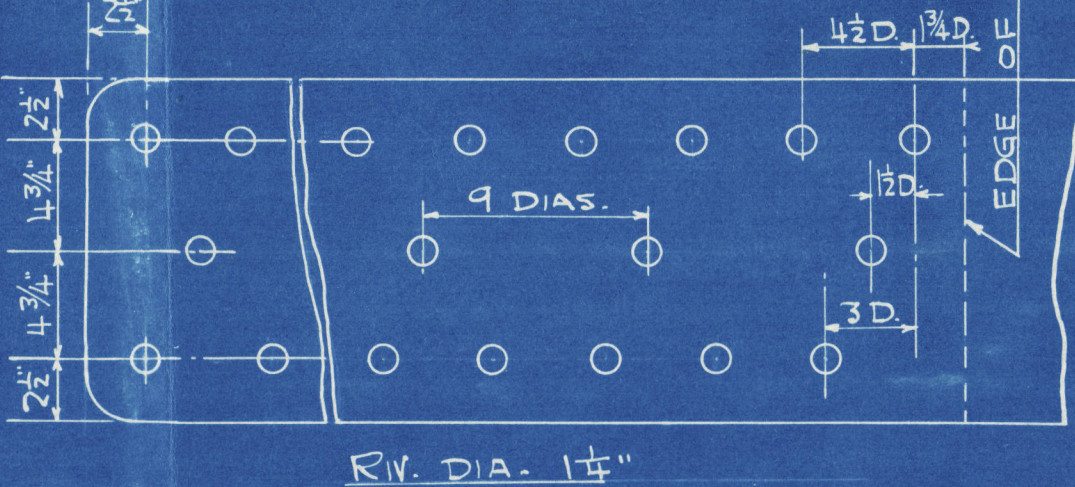


PARTICULARS	
TOTAL RUDDER AREA	241.5 SQ. FT.
SERVICE SPEED	14 K.
AREA ABOUT CENTRE LINE OF PINTLES	204.2 SQ. FT.
(A) x (D)	8.98
(D)	4.35

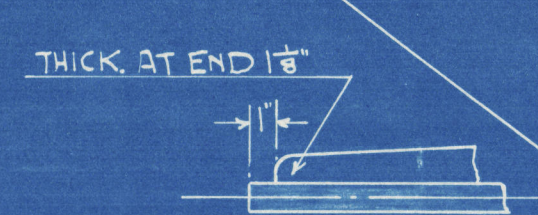
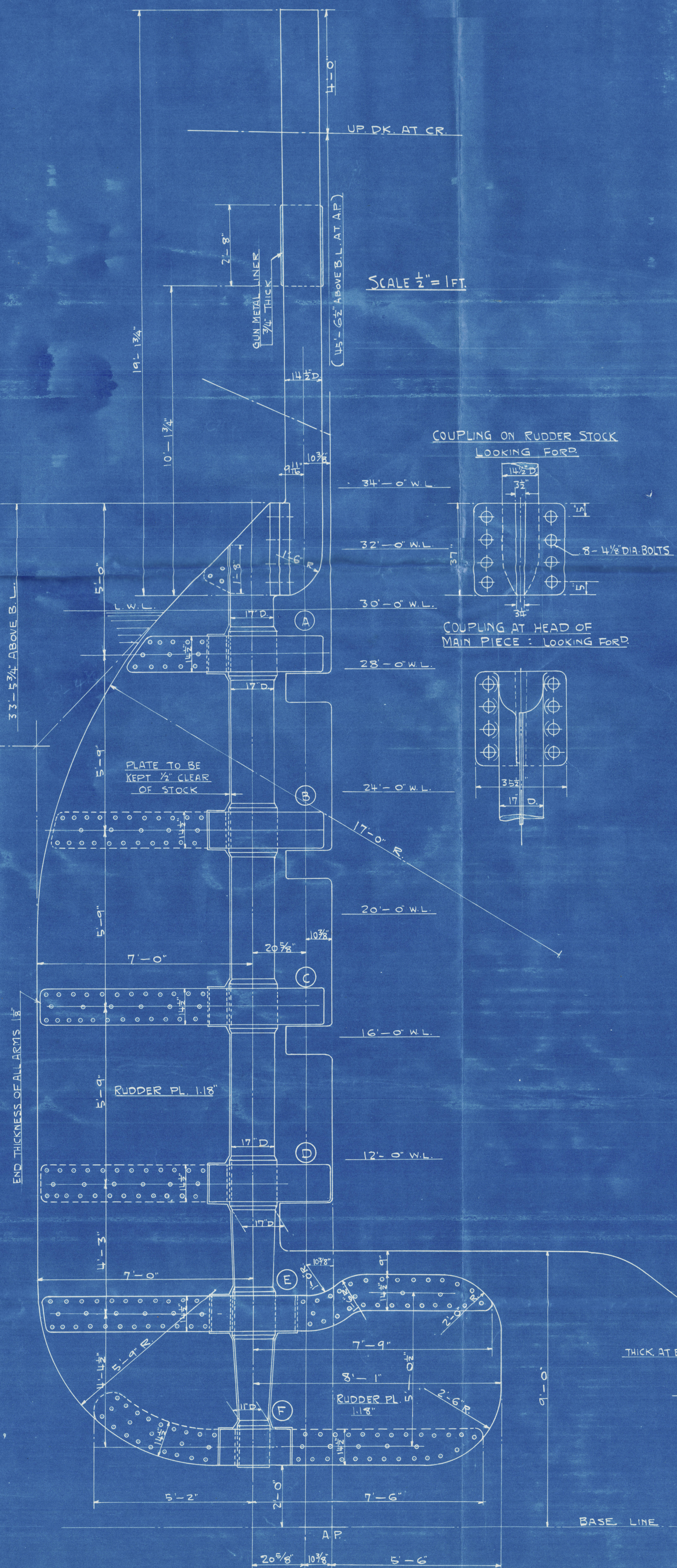
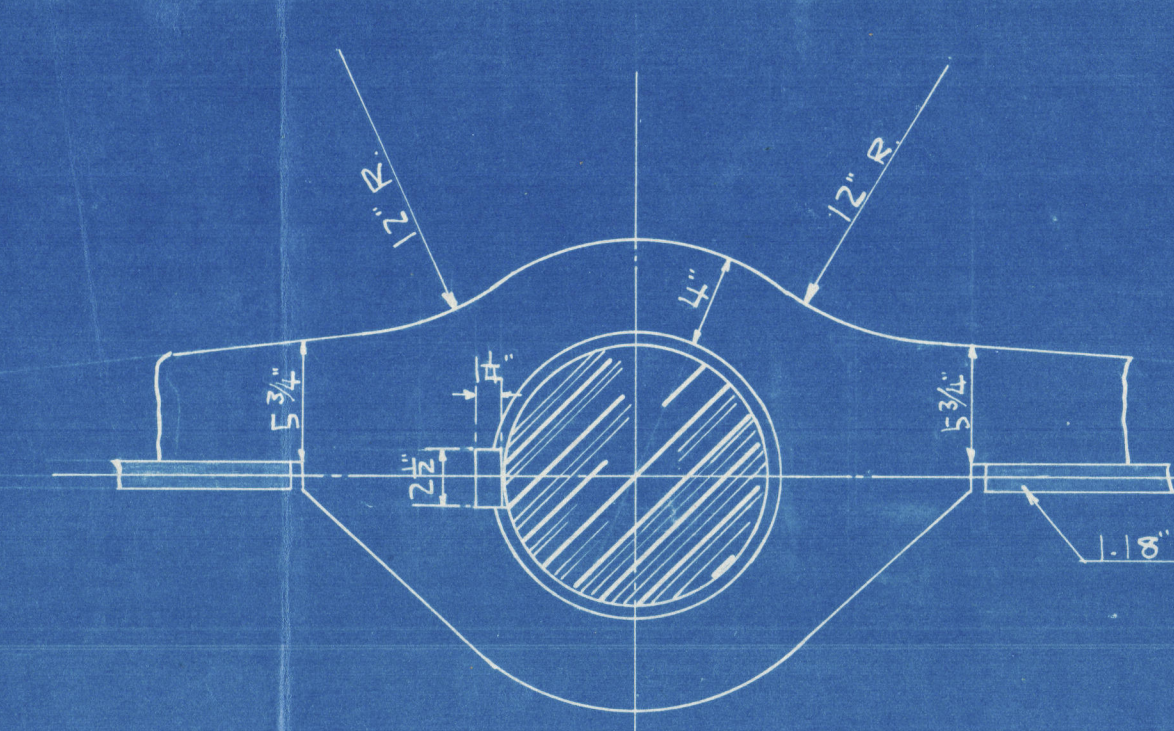
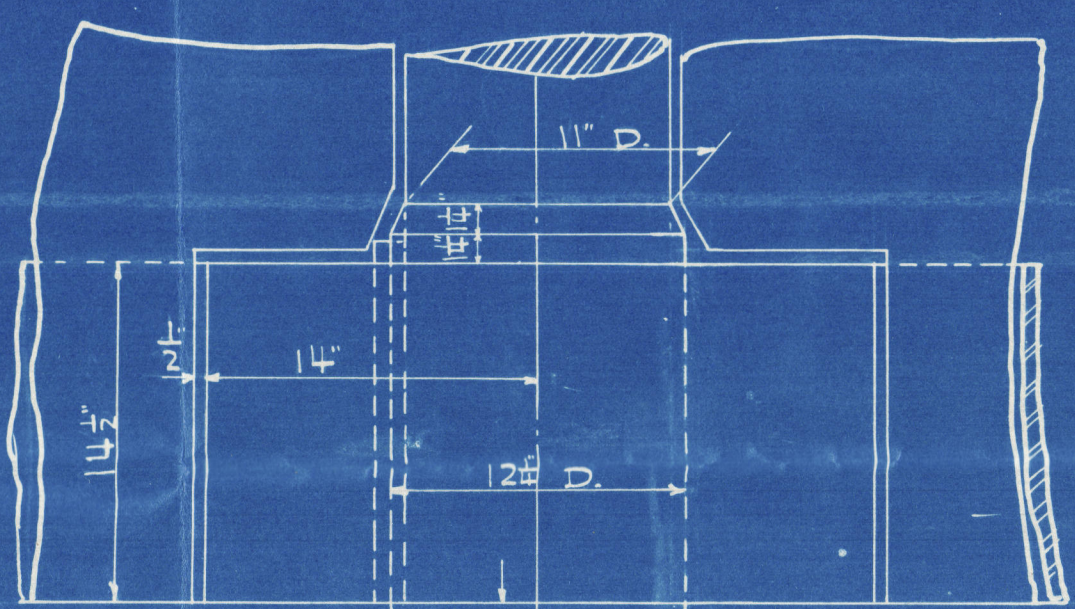
PLAN OF COUPLING  
 SCALE  $\frac{1}{8}" = 1'$



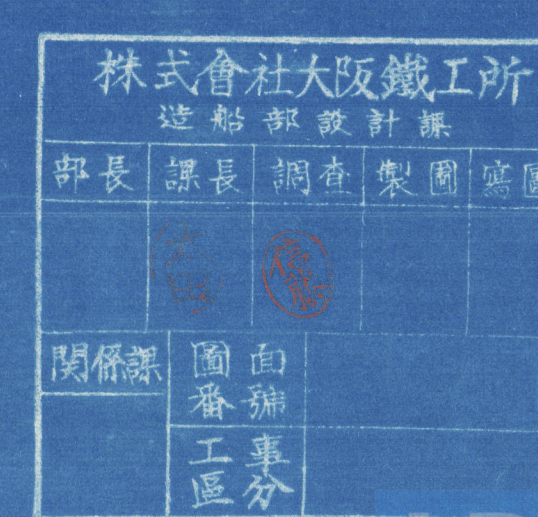
RIVETING IN ARMS



DETAIL OF ARM (F)  
 SCALE  $\frac{1}{8}" = 1'$



BASE LINE



4-5-18