

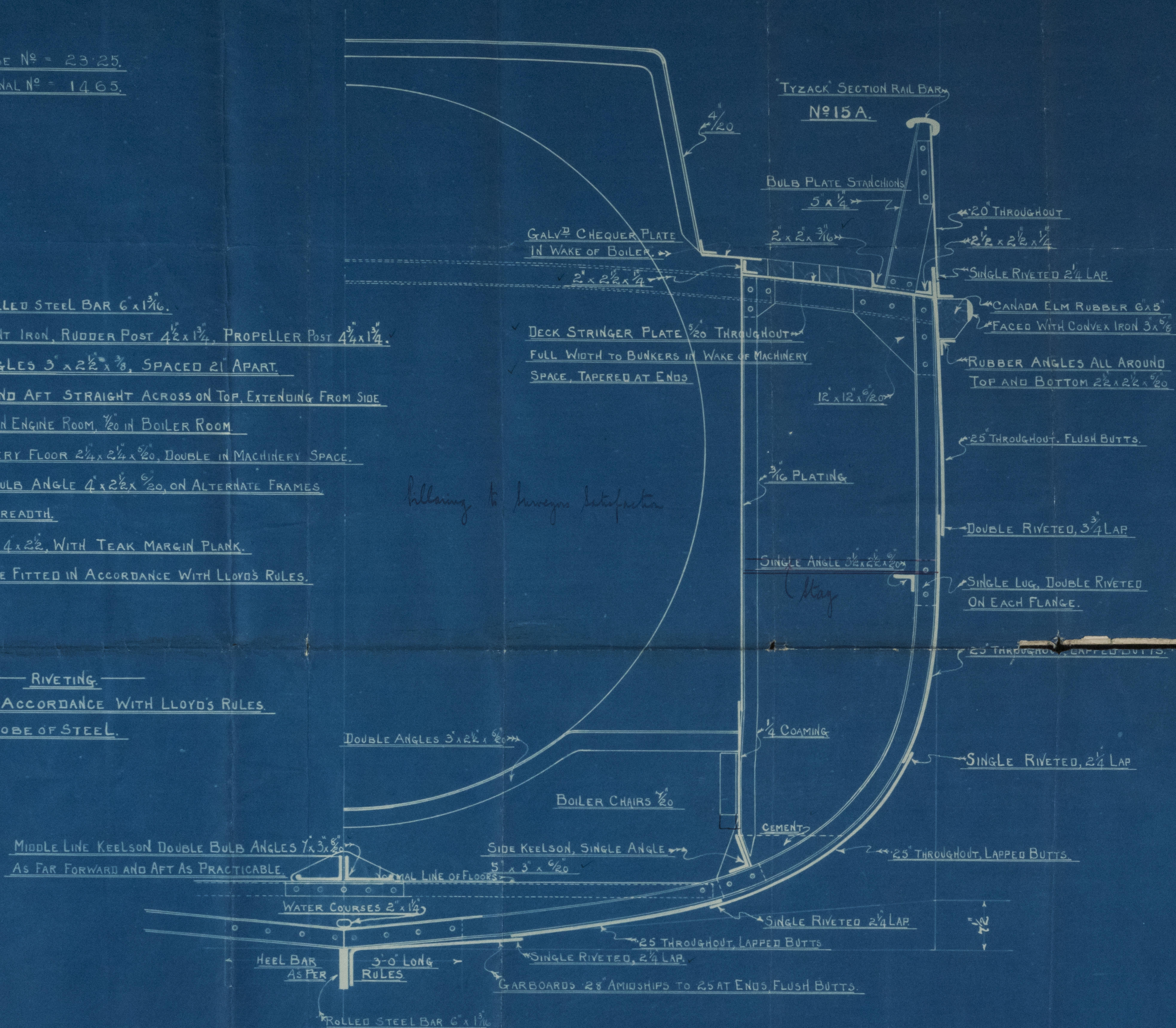
9.7.14

TRANSVERSE N^o = 23.25.
LONGITUDINAL N^o = 1465.

TO CLASS 100A FOR TOWING PURPOSES.

KEEL AND STEM OF ROLLED STEEL BAR 6" x 1 1/2".
STERN FRAME OF WROUGHT IRON, RUDDER POST 4 1/2" x 1 1/4", PROPELLER POST 4 1/4" x 1 1/4".
FRAMES OF BULB ANGLES 3" x 2 1/2" x 3/8", SPACED 21" APART.
FLOORS 10" x 3/20" FORE AND AFT STRAIGHT ACROSS ON TOP, EXTENDING FROM SIDE TO SIDE IN ONE PIECE, 3/20" IN ENGINE ROOM, 1/20" IN BOILER ROOM.
REVERSE FRAMES ON EVERY FLOOR 2 1/4" x 2 1/4" x 3/20", DOUBLE IN MACHINERY SPACE.
MAIN DECK BEAMS OF BULB ANGLE 4" x 2 1/2" x 3/20", ON ALTERNATE FRAMES.
CAMBERED 3/2" IN FULL BREADTH.
MAIN DECK OF PITCH PINE 4" x 2 1/2", WITH TEAK MARGIN PLANK.
BULKHEADS, 4 IN N^o, TO BE FITTED IN ACCORDANCE WITH LLOYD'S RULES.

RIVETING.
TO BE IN ACCORDANCE WITH LLOYD'S RULES.
RIVETS TO BE OF STEEL.



MIDSHIP SECTION
OF
STEEL SINGLE SCREW TUG.

SCALE 1" = 1 FOOT.

LENGTH O.A. 68'-0", B.P. 63'-0", BEAM M^{LD} 15'-0", DEPTH M^{LD} 8'-3".

BOAT N^o 441.

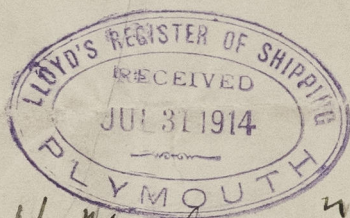
Midship Section

No 441

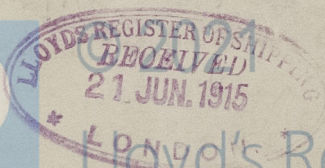
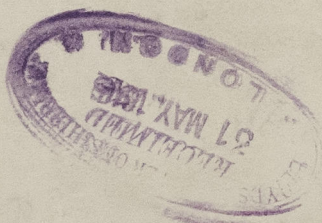
Steel Single screw Tug
Mfrs Philip & Son Ltd Dnt

Name: "Dartmouthian"

Ply Rpt No 5589



H. H. Hespont



Lloyd's Register
Foundation

009170-009181-0122