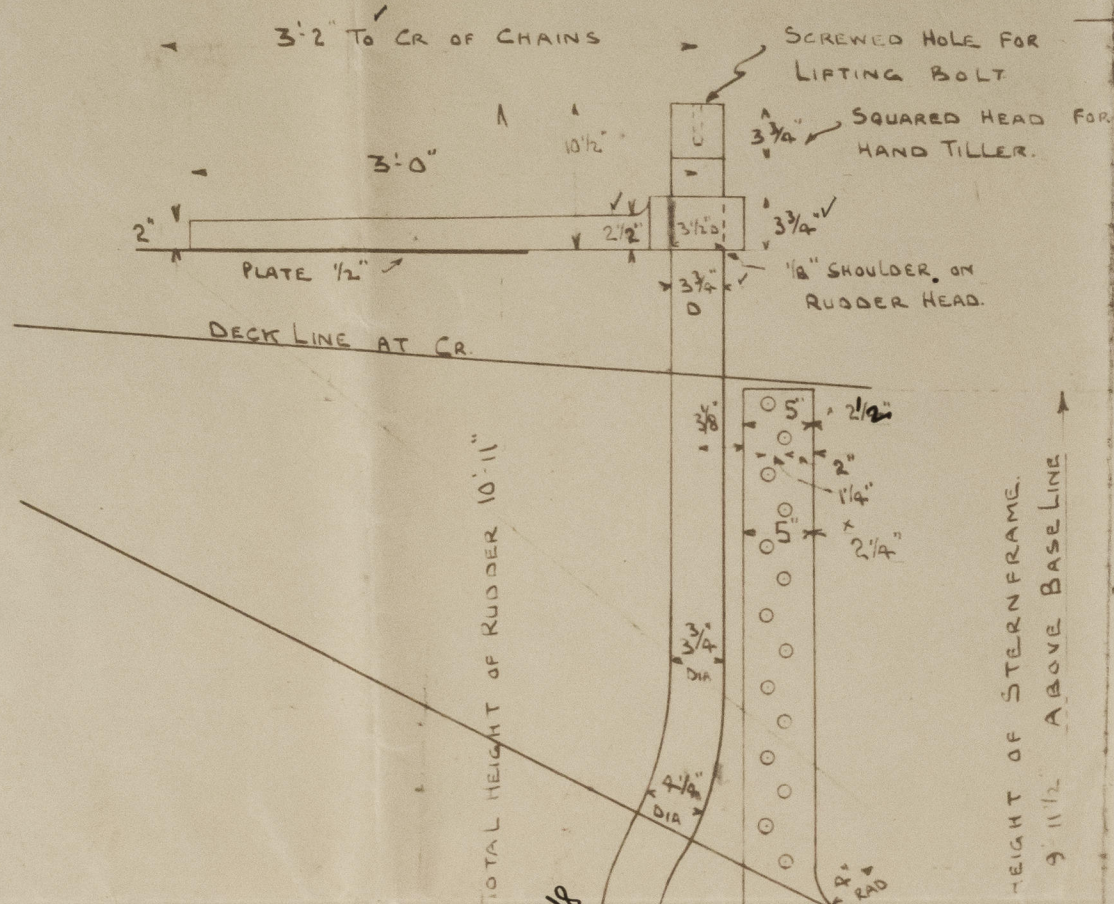
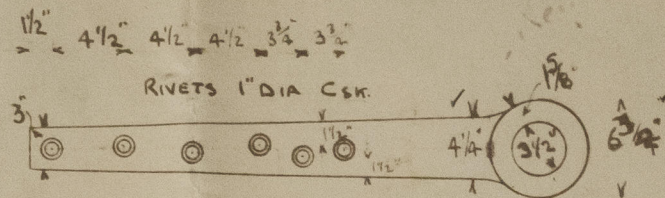


YARD N^o 38.

120.0' x 17.0' x 7.9'
L x D. 120' x 7.75' = 930

QUADRANT TILLER.

FORGED IRON.



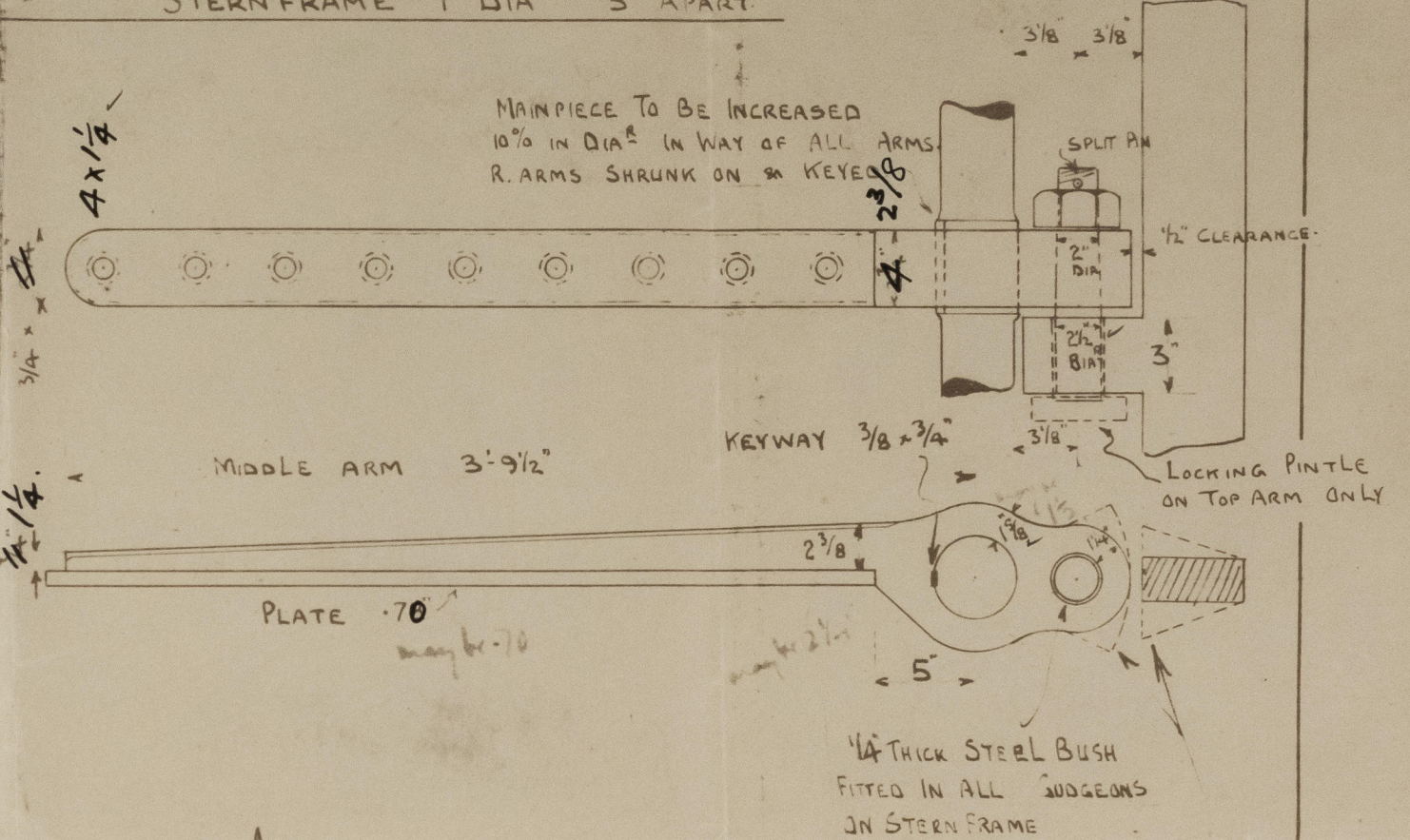
RUDDER & STERNFRAME.

SCALES 1" & 1 1/2" = 1 FOOT.

TO LLOYD'S TESTS & REQUIREMENTS.

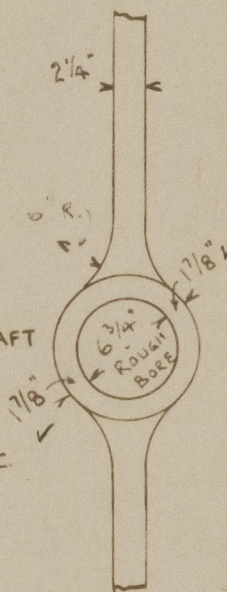
RIVETS IN RUDDER ARMS 1" DIA - 4 1/2" APART - C&K.

STERNFRAME 1" DIA 5" APART

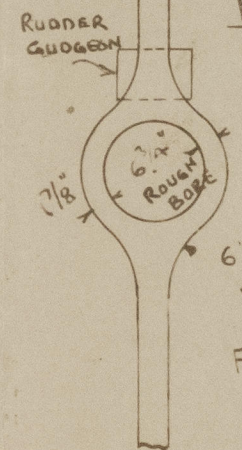


NOTE: STOPPER ON TOP RUDDER ARM & ON STERN FRAME IN WAY OF SAME. RUDDER TO TURN 45° EACH TO PORT & STARBOARD.

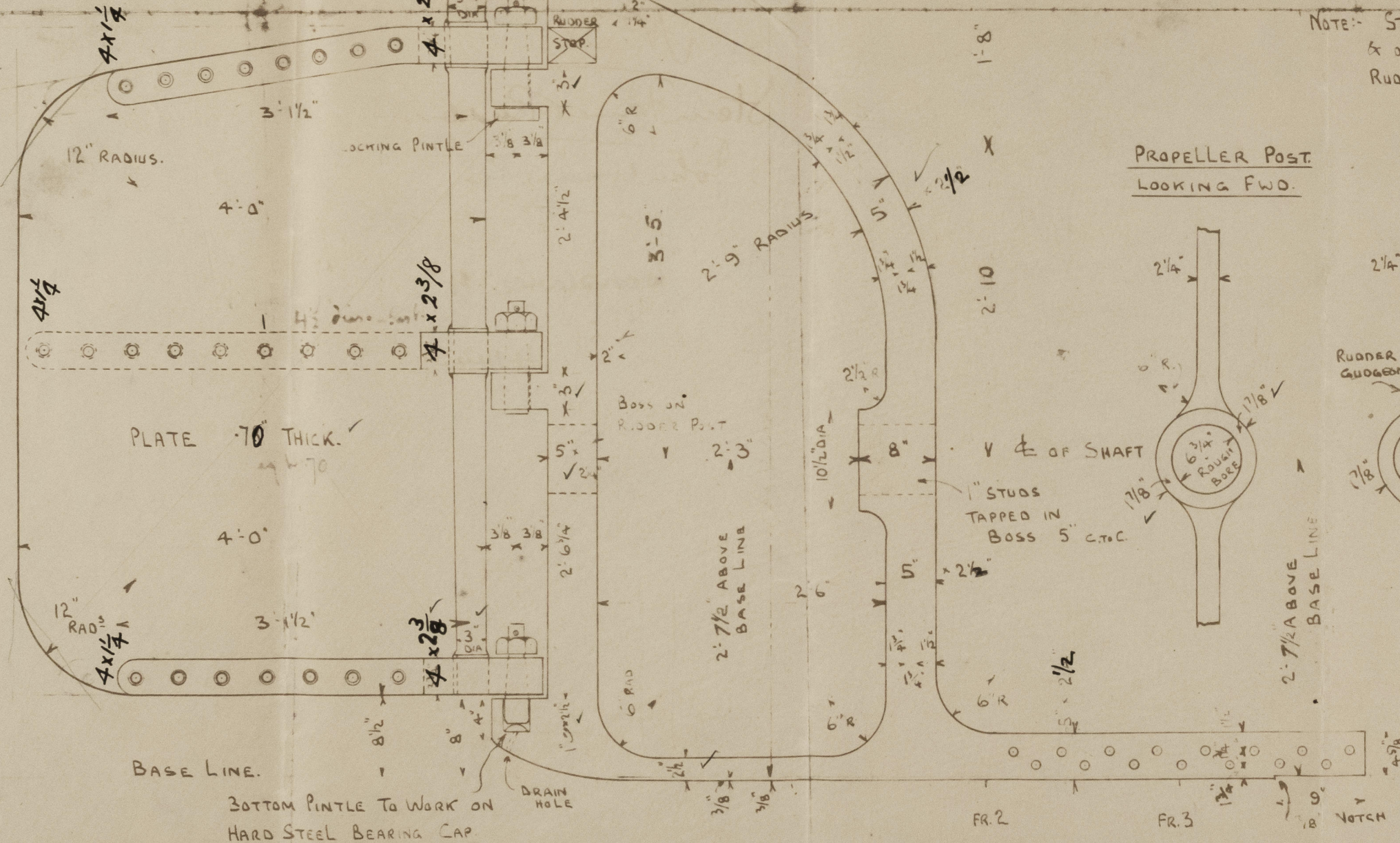
PROPELLER POST.
LOOKING F.W.O.



BOSS ON RUDDER POST
FOR WITHDRAWING
TAIL SHAFT.



FINISHED BORE
FOR TAIL SHAFT
7 1/4" DIA.



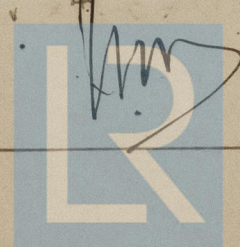
FULL SIZE TEMPLATES
THRO' FOOT OF STERNFRAME
WILL BE SUPPLIED.

BUILDERS.

JOHN HARKER LTD.

SHIPBUILDERS.

KNOTTINGLEY. YORKS.



© 2021

Lloyd's Register
Foundation

009170-009181-0106

No 38

Stern Name & Rudder.

John Harker Esq

S.S. "Constance H"

HULL REPORT No. 41445-



© 2021

Lloyd's Register
Foundation

009170-009181-0106