

H 66

No 279 PROFILE.

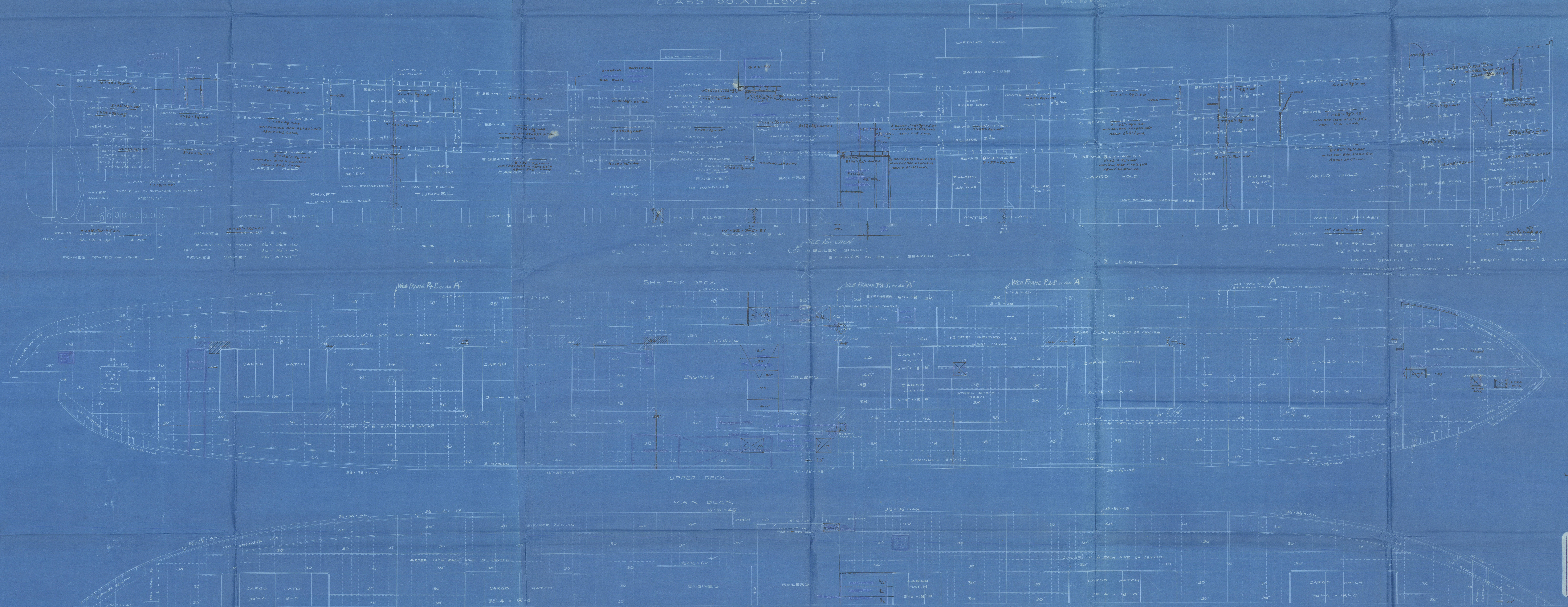
H66

PRINCIPAL DIMENSIONS: LENGTH B.P. 425'-0" BREADTH MLD 53'-8" DEPTH MLD 29'-0".

SCALE 1/8" = 1'-0"

CLASS 100.A.1 LLOYDS.

D. M. Wallace & Co.
23, Ave. 18, No. 2790
Naval Architects, Consulting Engineers,
and Surveyors,
Leadenhall House, 101, Leadenhall St.
London.
(Approved by Lloyd's Surveyors)
Jan. 6/1919



Printed
18/1/19

MITSUBISHI
ZOSEN KAISHA, LTD.
NAGASAKI WORKS
SHIP DESIGNERS OFFICE, A.
LLOYDS FINISH PLAN
DRAWN BY
CHECKED BY
APPROVED BY
DESIGNERS OFFICE NO.
DATE 2-7-1919

G. Kuwahara
H66
Lloyd's Register
Foundation

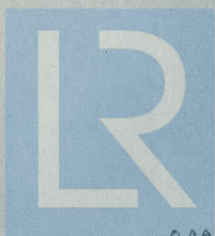
"Genoa Maru".

Profile and Deck

Mitsubishi Gosen Kaisha.

S. S. No. 317

Nagasaki Report No. 1240.



© 2021

Lloyd's Register
Foundation

009161-009169-0041