

GAMMELL LAIRD & CO. LTD.  
BIRKENHEAD.  
FOR ENCLOSURE TO  
*Lloyds Register*  
DATE *12-1-29*  
SHIP DEPARTMENT.

SCALE  $\frac{1}{2}'' = 1 \text{ FOOT}$

## TO LLOYDS REQUIREMENTS & TESTS

~~SEA~~ SPEED \_\_\_\_\_ 11½ KNOTS

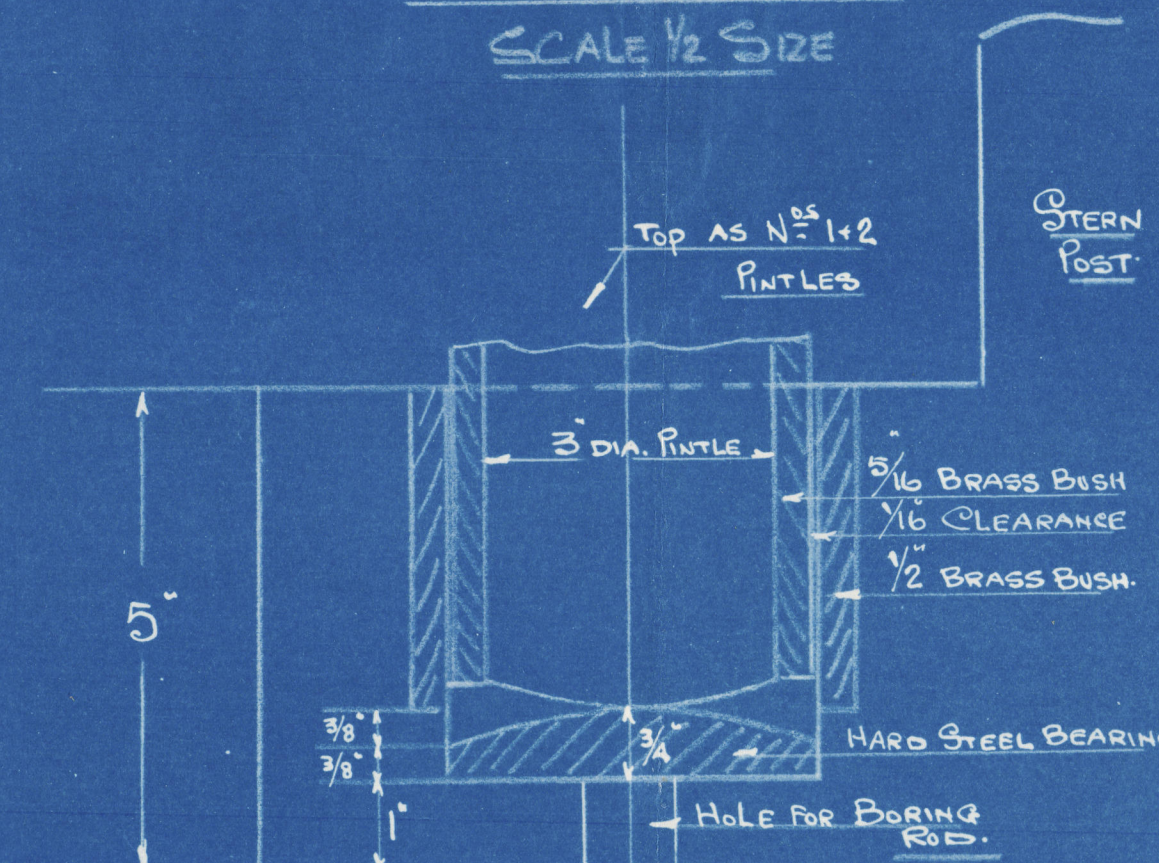
A x D PER TABLE 41 = 115 = RULE STOCK 53' DIAR

STERN FRAME OF FORGED INGOT STEEL

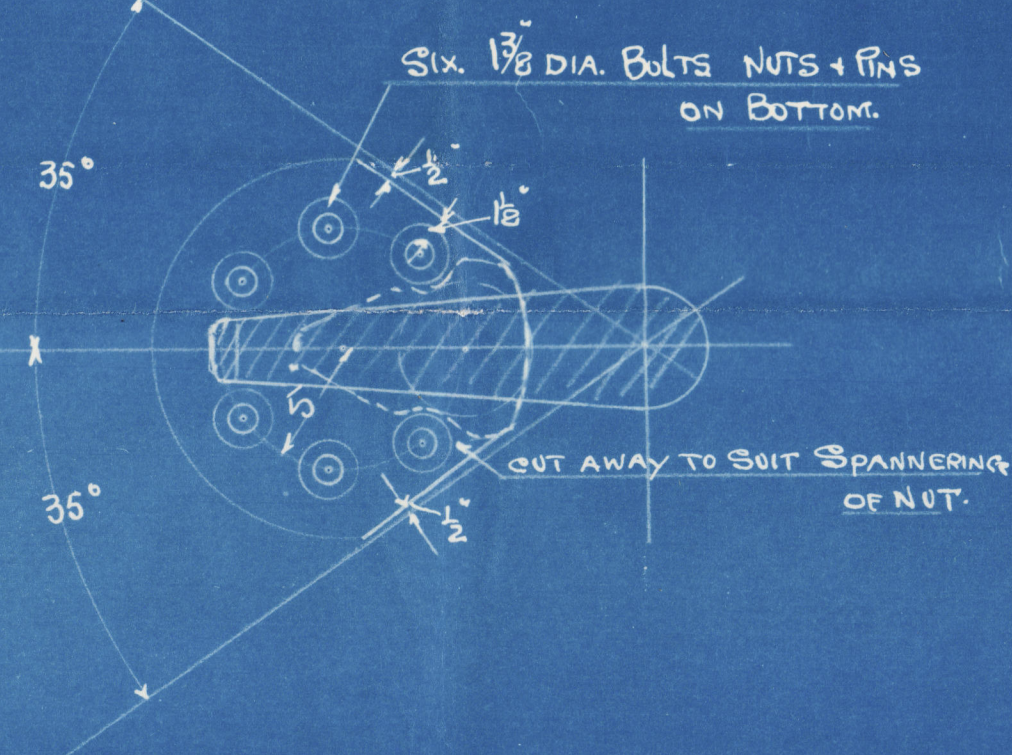
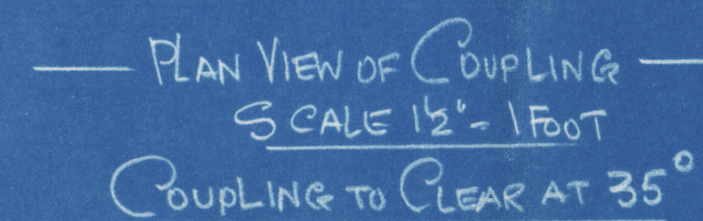
RUDDER STOCK "BEST" "MILD"

SCALE 1/2 SIZE

SCALE 1/2 SIZE



If this arrangement is adopted, the stock is to be suitably increased in diameter



5

W. J.  
16. 1. 21



Sten + Rudds Frame  
Cannell Laird

957

S. S. Peveril

LIVERPOOL

Report No. 95531



© 2021

Lloyd's Register  
Foundation

009083-009093-0095