

# MIDSHIP SECTION S.S. 211.

CLASS 100 A.I. SINGLE DK.

LENGTH B.P. 335'-0"

BREADTH EXTREME 48'-0"

DEPTH MOULDED 24'-10"

SCALE 1/2" = 1'

BRIDGE 4 1/2" x 4 1/2" x .54" X  
POOP 3 1/2" x 3 1/2" x .32" X  
F'CLE " " " " X  
BRIDGE STR. 4 1/2" x .52" STEEL X  
POOP " 3 1/2" x .32" STEEL X  
F'CLE " " " " X

BRIDGE DECK .32" STEEL OR .35" IRON  
POOP " .28" IRON  
F'CLE " .25" IRON  
" " SHEATED WITH PITCH PINE 5" x 2 1/2"

6" CROP

3" WOOD COVERS

HATCH SIDE COAMING .96" X

" END " .36" X

3 1/2" x 3 1/2" x .34" X

UNDER 46'

BRIDGE DECK KNEES 19" x .40"

POOP " " 16" x .40"

F'CLE " " 19" x .40"

BRIDGE DECK BEAMS 8" x 3" x .44" B.A. 1 ROW OF PILLARS

" " 1/2 " 6 1/2" x 3" x .40" B.A.

POOP DECK BEAMS 6" x 3" x .40" B.A. 1 ROW OF PILLARS

F'CLE " " 6 1/2" x 3" x .40" B.A. ONE EVERY FRAME 2 ROWS OF PILL.

PILLARS 2 5/8" REELED  
TO TAKE SHIFTING BOARDS

INTERMEDIATE FRAMES

3 1/2" x 3 1/2" x .40"

4 1/2" x 4 1/2" x .64" IN WELLS

3 1/2" x 3 1/2" x .44" TO .40" IN WAY OF ERECT.

54" x .60" TO 32" x .40" X 46" UNDER BRIDGE

DECK .40" STEEL OR .44" IRON FOR 1/2 L.

TO .30" " .35" " AT ENDS

DECK .30" " .33" " UND. BRIDGE

5" x 5" x .50"

DOUBLE 4" x 3" x .40"

WEB 21" x .34" AT CENTRE 16" AT SIDES

DOUBLE 4" x 3" x .40"

DOUBLE 4" x 3" x .40"

DOUBLE 4" x 3" x .40"

HATCH SIDE COAMINGS .46" @ 24" C. HATCH, .48" @ 26" C. HATCH.

" END " .40"

5 1/2" x 3" x .34" B.A.

8" x 3 1/2" x .54" B.A.

9" x 3 1/2" x .56" @ 26" C. HATCHWAY

TIE BARS IN HOLDS DOUBLE

3 1/2" x 3 1/2" x .40" ANGLES 17

OR 6" x 4" x .60 TEE BAR.

UNDER 48'

KNEES 25" x .50"

36"

7/8" RIV.

3" HOLE

BARS JOGGLED

HATCH END BEAM KNEES

36" x 36" x .60"

BEAMS 9" x 3 1/2" x .50" OUTSIDE OF BRIDGE

1/2 BEAMS 8 1/2" x 3" x .46"

THROUGH BEAMS IN WAY OF BRIDGE 8 1/2" x 3" x .46"

1/2 BEAMS " " " 7" x 3" x .40"

HATCH END BEAMS 12" x 4" x 4" @ 70 CHAN.

WITH 4 1/2" x 6" REVERSE BAR FROM COAMING TO SHIP'S SIDE 5" x 5" x .60

@ 26" C. HATCHWAY 12" x 4" x 4" @ 70 CHAN. WITH 4 1/2" x 6" REVERSE BAR

B.A. FRAMES 10" x 3 1/2" x .54" .58 IN E. & B.S. .54 IN FORE HOLD

B.A. FRAMES 9" x 3 1/2" x .72" .76 IN E. & B.S. .72 IN FORE HOLD

B.A. FRAMES 6 1/2" x 3 1/2" x .40" SPACED 24" APART IN PEAK

STEM 9 1/2" x 2 1/2" STERN FRAME 9 1/2" x 6 1/2" P.P. 8 1/2" x 6 1/2" R.P.

OR B.A. FRAMES 9 1/2" x 3 1/2" x .64" IN E. & B. SPACE.

PILLARS 4 1/2" 4'-1" APART

5 1/2" AT HATCH ENDS 6 RIVETS

3 3/4" IN WAY OF TUNNEL

4 3/4" HE. IN " " " 4 RIVETS

EQUIPMENT

L (B + D) = 24247

ERECTOR = 990

HOUSES = 274

25511

2 BOWERS STOCKLESS 48 3/4 CWTs.

1 " " 41 1/2 " "

1 STREAM EX. STOCK 13 " "

1 KEDGE " " 5 3/4 " "

270 FMS. 2" STUD CHAN CABLE

90 " 1 1/2" CHAIN OR 4 1/2" WIRE

120 " 12" HEMP TOWLINE OR 4" WIRE

2 @ 90 FMS 7" HAWSERS

2 @ 90 " 7" WAPPS

NO SIDE STRINGERS

BREADTH MOULDED = 47.66

DEPTH " = 24.83

B + D = 72.49

LENGTH = 334.5

L x (B + D) = 24247

DEPTH TO LENGTH = 13.46 FOR WELLS

" " " 10.2 FOR BRIDGE

d = 21'-6"

GUSSETS 3 1/2" x 3 1/2" x .44" EVERY 3<sup>rd</sup> FRAME

MARGIN PLATE .42" X

.52 IN B.S.

BRACKETS .36" TO .34" .46" IN B.S.

CEILING 2 1/2" W.W.

TANK TOP .38 TO .34

" .50" L.V. IRON IN ENGINE SPACE

" .54" L.V. IRON

INTERCOSTAL

IN WAY OF E.S.

CENTRE PLATE 4 1/2" x .46" TO .38"

.54" IN B.S.

.50" IN E.S.

DOUBLE FOR 1/2 L.

4" x 4" x .58" TO .54" SINGLE

CENTRE KEELSON 4" x .48" TO .38"

.58" IN B.S.

4" x 4" x .58" TO .54" AT ENDS

6" SEAM 1" RIV. KEEL 45" x .90" TO .64"

BUTTS OVERLAPPED & QUAD. RIV. 1 1/2" RIV. AMIDSHIPS

TREBLE AT ENDS

DOUBLE ANGLES FROM COLLISION BULKHEAD TO AFTER END OF ENGINE ROOM

2 STRAKES OF SHELL NEXT TO KEEL TO HAVE A THICKNESS MAINTAINED TO COLL. BULKHEAD

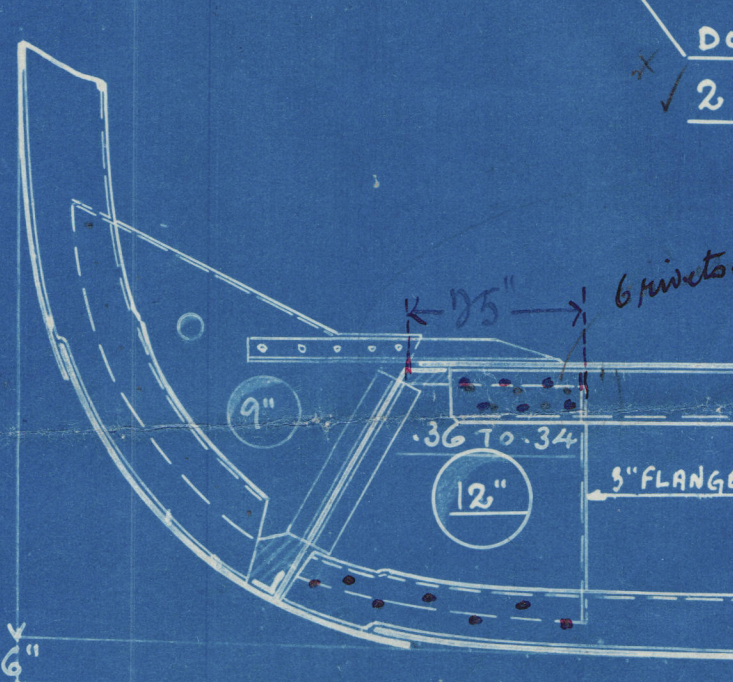
NOTE:- ALL SHELL PL. BUTTS  
EXCEPT SHEERSTRAKE AND  
STRAKES MARKED OTHERWISE  
QUAD. RIV. AND OVERLAP.  
FOR 1/2 L. SHEERSTRAKE  
BUTTS DOUBLE STRAPPED  
AND TREBLE RIV. FOR 1/2 L.

.58" TO .44"

4 1/2" x 3 1/2" x .42"

6"

BUTTS TREBLE RIV. AND  
OVERLAP WHERE NOT  
EXCEED. RULE WIDTH



ARRANGEMENT OF ALTERNATE EQUIVALENT FLOOR, TWO INTERCOSTALS

JOHN BLUMER & CO.  
BUILDERS  
21-9-11  
22-9-11  
JOHN BLUMER & CO.  
BUILDERS  
21-9-11  
22-9-11



J Blumer & Co.

No 211

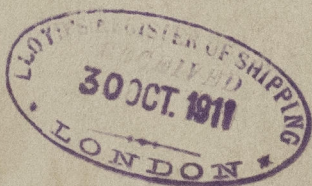
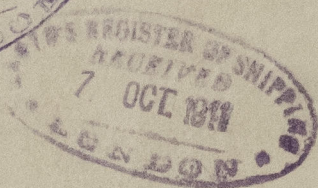
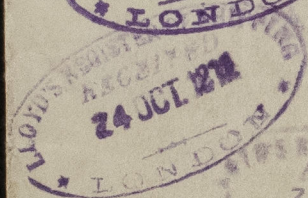
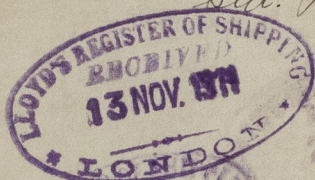
Amended



Section

Wearwood

Sld. Rpt. No. 25282



LR

© 2020

Lloyd's Register  
Foundation

009074-009082-0142