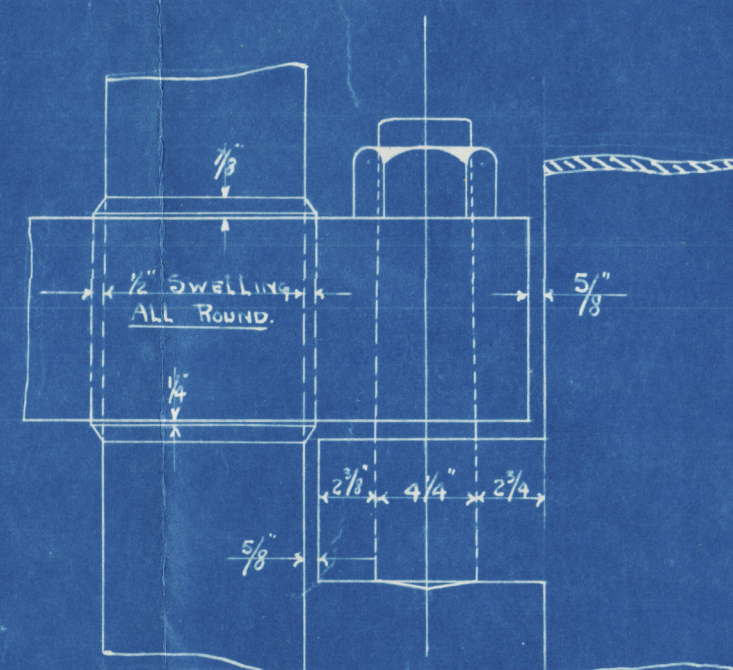


S.S. 201

SCALE $\frac{1}{2}'' = 1 \text{ FOOT}$

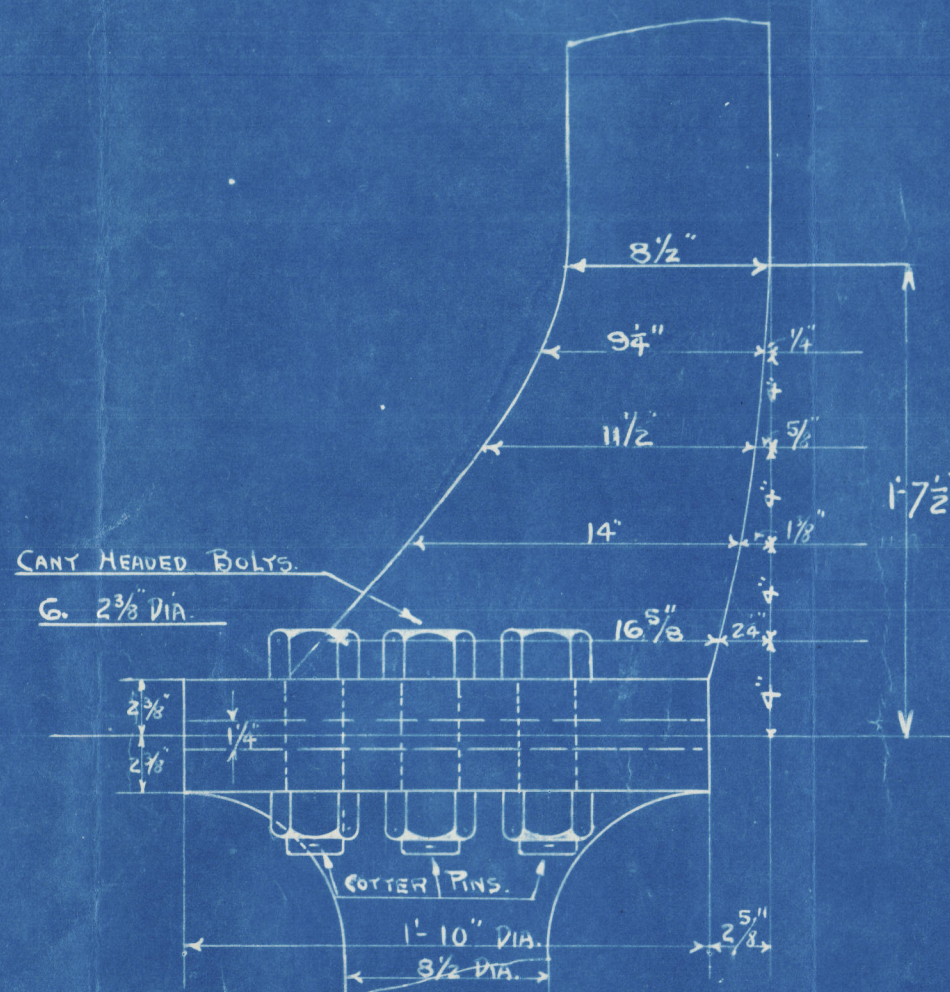
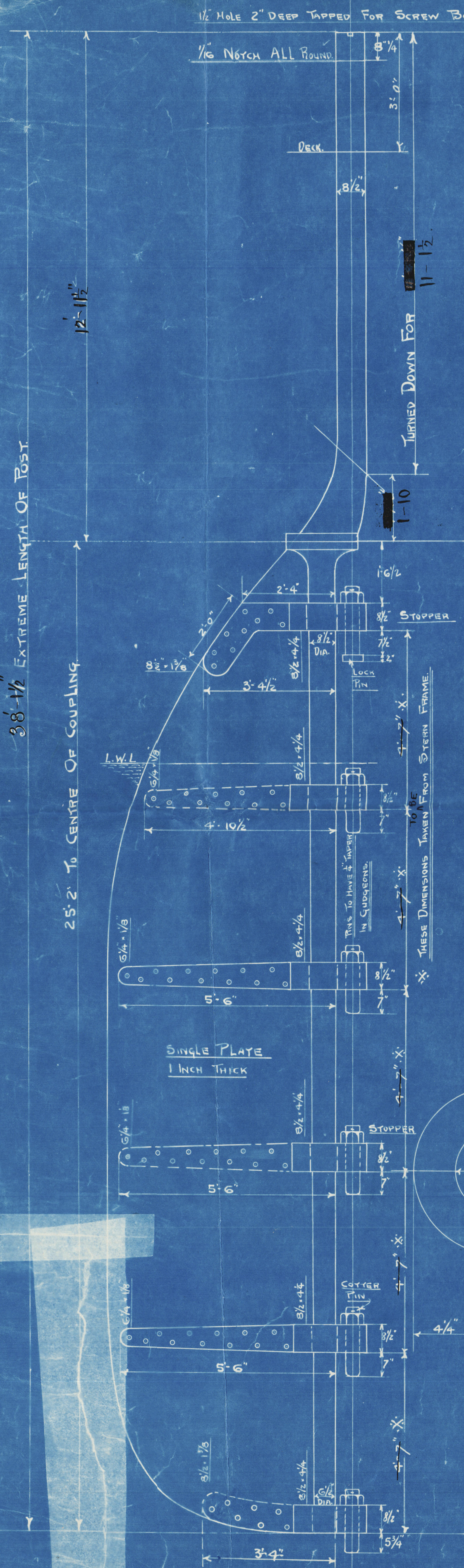
- To LLOYDS REQUIREMENTS.



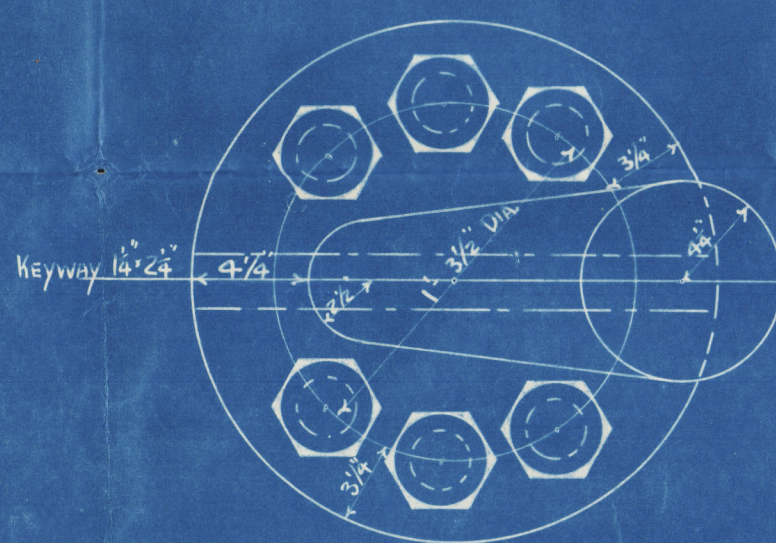
SKETCH SHOWING SWELLING
FOR KEYWAY.
SCALE $\frac{1}{8}'' = 1 \text{ FOOT.}$

PLAN OF STOPPERS
SCALE 3" = 1 FOOT.

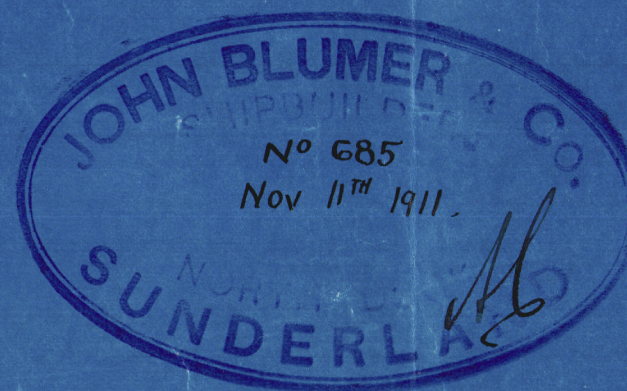
FULL SIZE PLAN OF STOPPER WILL BE SENT.



DETAIL OF COUPLING
SCALE $\frac{1}{2}'' = 1 \text{ FOOT}$



PLAN of GUDGEONS
SCALE 3" = 1 FOOT.



5" 1/16 HOLE FOR 1 1/4" BIVETS SPACED 5 5/8" CENTRES & REELED

TUDDER TO HAVE 3/8" CLEARANCE

SCANTLING NO 383

DIA OF HEAD 8 1/2"

" " MAINPIECE AT HEEL 6 1/2"

" " FINILES 4 1/4"

DEPTH OF ARM AT MAINPIECE 8 1/2"

THICKNESS " " " " 4 1/4"

" " " " POINT 1 1/8"

DEPTH " " " " 6 1/4"

PINS TO HAVE 1/4" TAPER IN GUDGEONS

TO BE BUILT TO LLOYDS REQUIREMENTS

TUDDER TO HAVE 5/8" CLEARANCE AT TOP

CENTRE OF TUDDER STOCK TO BE IN

LINE WITH CENTRE OF FINILES

WATER REELED
J.S.S.
GENUINE
13-11-11
SHEPHERD

CENTRE of GRAVITY 3.09' AFT. OF CENTRE of PINNLES
AREA OF RUDDER 124 sq (ABAFT of CENTRE of PINNLES)

$$124 \times 3.09 = 383$$

Ed. Wearwood

Sld. Rpt. No. 25282.
J. Blumner & Co

No. 211

Rudder Plan



© 2020

Lloyd's Register
Foundation

009074-009082-0141