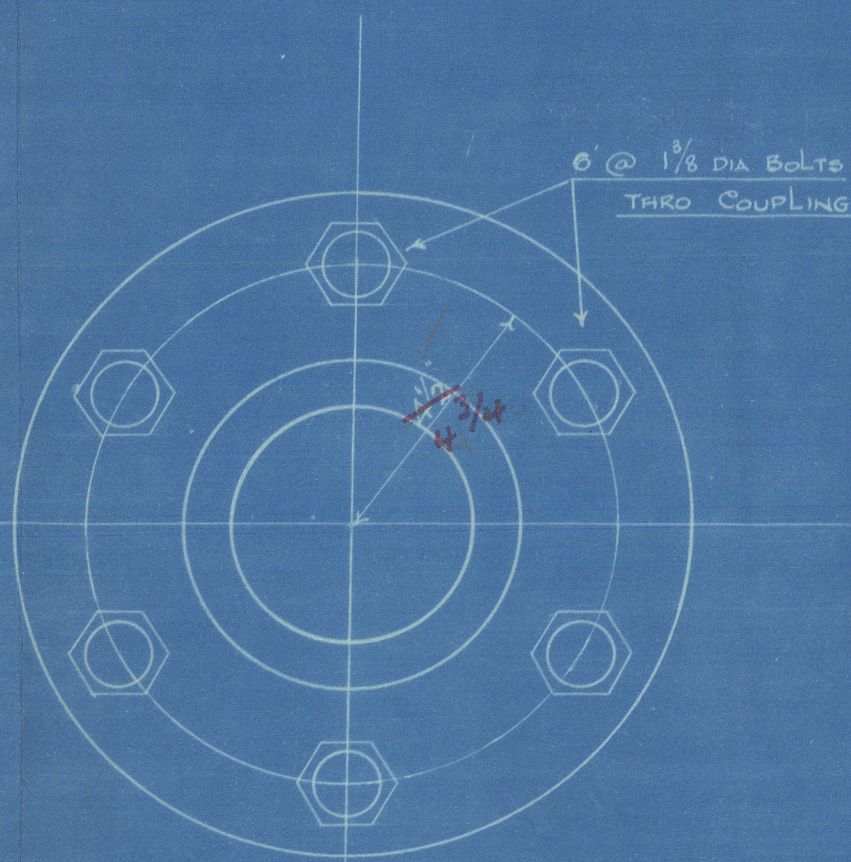
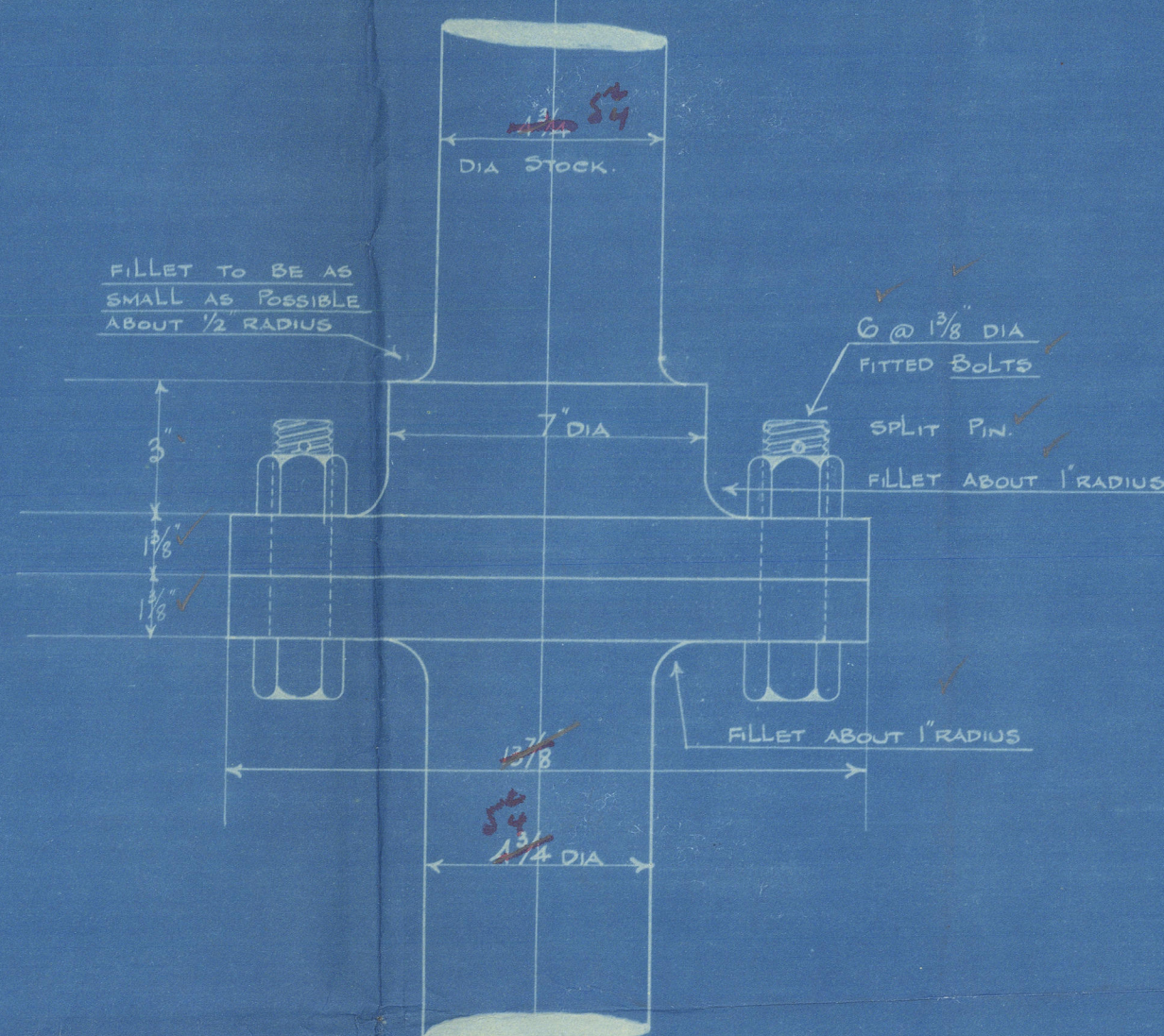


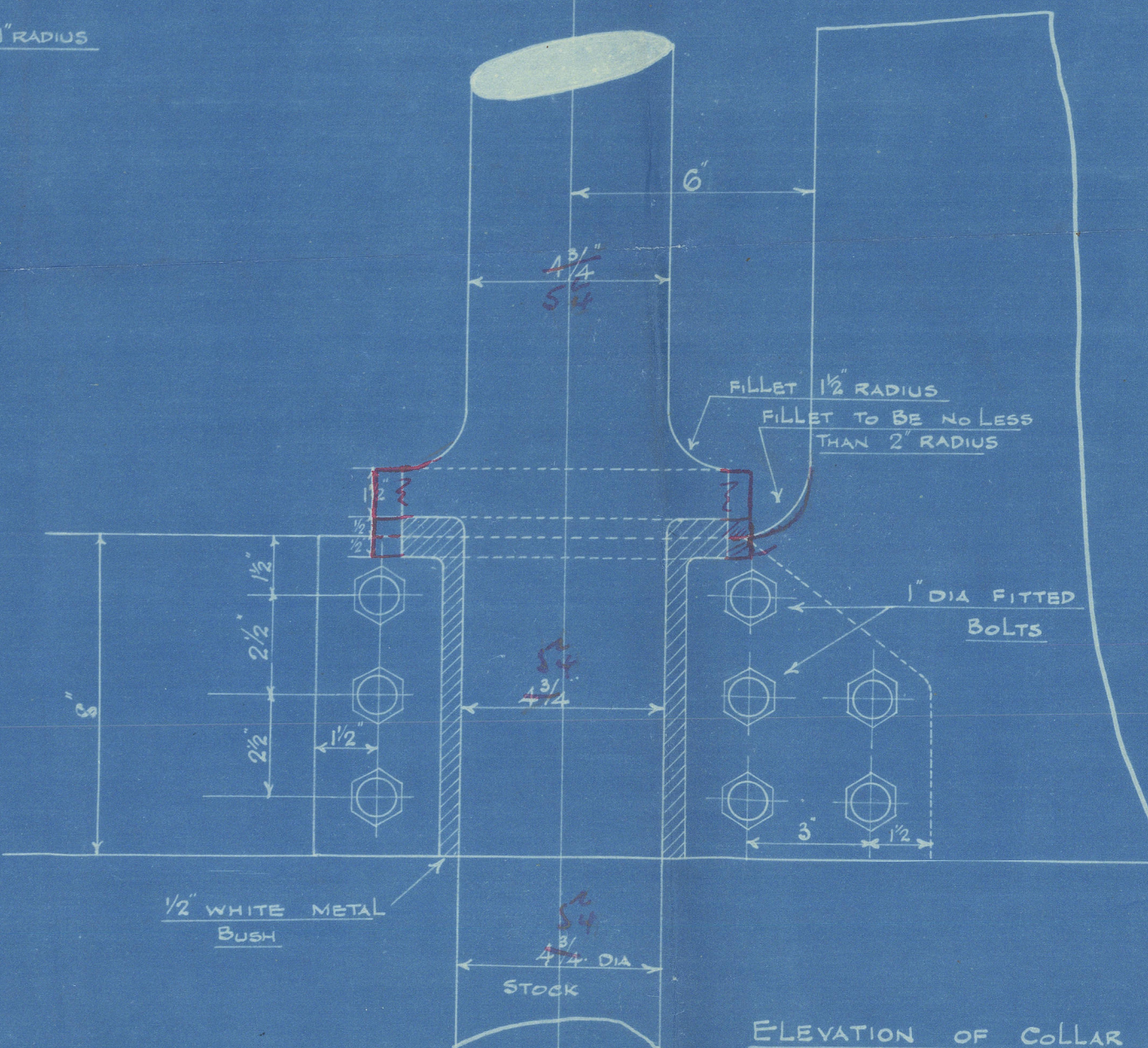
6/4/33



PLAN VIEW OF COUPLING



ELEVATION OF COUPLING



ELEVATION OF COLLAR AND STERN POST GUDGEON

PLAN No. 401  
FOR ENCLOSURE TO  
Messrs. Lloyd's  
FROM  
COCHRANE & SONS, LTD.  
SHIPBUILDERS SELBY  
DATE 27/3/33

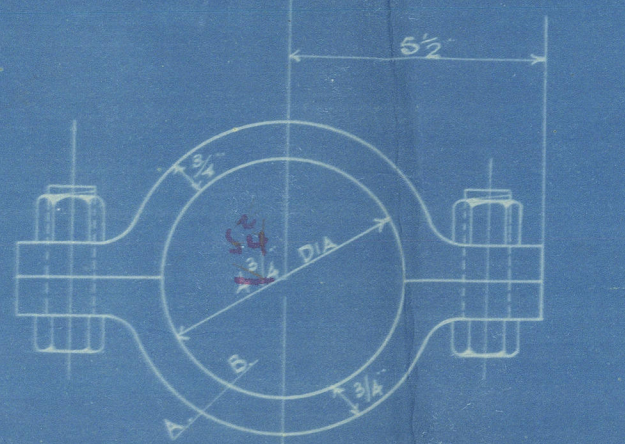
# STERN AND RUDDER PLAN

No 793

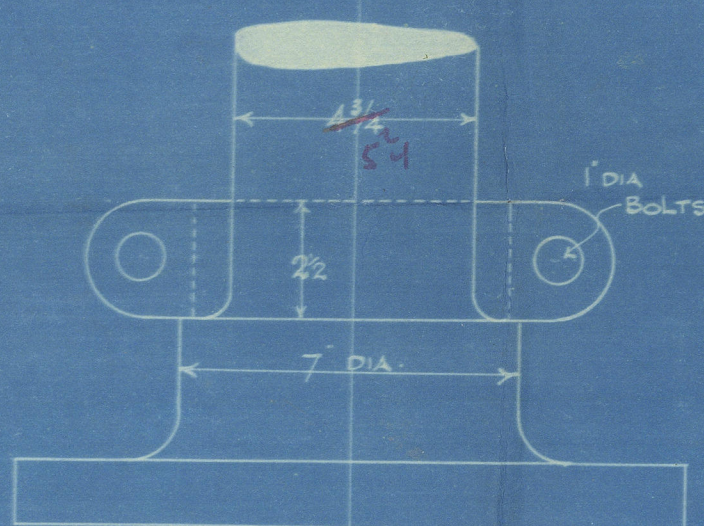
SCALE 1" = 1 FOOT

Speed not exceeding 10 knots

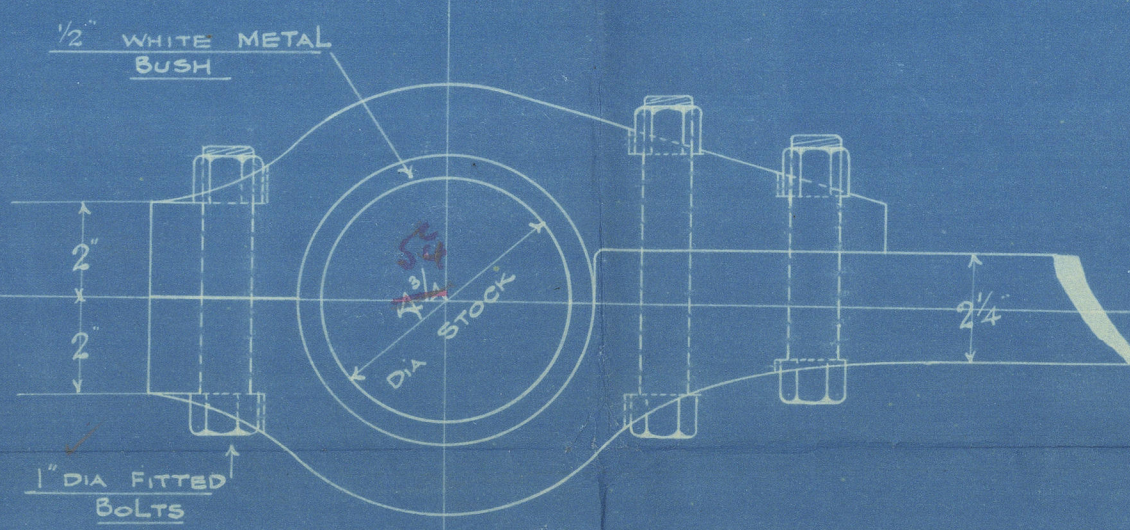
DETAILS 1/4" = 1 INCH  
TO LLOYDS TEST



SECTION THRO' A-B



DETAILS OF LOCKING HOOP  
IN TWO PIECES



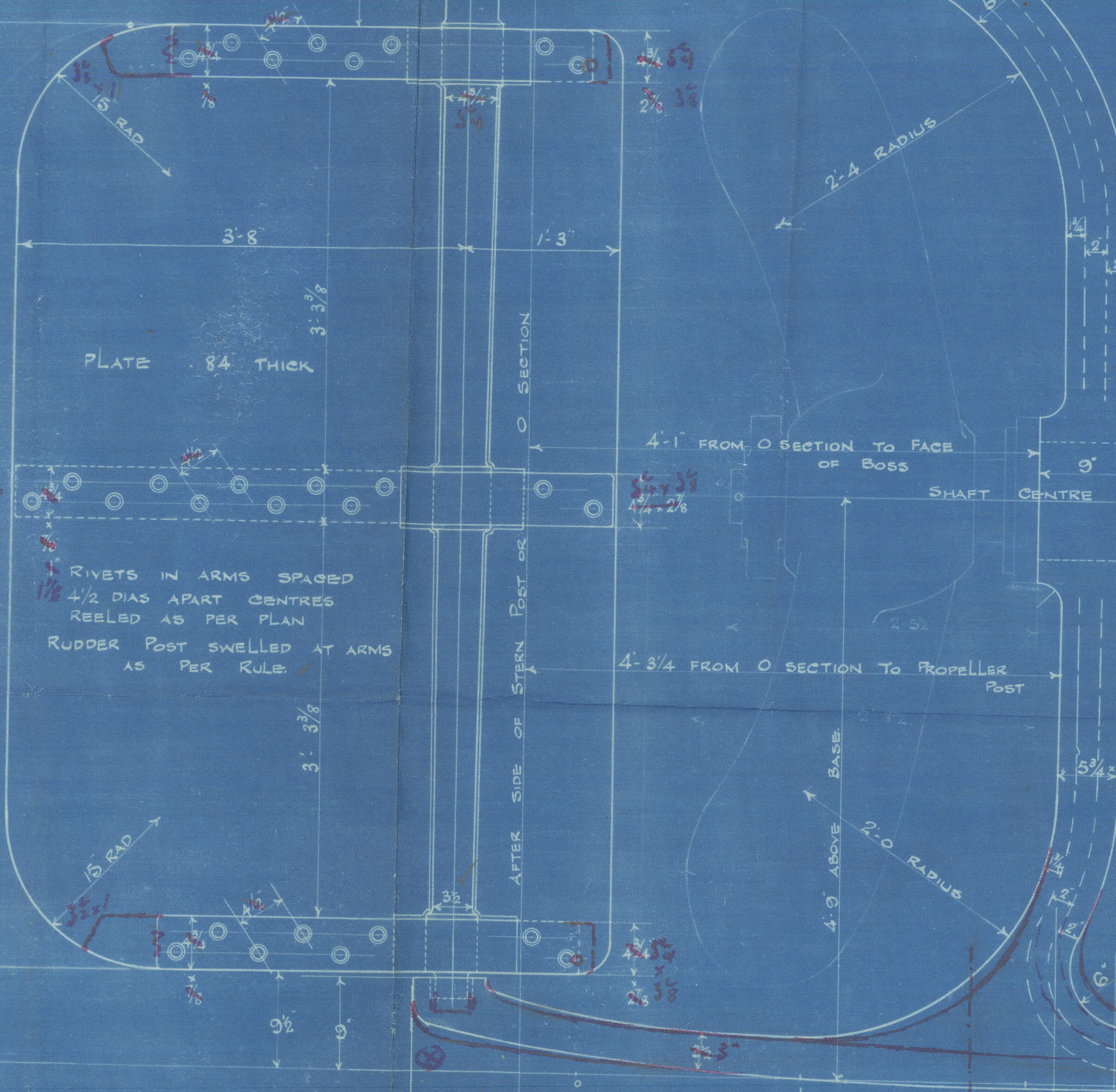
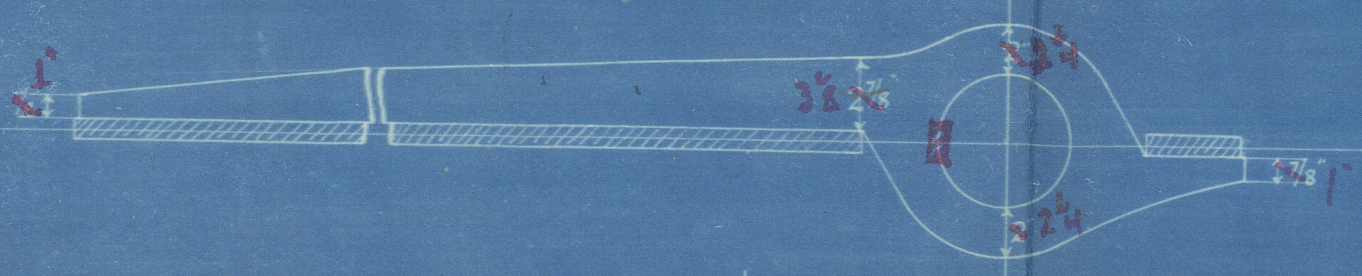
SECTION THRO' GUDGEON

Height of Rudder to be carried low

WROUGHT IRON STERN POST  
RIVETS 1 DIA RIVETS  
SPACED 5 DIAS APART CTR TO CTR

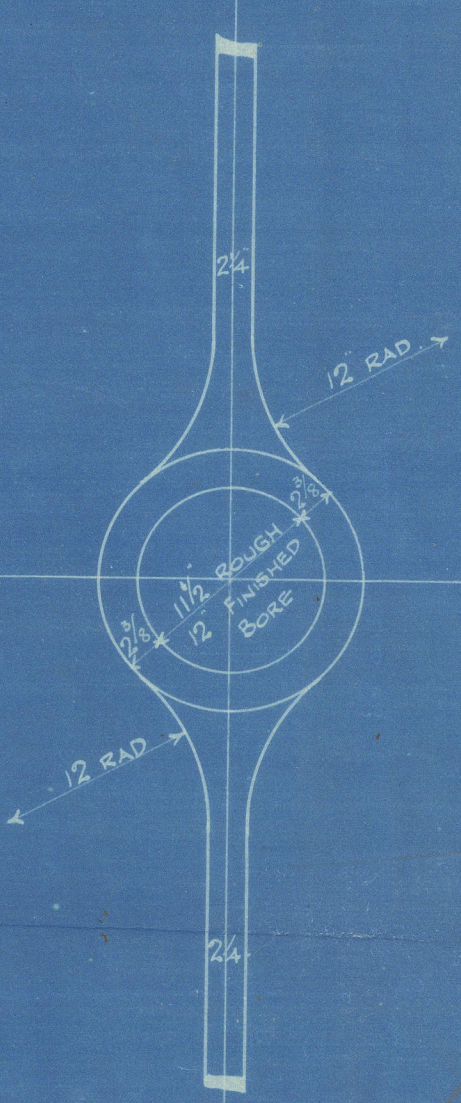
DETAIL OF RUDDER ARMS

SCALE 1/8" = 1 INCH



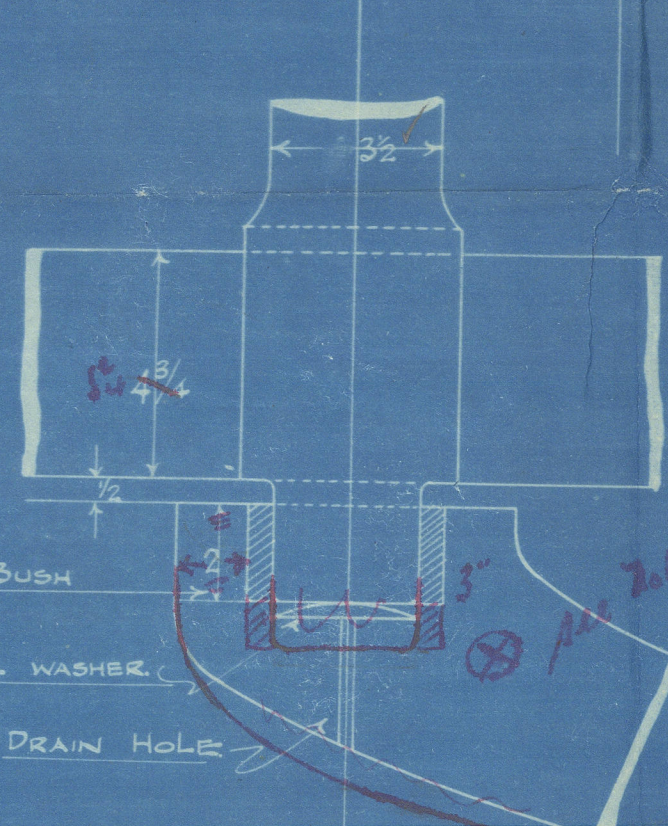
RIVETS IN ARMS SPACED  
1/2 DIA APART CENTRES  
REELED AS PER PLAN  
RUDDER POST SWELLED AT ARMS  
AS PER RULE

PROPELLER 8 0 DIA



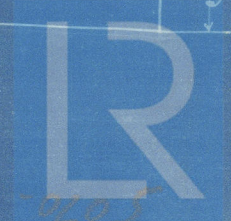
92/16

ces. b. h. 13



DETAIL OF BOTTOM  
GUDGEON

TEMPLATE OF BOTTOM WILL BE  
SENT - LATER





Cochran's 793.

Plan of rudder  
and stem frame.

s/s Salvage Prince  
Hull Rph M 35095

5020 - 450600 - 050600

437  
5020

009050 - 009057 - 0205

793



© 2021

Lloyd's Register  
Foundation