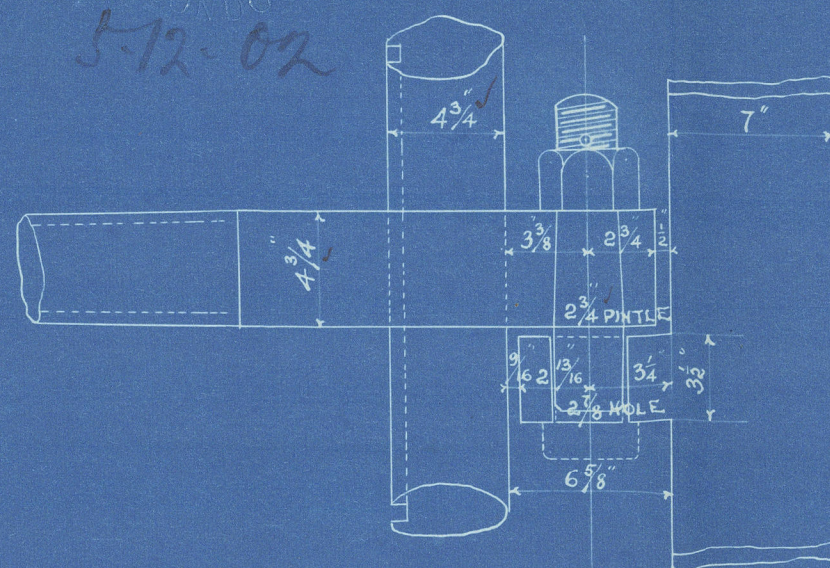


DETAIL OF GUDGEONS.

SCALE 1/2 INCHES = ONE FOOT.



STOPPER GUDGEON AT A.A.

STOPPER GUDGEON AT C.C.

ORDINARY GUDGEON AT B.B.

M^c LACHLAN PATENT BUILT RUDDER.

SCALE 1/2 INCH = ONE FOOT.

STERN FRAME.

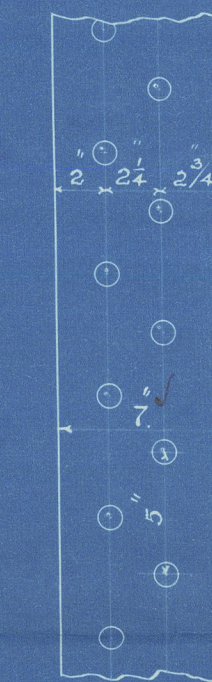
SCALE 1/2 INCH = ONE FOOT.

SKETCH OF HOLES IN SCREW FRAME.
HOLES 1 1/8 DIA^s SPACED 5" APART CENTRES.
EXCEPT WHERE MARKED OTHERWISE.

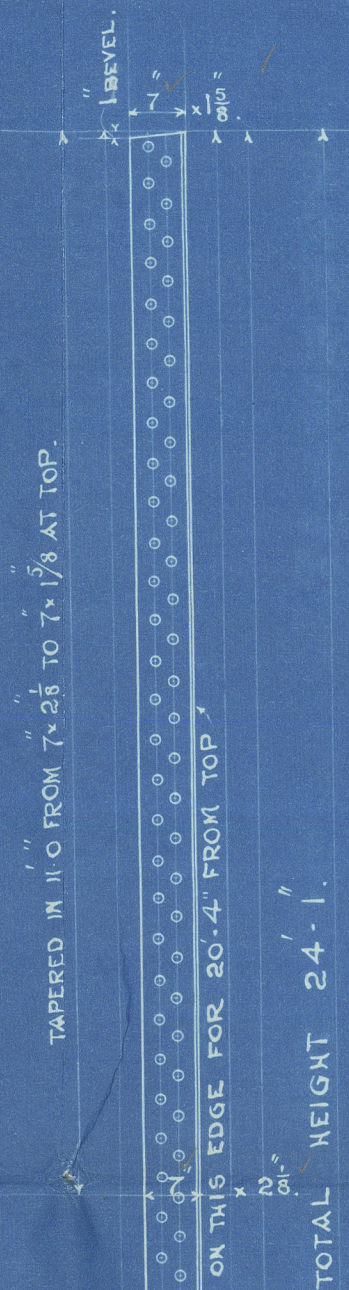
STEM

SCALE 1/2 INCH = ONE FOOT.

SKETCH OF HOLES IN STEM
HOLES 1 1/8 DIA^s SPACED 5" APART CENTRES.



NOTE - A TEMPLATE OF STEM WILL BE SUPPLIED, ALSO FULL
SIZED TEMPLATES OF SECTIONS, THESE SKEWN
ON PLAN ARE ONLY APPROXIMATE.



FORGINGS TO BE SUBMITTED TO LLOYDS
AND APPROVED BEFORE BEING FORGED.



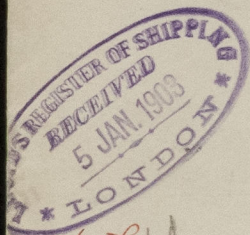
N^os 39788.

Lloyd's Register
of Shipping

Stem & Sternframe Forgings.

Roque & Sons. Nos 397 & 398.

J. S. Hopper Barges.



"J. C. C. Hopper No 1." (397).

Mdb. Report. No 3629.

"J. C. C. Hopper No 2." (398).

Mdb. Report. No. 3642.



© 2021

Lloyd's Register
Foundation

009050 - 009057 - 0163