

Lloyd's Register of Shipping.

SURVEYS FOR FREEBOARD.

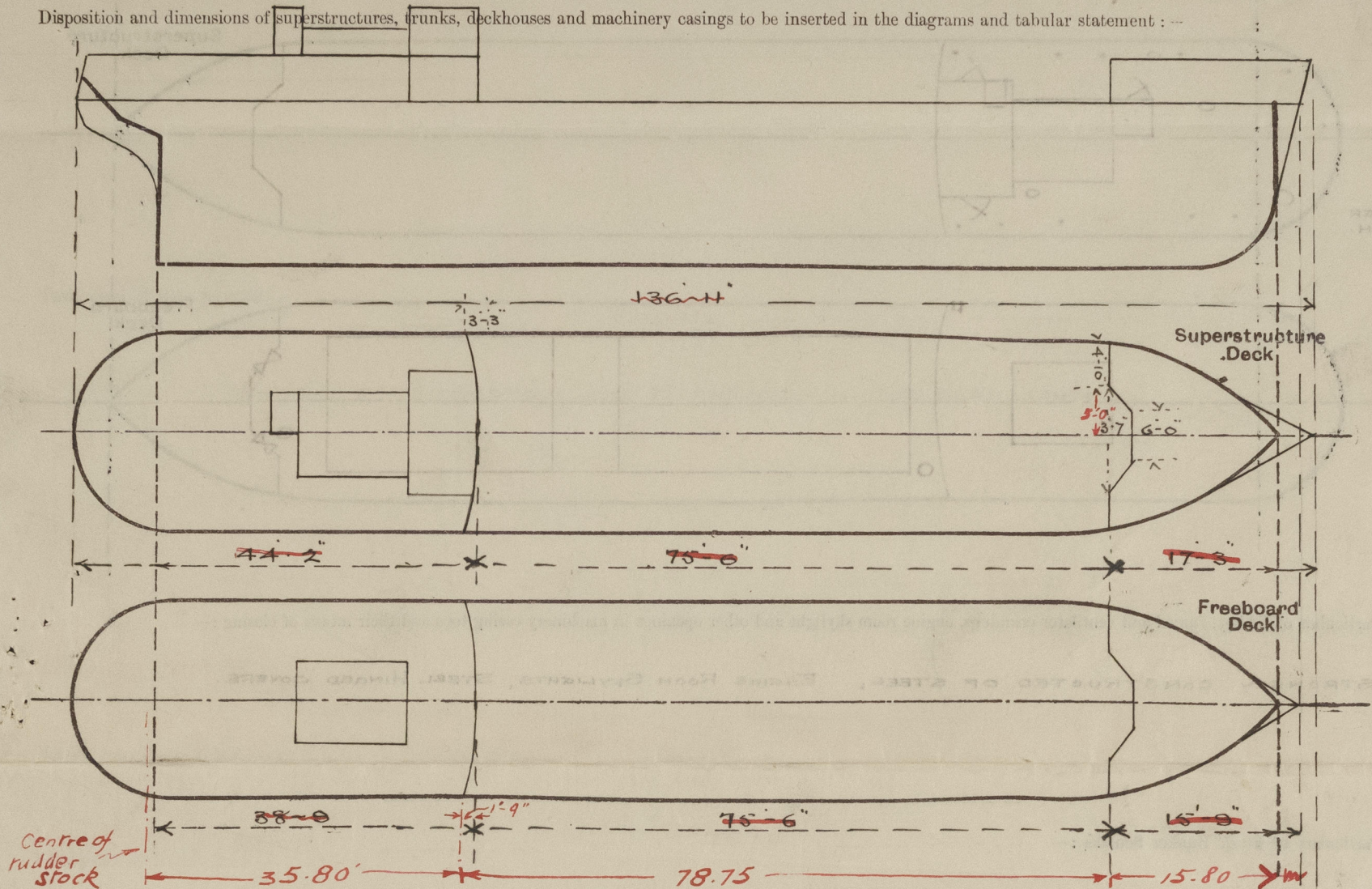
(CONDITIONS OF ASSIGNMENT.)

 Index No. 460.1378
 37408
 (For London Office only).

8 OCT 1943

Ship's Name *Bhattachan* YARD No 311. Port of Survey IPSWICH.
 Official Number *✓ 169754* Surveyor's Signature *Joyson*
 Nationality and Port of Registry BRITISH. Date of Survey 5-10-43.

Disposition and dimensions of superstructures, trunks, deckhouses and machinery casings to be inserted in the diagrams and tabular statement:—



Particulars of Superstructures, Trunks, Casings, Deckhouses.

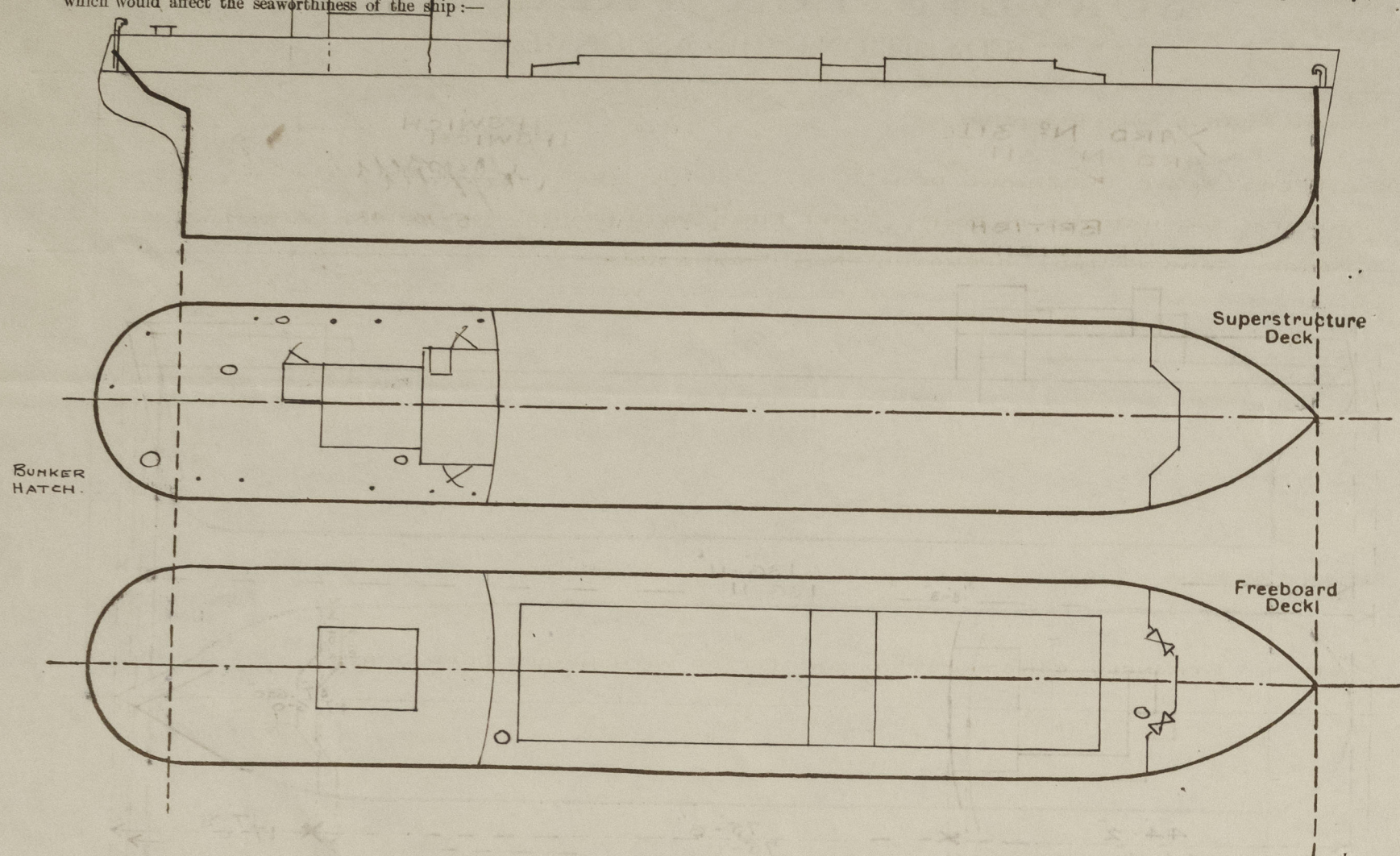
	Coaming	Plating	Stiffeners	Spacing	End Attachments of Stiffeners	Size of Openings	Height of Sills	Height of Casings
Poop Bulkhead ...	30	30	5" x 3" x 3/8"	28" to 32"	BRACKETS TOP & BOTT.	NONE	✓	7' 0"
Raised Quarter Deck Bulkhead ...	✓	✓						
Bridge, After Bulkhead ...	✓							
Bridge, Forward Bulkhead ...	✓							
Forecastle Bulkhead ...	26"	26"	2 1/2" x 2 1/2" x 3/8"	30"	NONE	19" x 46"	12"	7' 0"
Trunk, Aft ...	✓							
Trunk, Forward ...	✓							
Exposed Machinery Casings on Freeboard or Raised Quarter Decks ...	✓							
Exposed Machinery Casings on Superstructure Decks ...	✓							
Machinery Casings within Superstructures not fitted with Class I Closing Appliances ...	30	25	3" x 2 1/2" x 26	31 1/2"	BRACKETS TOP BOTT. TO GIRDER.	21" x 54"	22"	7' 0"
Deckhouses on Flush Deck Ships ...	✓							

Particulars of Closing Appliances (state if capable of being manipulated from both sides).

Poop Bulkhead ...	✓ NO OPENING ✓
Raised Quarter Deck Bulkhead ...	✓
Bridge, After Bulkhead ...	✓
Bridge, Forward Bulkhead ...	✓
Forecastle Bulkhead ...	SHIFTING BOARDS 2" THICK, FITTED IN RIVETED CHANNELS.
Exposed Machinery Casings on Freeboard or Raised Quarter Decks ...	✓
Exposed Machinery Casings on Superstructure Decks ...	✓
Machinery Casings within Superstructures not fitted with Class I Closing Appliances ...	STEEL HINGED DOORS, OPERATED BOTH SIDES.
Deckhouses on Flush Deck Ships ...	✓

PARTICULARS OF PROTECTION TO OPENINGS, ETC.

The following diagrams should be used to indicate the positions of cargo and coaling hatchways, gangway, cargo and coaling ports, ventilators, companionways, etc., which would affect the seaworthiness of the ship:—



Particulars of fiddle, funnel and ventilator coamings, engine room skylight and other openings in machinery casing tops and their means of closing:—

STRONGLY CONSTRUCTED OF STEEL. ENGINE ROOM SKYLIGHTS, STEEL HINGED COVERS.

Particulars of Flush Bunker Scuttles:—

NONE

Particulars of Companionways:—

POOP ACCOMMODATION — STRONGLY CONSTRUCTED OF STEEL.

HINGED STEEL DOORS, OPERATED FROM BOTH SIDES. HEIGHT OF SILL 18" AND 31"

Particulars of Ventilators in exposed positions on freeboard and superstructure decks:—

POOP. 11 - 5" DIAM. MUSHROOM SCREW DOWN VENTS. TO ACCOMMODATION.

2 - 7 " VENTS. TO ALLEYWAY. COAMING 1/2" STEEL. HEIGHT 30".

HOLD 1 - 10" DIAM., 1 - 8 1/2" DIAM. VENTS. COAMING 1/2" STEEL. HEIGHT 30".

CLOSING APPLIANCES — WOOD PLUGS AND CANVAS COVERS.

Particulars of Air Pipes in exposed positions on freeboard, raised quarter, or superstructure decks:—

F.P.T. 2 1/2" DIAM., 18" HEIGHT ABOVE FREEBOARD DECK. (in pressure) WOOD PLUGS AND CANVAS
A.P.T. 2 1/2" " 18" " POOP " COVERS FITTED.

CHATTENDEN

Particulars of Gangway Cargo and Coaling Ports:—

NONE

Particulars of Scuppers and Sanitary Discharge Pipes:—

SCUPPERS ABOVE FREEBOARD DECK

SANITARY DISCHARGES IN POOP, STEEL PIPES WITH BRONZE NON-RETURN STORM VALVE STRONGLY CONSTRUCTED. OPERATED FROM ENGINE ROOM.

Particulars of Side Scuttles:—

POOP STRONGLY CONSTRUCTED AND FITTED WITH HINGED DEAD LIGHTS.

Vertical distance of Sill of lowest Side Scuttle above top of keel 15'-1"

Particulars of Guard Rails:—

FORECASTLE. 3 RAILS, 3'-2 1/2" HIGH. STANCHIONS SPACED 4'-0" APART.

POOP. 3 " 3'-2 1/2" " " 4'-6" "

Particulars of Gangways, Lifelines, etc:—

EFFICIENT LIFELINES STRETCHED BETWEEN POOP BULKHEAD AND FORECASTLE.

Particulars of Freeing Arrangements.

	Length of Bulwark	Height of Bulwark	Size of Freeing Ports	Number each side	Area each side	Rule area each side
After Well	75'-6"	3'-3 1/2"	30" x 15 1/2"	4	16.2 $\frac{1}{2}$	15.8 $\frac{1}{2}$
Forward Well						

State position of each freeing port { After Well:— FROM POOP BULKHEAD 9'-6" - 25'-0" - 42'-0" - 62'-0".
(F. and A. position and height above deck edge) { Forward Well:— HEIGHT ABOVE DECK SIDE. 7".

State whether the freeing ports are fitted with shutters, bars, or rails, and give particulars of such:— STEEL HINGED SHUTTERS - 3.

Additional area where sheer is less than standard. 2 RAILS - 1.

PARTICULARS OF PROTECTION TO OPENINGS, ETC.

HATCHWAYS ON FREEBOARD AND SUPERSTRUCTURE DECKS.

Description of Hatchway	Nº 1	Nº 2	BUNKER HATCH.								
Dimensions of Hatchway	20' x 16'5"	35'7'5" x 16'5"	14' x 12'								
COAMINGS	Height above Deck	...	36	36	12"	✓							
	Thickness	Sides	...	38	38	38							
		Ends	...	38	38								
	Stiffeners	✓	✓								
	Brackets, Stays	✓	✓								
HATCH BEAMS	Number	...	4	5									
	Spacing	...	4'-0"	3'-7"									
	Scantling and Sketch		ANGLES	3 x 3 x .42									
			PLATE	.38									
	Bearing Surface	...	3"	3"									
FORE AND AFTERS	Number	...											
	Spacing	...											
	Unsupported Lengths	...											
	Scantling* and Sketch	...	NONE	NONE									
	Bearing Surface	...											
HATCH COVERS	Material	...	W.P.	W.P.	STEEL HINGED COVER.	✓							
	Thickness	...	2 1/2"	2 1/2"	SECURED WITH HINGED WING BOLTS & NUTS.								
	How fitted	...	F. & A.	F. & A.									
	Bearing Surface	...	3"	3"									
Spacing of Cleats	24"	24"									
Number of Tarpaulins	TWO	TWO									

*Are wood fore and afters steel shod at all bearing surfaces? ✓

Are battens and wedges efficient and in good condition? YES.

Are tarpaulins in good condition and in accordance with rule requirements? YES.

Are lashings provided in accordance with rule requirements? YES.

Particulars of any special features:—

Endorsement at first survey and at surveys for renewal of Certificate:—

The fittings and appliances are in accordance with the particulars shown on this form (or as now modified) and are in good condition.

