

P.L.A. DREDGER "INDIA"  
OIL FUEL CONVERSION  
ARRGT. OF PIPING IN BOILER ROOMS

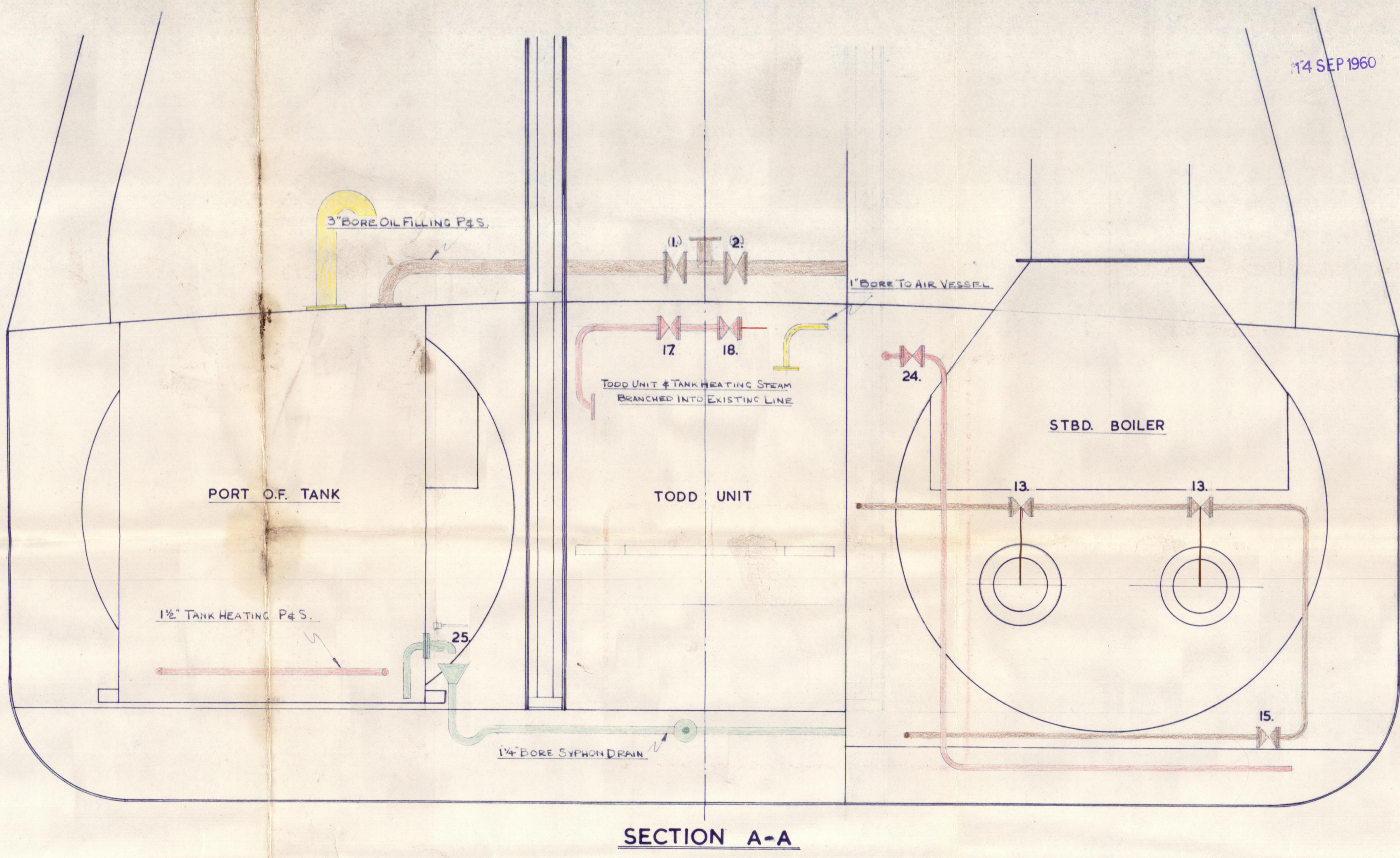
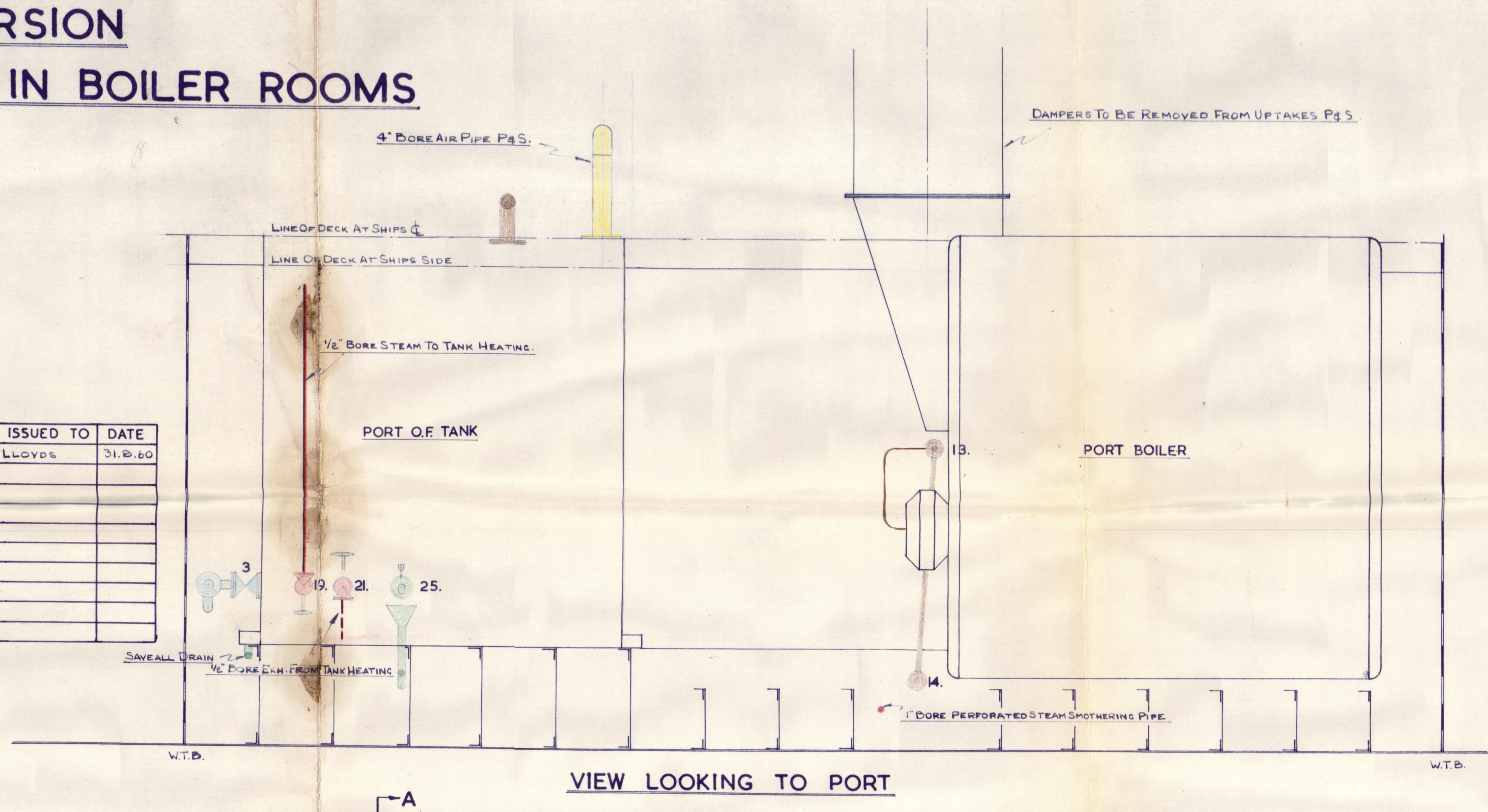
SCALE: 1/2" = 1'-0"

STEAM & EXH. ———  
TANK LINE ———  
AIR & VENT ———  
WASTE OIL ———  
FILLING & OIL TO BURNERS ———

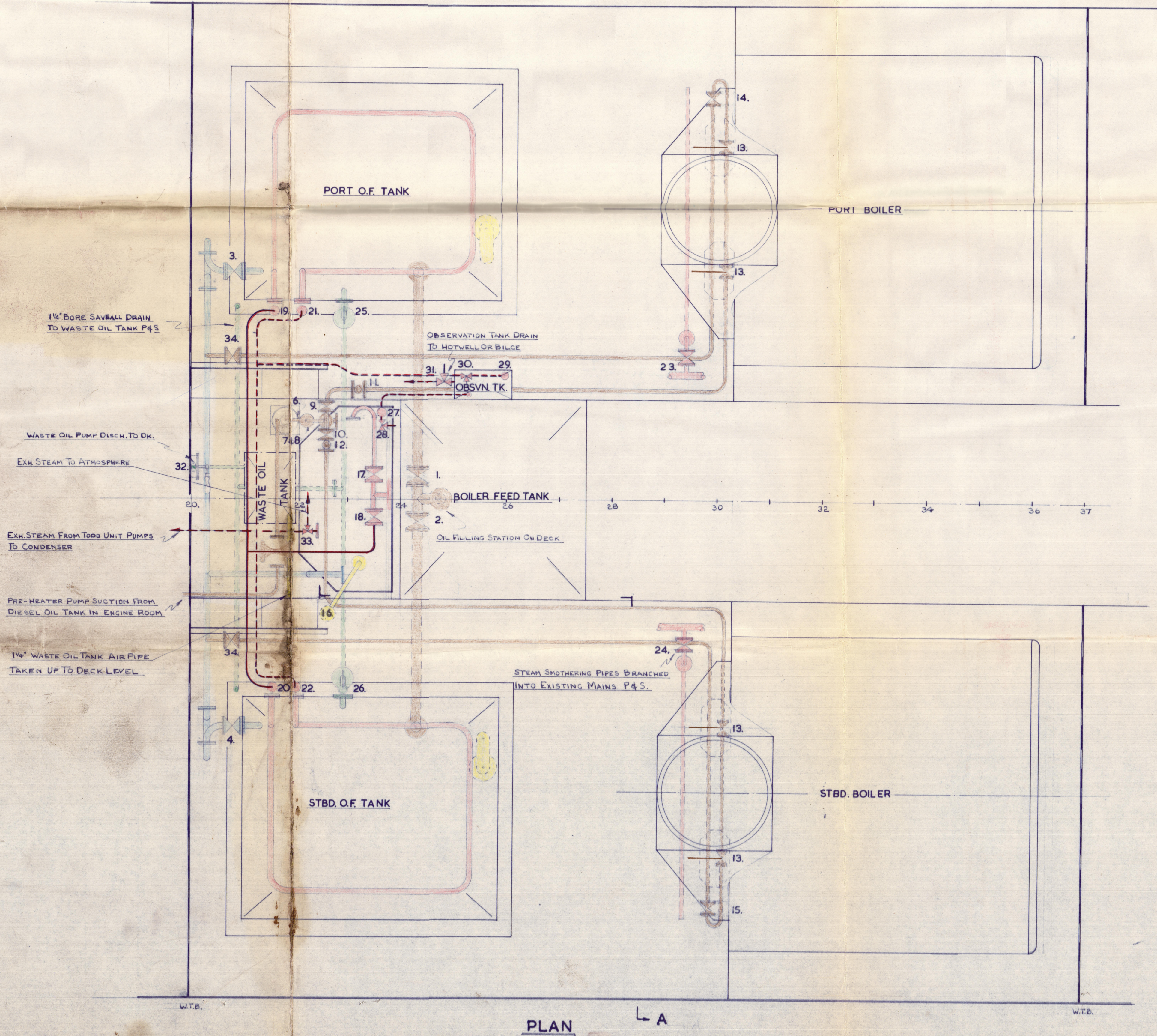
HARLAND & WOLFF  
LIMITED  
SHIP REPAIRING & ENGINEERING WORKS  
NORTH WOOLWICH  
LONDON

DRAWN BY *K. P. ...*  
CHECKED BY  
DATE 31.8.60

ISSUED TO	DATE
LLOYDS	31.8.60



KH/10,844



LIST OF VALVES

Nº	Nº OFF	BORE	DUTY	TYPE	MAT	W.P. (lb/sq")	REMARKS
1.	1	3"	PORT OIL TANK FILLING	SLUICE	C.I.	40	1
2.	1	"	STBD. " "	"	"	"	"
3.	1	1 1/2"	PORT TANK SUCTION	"	"	"	DECK CONTROLLED
4.	1	"	STBD. " "	"	"	"	"
5.	1	1"	LIGHTING UP PUMP SUCTION	S.D.N.R.V.	"	"	FITTED ADJACENT TO DIESEL OIL TANK IN E/R.
6.	1	1/2"	" DISCH. RELIEF VALVE	"	G.M.	"	SUPPLIED & FITTED BY TODD
7.	1	1/2"	PRE-HEATER DISCH. STRAINER	"	C.I.	"	By TODD
8.	1	1/2"	" ISOLATING VALVE	GLOBE	"	"	"
9.	1	1"	MASTER OIL TO PORT BOILER	QUICKCLOSING	"	"	"
10.	1	"	" " STBD. " "	"	"	"	"
11.	1	"	PORT BOILER THERM. POCKET	"	G.M.	"	"
12.	1	"	STBD. " "	"	"	"	"
13.	4	"	BURNER TEE'S & VALVES	"	C.I.	"	"
14.	1	1/2"	OIL RETURN FROM PORT BOILER	S.D.N.R.V.	"	"	"
15.	1	"	" " STBD. " "	"	"	"	"
16.	1	1"	AIR VESSEL	"	"	"	"
17.	1	"	MASTER STEAM TO TODD UNIT	GLOBE	"	150	DECK CONTROLLED
18.	1	"	" " TANK HEATING	"	"	"	"
19.	1	1/2"	STEAM TO PORT " "	R.A.	G.M.	"	"
20.	"	"	" " STBD. " "	"	"	"	"
21.	"	"	EXH. FROM PORT " "	"	"	"	"
22.	"	"	" " STBD. " "	"	"	"	"
23.	"	"	PORT STEAM SMOTHERING	GLOBE	"	"	DECK CONTROLLED
24.	1	"	STBD. " "	"	"	"	"
25.	1	1 1/4"	PORT TANK SYPHON DRAIN	GLOBE	"	40	TO BE OF SELF-CLOSING TYPE.
26.	1	"	STBD. " "	"	"	"	"
27.	1	1/2"	EXH. FROM TODD UNIT HEATER	STEAMTRAP	C.I.	150	"
28.	1	"	" " BY-PASS	3WAYCOCK	G.M.	"	"
29.	1	1/2"	EXH. FROM TANK HEATING	STEAMTRAP	"	"	"
30.	1	"	" " BY-PASS	3WAYCOCK	"	"	"
31.	1	"	OBSERVATION TANK DRAIN	"	"	40	TO BILGE OR HOTWELL
32.	1	3/8"	WASTE OIL PUMP	SEMI-ROTARY	C.I.	"	ORIGINAL WILCOX Nº 2
33.	1	"	EXH. FROM TODD UNIT PUMPS	3WAYCOCK	G.M.	150	TO CONDENSER OR ATMOSPHERE
34.	2	1/2"	OIL RETURN ISOLATING VALVES	S.D.N.R.V.	C.I.	40	"

PROVISION TO BE MADE FOR SOUNDING OIL FUEL TANKS AS PER RULES.

AIR PIPES FROM OIL FUEL TANKS TO BE FITTED WITH BRAZE COVERS.

PUMPS USED FOR BOILER FEEDING PURPOSES NOT TO BE CONNECTED TO BILGE SYSTEM.

ALL PIPES OF LEAD USED FOR BILGE PUMPING IN THE MACHINERY SPACES TO BE REPLACED BY PIPES OF IRON OR STEEL.

The remaining requirements of the Rules for Pumping and Piping to be complied with so far as they are applicable.

The remaining requirements of the Rules for Fire Extinguishing Arrangements to be complied with so far as they are applicable.

13/9/60



DREDGER "INDIA"  
PIPING ARRANGEMENT IN BOILER ROOM

SS/MS "	"
TO ACCOMPANY .....	Rpt. No. ....
Dated .....	
SUBJECT:-	

145267

FORWARDED TO LONDON REPORT NO. ....



© 2020  
Lloyd's Register  
Foundation