

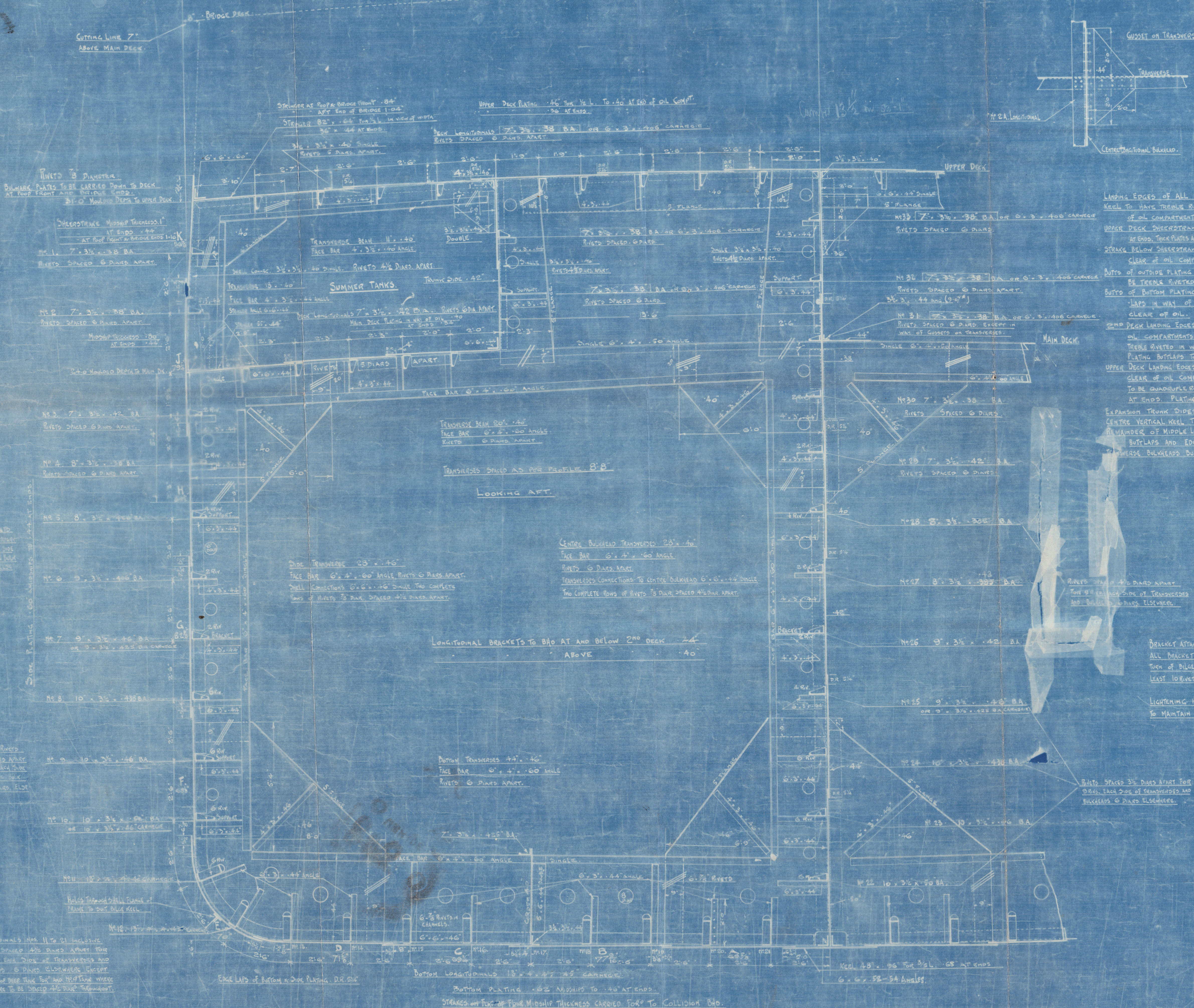
"Soli" ex Silver Shell
Midship Sec.

EQUIPMENT	
1 BOWER ANCHOR (STOCKLESS)	7140 LBS.
" " " "	6622 " "
" " " "	6622 " "
1 STREAM	2436
1 KEEDGE	1036
270 FATHOMS 2 1/2" STUO LINK CHAIN CABLE	
120 " 5" STEEL WIRE TANKAGE	
90 " 4 1/2" " "	
2 x 90 " 7" MANILLA HAWSER	
2 x 90 " 8" " "	
120 " 3 1/2" " "	
120 " 3" " "	
2 x 90 " 2 1/2" STEEL WIRE	
2 x 85 " 3" " "	

IN ADDITION TO RULE

LENGTH 58' 4 1/2" BREADTH MOULDED 53' 1" DEPT. MOULDED TO UPPER D' 31' 0"

NUMERALS	
TRANSVERSE NUMBER	84.08
LONGITUDINAL	340+0
DEPTH TO LENGTH (TO UPPER DECK)	13.2



RIVETING

LINING EDGES OF ALL SHELL PLATING DOUBLE CHAIN RIVETED. KEEL TO HAVE TREBLE RIVETED DOUBLE BUTTSTRAPS AMIDSHIPS. LEAF OF OIL COMPARTMENTS TREBLE RIVETED BUTTSTRAPS. UPPER DECK SHEERSTRAKE QUADRUPLE RIVETED BUTTSTRAPS IN WAY OF OIL TREBLE AT ENDS. THICK PLATES AT ENDS OF BRIDGE & WARP POST DOUBLE TREBLE BV BUTTSTRAPS. STRAKE BELOW SHEERSTRAKE QUADRUPLE RIVETED BUTTSTRAPS AMIDSHIPS. CLEAR OF OIL COMPARTMENTS TREBLE RIVETED BUTTSTRAPS. BUTTS OF OUTSIDE PLATING FROM UPPER TURN OF BILGE TO STRAKE H. TO BE TREBLE RIVETED BUTTSTRAPS FORK & AFT. BUTTS OF BOTTOM PLATING AND BILGE STRAKE TO HAVE QUADRUPLE BUTTSTRAPS IN WAY OF OIL COMPARTMENTS AND TREBLE RIVETED CLEAR OF OIL. SHEER DECK LANDING EDGES DOUBLE CHAIN RIVETED AMIDSHIPS. CLEAR OF OIL COMPARTMENTS SINGLE RIVETED. STRINGER BUTTSTRAPS TO BE TREBLE RIVETED IN WAY OF OIL COMPARTMENTS. DOUBLE RIVETED AT ENDS. PLATING BUTTSTRAPS TO BE DOUBLE RIVETED FORK & AFT. UPPER DECK LANDING EDGES DOUBLE CHAIN RIVETED. LAPS AMIDSHIPS. CLEAR OF OIL COMPARTMENTS SINGLE RIVETED. STRINGER BUTTSTRAPS TO BE QUADRUPLE RIVETED IN WAY OF OIL COMPARTMENTS TREBLE RIVETED AT ENDS. PLATING BUTTSTRAPS TO BE DOUBLE RIVETED FORK & AFT. EXPANSION TRUNK SIDES DOUBLE RIVETED BUTTSTRAPS AND EDGE LAPS. CENTRE VERTICAL KEEL TREBLE RIVETED BUTTSTRAPS. REMAINDER OF MIDDLE LINE BULKHEAD PLATING DOUBLE CHAIN RIVETED BUTTSTRAPS AND EDGE LAPS. TRANSVERSE BULKHEADS BUTTSTRAPS AND EDGE LAPS DOUBLE CHAIN RIVETED.

BRACKET ATTACHMENTS TO BE FINISHED AS FOLLOWS: ALL BRACKET ATTACHMENTS TO PLAT. OF BOTTOM AND TO UPPER TURN OF BILGE, AND ALL OTHER BRACKETS WHICH REQUIRE AT LEAST TWO RIVETS IN EITHER ARM. LIGHTENING HOLES TO BE AT LEAST 8" CLEAR OF NOBLES AND TO MAINTAIN SAME RELATIVE POSITION TO SHELL AS SHOWN ON PLAN.

Soli
ex Silver Shell
Pha 2007

DIMENSIONS
LENGTH 58' 4 1/2" BREADTH MOULDED 53' 1" DEPT. MOULDED TO UPPER D' 31' 0"

HARLAN & HOLLINGSWORTH CORP. WILMINGTON DEL.		
MIDSHIP TRANSVERSE. (LLOYDS)		
MADE BY THAMES	SCALE 1/2" INCH = 1 FOOT	DATE 12/29/14
CHECKED 434	CONTRACT NAME ANGLO SAXON OIL TANKER No 1	CHANGE NO.
434		Lloyd's Register Foundation