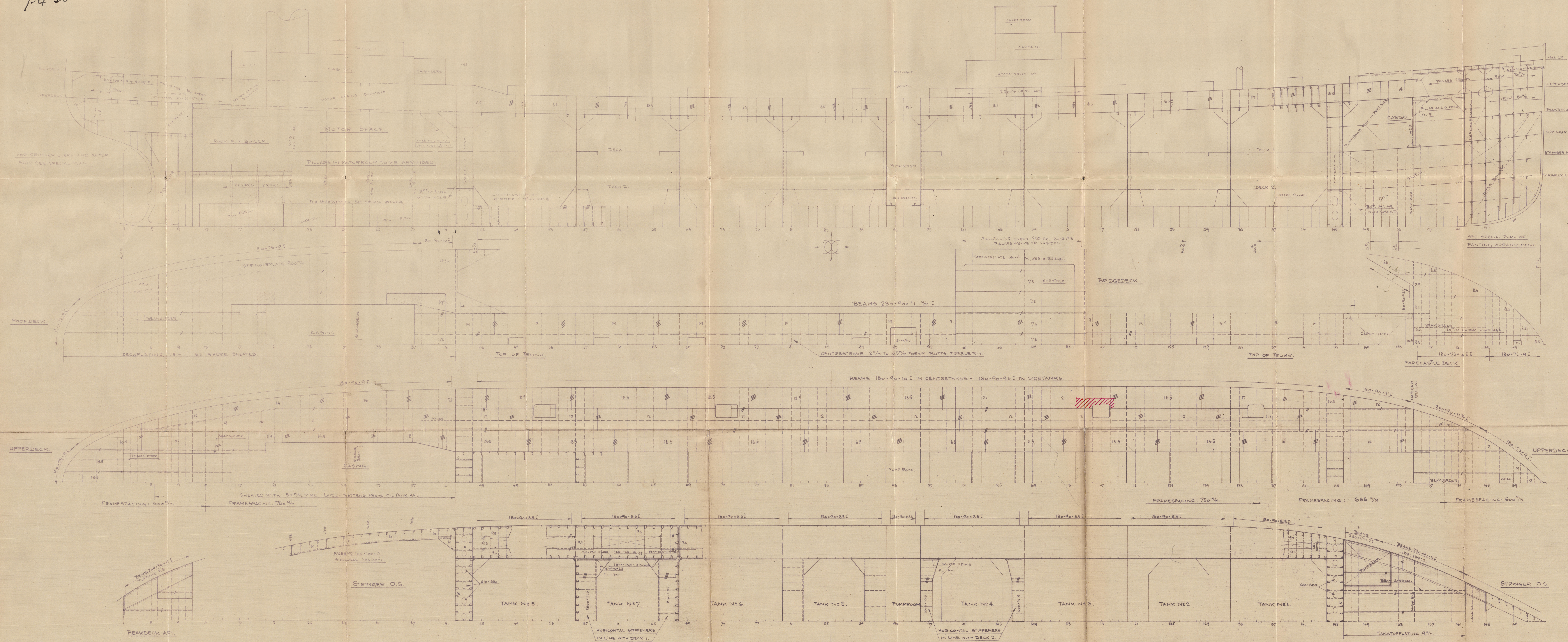


7-4-30

BUILDING N° 43.- PROFILE AND DECK PLANS.- SCALE 1:100.



DIMENSIONS:

LENGTH OUTSIDE STEM AND STERNPOST	123.924 MTR. = 406'7"
BREADTH MOULDED	16.611 MTR. = 54'6"
DEPTH MOULDED TO MAINDECK	9.830 MTR. = 32'3"
HEIGHT OF POOP, BRIDGE AND FORECL.	2.285 MTR. = 7'6"

CLASS: LLOYDS REGISTER * 100 A.1. CARRYING PETROLEUM IN BULK.
MATERIAL: STEEL.

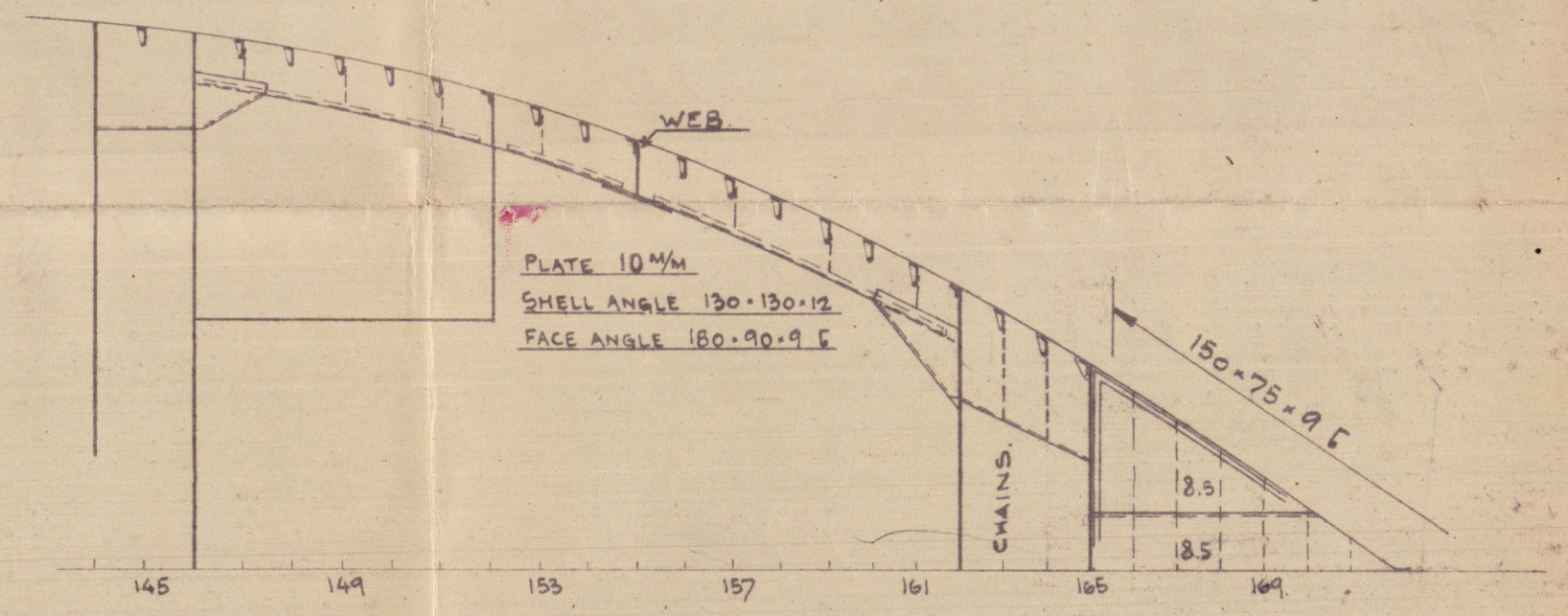
SCANTLING NUMBERS IN MTR.

FIRST LONGITUDINAL N° L.D.	123.924 x 9.830 = 1218.17
SECOND " " L(B.D.)	123.924 (16.611 x 9.830) = 3276.67
L = 123.924	12.6 - TO TOP OF TRUNK
B = 486.88	11.65 - TO TOP OF TRUNK

SCANTLING NUMBERS IN FEET

FIRST LONGITUDINAL N° L.D.	406.58 x 32.25 = 13112.21
SECOND " " L(B.D.)	406.58 (54.56 x 32.25) = 85270.82
L = 406.58	12.6 - TO TOP OF TRUNK
B = 486.88	38.17 - TO TOP OF TRUNK

ALL BULB SECTIONS ARE BASED ON THE 1924 STANDARDS.

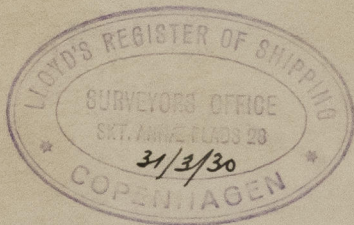


5-4-30

— PROFILE & DECKS —

— MOTOR TANKER No 43 —

— OENSE SHIPYARD. —



M/s. "BATUMSKY SOVIET" of Trapse.
Cym. Rpt. No 8694.



© 2020

Lloyd's Register
Foundation

008964-008992-0197