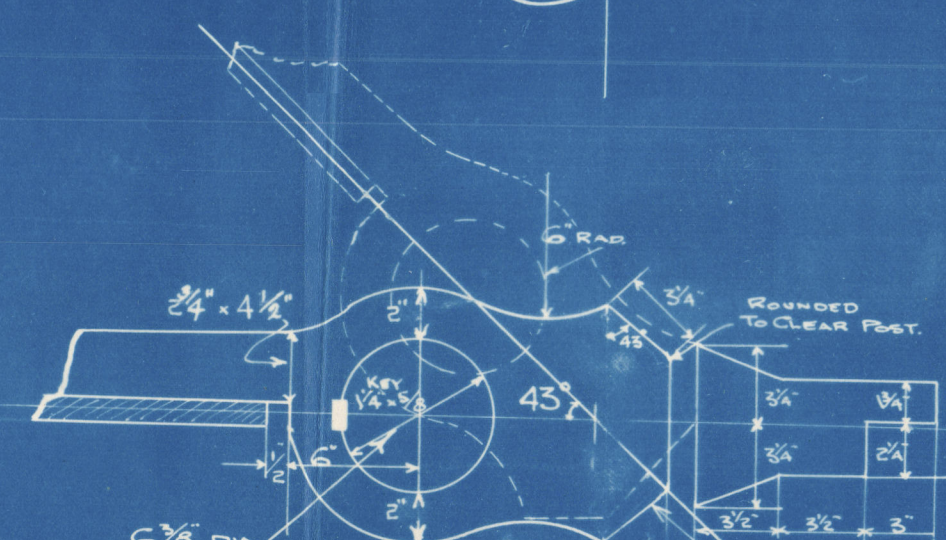
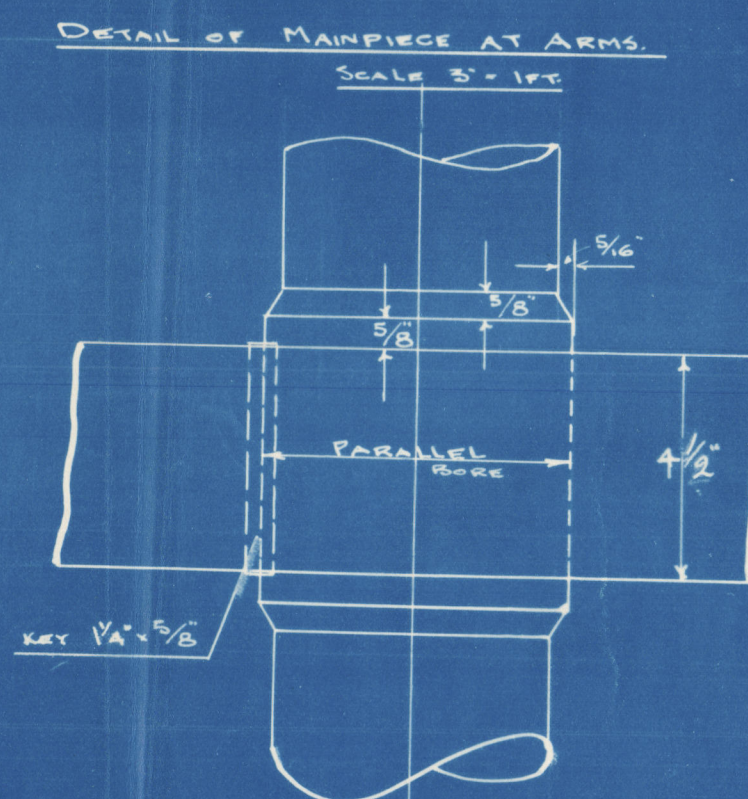


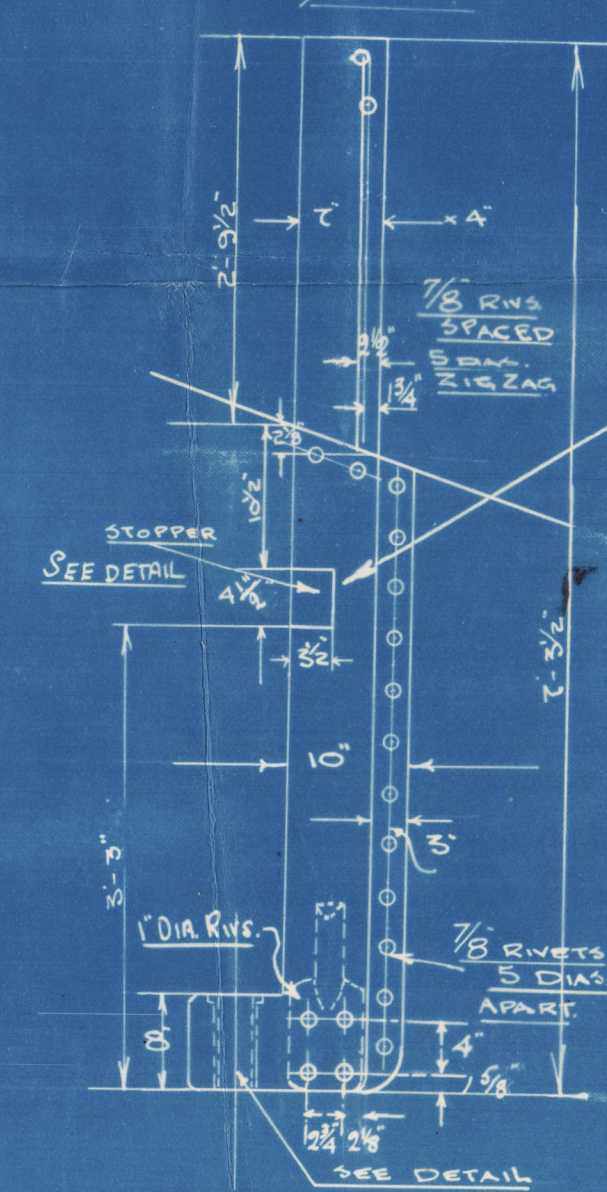
RUDDER AREA = 45.4 SQ. FT.
C.G. AFT OF CR. LINE OF PINTLES 1.82 FT.
A x D = 82.9.
SPEED 10 KNOTS.



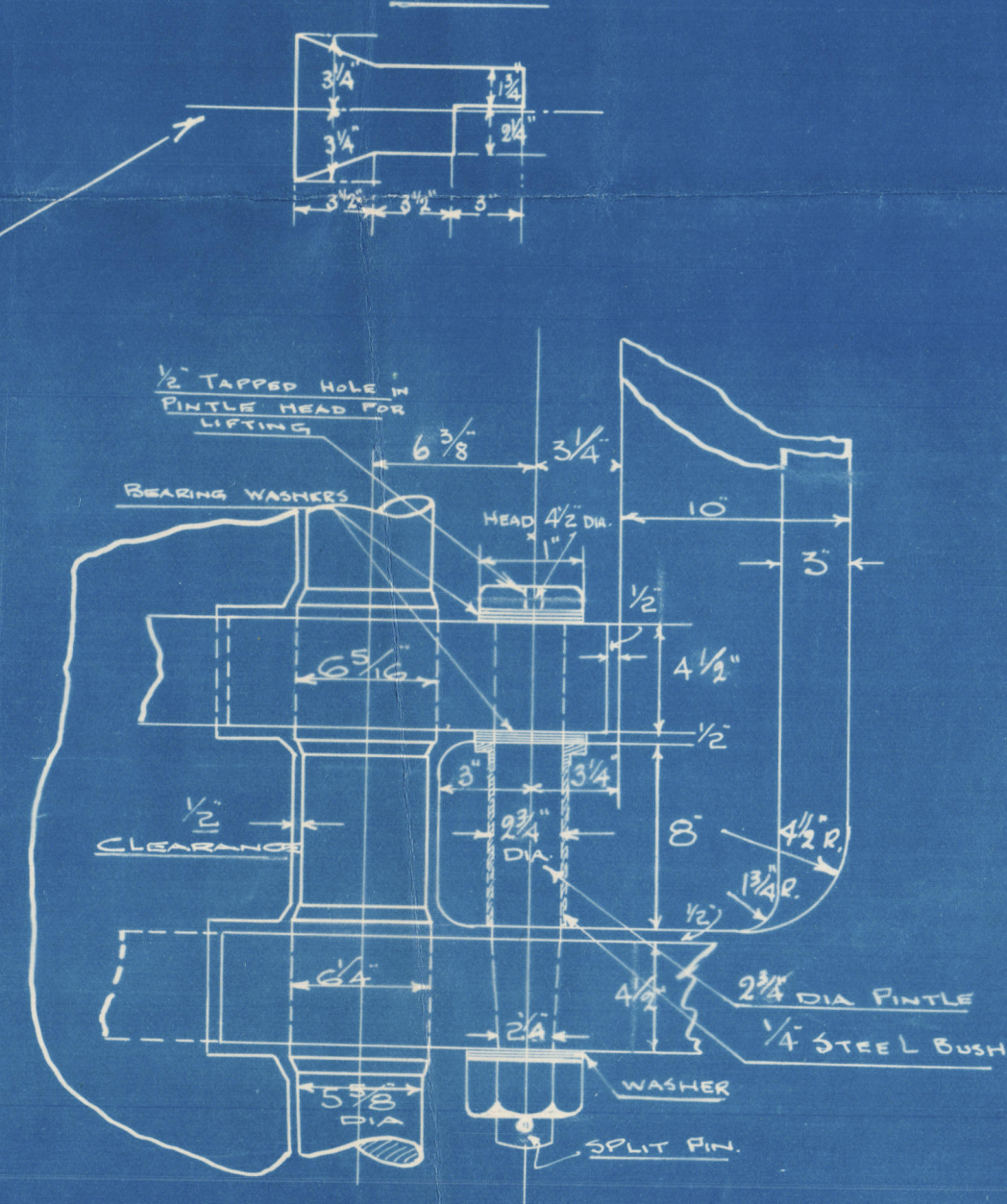
DETAIL OF STOPPER
SCALE $1\frac{1}{2}' = 1 \text{ FT.}$

NOTE! THIS PART OF ARM TO
BE CAREFULLY CUT OR CHIPPED
TO ALLOW RUDDER TO GO OVER
TO 43° ALSO TO HAVE A BEARING
OF 34° AGAINST POST.

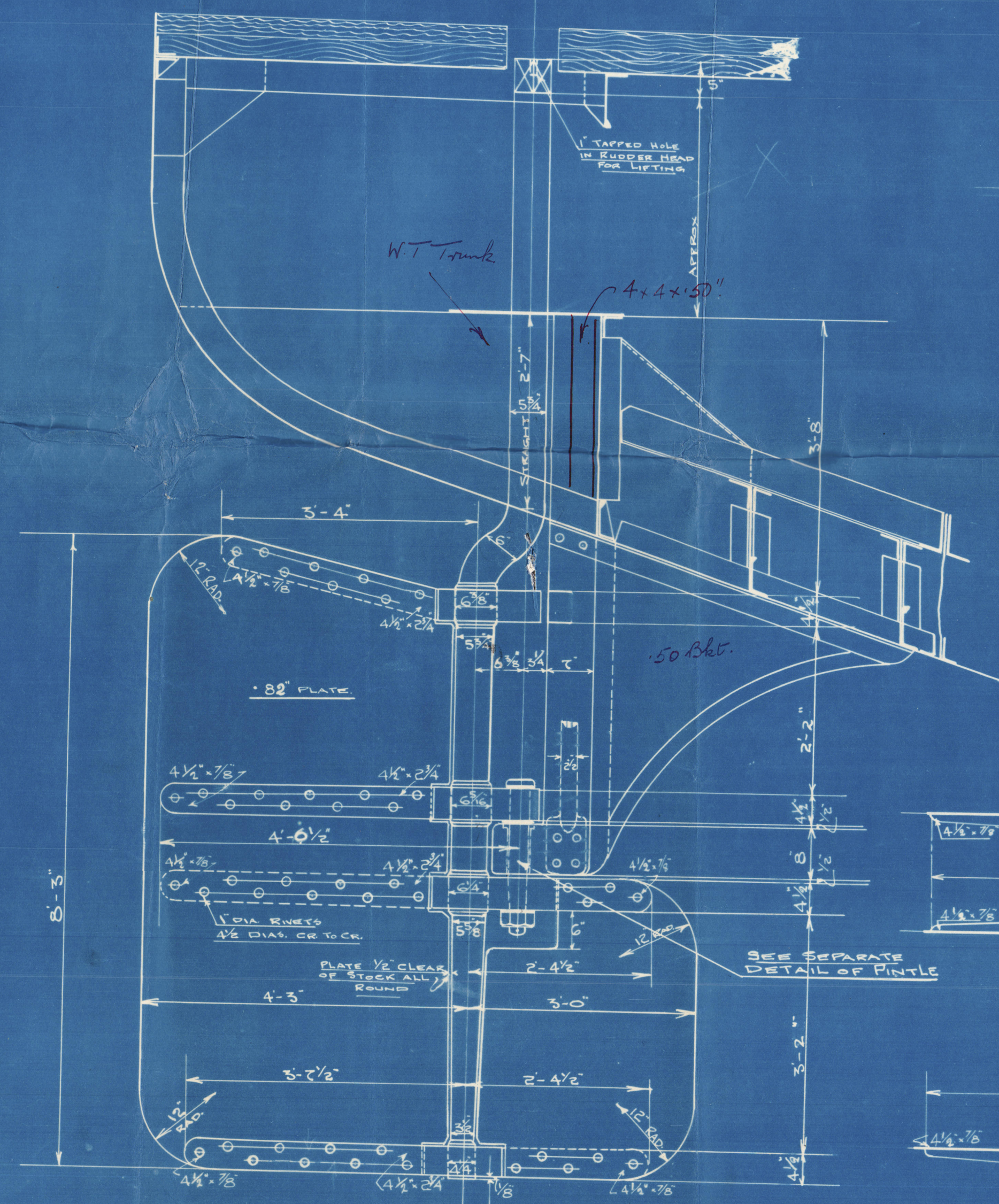
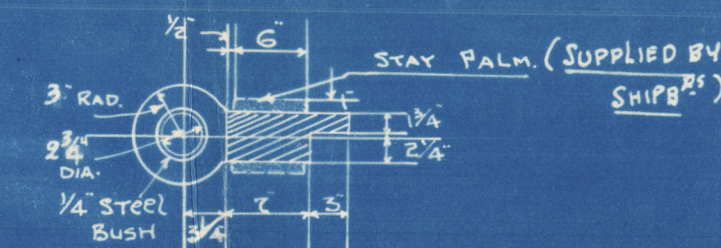
Nº 573.
PLAN OF
STERN FRAME
3/4" SCALE



DETAIL OF STOPPER
1 1/2" = 1 FOOT.

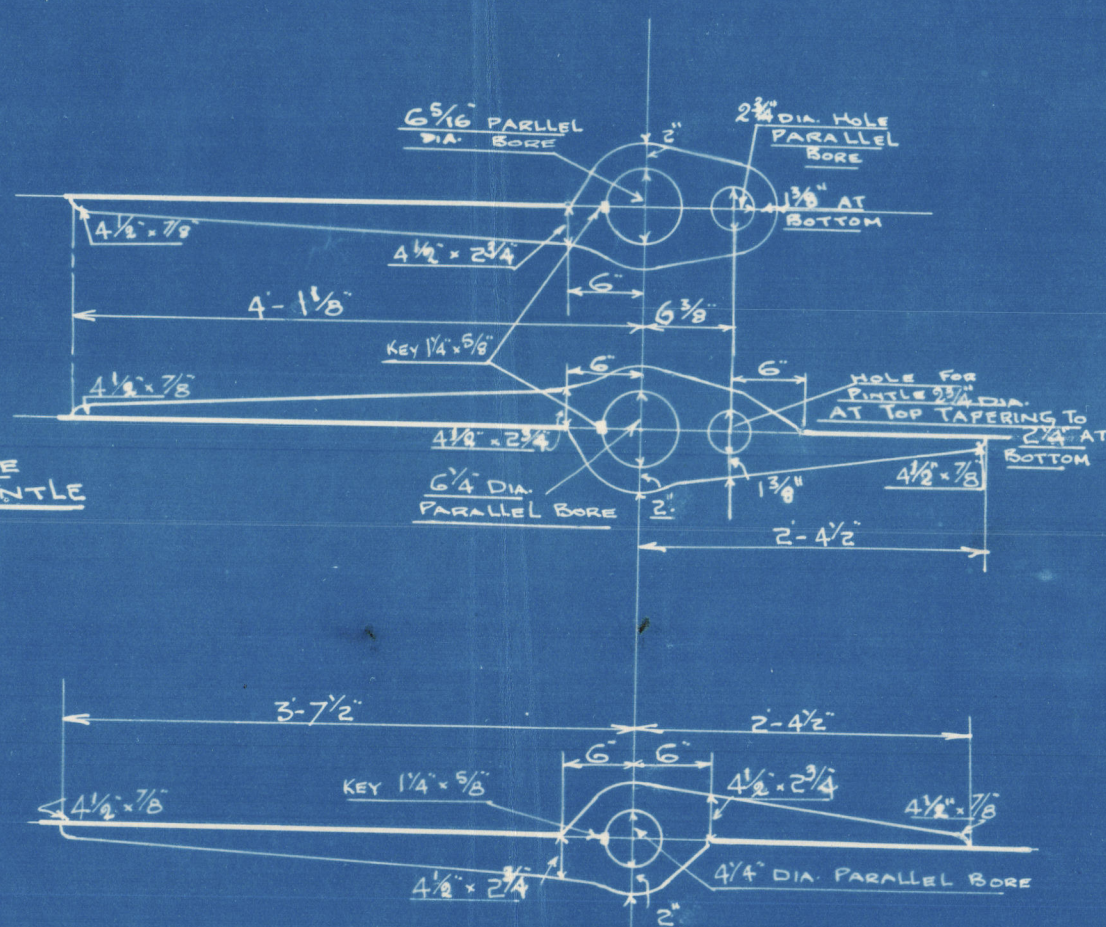


DETAIL OF PINTLE
SCALE 1 1/2" = 1 FT.



PLAN OF RUDDER
SCALE $\frac{3}{4}$ " = 1 FT.

N° 573



DETAIL OF ARMS
SCALE $\frac{3}{4}" = 1'0"$

W 3

Hawthorn Leslie 573

Stern frame & Rudder.

S/S. "NORTHUMBRIAN"

NEWCASTLE ON TYNE.

Report No. 85624



© 2020

Lloyd's Register
Foundation

008964-008972-0165