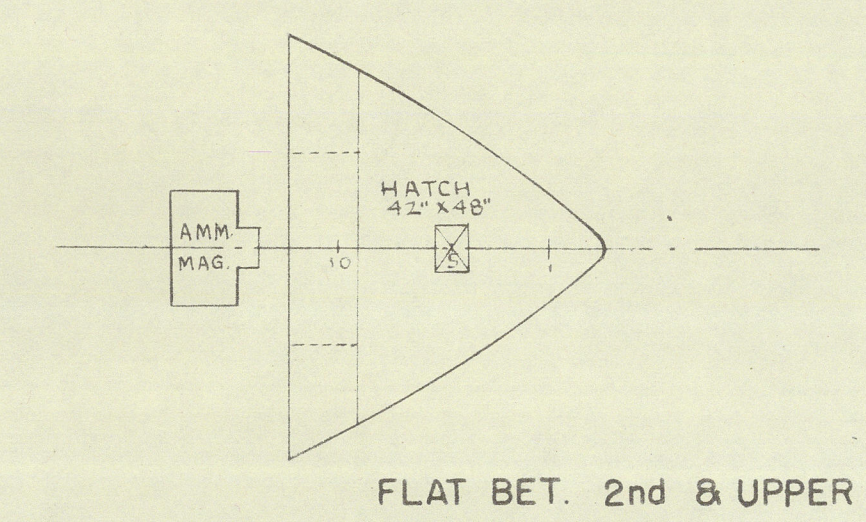


ABBREVIATION
TE - TUNNEL ESCAPE
TH - TRIMMING HATCH
DW - DRAIN WELL
SW - STEAM WINCH
V - VENT TRUNK
C - COFFERDAM



STORES		
STORE ROOM	CU. FT.	
BOS'N STORES ON 2nd DECK F.P. TO FR. 12	3034	
BOS'N STORES ON FLAT BET. 2nd & UPP. DKS	3492	
CABIN STORES 2nd DK. (FRS. 88 TO 106)	4329	
LINEN LOCKER	585	
BONDED STORES	186	
REFRIGERATED STORES		
MEAT	801	
FISH	173	
VEGETABLES	768	
DAIRY	176	
FIXED BALLAST		
LOCATION	WEIGHT	
HOLD NO. 2 GRAVEL	67.8	
HOLD NO. 3 "	48.2	
HOLD NO. 4 "	38.0	
HOLD NO. 5 "	37.2	
VOID SPACE FRESH WATER	95.0	
TOTAL		286.2 TONS

NATIONAL DEFENSE FEATURES	
ITEMS	WEIGHT
PLASTIC ARMOR (HOUSE)	21.21
GUN SHIELDS	8.77
GUN PLATFORMS	28.22
AMMUNITION STOWAGE	_____
ADDITIONAL QUARTERS FOR GUNNERS	_____
LIFE RAFTS SKIDS & FLOATS	11.00
SMOKE FLOATS	1.0
BARRAGE BALLOON INSTALLATION	5.80
ARMAMENT	28.71
ENGINE GENERATOR FOR 5" 38 CAL. GUN	5.10
DEGAUSSING	12.19
TOTAL 122.00	

CARGO		GRAIN CAP.	BALE CAP.
HOLD No. 1	C.F.	C.F.	
HOLD TWEEN DECKS	41257	36083	
	43143	39565	
HOLD No. 2			
HOLD TWEEN DECKS	98860	92008	
	27970	23904	
HOLD No. 3			
HOLD TWEEN DECKS	68459	59793	
	27970	23904	
HOLD No. 4			
HOLD TWEEN DECKS	58841	52574	
	35277	29689	
HOLD No. 5			
HOLD TWEEN DECKS	58620	51571	
	34570	30864	
DEEP TANKS	No. 1 P.	3639	2729
"	No. 1 S.	3639	3004
"	No. 2 P.	7473	5294
"	No. 2 S.	7473	5578
"	No. 3 P.	13674	12506
"	No. 3 S.	13188	12024
TOTAL		562827	499816

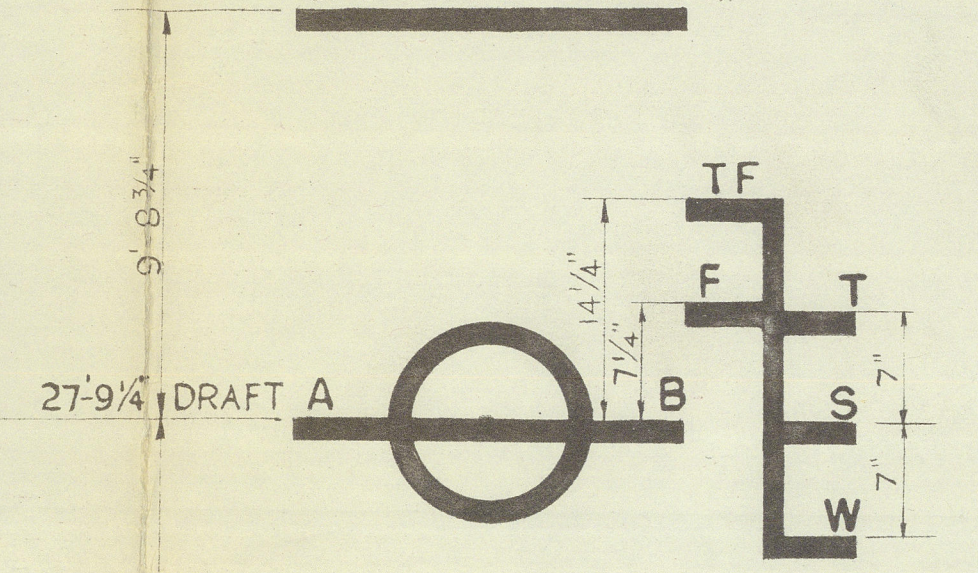
WATER BALLAST		CU. FT.	TONS @ 35 C.F.
TANK			
FORE PEAK		5073	145
WATER BALLAST	No. 1	5029	144
"	No. 2 P.	5967	170
"	No. 2 S.	5967	170
"	No. 3 P.	4400	126
"	No. 3 S.	4365	125
"	No. 4 P.	4391	125
"	No. 4 S.	4391	125
"	No. 5	4118	118
AFTER PEAK - CULINARY WATER		5438	155
DEEP TANKS	No. 1 P.	3973	114
"	No. 1 S.	3973	114
"	No. 2 P.	7340	210
"	No. 2 S.	7340	210
"	No. 3 P.	13540	387
"	No. 3 S.	13065	373
TOTAL		98370	2811

FRESH WATER		GAL'S	TONS @ 36 C.F.
TANK			
RESERVE FEED	No. 4 P.	17855	66
"	No. 4 S.	17855	66
FRESH WATER	FR. 108-113 P.	7541	28
"	FR. 108-113 S.	7541	28
TOTAL		50792	186

FUEL OIL		GAL'S	TONS @ 37.3 C.F.
TANK			
FUEL OIL TANK	No. 1	36863	132
"	No. 2 P.	43742	157
"	No. 2 S.	43742	157
"	No. 3 P.	32251	116
"	No. 3 S.	31955	115
"	No. 4 P.	32185	116
"	No. 4 S.	32185	116
"	No. 5	30183	108
TOTAL		283106	1017
F.O. SETTLING TANK	FR. 88-96P	14083	51
"	FR. 88-96S	14083	51
TOTAL		28166	102
CARGO OIL OR FUEL OIL			
DEEP TANK	No. 1 P.	29126	105
"	No. 1 S.	29126	105
"	No. 2 P.	53806	193
"	No. 2 S.	53806	193
"	No. 3 P.	99257	356
"	No. 3 S.	95772	344
TOTAL		360893	1296
TOTAL (ALL F.O.)		672165	2415

PRINCIPAL DIMENSIONS
L.O.A. 441'-7 1/2"
L.B.P. (25'-3 1/4" W.L.) 416'-0"
BREADTH, MLD 56'-10 3/4"
BREADTH, EXTREME 57'-1 1/4"
DEPTH TO UPPER DECK, MLD 37'-4"
DEPTH TO SECOND DECK, MLD 28'-7"
DRAFT 27'-9 1/4"
CAPACITIES & TYPES OF WINCHES
"12" DBL. GEARED WINCHES FOR 5 & 30 TON BOOMS
9"x12" WINCH FOR 50 TON BOOM
HEIGHTS OF MASTS
FIXED MAST ABOVE DECK FOREMAST 40'-3 1/8"
FR. 65 42'-11 3/16"
FR. 134 42'-2 3/16"
TELESCOPIC " " " FR. 68 62'-11 3/16"
FR. 134 62'-2 3/16"
ENGINE
DIRECT ACTING CONDENSING THREE CYLINDER TRIPLE
EXPANSION ENGINE DEVELOPING 2500 I.H.P. AT 76 R.P.M.
BOILERS
TWO MAIN BOILERS OF THE CROSS DRUM SECTIONAL
SINUOUS HEADER STRAIGHT TUBE TYPE FITTED WITH
SUPER HEATERS, BURNING BUNKER 'C' FUEL OIL

DEADWEIGHT SCALE			
DEADWEIGHT S.W.	DRAFT	DISPLACEMENT S.W.	TONS PER 1000
11000	28	14257	49
10548	27	14000	48.5
10000	26	13000	48
9000	25	12000	47.5
8000	24	11000	47
7000	23	10000	46.5
6000	22	9000	46
5000	21	8000	45.5
4000	20	7000	45
3000	19	6000	44.5
2000	18	5000	44
1000	17	4000	43.5
0	16	3000	43
	15	2000	42.5
	14	1000	42
	13	0	41.5
	12		
	11		
	10		
	9		
	8		



NOTES
1 - THE LIGHT WEIGHT OF THE SHIP GIVEN INCLUDES GUNS & BALLAST, BUT NO AMMUNITION.

DESIGN NO. EC2-S-C1

UNITED STATES MARITIME COMMISSION
EMERGENCY SHIP CONSTRUCTION DIVISION

CAPACITY PLAN

SCALE 1/16"=1'-0" DATE

DRAWN BY DK APPROVED BY

TRACED BY APPROVED BY

CHECKED BY R.H. - L.F.M. APPROVED BY

BETHLEHEM-FAIRFIELD SHIPYARD, INCORPORATED
FAIRFIELD BALTIMORE, MD.

M.C.E. PLAN NO. 14-63 S29-1-1
301-312

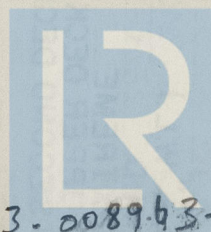
APPROVED AS NOTED IN
M.C.E. LETTER DATED A.B.S. LETTER DATED
M.C.E. FILE NO. M.C.E. FILE NO.
BY BY

008953-008963-0188

"VIKDAL" ✿

Capacity plan.

3



© 2020

Lloyd's Register
Foundation

00 8953.008943-0188