

N^{os} 1662-64-66-68-70-72-74 & 1676

RUDDER & STERNFRAME

SCALE 1" = ONE FOOT

$$A \times D = 27.5 \text{ FT} \times 2.17 = 59.79 = 4 \frac{1}{8} \text{ DIA STOCK}$$

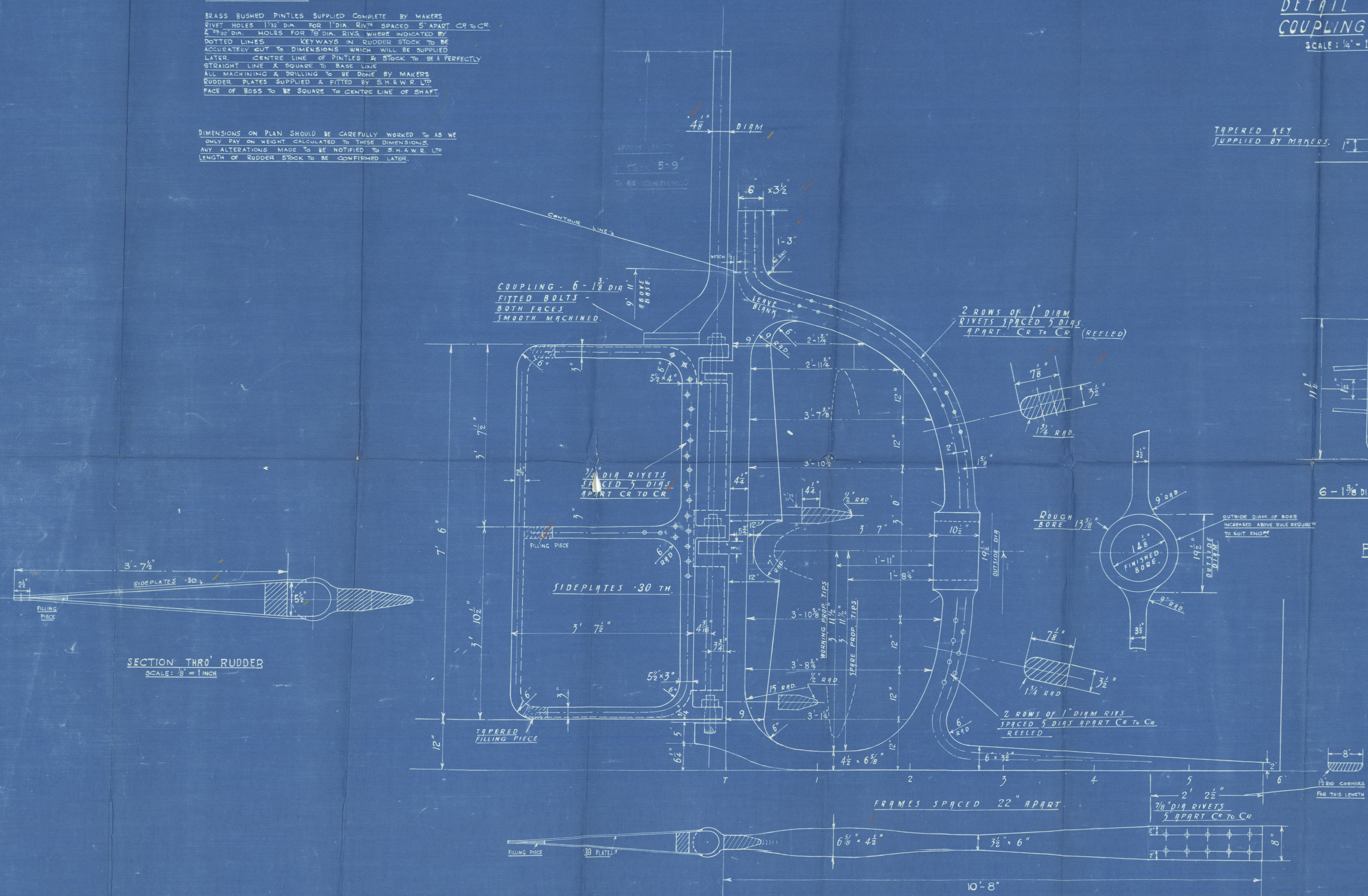
To PASS LLOYDS SURVEY & TESTS

STERNFRAME : FORGING IN ONE PIECE
RUDDER STOCK : FORGING
RUDDER FRAME : FORGING

BRASS BUSHED PINTLES SUPPLIED COMPLETE BY MAKERS
RIVET HOLES 1 1/2" DIA. FOR 1" DIA. RIVTS SPACED 5" APART CR TO CR
2 1/2" DIA. HOLES FOR 2" DIA. RIVTS WHERE INDICATED BY
DOTTED LINES. KEYWAYS IN RUDDER STOCK TO BE
ACCUATELY CUT TO DIMENSIONS WHICH WILL BE SUPPLIED
LATER. CENTRE LINE OF PINTLES & STOCK TO BE A PERFECTLY
STRAIGHT LINE & SQUARE TO BASE LINE.
ALL MACHINING & DRILLING TO BE DONE BY MAKERS
RUDDER PLATES SUPPLIED & FITTED BY S.H.K.W.R. LTD
FACE OF BOSS TO BE SQUARE TO CENTRE LINE OF SHAFT.

DIMENSIONS ON PLAN SHOULD BE CAREFULLY WORKED TO AS WE
ONLY PAY ON WEIGHT CALCULATED TO THESE DIMENSIONS.
ANY ALTERATIONS MADE TO BE NOTIFIED TO S.H.K.W.R. LTD
LENGTH OF RUDDER STOCK TO BE CONFIRMED LATER.

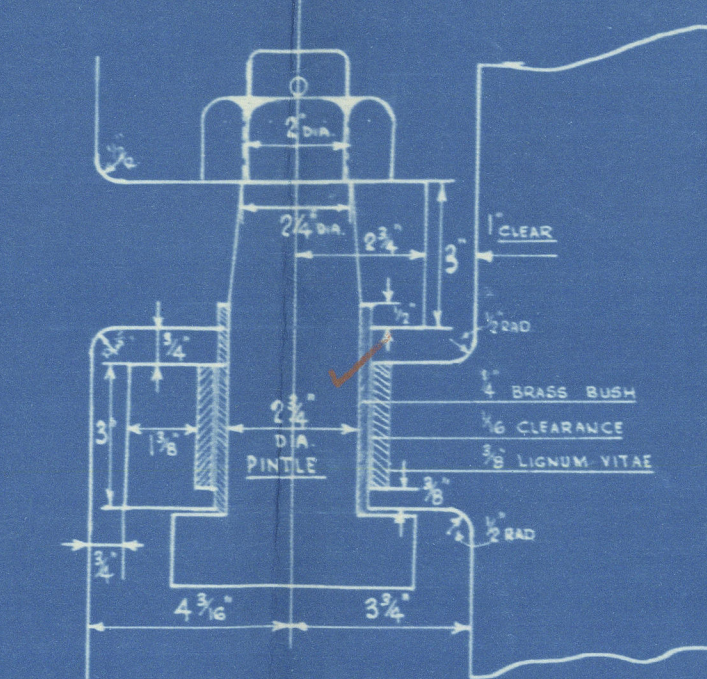
DIMENSIONS: LENGTH 180'-0" PP x 40'-0" B.M.L.D x 15'-0" D.M.L.D



DETAIL OF COUPLING

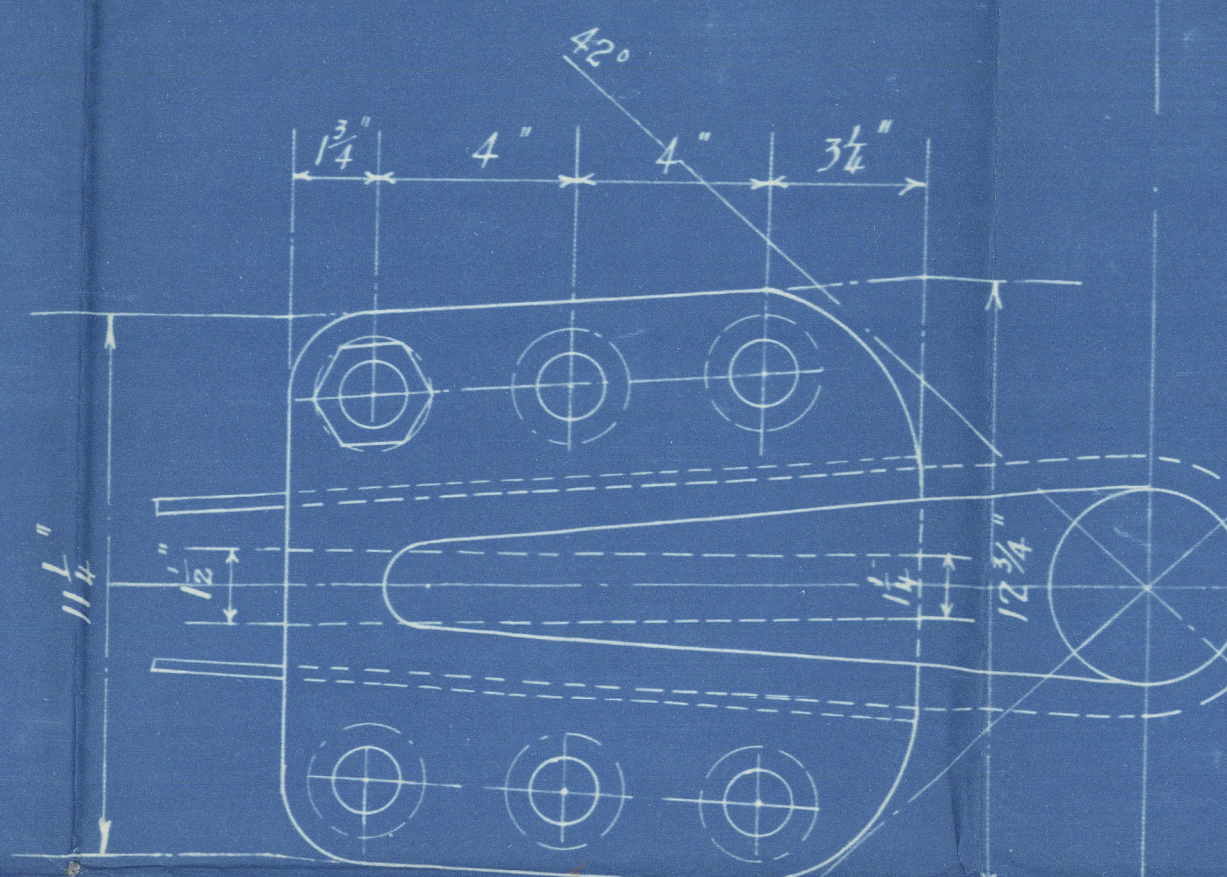
SCALE: 1/4" = 1 INCH

TAPERED KEY
SUPPLIED BY MAKERS.



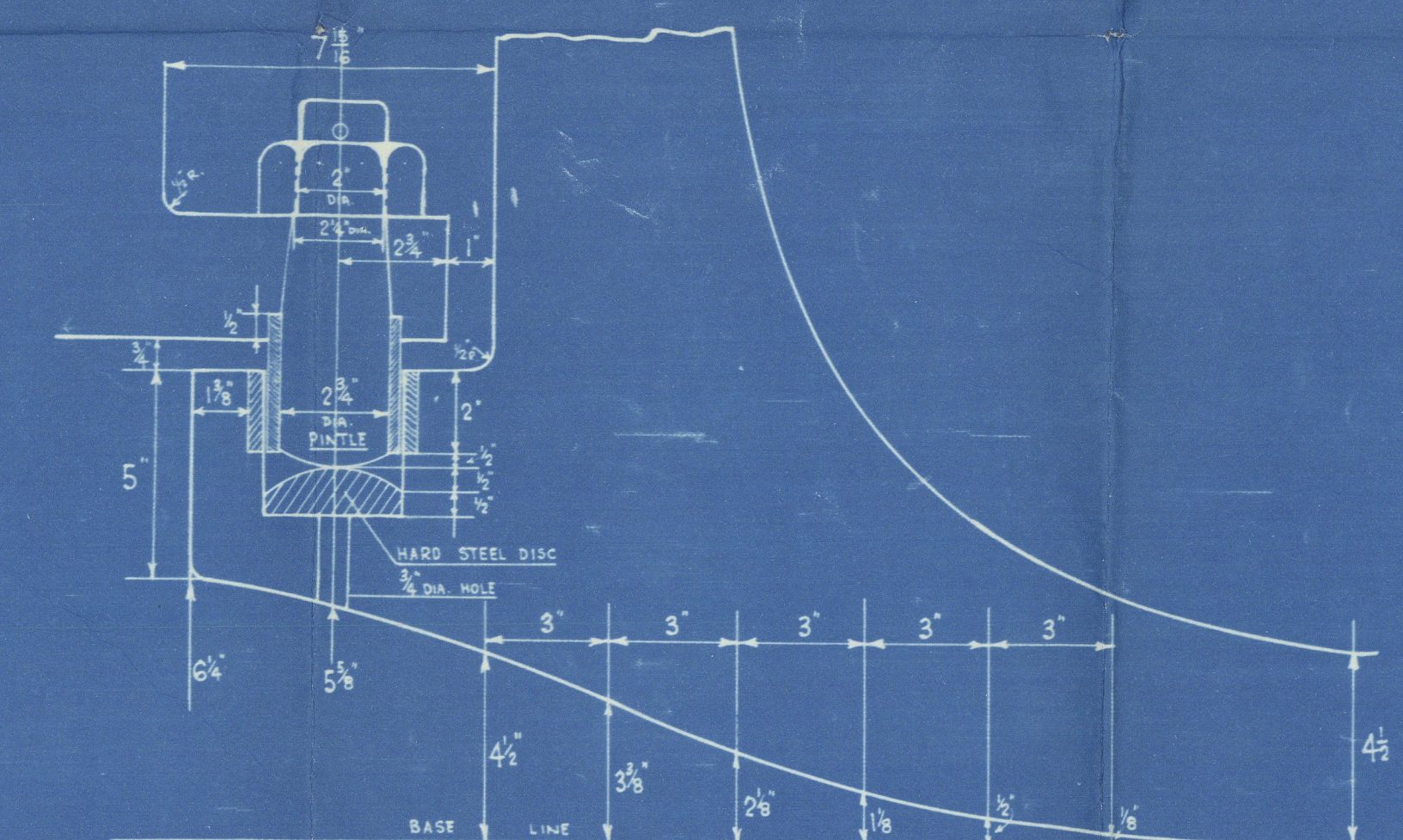
DETAIL OF TOP PINTLES

SCALE: 1/2" = 1 INCH



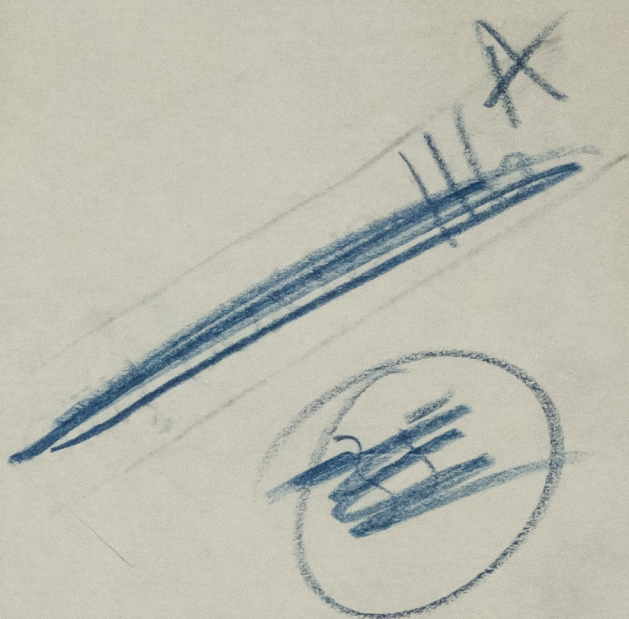
PLAN OF COUPLING

SCALE: 1/4" = 1 INCH



DETAIL OF BOTTOM PINTLE

SCALE: 1/4" = 1 INCH



Swan. Hunter's

1662/4/6/8/70/2/4/6

Rudder + Sternframe

"ECEABAT"



© 2020

Lloyd's Register
Foundation

00 8953 - 00 8963 - 0102