

S. S. "ECEABAT."
MIDSHIP SECTION.

DIMENSIONS 180' PP x 40'-0" B.MLD x 15'-0" D.MLD.

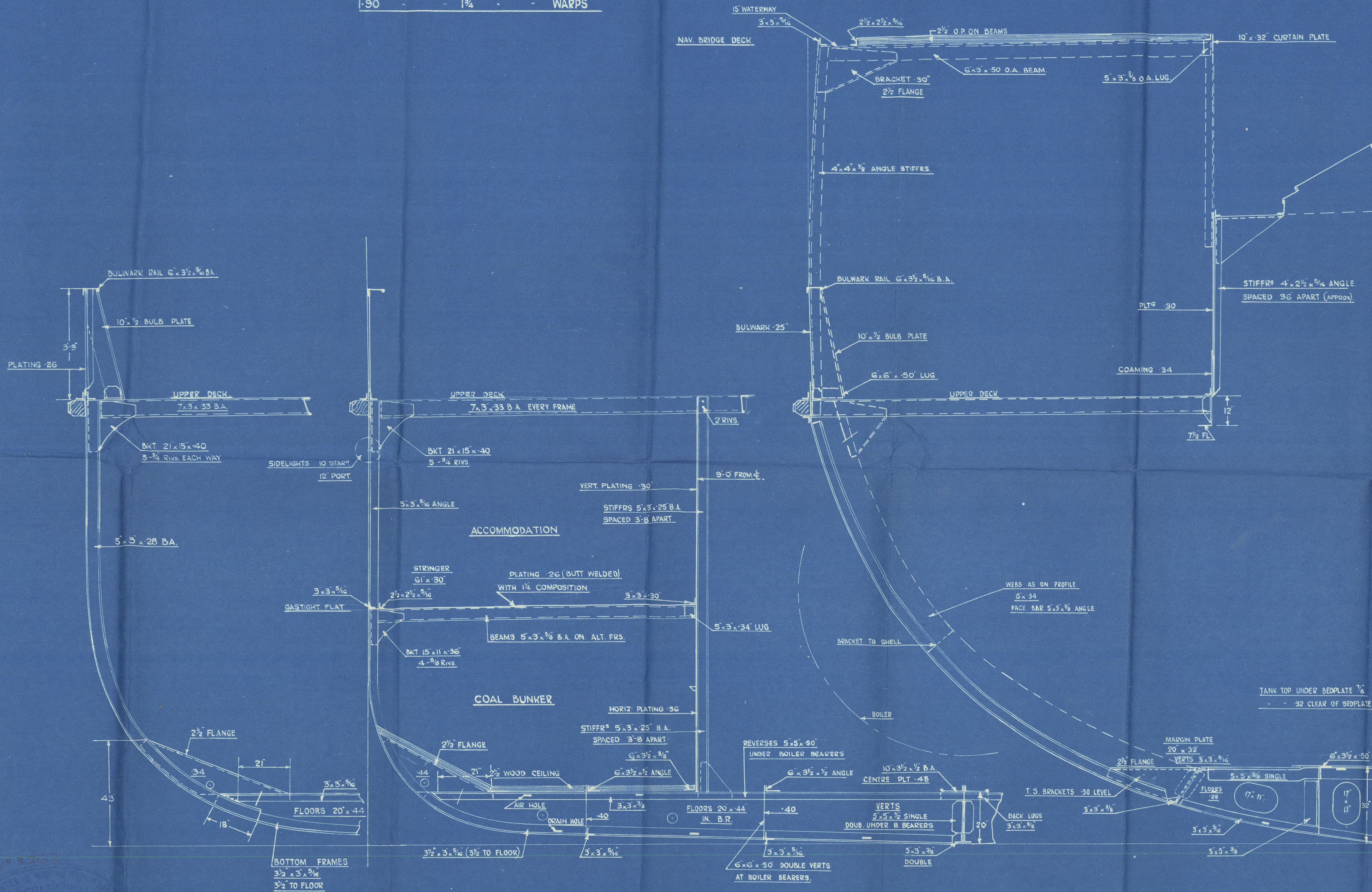
TO CLASS LLOYDS * 100 A.I. WITH FREEBOARD "FOR FERRY SERVICE" WITH LIMITING PORTS BATUM AND ALEXANDRETTA.

SCANTLINGS SUITABLE FOR AN ALL SEASONS DRAFT OF 9'-0" B.K.

SCALE 1/2" = 1 FOOT.

EQUIPMENT NUMERAL

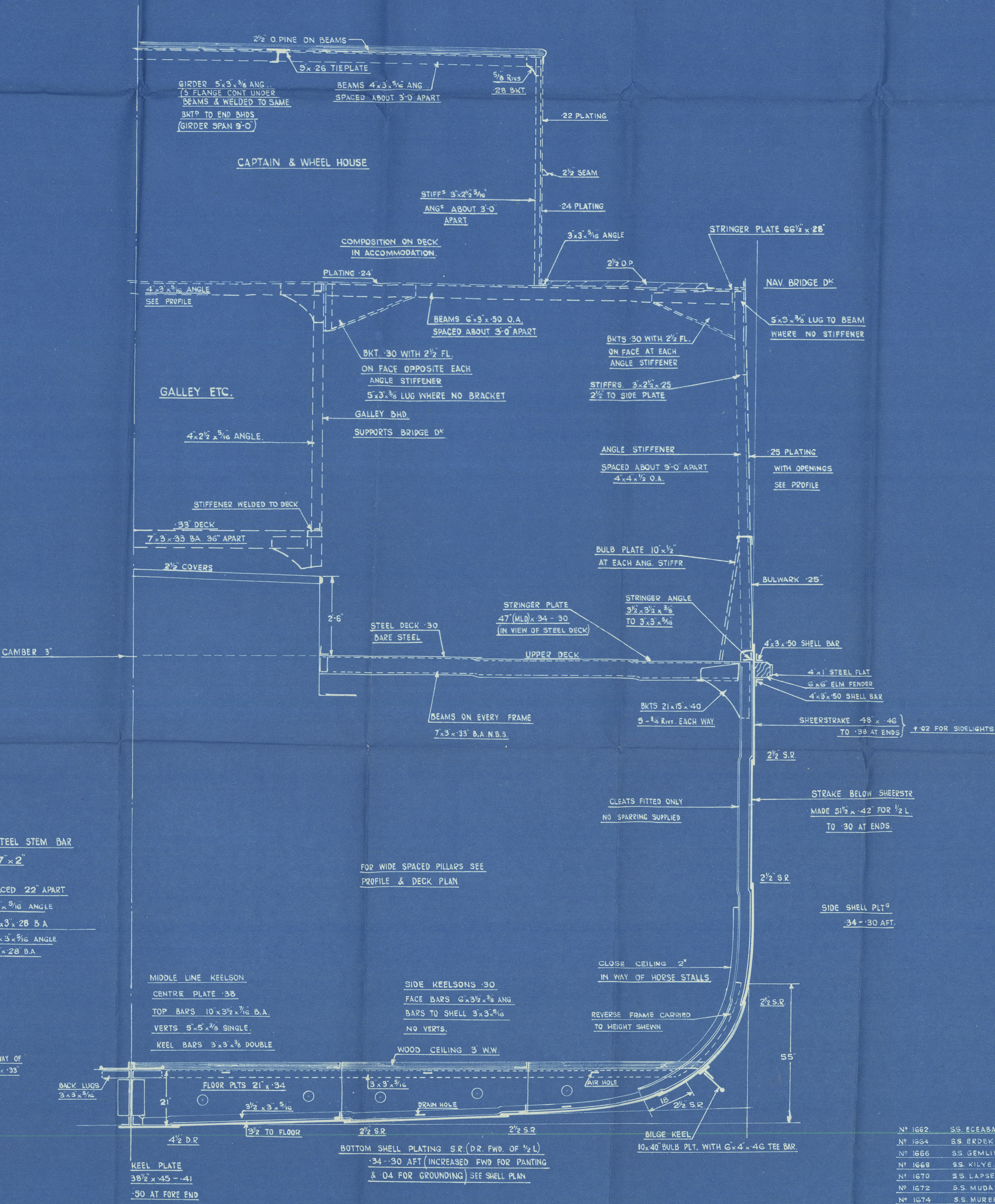
L x (B x D) =	9900
HOUSE ON UPPER DECK 44' x 12' x 1/2" = 264	301.5
HOUSE ON BRIDGE DECK 13.5' x 7.5' x 1/2" = 49	8.75
2.5' x 7' x 1/2" = 8.75	
TOTAL	10259.25
2 BOWERS ANCHORS STOCKLESS 60 1/2 cwt. COLL. W.T.	
1 STREAM ANCHOR EX. STOCK 5 1/2 cwt.	
180 FATHOMS OF 1 1/2" STUD CHAIN CABLE	
60 " " 3/4" STEEL WIRE STREAM	
80 " " 3" " " TOWLINE	
1-90 " " 2 1/4" " " HAWERS	
1-90 " " 1 1/2" " " WARPS	



SECTION IN WAY OF BOILER ROOM
CLEAR OF BUNKER

SECTION IN WAY OF BUNKER AND BOILER

SECTION THRO ENGINE ROOM



SECTION THRO HOLD

Nº 1662 S.S. ECEABAT.
Nº 1664 S.S. EREDE.
Nº 1666 S.S. GEMUK.
Nº 1668 S.S. KILVE.
Nº 1670 S.S. LAPSEKI.
Nº 1672 S.S. MUDANYA.
Nº 1674 S.S. MUREPTE.
Nº 1676 S.S. SARKOV.

S.H. & W.R. 1662
"Eceabat"

Midship Section as built

ss. "Eceabat"

NEWCASTLE ON TYNE.

Report No. 98746.



© 2020

Lloyd's Register
Foundation

00 8953 . 00 8963 - 0101