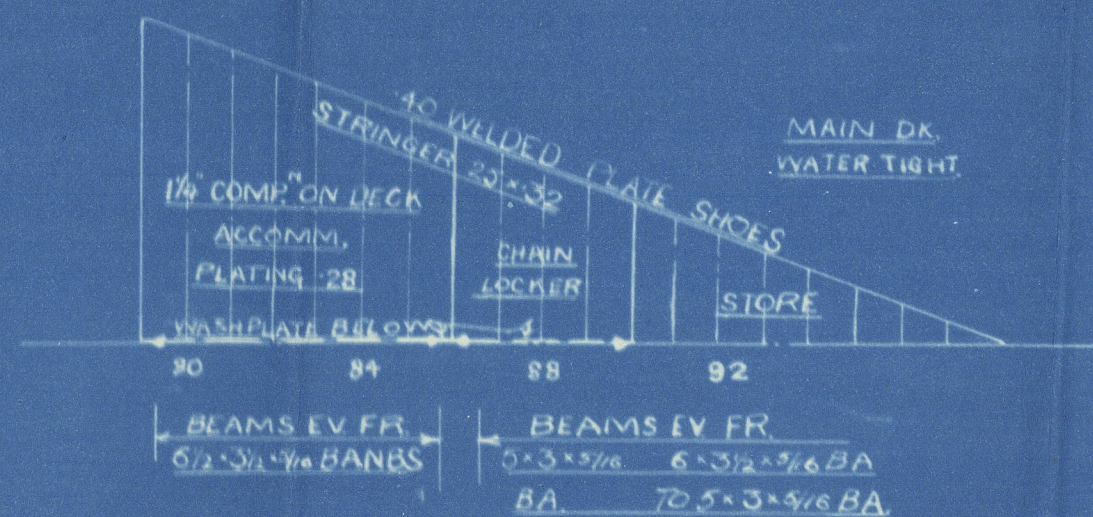
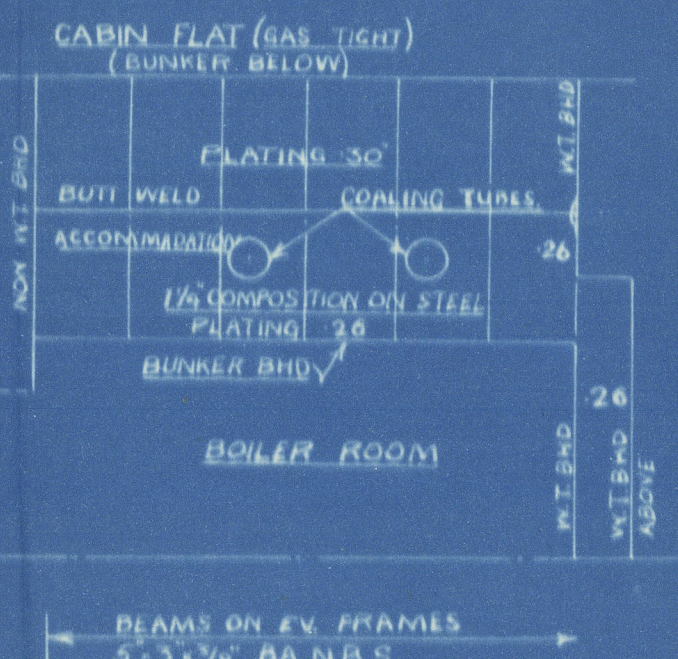
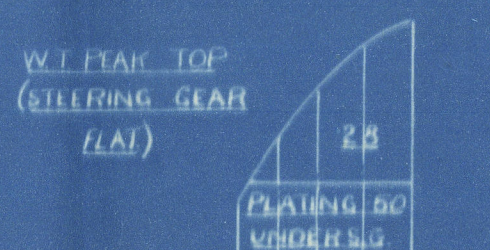
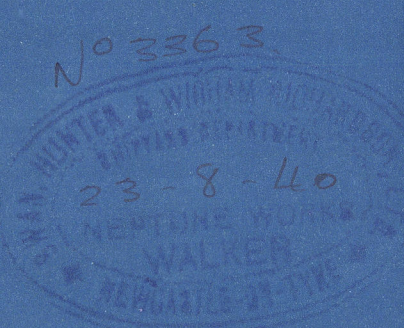
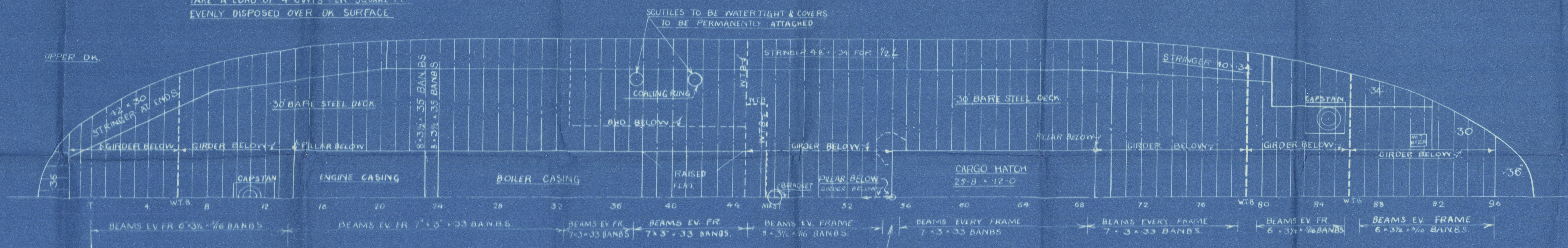
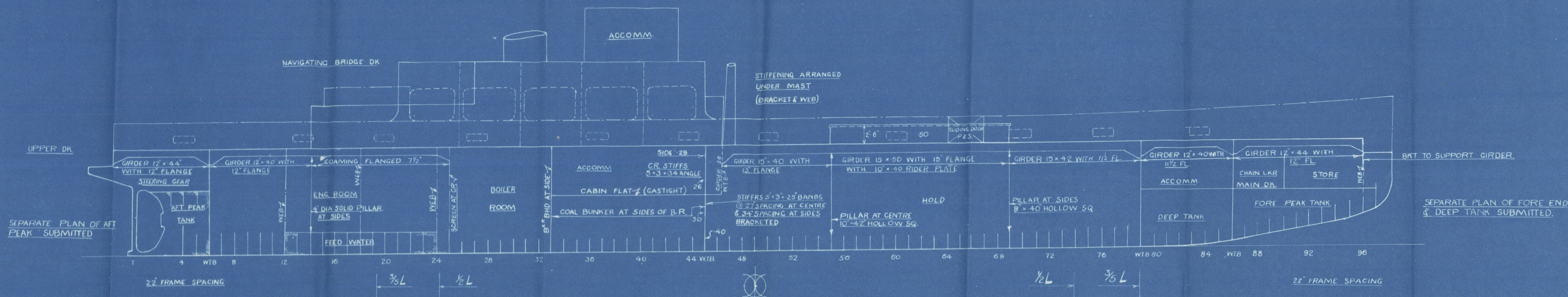
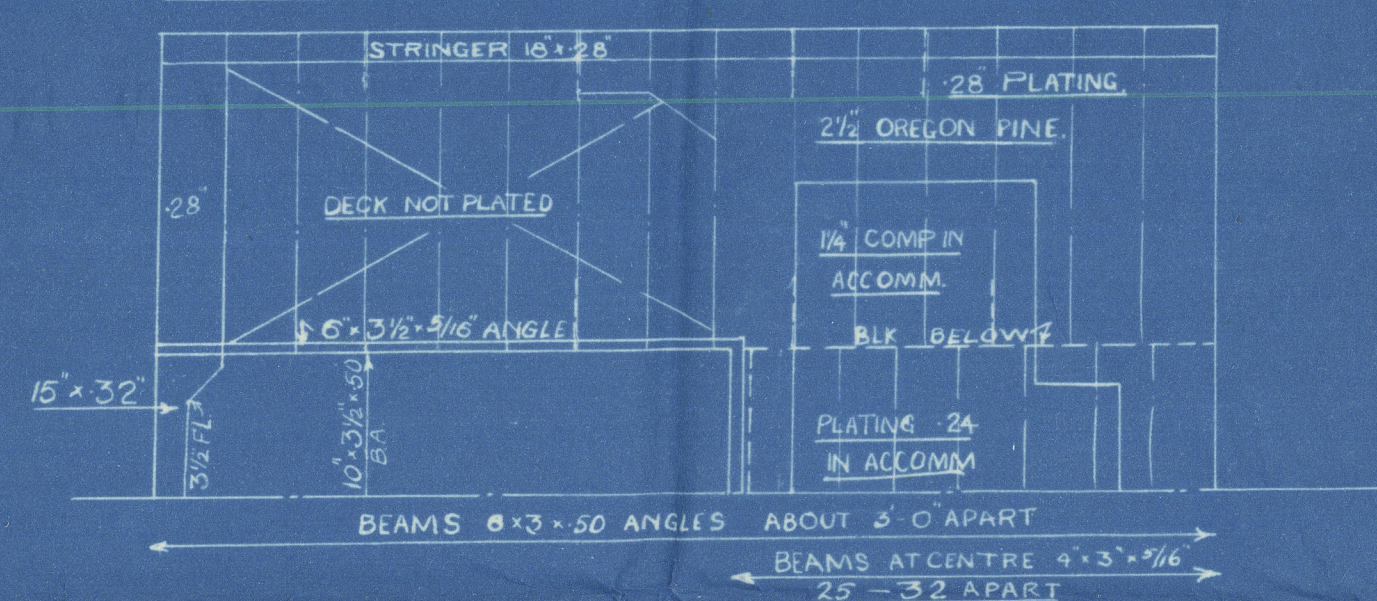


NAVIGATING BRIDGE DK



SS ECEABAT, ETC. PROFILE & DECK PLANS.

DIMENSIONS +180'-0" P.P. x 40'-0" B. M.L. x 15'-0" D. M.L.
TO CLASS LLOYDS +100 A.I. WITH FREEBOARD.
FOR FERRY SERVICE WITH LIMITING PORTS. BATUM AND ALEXANDRETTA.
5 CANTLING'S SUITABLE FOR AN ALL SEASONS DRAFT OF 9'-0" B.K.

| | |
|---------|-------------|
| N° 1662 | SS ECEABAT. |
| N° 1664 | SS ERDEK. |
| N° 1666 | SS GEMLIK. |
| N° 1668 | SS KILYE. |
| N° 1670 | SS LAPSEKI. |
| N° 1672 | SS MUDANYA. |
| N° 1674 | SS MUREPTE. |
| N° 1676 | SS SAKKOY. |

S.H. & W.R. 1662

"ECCABAT"

People & Decks on hull.

s.s. "Eccabat"

NEWCASTLE ON TYNE.

Report No. 98746.



© 2020

Lloyd's Register
Foundation

00 8953 - 00 8963 - 9/00