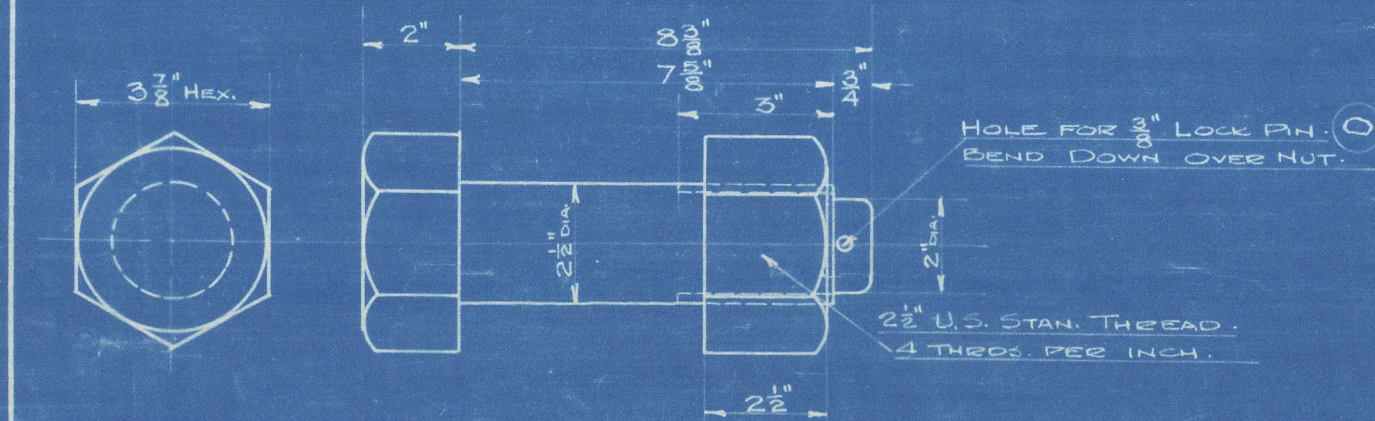
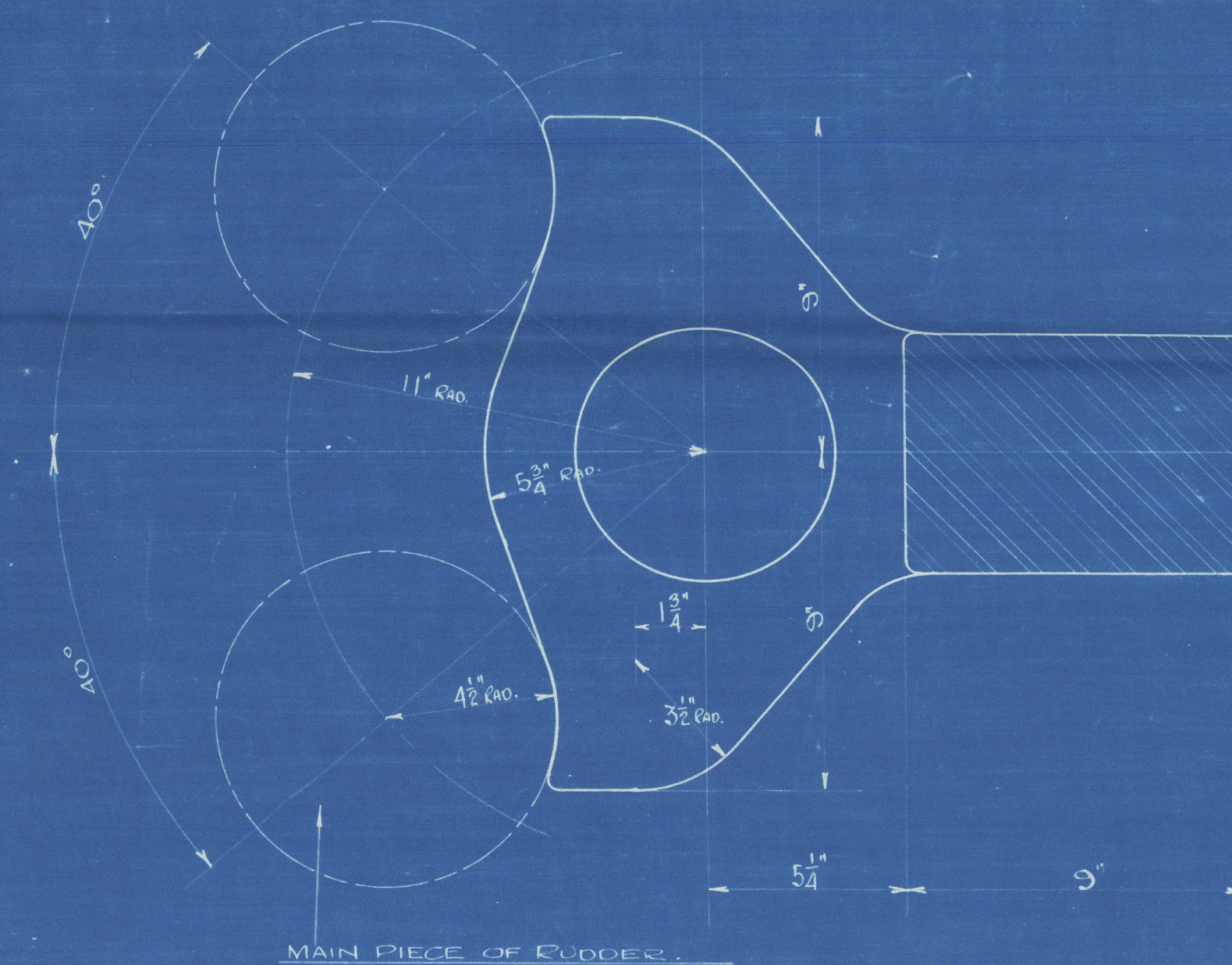
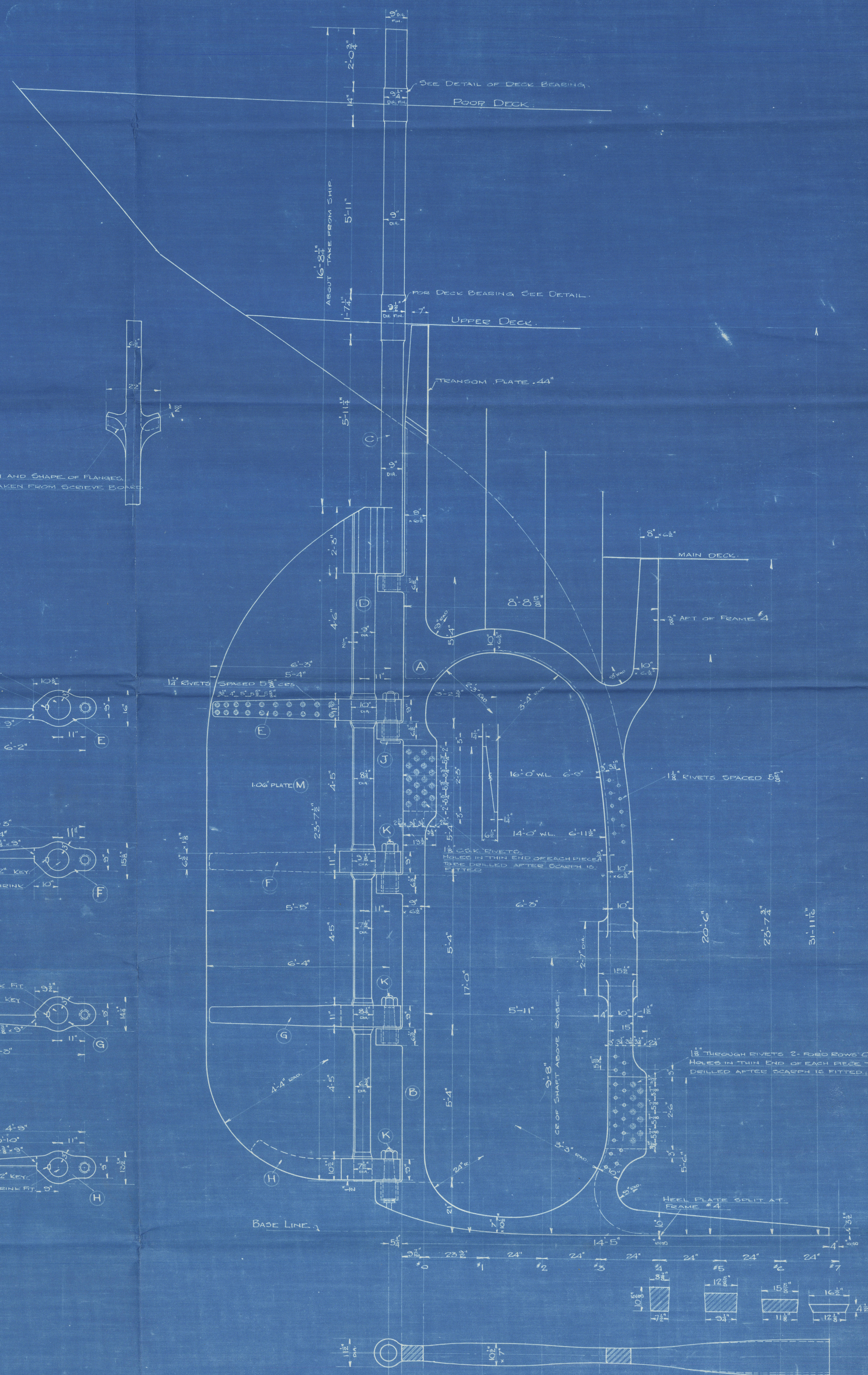
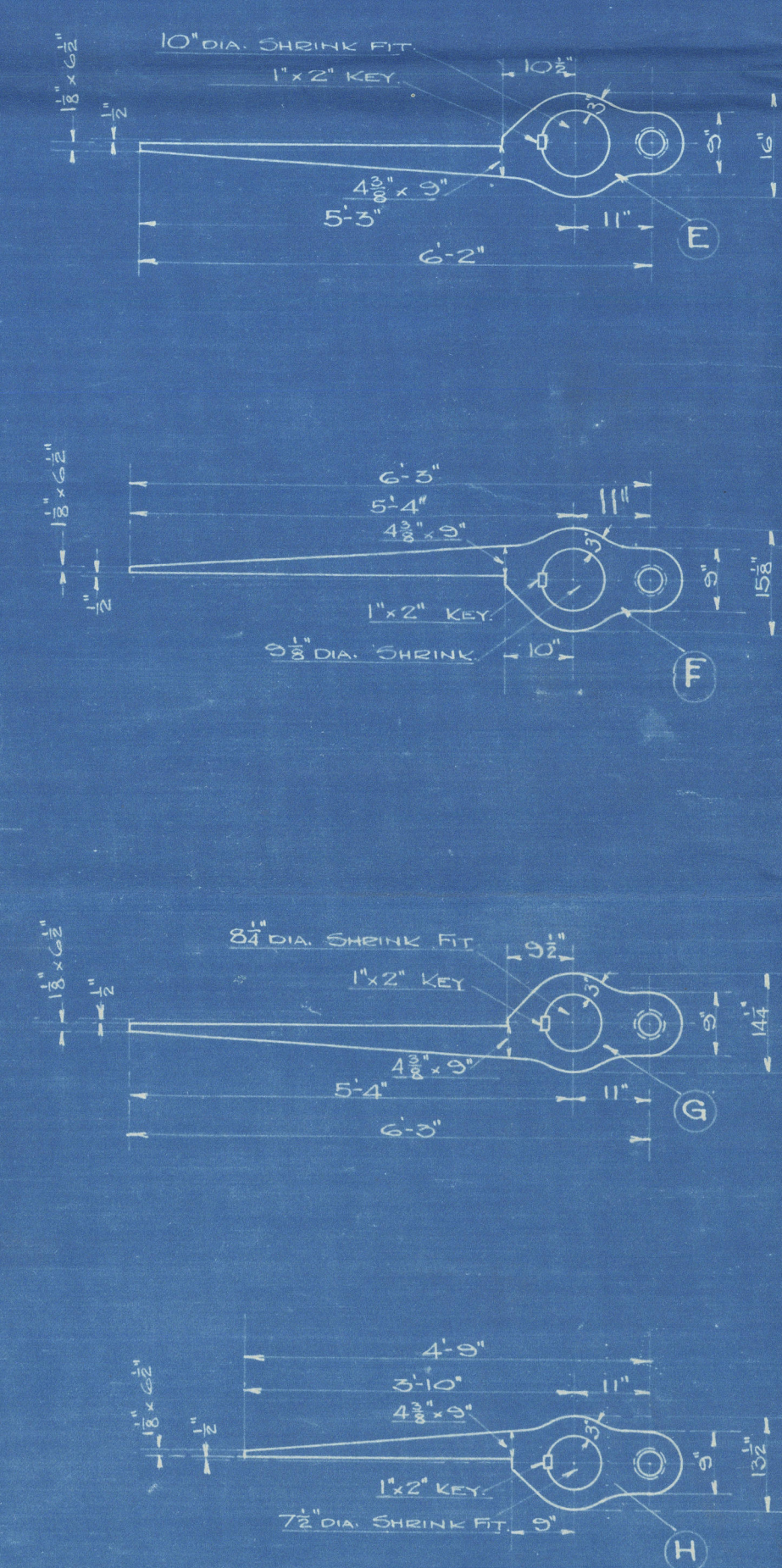


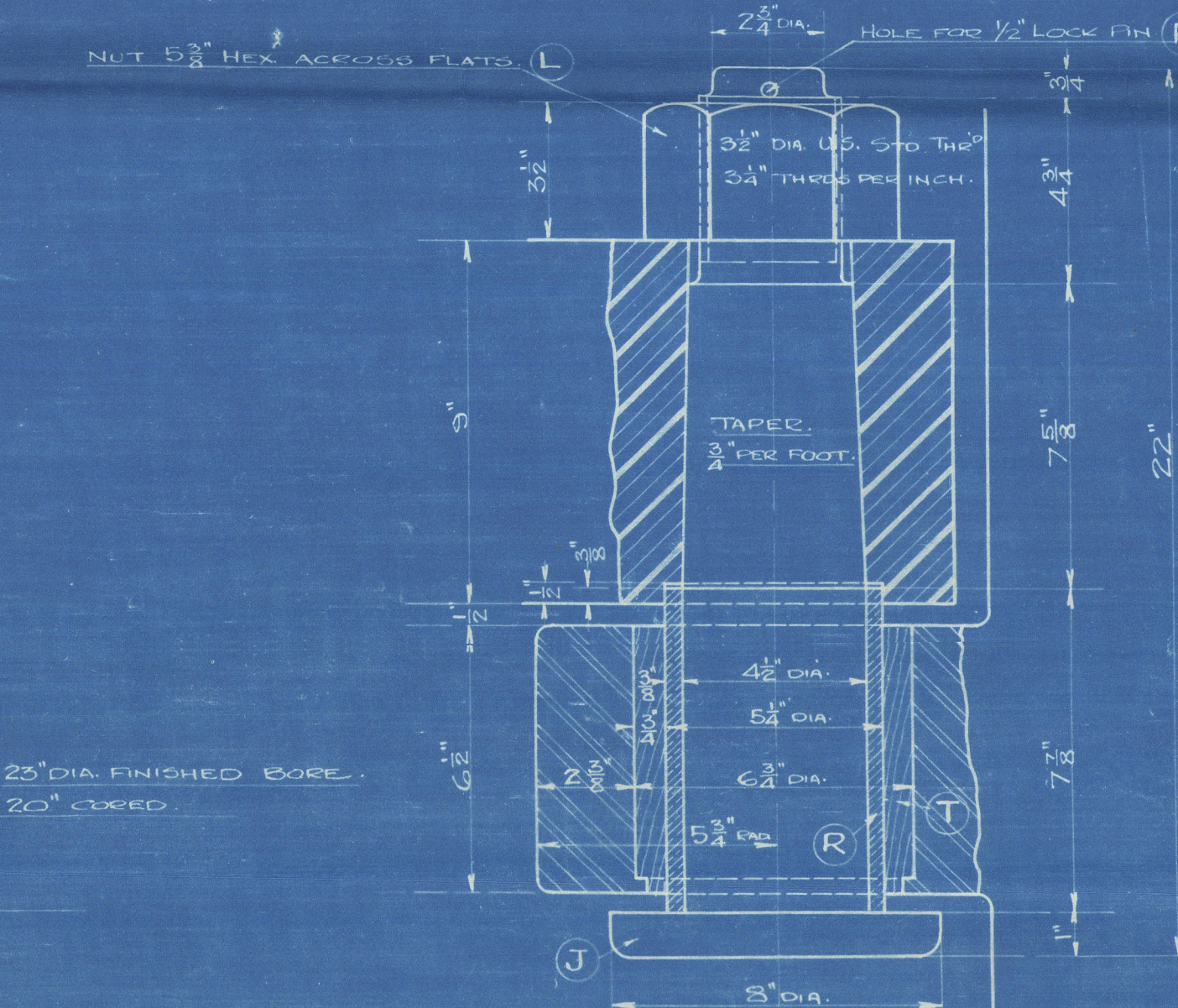
- DETAIL OF COUPLING -  
SCALE: 1" = 1 FOOT



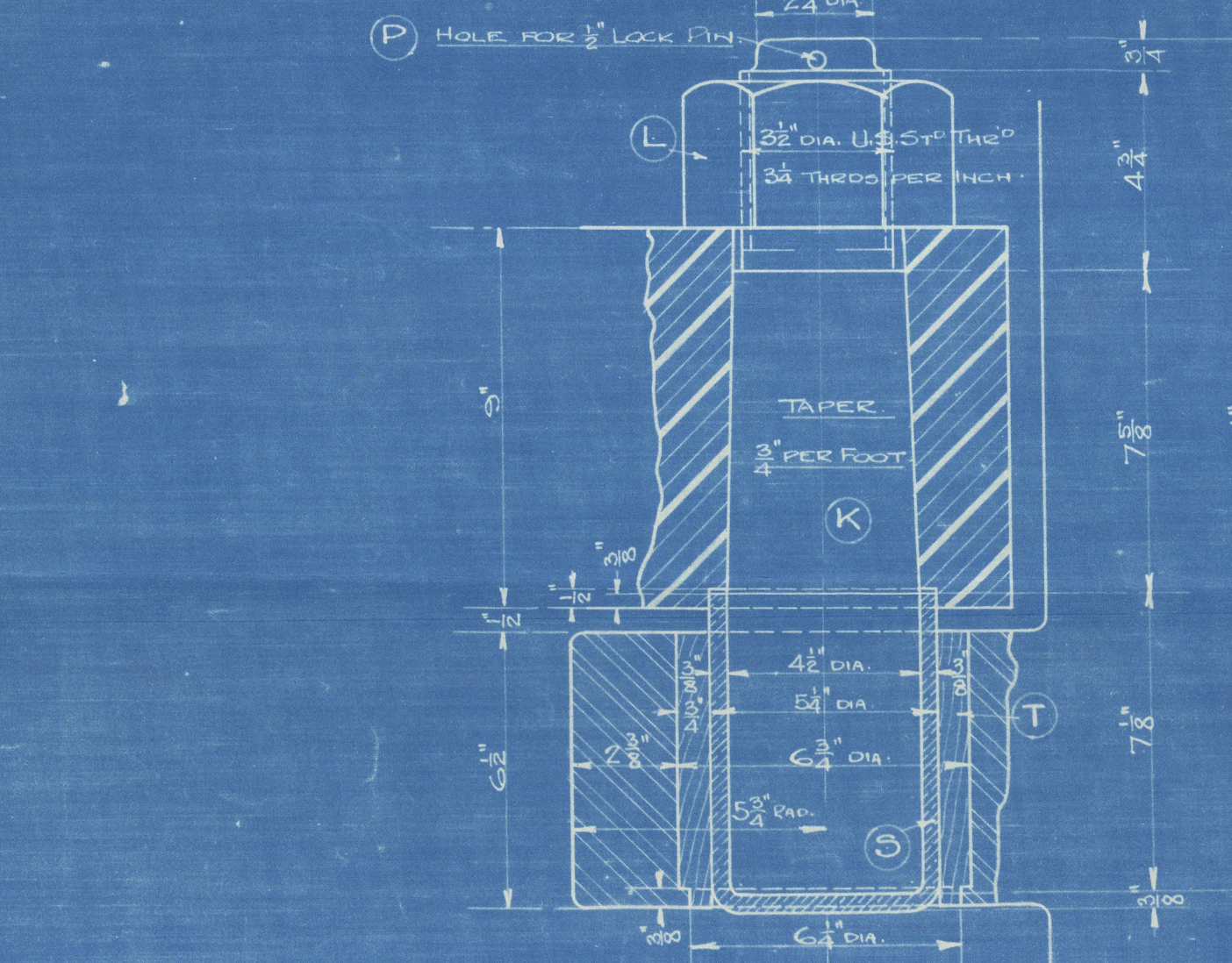
- DETAIL OF COUPLING BOLTS - (I)  
SCALE: 3" = 1 FOOT



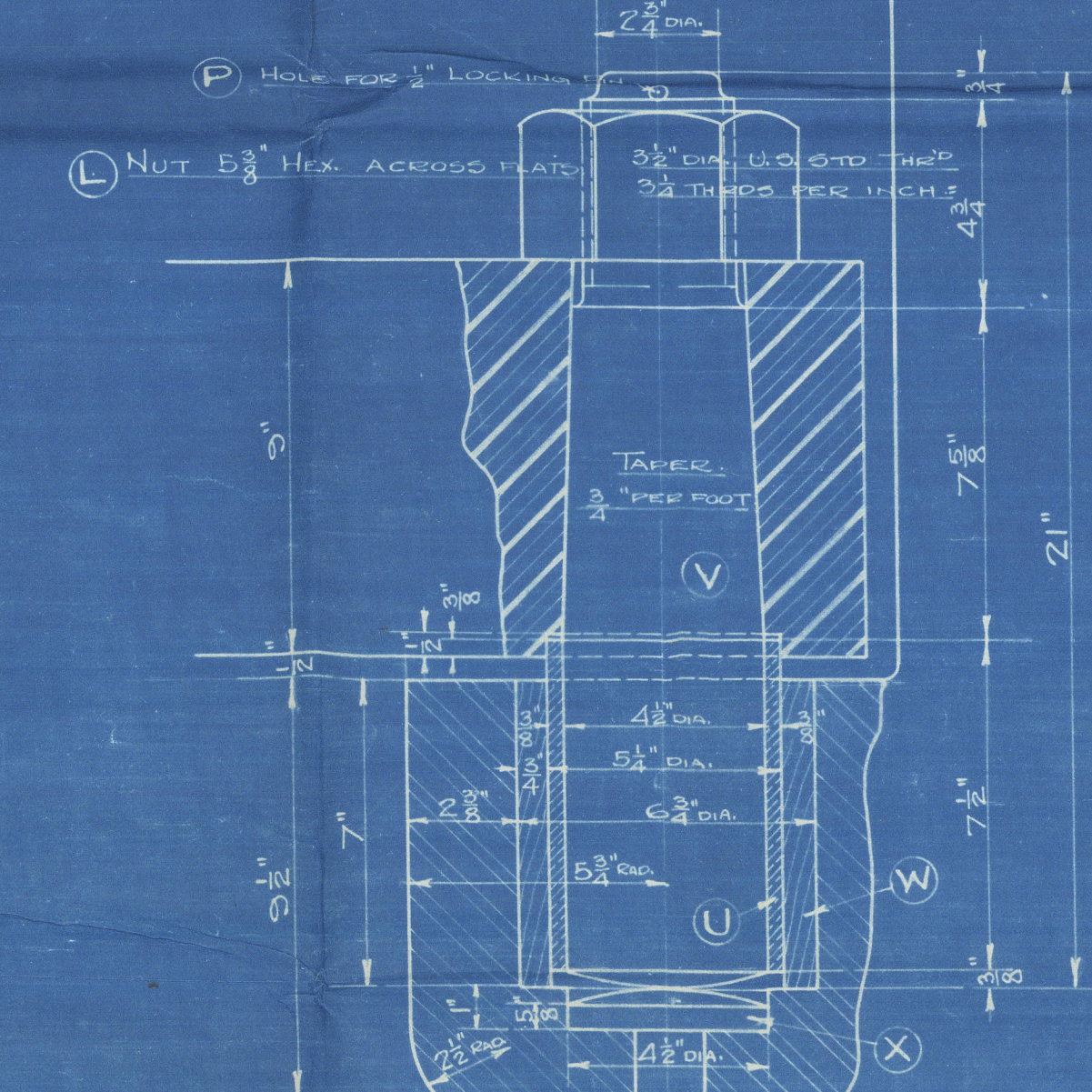
- DETAIL OF UPPER GUDGEON SHOWING STOP AND LOWER END OF STOCK -



- DETAIL OF LOCKING PINTLE -



- DETAIL OF INTERMEDIATE PINTLES -



- DETAIL OF LOWER PINTLE AND GUDGEON -

ONE SHIP

1	STERN FRAME	UPPER PART	CAST STEEL	LYOYD'S TEST
1	"	"	"	"
1	"	"	"	"
1	RUDDER STOCK	LOWER PART	FORGED STEEL	"
1	RUDDER MAINPIECE	"	"	"
1	UPPER ARM	"	"	"
1	SECOND "	"	"	"
1	THIRD "	"	"	"
1	LOWER "	"	"	"
5	COUPLING BOLTS	"	"	"
1	LOCKING PINTLE	"	"	"
2	INTERMEDIATE "	"	"	"
4	PINTLE NUTS	"	"	"
1	RUDDER PLATE	"	"	"
2	ANGLE CLIPS	"	"	"
8	LOCKING PINS	"	"	"
4	"	"	"	"
1	SLEEVE	"	"	"
1	"	"	"	"
2	"	"	"	"
4	BUSHINGS	"	"	"
1	SLEEVE	"	"	"
1	LOWER PINTLE	"	"	"
1	BUSHING	"	"	"
1	BUTTON	"	"	"

- DATA FOR LLOYD'S -

LONGITUDINAL NUMBER Lx(B+D)	25660
AREA OF RUDDER (A)	122 SQ. FT.
C.G. AHEAD C.L. OF PINTLES (D)	3.18 FT.
A x D	387.3
SPEED OF VESSEL	11 KNOTS

NOTE: USE OLD PATTERN ALTER TO SUIT.

- STERN FRAME AND RUDDER -

1032 *Ship* 1/2" = 1 FOOT 44540

1316 ONE WILLY GILBERT OF BERGEN J.C. GARY 7/16

HULL 17

Union Iron Works Co.  
JUL 27 1916  
San Francisco, Calif.

Lloyd's Register  
Foundation



— 5.5. "DICTO" —

Stern Frame & Rudder  
of vessel as built

Union Iron Works Co's

— No 17. —

Alameda: Cal.

Wm Larranga



© 2020

Lloyd's Register  
Foundation

008909-008916-0121