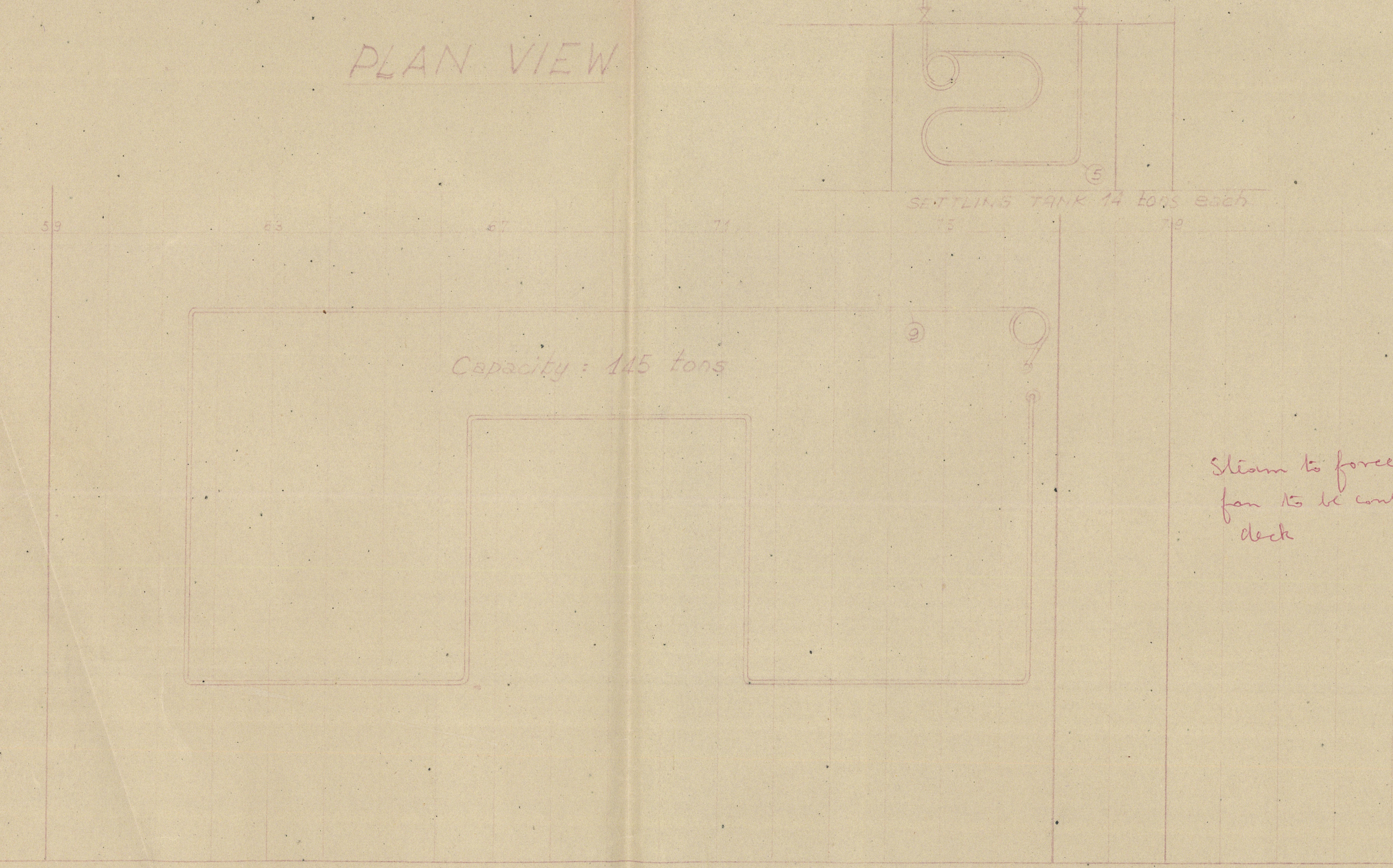
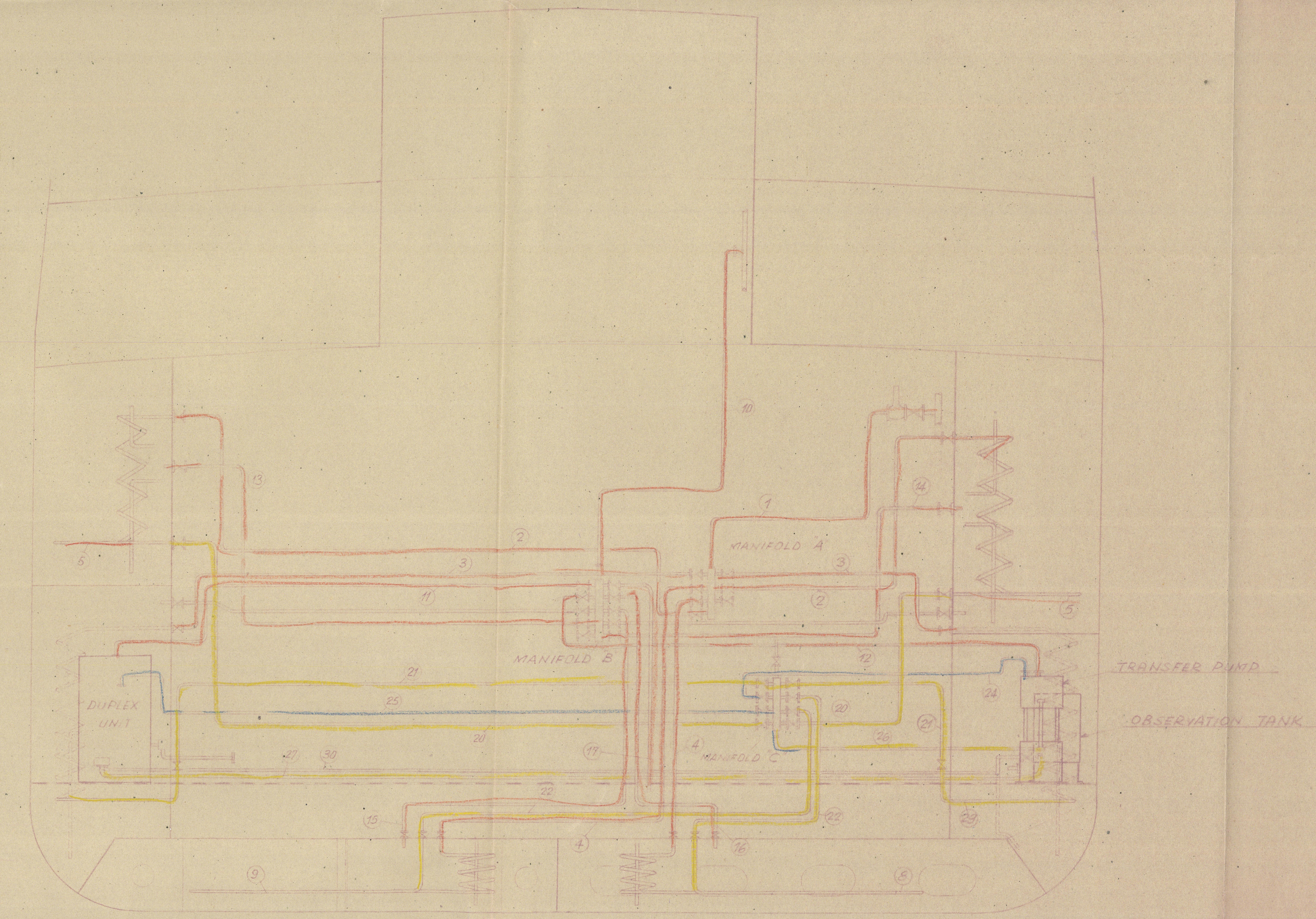


PLAN VIEW



PLAN VIEW

SHOWING DOUBLE BOTTOM COILS



LOOKING AFT AT BULKHEAD
(SECTION AT FRAME 72)

Steaming out connections to tanks and sealing tanks to be fitted with S.O.M.R. valves and spectacle blocks

STEAM PIPES		
NO.	DESCRIPTION	SIZE INCHES
1	STEAM FROM STEAM LINE IN ENGINE ROOM TO MANIFOLD A	2" 14 5.5
2	MANIFOLD A TO HEATING COIL OF P.S. SETTLING TANKS	1 1/2 16 5
3	MANIFOLD A TO HEATING COIL OF P.S. SETTLING TANKS	1 1/2 16 5
4	HEATING COIL OF P.S. SETTLING TANKS 25 FEET LONG	1 1/2 16 5
5	HEATING COIL OF P.S. SETTLING TANK 25 FEET LONG	1 1/2 16 5
6	HEATING COIL OF P.S. SETTLING TANK 25 FEET LONG	1 1/2 16 5
7	HEATING COIL OF P.S. SETTLING TANK 25 FEET LONG	1 1/2 16 5
8	HEATING COIL OF P.S. SETTLING TANK 25 FEET LONG	1 1/2 16 5
9	HEATING COIL OF P.S. SETTLING TANK 25 FEET LONG	1 1/2 16 5
10	HEATING COIL OF P.S. SETTLING TANK 25 FEET LONG	1 1/2 16 5
11	HEATING COIL OF P.S. SETTLING TANK 25 FEET LONG	1 1/2 16 5
12	HEATING COIL OF P.S. SETTLING TANK 25 FEET LONG	1 1/2 16 5
13	HEATING COIL OF P.S. SETTLING TANK 25 FEET LONG	1 1/2 16 5
14	HEATING COIL OF P.S. SETTLING TANK 25 FEET LONG	1 1/2 16 5
15	HEATING COIL OF P.S. SETTLING TANK 25 FEET LONG	1 1/2 16 5
16	HEATING COIL OF P.S. SETTLING TANK 25 FEET LONG	1 1/2 16 5
17	HEATING COIL OF P.S. SETTLING TANK 25 FEET LONG	1 1/2 16 5
18	HEATING COIL OF P.S. SETTLING TANK 25 FEET LONG	1 1/2 16 5
19	HEATING COIL OF P.S. SETTLING TANK 25 FEET LONG	1 1/2 16 5
20	HEATING COIL OF P.S. SETTLING TANK 25 FEET LONG	1 1/2 16 5
21	HEATING COIL OF P.S. SETTLING TANK 25 FEET LONG	1 1/2 16 5
22	HEATING COIL OF P.S. SETTLING TANK 25 FEET LONG	1 1/2 16 5
23	HEATING COIL OF P.S. SETTLING TANK 25 FEET LONG	1 1/2 16 5
24	HEATING COIL OF P.S. SETTLING TANK 25 FEET LONG	1 1/2 16 5
25	HEATING COIL OF P.S. SETTLING TANK 25 FEET LONG	1 1/2 16 5
26	HEATING COIL OF P.S. SETTLING TANK 25 FEET LONG	1 1/2 16 5
27	HEATING COIL OF P.S. SETTLING TANK 25 FEET LONG	1 1/2 16 5
28	HEATING COIL OF P.S. SETTLING TANK 25 FEET LONG	1 1/2 16 5
29	HEATING COIL OF P.S. SETTLING TANK 25 FEET LONG	1 1/2 16 5
30	HEATING COIL OF P.S. SETTLING TANK 25 FEET LONG	1 1/2 16 5
31	HEATING COIL OF P.S. SETTLING TANK 25 FEET LONG	1 1/2 16 5
32	HEATING COIL OF P.S. SETTLING TANK 25 FEET LONG	1 1/2 16 5
33	HEATING COIL OF P.S. SETTLING TANK 25 FEET LONG	1 1/2 16 5
34	HEATING COIL OF P.S. SETTLING TANK 25 FEET LONG	1 1/2 16 5
35	HEATING COIL OF P.S. SETTLING TANK 25 FEET LONG	1 1/2 16 5
36	HEATING COIL OF P.S. SETTLING TANK 25 FEET LONG	1 1/2 16 5
37	HEATING COIL OF P.S. SETTLING TANK 25 FEET LONG	1 1/2 16 5
38	HEATING COIL OF P.S. SETTLING TANK 25 FEET LONG	1 1/2 16 5
39	HEATING COIL OF P.S. SETTLING TANK 25 FEET LONG	1 1/2 16 5
40	HEATING COIL OF P.S. SETTLING TANK 25 FEET LONG	1 1/2 16 5
41	HEATING COIL OF P.S. SETTLING TANK 25 FEET LONG	1 1/2 16 5
42	HEATING COIL OF P.S. SETTLING TANK 25 FEET LONG	1 1/2 16 5
43	HEATING COIL OF P.S. SETTLING TANK 25 FEET LONG	1 1/2 16 5
44	HEATING COIL OF P.S. SETTLING TANK 25 FEET LONG	1 1/2 16 5
45	HEATING COIL OF P.S. SETTLING TANK 25 FEET LONG	1 1/2 16 5
46	HEATING COIL OF P.S. SETTLING TANK 25 FEET LONG	1 1/2 16 5
47	HEATING COIL OF P.S. SETTLING TANK 25 FEET LONG	1 1/2 16 5
48	HEATING COIL OF P.S. SETTLING TANK 25 FEET LONG	1 1/2 16 5
49	HEATING COIL OF P.S. SETTLING TANK 25 FEET LONG	1 1/2 16 5
50	HEATING COIL OF P.S. SETTLING TANK 25 FEET LONG	1 1/2 16 5
51	HEATING COIL OF P.S. SETTLING TANK 25 FEET LONG	1 1/2 16 5
52	HEATING COIL OF P.S. SETTLING TANK 25 FEET LONG	1 1/2 16 5
53	HEATING COIL OF P.S. SETTLING TANK 25 FEET LONG	1 1/2 16 5
54	HEATING COIL OF P.S. SETTLING TANK 25 FEET LONG	1 1/2 16 5
55	HEATING COIL OF P.S. SETTLING TANK 25 FEET LONG	1 1/2 16 5
56	HEATING COIL OF P.S. SETTLING TANK 25 FEET LONG	1 1/2 16 5
57	HEATING COIL OF P.S. SETTLING TANK 25 FEET LONG	1 1/2 16 5
58	HEATING COIL OF P.S. SETTLING TANK 25 FEET LONG	1 1/2 16 5
59	HEATING COIL OF P.S. SETTLING TANK 25 FEET LONG	1 1/2 16 5
60	HEATING COIL OF P.S. SETTLING TANK 25 FEET LONG	1 1/2 16 5
61	HEATING COIL OF P.S. SETTLING TANK 25 FEET LONG	1 1/2 16 5
62	HEATING COIL OF P.S. SETTLING TANK 25 FEET LONG	1 1/2 16 5
63	HEATING COIL OF P.S. SETTLING TANK 25 FEET LONG	1 1/2 16 5
64	HEATING COIL OF P.S. SETTLING TANK 25 FEET LONG	1 1/2 16 5
65	HEATING COIL OF P.S. SETTLING TANK 25 FEET LONG	1 1/2 16 5
66	HEATING COIL OF P.S. SETTLING TANK 25 FEET LONG	1 1/2 16 5
67	HEATING COIL OF P.S. SETTLING TANK 25 FEET LONG	1 1/2 16 5
68	HEATING COIL OF P.S. SETTLING TANK 25 FEET LONG	1 1/2 16 5
69	HEATING COIL OF P.S. SETTLING TANK 25 FEET LONG	1 1/2 16 5
70	HEATING COIL OF P.S. SETTLING TANK 25 FEET LONG	1 1/2 16 5
71	HEATING COIL OF P.S. SETTLING TANK 25 FEET LONG	1 1/2 16 5
72	HEATING COIL OF P.S. SETTLING TANK 25 FEET LONG	1 1/2 16 5
73	HEATING COIL OF P.S. SETTLING TANK 25 FEET LONG	1 1/2 16 5
74	HEATING COIL OF P.S. SETTLING TANK 25 FEET LONG	1 1/2 16 5
75	HEATING COIL OF P.S. SETTLING TANK 25 FEET LONG	1 1/2 16 5
76	HEATING COIL OF P.S. SETTLING TANK 25 FEET LONG	1 1/2 16 5
77	HEATING COIL OF P.S. SETTLING TANK 25 FEET LONG	1 1/2 16 5
78	HEATING COIL OF P.S. SETTLING TANK 25 FEET LONG	1 1/2 16 5
79	HEATING COIL OF P.S. SETTLING TANK 25 FEET LONG	1 1/2 16 5
80	HEATING COIL OF P.S. SETTLING TANK 25 FEET LONG	1 1/2 16 5
81	HEATING COIL OF P.S. SETTLING TANK 25 FEET LONG	1 1/2 16 5
82	HEATING COIL OF P.S. SETTLING TANK 25 FEET LONG	1 1/2 16 5
83	HEATING COIL OF P.S. SETTLING TANK 25 FEET LONG	1 1/2 16 5
84	HEATING COIL OF P.S. SETTLING TANK 25 FEET LONG	1 1/2 16 5
85	HEATING COIL OF P.S. SETTLING TANK 25 FEET LONG	1 1/2 16 5
86	HEATING COIL OF P.S. SETTLING TANK 25 FEET LONG	1 1/2 16 5
87	HEATING COIL OF P.S. SETTLING TANK 25 FEET LONG	1 1/2 16 5
88	HEATING COIL OF P.S. SETTLING TANK 25 FEET LONG	1 1/2 16 5
89	HEATING COIL OF P.S. SETTLING TANK 25 FEET LONG	1 1/2 16 5
90	HEATING COIL OF P.S. SETTLING TANK 25 FEET LONG	1 1/2 16 5
91	HEATING COIL OF P.S. SETTLING TANK 25 FEET LONG	1 1/2 16 5
92	HEATING COIL OF P.S. SETTLING TANK 25 FEET LONG	1 1/2 16 5
93	HEATING COIL OF P.S. SETTLING TANK 25 FEET LONG	1 1/2 16 5
94	HEATING COIL OF P.S. SETTLING TANK 25 FEET LONG	1 1/2 16 5
95	HEATING COIL OF P.S. SETTLING TANK 25 FEET LONG	1 1/2 16 5
96	HEATING COIL OF P.S. SETTLING TANK 25 FEET LONG	1 1/2 16 5
97	HEATING COIL OF P.S. SETTLING TANK 25 FEET LONG	1 1/2 16 5
98	HEATING COIL OF P.S. SETTLING TANK 25 FEET LONG	1 1/2 16 5
99	HEATING COIL OF P.S. SETTLING TANK 25 FEET LONG	1 1/2 16 5
100	HEATING COIL OF P.S. SETTLING TANK 25 FEET LONG	1 1/2 16 5

VALVES		
NO.	DESCRIPTION	SIZE INCHES
1	STOP VALVE	2"
2	REDUCING VALVE	2"
3	STOP VALVE ON MANIFOLD A	1 1/2"
4	STOP VALVE ON MANIFOLD B	1 1/2"
5	STOP VALVE ON MANIFOLD C	1 1/2"
6	STOP VALVE ON MANIFOLD D	1 1/2"
7	STOP VALVE ON MANIFOLD E	1 1/2"
8	STOP VALVE ON MANIFOLD F	1 1/2"
9	STOP VALVE ON MANIFOLD G	1 1/2"
10	STOP VALVE ON MANIFOLD H	1 1/2"
11	STOP VALVE ON MANIFOLD I	1 1/2"
12	STOP VALVE ON MANIFOLD J	1 1/2"
13	STOP VALVE ON MANIFOLD K	1 1/2"
14	STOP VALVE ON MANIFOLD L	1 1/2"
15	STOP VALVE ON MANIFOLD M	1 1/2"
16	STOP VALVE ON MANIFOLD N	1 1/2"
17	STOP VALVE ON MANIFOLD O	1 1/2"
18	STOP VALVE ON MANIFOLD P	1 1/2"
19	STOP VALVE ON MANIFOLD Q	1 1/2"
20	STOP VALVE ON MANIFOLD R	1 1/2"
21	STOP VALVE ON MANIFOLD S	1 1/2"
22	STOP VALVE ON MANIFOLD T	1 1/2"
23	STOP VALVE ON MANIFOLD U	1 1/2"
24	STOP VALVE ON MANIFOLD V	1 1/2"
25	STOP VALVE ON MANIFOLD W	1 1/2"
26	STOP VALVE ON MANIFOLD X	1 1/2"
27	STOP VALVE ON MANIFOLD Y	1 1/2"
28	STOP VALVE ON MANIFOLD Z	1 1/2"
29	STOP VALVE ON MANIFOLD AA	1 1/2"
30	STOP VALVE ON MANIFOLD AB	1 1/2"
31	STOP VALVE ON MANIFOLD AC	1 1/2"
32	STOP VALVE ON MANIFOLD AD	1 1/2"
33	STOP VALVE ON MANIFOLD AE	1 1/2"
34	STOP VALVE ON MANIFOLD AF	1 1/2"
35	STOP VALVE ON MANIFOLD AG	1 1/2"
36	STOP VALVE ON MANIFOLD AH	1 1/2"
37	STOP VALVE ON MANIFOLD AI	1 1/2"
38	STOP VALVE ON MANIFOLD AJ	1 1/2"
39	STOP VALVE ON MANIFOLD AK	1 1/2"
40	STOP VALVE ON MANIFOLD AL	1 1/2"
41	STOP VALVE ON MANIFOLD AM	1 1/2"
42	STOP VALVE ON MANIFOLD AN	1 1/2"
43	STOP VALVE ON MANIFOLD AO	1 1/2"
44	STOP VALVE ON MANIFOLD AP	1 1/2"
45	STOP VALVE ON MANIFOLD AQ	1 1/2"
46	STOP VALVE ON MANIFOLD AR	1 1/2"
47	STOP VALVE ON MANIFOLD AS	1 1/2"
48	STOP VALVE ON MANIFOLD AT	1 1/2"
49	STOP VALVE ON MANIFOLD AU	1 1/2"
50	STOP VALVE ON MANIFOLD AV	1 1/2"
51	STOP VALVE ON MANIFOLD AW	1 1/2"
52	STOP VALVE ON MANIFOLD AX	1 1/2"
53	STOP VALVE ON MANIFOLD AY	1 1/2"
54	STOP VALVE ON MANIFOLD AZ	1 1/2"
55	STOP VALVE ON MANIFOLD BA	1 1/2"
56	STOP VALVE ON MANIFOLD BB	1 1/2"
57	STOP VALVE ON MANIFOLD BC	1 1/2"
58	STOP VALVE ON MANIFOLD BD	1 1/2"
59	STOP VALVE ON MANIFOLD BE	1 1/2"
60	STOP VALVE ON MANIFOLD BF	1 1/2"
61	STOP VALVE ON MANIFOLD BG	1 1/2"
62	STOP VALVE ON MANIFOLD BH	1 1/2"
63	STOP VALVE ON MANIFOLD BI	1 1/2"
64	STOP VALVE ON MANIFOLD BJ	1 1/2"
65	STOP VALVE ON MANIFOLD BK	1 1/2"
66	STOP VALVE ON MANIFOLD BL	1 1/2"
67	STOP VALVE ON MANIFOLD BM	1 1/2"
68	STOP VALVE ON MANIFOLD BN	1 1/2"
69	STOP VALVE ON MANIFOLD BO	1 1/2"
70	STOP VALVE ON MANIFOLD BP	1 1/2"
71	STOP VALVE ON MANIFOLD BQ	1 1/2"
72	STOP VALVE ON MANIFOLD BR	1 1/2"
73	STOP VALVE ON MANIFOLD BS	1 1/2"
74	STOP VALVE ON MANIFOLD BT	1 1/2"
75	STOP VALVE ON MANIFOLD BU	1 1/2"
76	STOP VALVE ON MANIFOLD BV	1 1/2"
77	STOP VALVE ON MANIFOLD BW	1 1/2"
78	STOP VALVE ON MANIFOLD BX	1 1/2"
79	STOP VALVE ON MANIFOLD BY	1 1/2"
80	STOP VALVE ON MANIFOLD BZ	1 1/2"
81	STOP VALVE ON MANIFOLD CA	1 1/2"
82	STOP VALVE ON MANIFOLD CB	1 1/2"
83	STOP VALVE ON MANIFOLD CC	1 1/2"
84	STOP VALVE ON MANIFOLD CD	1 1/2"
85	STOP VALVE ON MANIFOLD CE	1 1/2"
86	STOP VALVE ON MANIFOLD CF	1 1/2"
87	STOP VALVE ON MANIFOLD CG	1 1/2"
88	STOP VALVE ON MANIFOLD CH	1 1/2"
89	STOP VALVE ON MANIFOLD CI	1 1/2"
90	STOP VALVE ON MANIFOLD CJ	1 1/2"
91	STOP VALVE ON MANIFOLD CK	1 1/2"
92	STOP VALVE ON MANIFOLD CL	1 1/2"
93	STOP VALVE ON MANIFOLD CM	1 1/2"
94	STOP VALVE ON MANIFOLD CN	1 1/2"
95	STOP VALVE ON MANIFOLD CO	1 1/2"
96	STOP VALVE ON MANIFOLD CP	1 1/2"
97	STOP VALVE ON MANIFOLD CQ	1 1/2"
98	STOP VALVE ON MANIFOLD CR	1 1/2"
99	STOP VALVE ON MANIFOLD CS	1 1/2"
100	STOP VALVE ON MANIFOLD CT	1 1/2"

- GENERAL NOTES FOR CONVERSION
- Workmanship and all material to conform with rules and regulations of Lloyd Register of Shipping or Bureau Veritas.
 - Pipes seamless mild steel manufactured by the Siemens-Martin process to withstand 20 tons per sq. inch pressure, hydrostatic test.
 - Entire installation will conform with international convention on safety of life at sea 1980.
 - Pipe connection for one inch and larger will be with flanges. Flanges will be forged steel, slipped on pipes and welded.
 - Material of the valve body is to be cast or forged steel. The mountings (valve seat, lift spindle) to be bronze.
 - All valves to prove tight and withstand internal hydrostatic test pressure of 20 lbs. per sq. inch.
 - All valves one inch and larger are to have flanges for joining.

DESIGNED FOR
BY
1ST. 4734
S.S. HUSEYIN
CONVERSION FROM COAL TO
OIL BURNING

STEAM PIPING
ARRANGEMENT
DESIGNED & DRAWN BY T. I. GIRAY
DATE 25 JULY 1957
SCALE 1/4"=1'-0"
FOR OWNER Capt. J. Giray

The remaining requirements of the Rules for Fire Extinguishing Arrangements to be complied with so far as they are applicable.

The remaining requirements of the Rules for Pumping and Piping to be complied with so far as they are applicable.