

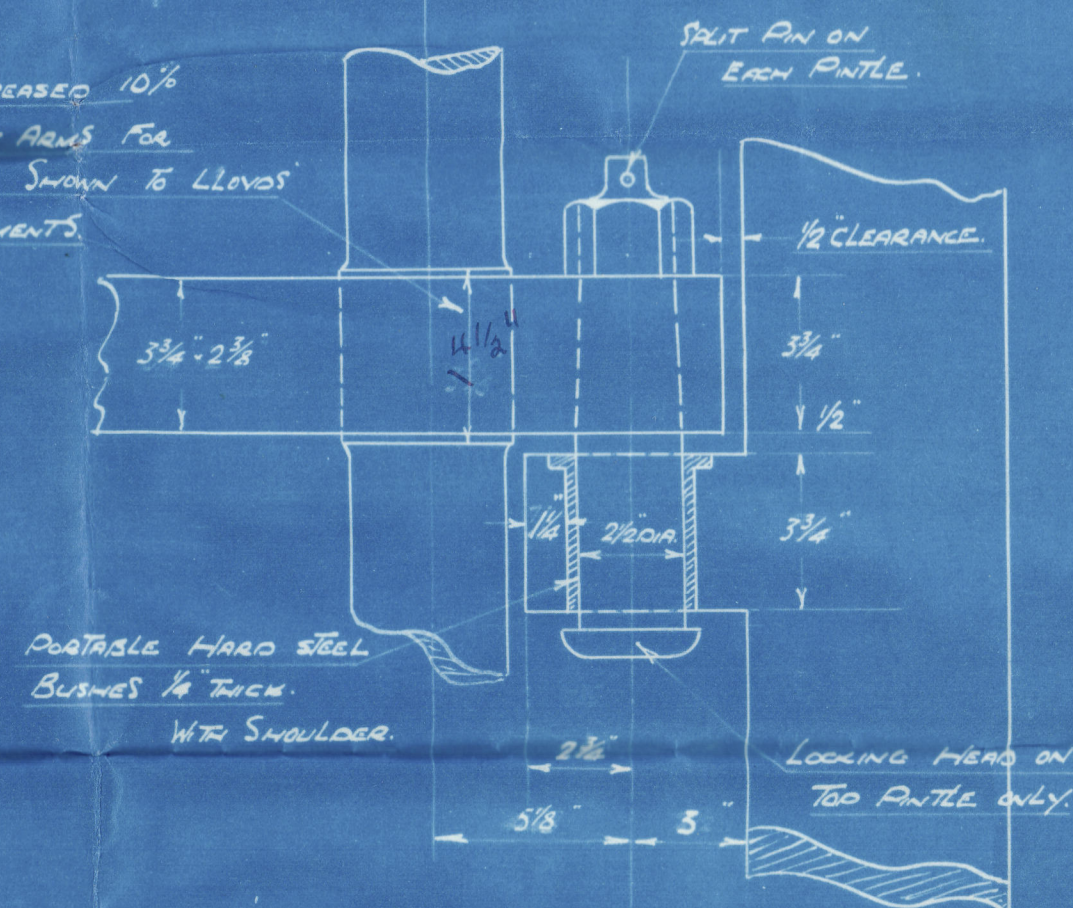
SCALE: 1" = 1 FOOT. (APPROX.)

STAINFRAMET: To be of forged scrap iron or steel. Girders to be forged solid in middle part, carefully bored out in true line and fitted with footable. Lead steel bushes to take pins. Bar for stem tube to be faced and rough bored to size given. Wheel holes to be bored for plating to age and pitch as shown.

RUSSER POST: It to be forged <sup>light</sup> steel. Pliers of hard steel to be portable and tapered (making no shoulder) with nut and locking pin. Top pin to be the locking pin with head on flower end or shown. Top and bottom of all pin's eyes to be surfaced square to center line so as when fitted pliers and nuts may be fast to their work. Nut has to be bored for plate and countersunk on outside of cool arm. Keyways to be cut.

ALL TO APPROVAL OF LLOYDS' AND OWNERS' SURVEYORS.  
FIGURED DIMENSIONS NOT TO BE EXCEEDED.

POST INCREASED 10%  
IN WAY OF ARMS FOR  
DISTANCE SHOWN TO  
REQUIREMENTS.



DETAIL OF GUDGEON'S, PINTLES  
AND STOPPER.

SCALE : 3 IN = 1 FOOT. (APPROX.)

POST INCREASED 10%  
AS SHOWN ABOVE.

APPROVED  
LLOYDS REGISTER OF SHIPPING

J. Montgomery **DATE** 13.9.46



Geo. Brown & Co

M.V. KATOORA

No. 155.

Sternpost & Rudder.

(Amended.)

Grk. Rep. No. 18783.

M.V. "KATOORA"

GRK. 18783.

© 2021

Lloyd's Register  
Foundation

008855-008862-0050