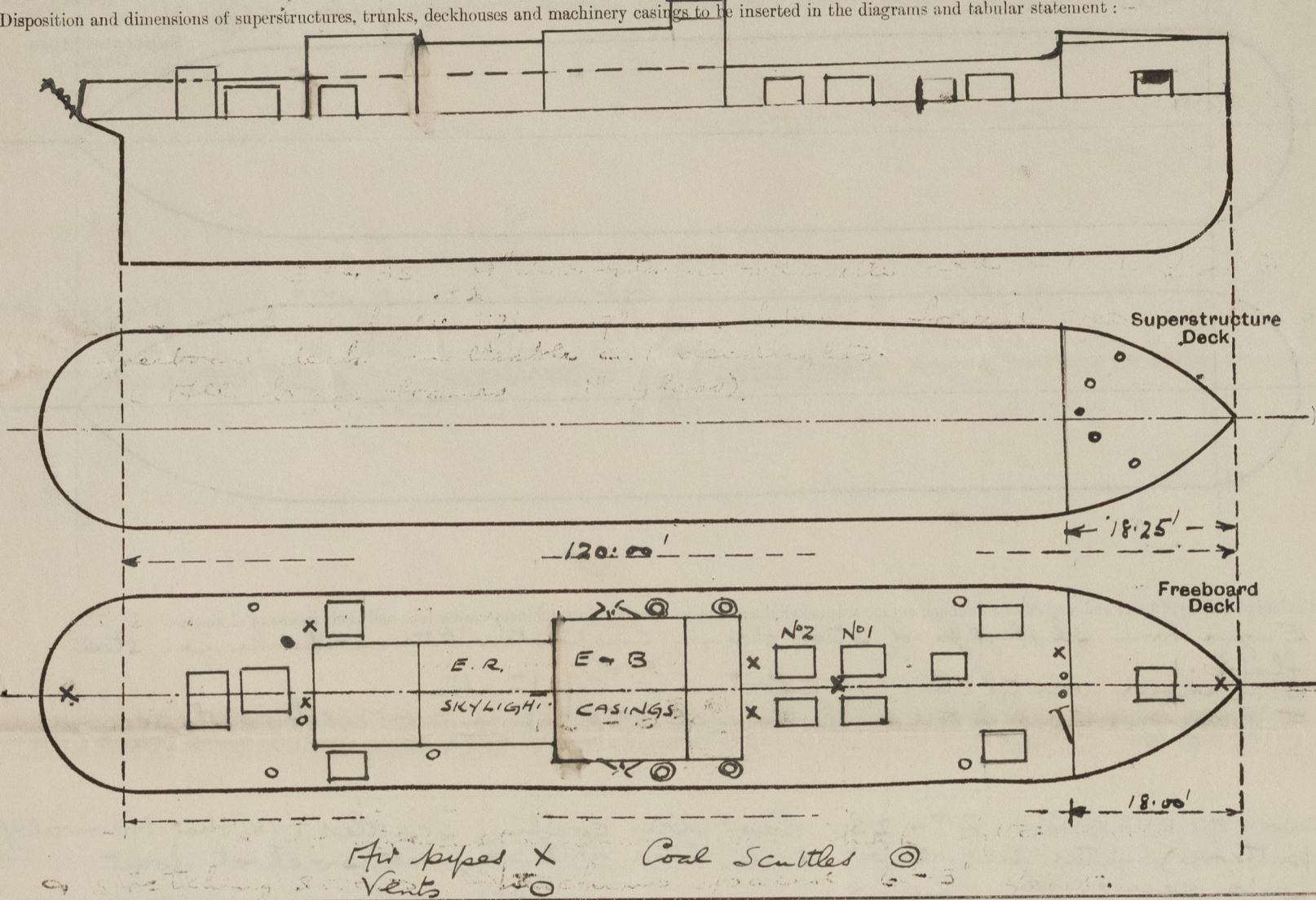


Lloyd's Register of Shipping.
SURVEYS FOR FREEBOARD.
(CONDITIONS OF ASSIGNMENT.)

Index No. 37183
(For London Office only).
-1 MAR 1943
Hd 4945

Ship's Name "FRESHMERE"
Official Number 168407
Nationality and Port of Registry British London
Port of Survey Lytham (Liverpool)
Surveyor's Signature Harry S. Newton
Date of Survey During construction

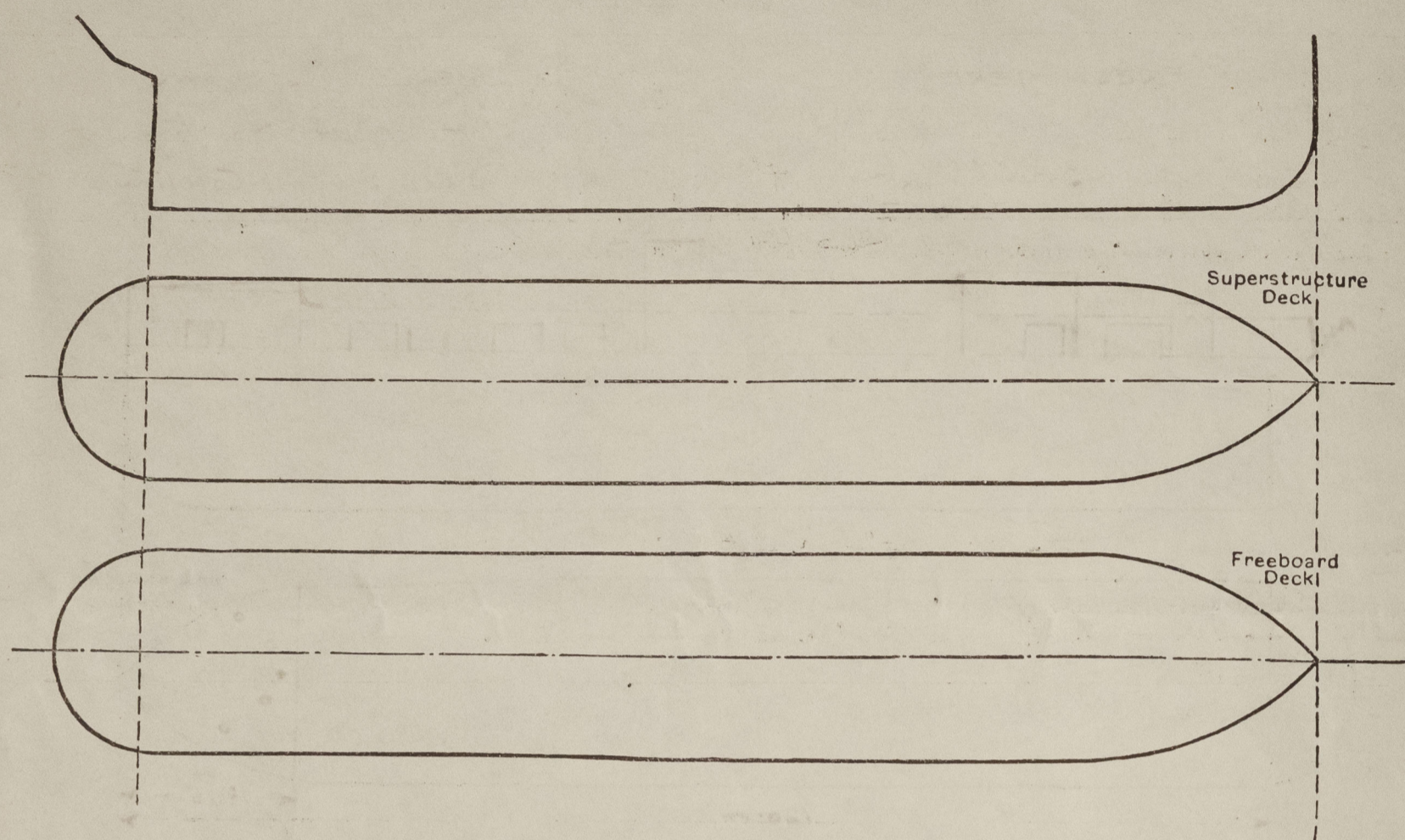
Disposition and dimensions of superstructures, trunks, deckhouses and machinery casings to be inserted in the diagrams and tabular statement :-



Particulars of Superstructures, Trunks, Casings, Deckhouses.								
	Coaming	Plating	Stiffeners	Spacing	End Attachments of Stiffeners	Size of Openings	Height of Sills	Height of Casings
Poop Bulkhead								
Raised Quarter Deck Bulkhead ...								
Bridge, After Bulkhead								
Bridge, Forward Bulkhead								
Forecastle Bulkhead	14" x 25"	20"	3" x 2" x 25" L	25" to 30"	Riveted to boundary angles	4'-9" x 2'-0"	14"	6'-6"
Trunk, Aft								
Trunk, Forward								
Exposed Machinery Casings on Freeboard or Raised Quarter Decks ...	18" x 32"	27"	3" x 2 1/2" x 30"	30"	Riveted to top only	4'-6" x 2'-0"	20"	7'-0" or 3'-9"
Exposed Machinery Casings on Superstructure Decks								
Machinery Casings within Superstructures not fitted with Class I Closing Appliances								
Deckhouses on Flush Deck Ships ...								
Particulars of Closing Appliances (state if capable of being manipulated from both sides).								
Poop Bulkhead								
Raised Quarter Deck Bulkhead ...								
Bridge, After Bulkhead								
Bridge, Forward Bulkhead								
Forecastle Bulkhead								
Exposed Machinery Casings on Freeboard or Raised Quarter Decks ...	Steel hinged doors to machinery bolt-downs operate both sides.							
Exposed Machinery Casings on Superstructure Decks								
Machinery Casings within Superstructures not fitted with Class I Closing Appliances								
Deckhouses on Flush Deck Ships ...								

PARTICULARS OF PROTECTION TO OPENINGS, ETC.

The following diagrams should be used to indicate the positions of cargo and coaling hatchways, gangway, cargo and coaling ports, ventilators, companionways, etc., which would affect the seaworthiness of the ship:—



Particulars of fidley, funnel and ventilator coamings, engine room skylight and other openings in machinery casing tops and their means of closing:—

Engine room skylights of steel strongly constructed fitted with hinged steel flaps.
 Stanchion ventilators of substantial construction.
 Fiddle gratings fitted with hinged steel storm covers efficiently secured.

Particulars of Flush Bunker Scuttles:— 2P & 2S. Cast iron coaling scuttles (18" dia Admiralty pattern) fitted on upper deck fitted with bayonet socket joint.
 Lids secured by chains.

Particulars of Companionways:— 1Hft giving access to lower deck accommodation, steel strongly constructed 3'-0" x 2'-6" x 1'-6" fitted with sliding steel plate top, & having double hinged steel doors operable both sides.

Particulars of Ventilators in exposed positions on freeboard and superstructure decks:—

On fore-castle deck, 2 @ 9" dia. x 5/16" Coaming 36" to lower deck accom.
 " " " 2 @ 4" " mushroom type Coaming 8" x 1/4" screws down top.
 " " " 1 @ 6" " " " " 9" x 1/4" " "
 Upper deck forward 2 @ 7" dia. Coaming 36" x 1/4" screws down top.
 " " aft. 1 @ 12" " to E.R. Coaming 8'-6" x 5/16" efficiently stayed to machinery casing.
 " " " 1 @ 12" " " " 36" x 5/16" "
 " " " 1 @ 8" " to aft accom. Coaming 36" x 1/4" "
 " " " 2 @ 4" " " " " 36" x 1/4" screws down top.

In casing side 2P & 5 lower type vents to bunkers. Openings 4" x 5", height above upper deck 44" & fitted with brass shutters.

Vents fitted with wood plugs & canvas covers.

Particulars of Air Pipes in exposed positions on freeboard, raised quarter, or superstructure decks:—

Fore peak 3" dia. Height to opening 3'-0"
 F.W tanks 5" dia. " " " 2'-0" Height to top 3'-10"
 After peak 3" dia. " " " 3'-0"
 Gland Comp. 1 1/2" dia. " " " 3'-0"
 Fore store 1 1/2" dia. " " " 3'-0"

All pipes fitted with wood plugs & canvas covers.

" FRESHMERE "

Particulars of Gangway Cargo and Coaling Ports:—

None.

" " Skylights to F & A accom. 3'-6" x 3'-0" x 30" coaming. Strongly constructed & fitted with two hinged steel flaps secured by screw toggles. Flaps fitted with rubber joints & 3 strong glass lights 7" dia.

Particulars of Scuppers and Sanitary Discharge Pipes:— Scuppers 6P & 6S. discharge from deck.
 1 P.S. fore bath & wash place 1 1/8" dia. discharge below freeboard deck open.
 1 S.S. " " " " 2" " " " " "
 1 P & S Sanitary discharge below fore deck (fore) 4" dia. fitted with malleable C.I. storm valve.
 1 P.S. aft bath & wash place 1 1/2" dia. discharge below fore deck open.
 1 S.S. aft. Sanitary discharge below fore deck. 4" dia. fitted with malleable C.I. storm valve.

Particulars of Side Scuttles:— 3P & 3S. 9" dia. fitted in fore-castle with 1 deadlight.

2P & 2S. fixed light type 9" dia. fitted in forward cross quarters below freeboard deck, malleable C.I. deadlights.
 (All brass frames 1" glass).

Vertical distance of Sill of lowest Side Scuttle above top of keel 12'-0 3/8".

Particulars of Guard Rails:— On fore-castle deck 3'-0" high fitted with 2 wires & stretching screws. Stanchions spaced 6'-3" apart.

Particulars of Gangways, Lifelines, etc.:—

None.

Particulars of Freeing Arrangements.

	Length of Bulwark	Height of Bulwark	Size of Freeing Ports	Number each side	Area each side	Rule area each side
Fore A. After Well	102 ft.	3'-0"	2'-9" x 1'-6"	6	34.75	16.8 f
Forward Well						

State position of each freeing port ... From fore-castle bulkhead: 12'-6", 26'-6", 39'-11", 57'-1",
 (F. and A. position and height above deck edge) After Well: 72'-0" & 87'-7". 3 1/2" above deck.

State whether the freeing ports are fitted with shutters, bars, or rails, and give particulars of such:— One horizontal bar.

Additional area where sheer is less than standard.

PARTICULARS OF PROTECTION TO OPENINGS, ETC.

HATCHWAYS ON FREEBOARD AND SUPERSTRUCTURE DECKS.									
Description of Hatchway		Sing water tank hatches	10 Bosun's stove (fore deck)	...
Dimensions of Hatchway		36" x 24"	✓	36" x 30"	✓	27" x 27"	✓
COAMINGS	Height above Deck	...	18"	✓	18"	✓	18"	✓	
	Thickness	Sides Ends	...	30"	✓	30"	✓	30"	✓
	Stiffeners	...	✓	✓	✓	✓	✓	✓	
	Brackets, Stays	...	✓	✓	✓	✓	✓	✓	
HATCH BEAMS	Number	...	✓	✓	✓	✓	✓	✓	
	Spacing	...	✓	✓	✓	✓	✓	✓	
	Scantling and Sketch	...	✓	✓	✓	✓	✓	✓	
	Bearing Surface ¹	...	✓	✓	✓	✓	✓	✓	
FORE AND AFTERS	Number	...	✓	✓	✓	✓	✓	✓	
	Spacing	...	✓	✓	✓	✓	✓	✓	
	Unsupported Lengths	...	✓	✓	✓	✓	✓	✓	
	Scantling* and Sketch	...	✓	✓	✓	✓	✓	✓	
	Bearing Surface	...	✓	✓	✓	✓	✓	✓	
HATCH COVERS	Material	...	Steel	✓	Steel	✓	Steel	✓	
	Thickness	...	26"	✓	26"	✓	26"	✓	
	How fitted	...	Hinged	✓	Hinged	✓	Hinged	✓	
	Bearing Surface	...	Rubber joint	✓	Rubber joint	✓	Rubber joint	✓	
Spacing of Cleats		...	6 Toggles	✓	3 Toggles	✓	3 Toggles	✓	
Number of Tarpaulins		...	16" max.	✓	16" max.	✓	16" max.	✓	

*Are wood fore and afters steel shod at all bearing surfaces ?

Are battens and wedges efficient and in good condition ?

Are tarpaulins in good condition and in accordance with rule requirements ?

Are lashings provided in accordance with rule requirements ?

Particulars of any special features:—

any special features:— Vessel is constructed as a special water tank vessel. Omit

Endorsement at first survey and at surveys for renewal of Certificate :—

The fittings and appliances are in accordance with the particulars shown on this form (or as now modified) and are in good condition.