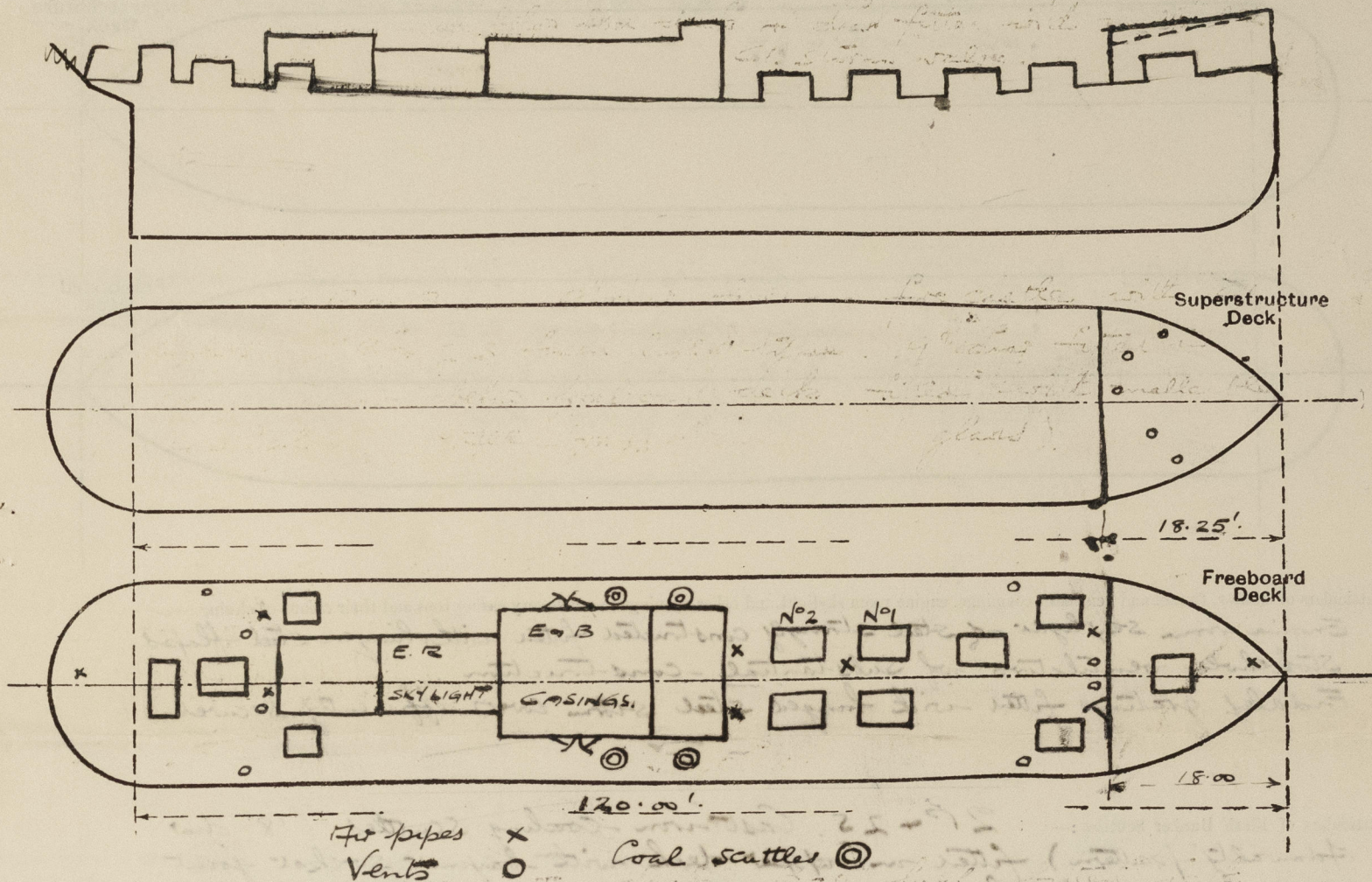


Lloyd's Register of Shipping.
SURVEYS FOR FREEBOARD.
(CONDITIONS OF ASSIGNMENT.)

765379

Ship's Name FRESH BURN. Port of Survey Lylham (Liverpool)
Official Number _____ Surveyor's Signature Harry S. Newton
Nationality and Port of Registry British, London. Date of Survey During construction.

Disposition and dimensions of superstructures, trunks, deckhouses and machinery casings to be inserted in the diagrams and tabular statement :-



Particulars of Superstructures, Trunks, Casings, Deckhouses.

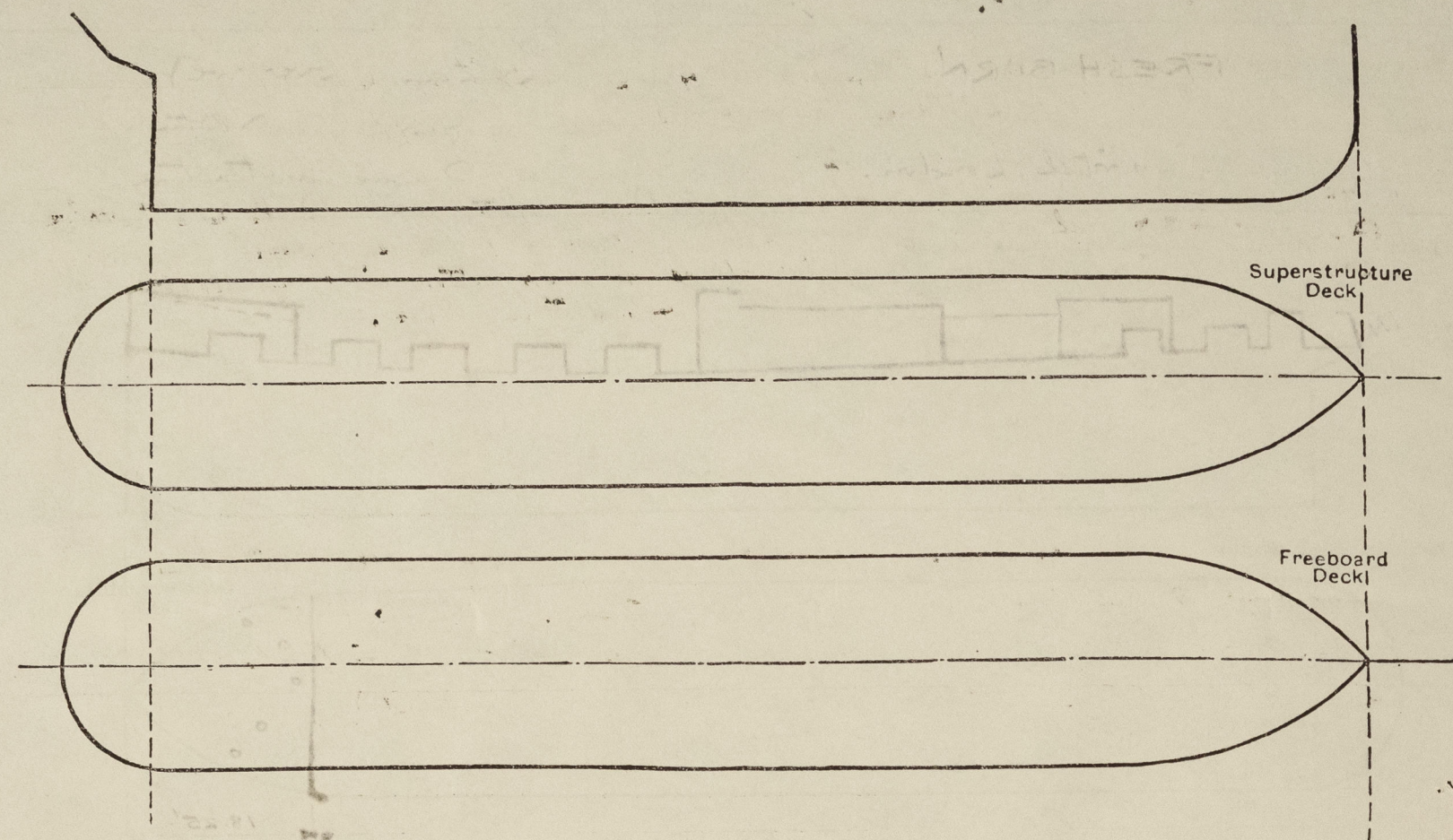
	Coaming	Plating	Stiffeners	Spacing	End Attachments of Stiffeners	Size of Openings	Height of Sills	Height of Casings
Poop Bulkhead ...								
Raised Quarter Deck Bulkhead ...								
Bridge, After Bulkhead ...								
Bridge, Forward Bulkhead ...	14" x 25"	20"	3" x 2" x 25"	25" to 30"	Reveler to bowlap angles.	4'9" x 2'0"	14"	6'6"
Forecastle Bulkhead ...								
Trunk, Aft ...								
Trunk, Forward ...								
Exposed Machinery Casings on Freeboard or Raised Quarter Decks ...	18" x 32"	27"	3" x 2 1/2" x 30"	30"	32 1/2" as top only.	4'6" x 2'0"	20"	7'0" to 3'9"
Exposed Machinery Casings on Superstructure Decks ...								
Machinery Casings within Superstructures not fitted with Class I Closing Appliances ...								
Deckhouses on Flush Deck Ships ...								

Particulars of Closing Appliances (state if capable of being manipulated from both sides).

Poop Bulkhead ...	
Raised Quarter Deck Bulkhead ...	
Bridge, After Bulkhead ...	
Bridge, Forward Bulkhead ...	
Forecastle Bulkhead ...	Steel hinged door operated both sides ✓
Exposed Machinery Casings on Freeboard or Raised Quarter Decks ...	4 steel hinged doors to machinery & boiler rooms operated both sides ✓
Exposed Machinery Casings on Superstructure Decks ...	
Machinery Casings within Superstructures not fitted with Class I Closing Appliances ...	
Deckhouses on Flush Deck Ships ...	

PARTICULARS OF PROTECTION TO OPENINGS, ETC.

The following diagrams should be used to indicate the positions of cargo and coaling hatchways, gangway, cargo and coaling ports, ventilators, companionways, etc., which would affect the seaworthiness of the ship:—



Particulars of fiddle, funnel and ventilator coamings, engine room skylight and other openings in machinery casing tops and their means of closing:—

Engine room skylight of steel strongly constructed fitted with hinged steel flaps
Stokeholder ventilators of substantial construction
Fiddle gratings fitted with hinged steel storm covers efficiently secured.

Particulars of Flush Bunker Scuttles:— 2 P & 25. Cast iron Coaling Scuttles (18" dia. internally pattern) fitted in upper deck with bayonet socket joint. Lids secured by chains.

Particulars of Companionways:— For gurney access to tween deck accommodation. Steel strongly constructed 3'-0" x 2'-6" x 1'-6" fitted with sliding steel plate top & having double hinged steel doors operable both sides.

Particulars of Ventilators in exposed positions on freeboard and superstructure decks:—

On fore-castle deck 2 @ 9" dia. x 5/16" Coaming 36" to lower deck accom.
" " " 2 @ 4" " mushroom-type coaming 8" x 1/2" secured down top.
" " " 1 @ 6" " " " 9" x 1/2" " "
Upper deck forward 2 @ 7" dia. Coaming 36" x 1/2" Sec'd down top
" " " 1 @ 12" " to BR Coaming 8 1/2" x 5/8" efficiently stayed to machinery casing.
" " " 1 @ 12" " " " 36" x 1/2" "
" " " 1 @ 8" " aft accom. Coaming 36" x 1/2" "
" " " 2 @ 4" " " " 36" x 1/2" Sec'd down top.
In casing side 2 P & 25 lower type vents to bunkers. Openings 4" x 5" height above upper deck 1 1/2" & fitted with brass shutters.
Vents fitted with wood plugs & canvas covers.

Particulars of Air Pipes in exposed positions on freeboard, raised quarter, or superstructure decks:—

Fore peak 3" dia. Height to opening 3'-0"
F.W. tanks 5" " " " 2'-0" Ht to top 3'-10"
Aft peak 3" " " " 3'-0"
Gland coffer 1 1/2" " " " 3'-0"

Air pipes fitted with wood plugs & canvas covers.

Particulars of Gangway Cargo and Coaling Ports:—

None.
" " Skylights to Accom (F & A) 3'-6" x 3'-0" x 30" Coaming strongly constructed & fitted with two hinged steel flaps secured by screw toggles. Flaps fitted with 3 strong glass lights 7" dia.

Particulars of Scuppers and Sanitary Discharge Pipes:— Scuppers 6 P & 6 S discharge from deck.

1 P S fore. bath & wash place 1 1/8" dia discharge below foreboard deck open

1 S S " " " " 2" " " " " " " "

1 P S Sanitary discharge below fore deck (ford) 4" dia fitted with malleable CI storm valve

1 P S aft bath & wash place 1 1/2" dia discharge below fore deck open.

1 S S " Sanitary discharge below fore deck 4" dia fitted with malleable CI storm valve.

Particulars of Side Scuttles:— 3 P & 3 S. 9" dia fitted in fore-castle with CI deadlights, 2 P & 2 S fixed light type. 9" dia fitted in fore. O/S quarters below freeboard deck, fitted with malleable CI deadlights. (17 lb brass frames 1" glass.)

Vertical distance of Sill of lowest Side Scuttle above top of keel

12'-0 3/8"

Particulars of Guard Rails:— On fore-castle deck 3'-0" high infilled with 2 wires & stretching screws. Stanchions spaced 6'-3" apart.

Particulars of Gangways, Lifelines, etc.:—

None.

Particulars of Freeing Arrangements.

	Length of Bulwark	Height of Bulwark	Size of Freeing Ports	Number each side	Area each side	Rule area each side
Fore-castle Well	102 ft.	3'-0"	2'-9" x 1'-6"	6	24.75	16.84
Forward Well						
State position of each freeing port ... (F. and A. position and height above deck edge)						
State whether the freeing ports are fitted with shutters, bars, or rails, and give particulars of such:—						
Additional area where sheer is less than standard.						

From fore-castle bulkhead: 12'-6" & 26'-6", 39'-11", 54'-1"
Fore-castle Well: 72'-0" & 84'-7", 3 1/2" above deck.

One horizontal bar.

PARTICULARS OF PROTECTION TO OPENINGS, ETC.

HATCHWAYS ON FREEBOARD AND ON DECK DECKS.									
Description of Hatchway	
Dimensions of Hatchway	
COAMINGS	Height above Deck
	Thickness
	Sides
	Ends
Stiffeners	
Brackets, Stays	
HATCH BEAMS	Number
	Spacing
	Scantling and Sketch
	Bearing Surface
FORE AND AFTERS	Number
	Spacing
	Unsupported Lengths
	Scantling* and Sketch
Bearing Surface	
HATCH COVERS	Material
	Thickness
	How fitted
	Bearing Surface
Spacing of Cleats	
Number of Tarpaulins	

*Are wood fore and afters steel shod at all bearing surfaces?
 Are battens and wedges efficient and in good condition?
 Are tarpaulins in good condition and in accordance with rule requirements?
 Are lashings provided in accordance with rule requirements?

Particulars of any special features:— *Vessel is constructed as a special water tank vessel.*

Endorsement at first survey and at surveys for renewal of Certificate:—

The fittings and appliances are in accordance with the particulars shown on this form (or as now modified) and are in good condition.



© 2021

Lloyd's Register Foundation