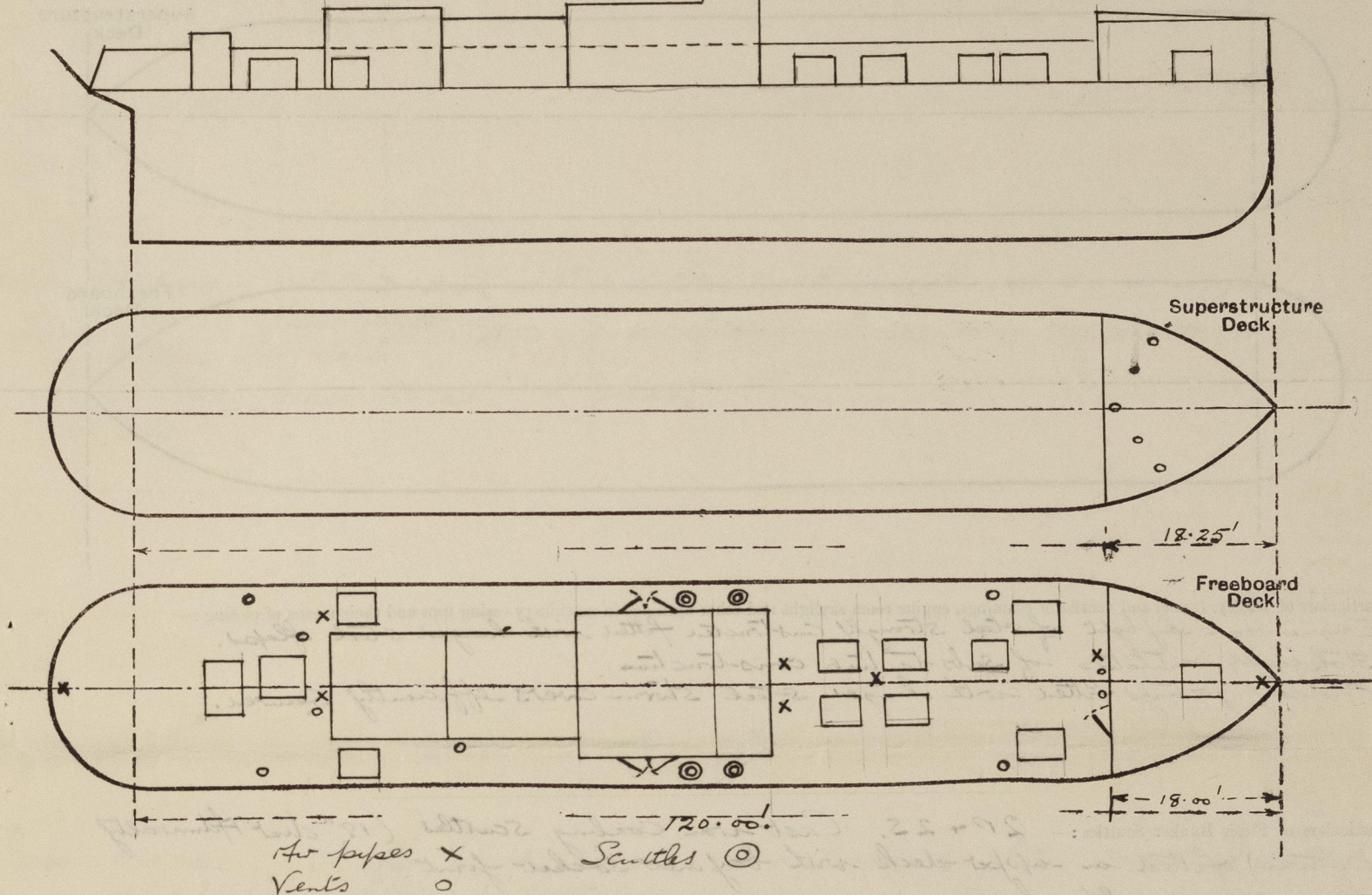


Lloyd's Register of Shipping.  
SURVEYS FOR FREEBOARD. 26d 5094.  
(CONDITIONS OF ASSIGNMENT.)

Ship's Name FRESHPOOL Port of Survey Lytham.  
Official Number 168463. Surveyor's Signature Harry S. Newton  
Nationality and Port of Registry British, London Date of Survey During construction

Disposition and dimensions of superstructures, trunks, deckhouses and machinery casings to be inserted in the diagrams and tabular statement:—

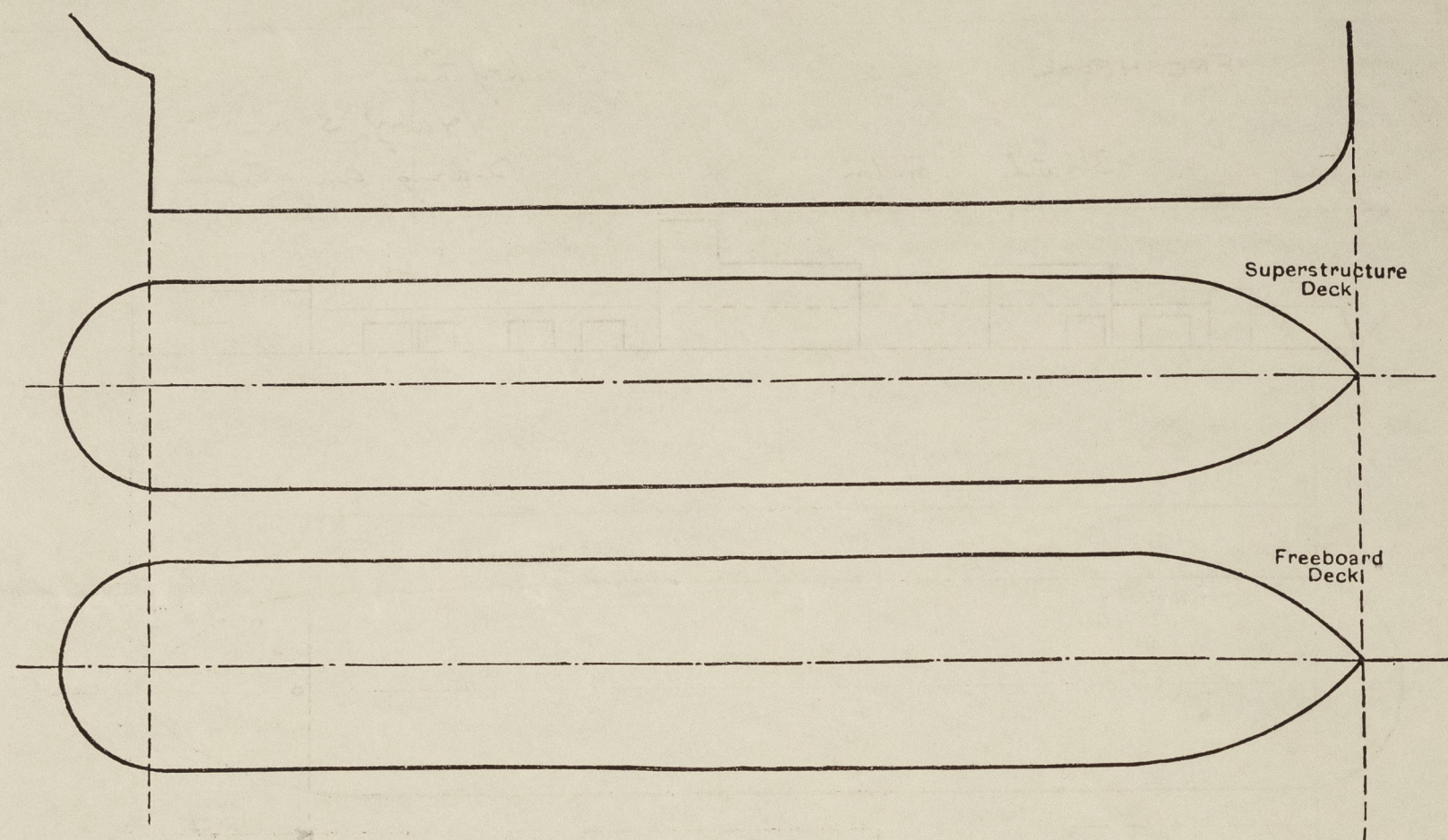


| Particulars of Superstructures, Trunks, Casings, Deckhouses.                               |           |         |                     |            |                                |                  |                 |                   |
|--|-----------|---------|---------------------|------------|--------------------------------|------------------|-----------------|-------------------|
|  | Coaming   | Plating | Stiffeners          | Spacing    | End Attachments of Stiffeners  | Size of Openings | Height of Sills | Height of Casings |
| Poop Bulkhead ... ..   |           |         |                     |            |                                |                  |                 |                   |
| Raised Quarter Deck Bulkhead ...   |           |         |                     |            |                                |                  |                 |                   |
| Bridge, After Bulkhead ... ..  |           |         |                     |            |                                |                  |                 |                   |
| Bridge, Forward Bulkhead ... ..  |           |         |                     |            |                                |                  |                 |                   |
| Forecastle Bulkhead ... ..   | 14" x 25" | 20"     | 3" x 2' x 25" L     | 25" to 30" | Reinforced to boundary angles. | 4'-9" x 2'-0"    | 14"             | 6'-6"             |
| Trunk, Aft ... ..  |           |         |                     |            |                                |                  |                 |                   |
| Trunk, Forward ... ..  |           |         |                     |            |                                |                  |                 |                   |
| Exposed Machinery Casings on Freeboard or Raised Quarter Deck ...                          | 18" x 32" | 27"     | 3" x 2 1/2" x 30" L | 30"        | 3/4" to 1" at top only.        | 4'-6" x 2'-0"    | 20"             | 7'-0" & 3'-9"     |
| Exposed Machinery Casings on Superstructure Decks ... ..                                   |           |         |                     |            |                                |                  |                 |                   |
| Machinery Casings within Superstructures not fitted with Class I Closing Appliances ... .. |           |         |                     |            |                                |                  |                 |                   |
| Deckhouses on Flush Deck Ships ...   |           |         |                     |            |                                |                  |                 |                   |

| Particulars of Closing Appliances (state if capable of being manipulated from both sides). |   |
|--|---|
| Poop Bulkhead ... ..   |   |
| Raised Quarter Deck Bulkhead ...   |   |
| Bridge, After Bulkhead ... ..  |   |
| Bridge, Forward Bulkhead ... ..  |   |
| Forecastle Bulkhead ... ..   | 5-Steel hinged door (operated both sides)                               |
| Exposed Machinery Casings on Freeboard or Raised Quarter Deck ...                          | 4 steel hinged doors to machinery & boiler spaces, operated both sides. |
| Exposed Machinery Casings on Superstructure Decks ... ..                                   |   |
| Machinery Casings within Superstructures not fitted with Class I Closing Appliances ... .. |   |
| Deckhouses on Flush Deck Ships ...   |   |

## PARTICULARS OF PROTECTION TO OPENINGS, ETC.

The following diagrams should be used to indicate the positions of cargo and coaling hatchways, gangway, cargo and coaling ports, ventilators, companionways, etc., which would affect the seaworthiness of the ship:—



Particulars of fiddley, funnel and ventilator coverings, engine room skylight and other openings in machinery casing tops and their means of closing:—  
 Engine room skylight of steel strong<sup>1</sup> construction fitted with hinged steel flaps. ✓  
 Stoker's ventilator of substantial construction. ✓  
 Fiddley gratings fitted with hinged steel storm covers efficiently secured.

Particulars of Flush Bunker Scuttles:— 2P + 25. Cast-iron Coaling Scuttles (18" dia Admiralty pattern) fitted in upper deck with bay net socket joint.  
Lids secured by chains. ✓

Particulars of Companionways:— Above giving access to tween deck accommodation. Steel strongly constructed 3'6" x 2'6" x 1'6" fitted with sliding steel plate top & having double hinged steel doors operated both sides. ✓

Particulars of Ventilators in exposed positions on freeboard and superstructure decks :-

|                     |             |   |  |   |
|---------------------|-------------|---|--|---|
| On fire-castle deck | 2 @ 9" dia. | $\times \frac{5}{16}$ Coaming 36"                 | to lower-deck accorn.                      | ✓ |
| " " "               | 2 @ 4" "    | " mushroom type Coaming 8" $\times \frac{1}{4}$ " | Screw down-top                             | ✓ |
| " " "               | 1 @ 6" "    | " " " 9" $\times \frac{1}{4}$ "                   | " " "                                      | ✓ |
| Upper-deck forward  | 2 @ 7" dia. | Coaming 36" $\times \frac{1}{4}$ "                | Screw down-top                             | ✓ |
| " " aft             | 1 @ 12" "   | to E. R Coaming 8'-6" $\times \frac{5}{16}$ "     | efficiently staggered to machinery casing. | ✓ |
| " " "               | 1 @ 12" "   | " " 36" $\times \frac{5}{16}$ "                   | " " "                                      | ✓ |
| " " "               | 1 @ 8" "    | ft accorn. Coaming 36" $\times \frac{1}{4}$ "     | " " "                                      | ✓ |
| " " "               | 2 @ 4" "    | " " " 36" $\times \frac{1}{4}$ "                  | Screw down-top.                            | ✓ |

In casing Sule 2P & 25 lower type vents to bunkers. Openings 4" x 5" height above upper deck 44" & fitted with brass shutters. ✓  
Vents fitted with wood plugs & canvas covers. ✓

Particulars of Air Pipes in exposed positions on freeboard, raised quarter, or superstructure decks :—

| Particulars of All Pipes in exposed sections of the main, 1904-1905 |          |                   |         |
|---|----------|-------------------|---------|
| Fire peak   | 3" dia.  | Height to opening | 3'-0" ✓ |
| F.W. tanks  | 5" "     | " " "             | 2'-0" ✓ |
| Off air peak  | 3" "     | " " "             | 3'-0" ✓ |
| Glaze cap.  | 1 1/2" " | " " "             | 3'-0" ✓ |

the pipes fitted with wood plugs & canvas covers. ✓

Particulars of Gangway Cargo and Coaling Ports:— *None* ✓

Particulars of Gangway Cargo and Coaling Ports:—

" " Skylights to F & A accom. 3'-6" x 3'-0" x 30"-coaming. Strongly constructed & fitted with two hinged steel flaps secured by screwed toggles. Flaps fitted with rubber joints & 3 strong glass lights 7" diam. ✓

Particulars of Scupper and Sanitary Discharge Pipes:—

|       |                         |                       |  |   |
|-------|-------------------------|-----------------------|--|---|
|       | Sappers                 | 67 & 65               | dis charge from deck.                          | ✓ |
| 1 P.S | ford bath & wash place  | 1½"                   | diam discharge below foremast deck open        | ✓ |
| 1 S.S | " "                     | 2"                    | " " " "  | ✓ |
| 1 P+S | Sanitary discharge      | below fld deck (form) | 4" diam fitted with malleable C I storm valve  | ✓ |
| 1 P.S | aft bath & wash place   | 1½"                   | diam discharge below fld deck open.            | ✓ |
| 1 S.S | aft sanitary dis charge | below fld. deck       | 4" diam fitted with malleable C I storm valve. | ✓ |

Particulars of Side Scuttles:— 3P & B.S. 9" door fitted in fore castle with C.I. deadlights.  
2P & 2S finer light type. 9" door fitted in forward crew quarters below  
foremast floor deck. 3 deadlights M.C.I. Deadlights?  
(All brass frames 1" glass)

Vertical distance of Sill of lowest Side Scuttle above top of keel..... 12' - 0 <sup>3</sup>/<sub>8</sub>"

Particulars of Guard Rails:— On fore castle deck 3'-0" high fitted with 2 wires  
 & stretching screws. Stanchions spaced 6'-3" apart. ✓

Particulars of Gangways, Lifelines, etc. :—

| Particulars of Freeing Arrangements.  |                   |                   |                       |                  |                |                     |
|---|-------------------|-------------------|-----------------------|------------------|----------------|---------------------|
|   | Length of Bulwark | Height of Bulwark | Size of Freeing Ports | Number each side | Area each side | Rule area each side |
| <del>F&amp;A.</del><br>After Well ... ..  | 102 ft.           | 3'-0"             | 2'-9" x 1'-6"         | 6.               | 24.75 f        | 16.8 f              |
| <del>Forward Well</del> ... ..  |                   |                   |                       |                  |                |                     |
| State position of each freeing port ... .. { <div style="display: inline-block; vertical-align: middle;"> <del>After Well :-</del> </div> <div style="display: inline-block; vertical-align: middle;"> <i>From fore castle bulkhead :- 12'-6", 26'-6", 37'-11", 57'-1"</i><br/> <i>72'-0" &amp; 87'-7". 3 1/2' above deck. ✓</i> </div> |                   |                   |                       |                  |                |                     |
| (F. and A. position and height above deck edge) { <div style="display: inline-block; vertical-align: middle;"> <del>Forward Well :-</del> </div>  |                   |                   |                       |                  |                |                     |
| State whether the freeing ports are fitted with shutters, bars, or rails, and give particulars of such :- <i>One horizontal bar. ✓</i>  |                   |                   |                       |                  |                |                     |
| Additional area where sheer is less than standard.  |                   |                   |                       |                  |                |                     |

# PARTICULARS OF PROTECTION TO OPENINGS, ETC.

| HATCHWAYS ON FREEBOARD AND SUPERSTRUCTURE DECKS.   |                       |                         |   |                    |   |                              |   |  |  |
|--|-----------------------|-------------------------|---|--------------------|---|------------------------------|---|--|--|
| Description of Hatchway  |                       | Side water tank hatches |   | Under fire castle  |   | To Bosun's store (fire deck) |   |  |  |
| Dimensions of Hatchway   |                       | 36" x 24" ✓             |   | 36" x 30"          |   | 27" x 27" ✓                  |   |  |  |
| COAMINGS   | Height above Deck     | 18"                     | ✓ | 18"                |   | 18"                          |   |  |  |
|  | Thickness             | .30"                    | ✓ | .30"               | ✓ | .30"                         |   |  |  |
|  | Stiffeners            | ✓                       |   | ✓                  |   | ✓                            | ✓ |  |  |
|  | Brackets, Stays       | ✓                       |   | ✓                  |   | ✓                            |   |  |  |
| HATCH BEAMS  | Number                |                         |   |                    |   |                              |   |  |  |
|  | Spacing               |                         |   |                    |   |                              |   |  |  |
|  | Scantling and Sketch  |                         |   |                    |   |                              |   |  |  |
|  | Bearing Surface       |                         |   |                    |   |                              |   |  |  |
| FORE AND AFTERS  | Number                |                         |   |                    |   |                              |   |  |  |
|  | Spacing               |                         |   |                    |   |                              |   |  |  |
|  | Unsupported Lengths   |                         |   |                    |   |                              |   |  |  |
|  | Scantling* and Sketch |                         |   |                    |   |                              |   |  |  |
| HATCH COVERS   | Material              | Steel                   |   | Steel              |   | Steel                        |   |  |  |
|  | Thickness             | .26"                    |   | .26"               | ✓ | .26"                         | ✓ |  |  |
|  | How fitted            | Angal rubber joint      | ✓ | Angal rubber joint |   | Angal rubber joint           |   |  |  |
|  | Bearing Surface       |                         |   |                    |   |                              |   |  |  |
| Spacing of Cleats  |                       | 6 Toggles               |   | 3 Toggles          |   | 3 Toggles                    |   |  |  |
| Number of Tarpaulins   |                       | Spaced 16" max.         |   | Spaced 16" max.    |   | Spaced 16" max.              |   |  |  |
| <p>*Are wood fore and afters steel shod at all bearing surfaces?</p> <p>Are battens and wedges efficient and in good condition?</p> <p>Are tarpaulins in good condition and in accordance with rule requirements?</p> <p>Are lashings provided in accordance with rule requirements?</p> |                       |                         |   |                    |   |                              |   |  |  |

Particulars of any special features:—

Vessel is constructed as a special water tank vessel.

Endorsement at first survey and at surveys for renewal of Certificate:—

The fittings and appliances are in accordance with the particulars shown on this form (or as now modified) and are in good condition.



© 2021

Lloyd's Register Foundation