

23 JUN 1944

Lloyd's Register of Shipping.

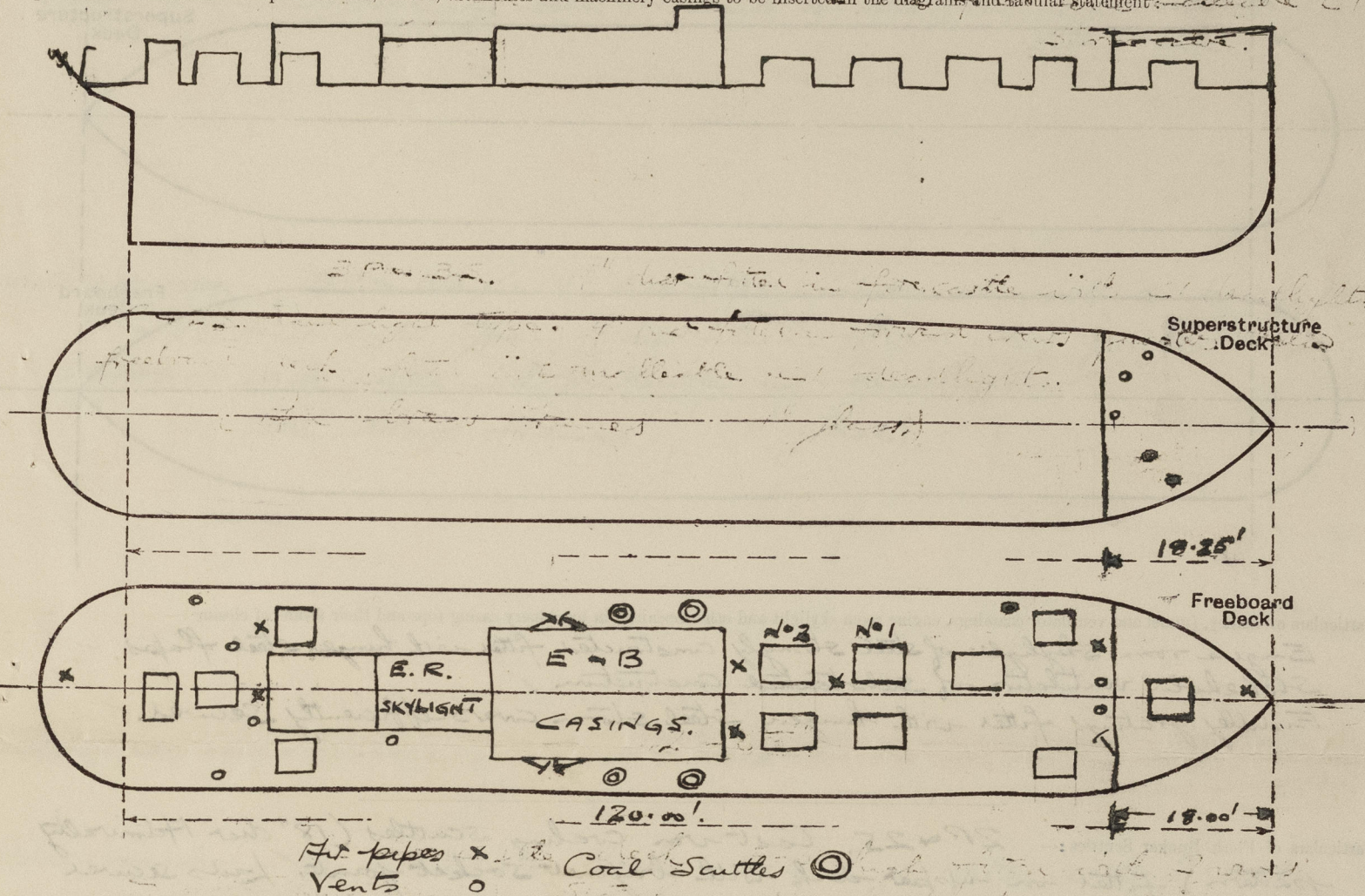
Index No. 37660
(For London Office only).

SURVEYS FOR FREEBOARD.

(CONDITIONS OF ASSIGNMENT.)

Ship's Name *Freshford.*Port of Survey *Liverpool*Official Number *169906*Surveyor's Signature *Harry S. Newton*Nationality and Port of Registry *British*Date of Survey *20th building*

Disposition and dimensions of superstructures, trunks, deckhouses and machinery casings to be inserted in the diagrams and tabular statement.



Particulars of Superstructures, Trunks, Casings, Deckhouses.

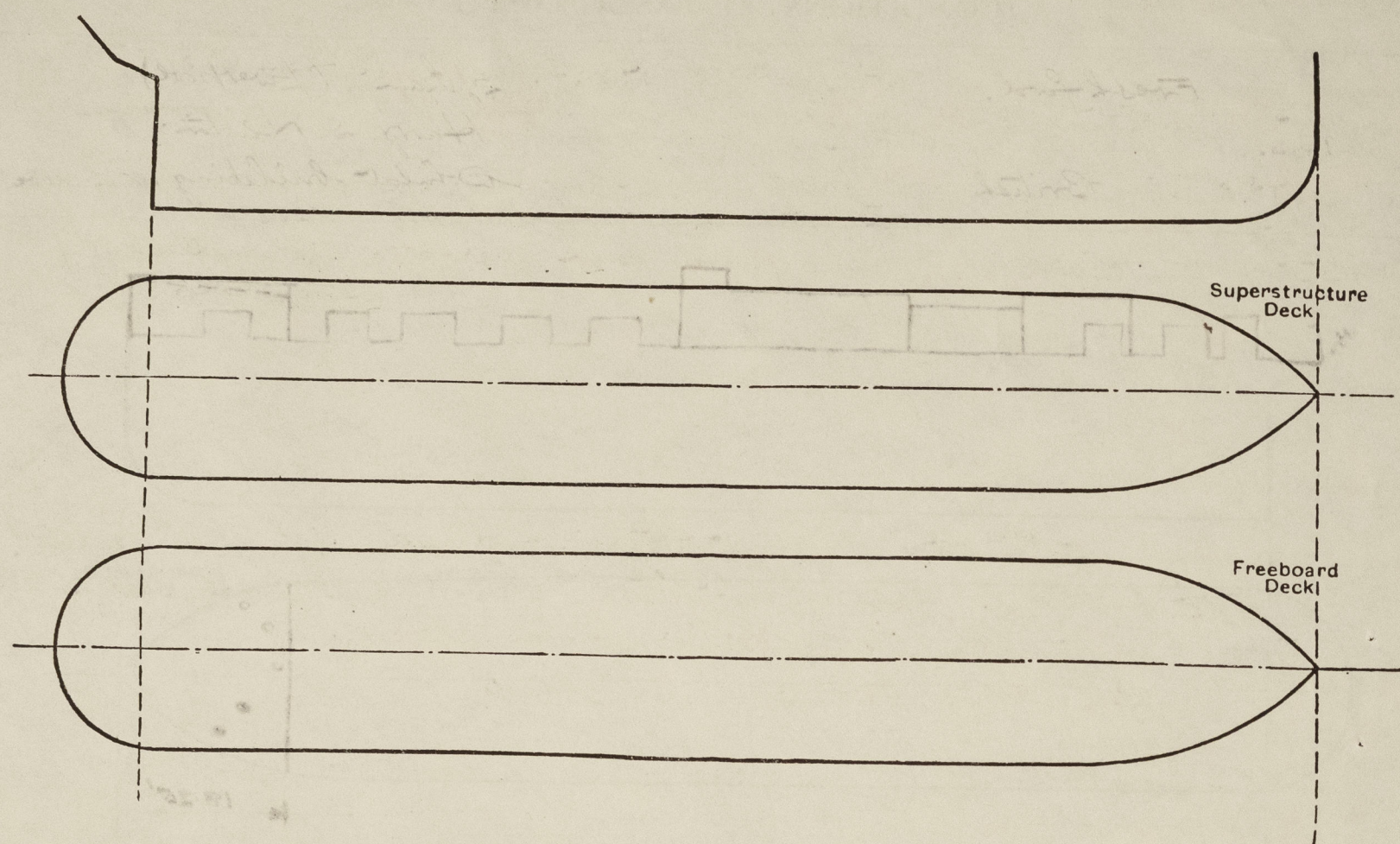
	Coaming	Plating	Stiffeners	Spacing	End Attachments of Stiffeners	Size of Openings	Height of Sills	Height of Casings
Poop Bulkhead ...								
Raised Quarter Deck Bulkhead ...								
Bridge, After Bulkhead ...								
Bridge, Forward Bulkhead ...								
Forecastle Bulkhead ...	14" x 25"	20"	3" x 2" x 25"	25" to 30"	Riveted to boundary angles	4' 9" x 2' 0"	14"	6' 6"
Trunk, Aft ...								
Trunk, Forward ...								
Exposed Machinery Casings on Freeboard or Raised Quarter Decks ...	18" x 32"	27"	3" x 2 1/2" x 30"	30"	13kts at 15kts only	4' 6" x 2' 0"	20"	7' 0" x 3' 9"
Exposed Machinery Casings on Superstructure Decks ...								
Machinery Casings within Superstructures not fitted with Class I Closing Appliances ...								
Deckhouses on Flush Deck Ships ...								

Particulars of Closing Appliances (state if capable of being manipulated from both sides).

Poop Bulkhead ...	
Raised Quarter Deck Bulkhead ...	
Bridge, After Bulkhead ...	
Bridge, Forward Bulkhead ...	
Forecastle Bulkhead ...	5-steel hinged door operated both sides. ✓
Exposed Machinery Casings on Freeboard or Raised Quarter Decks ...	4 steel hinged doors to machinery & boiler rooms operated both sides. ✓
Exposed Machinery Casings on Superstructure Decks ...	
Machinery Casings within Superstructures not fitted with Class I Closing Appliances ...	
Deckhouses on Flush Deck Ships ...	

PARTICULARS OF PROTECTION TO OPENINGS, ETC.

The following diagrams should be used to indicate the positions of cargo and coaling hatchways, gangway, cargo and coaling ports, ventilators, companionways, etc., which would affect the seaworthiness of the ship :-



Particulars of fiddle, funnel and ventilator coamings, engine room skylight and other openings in machinery casing tops and their means of closing :-

Engine room skylight of steel strongly constructed fitter with hinged steel flaps.
Stokehole ventilator of substantial construction.
Fiddle gratings fitter with hinged steel storm covers efficiently secured.

Particulars of Flush Bunker Scuttles :- 2P & 25. Cast-iron coaling scuttles (18" dia Admiralty pattern). fitter on upper deck with bayonet socket joints. Lids secured by chain.

Particulars of Companionways :- Aft gurny access to tween deck accommodation. Steel strongly constructed 3'0" x 2'6" x 1'6" fitter with sliding steel plate top & heavy double hinged steel doors operable both sides.

Particulars of Ventilators in exposed positions on freeboard and superstructure decks :-

On fore castle deck 2 @ 9" dia x 7/16" Coaming 36" to lower deck accm.
" " " 2 @ 4" " N.V. " 8" x 1/4" screw down top.
" " " 1 @ 6" " " " 9" x 1/4" " "
" upper deck fore. 2 @ 7" " Coaming 36" x 1/4" screw down top.
" " " aft. 1 @ 12" " 5ER Coaming 8'6" x 5/16" efficiently stayer to machinery casing.
" " " " 1 @ 12" " " " 36" x 5/16"
" " " " 1 @ 8" " aft accm. Coaming 36" x 1/4".
" " " " 2 @ 16" " " " 36" x 1/4" screw down top.
In casing side 2P & 25. lower type vents to bunkers. Openings 4" x 5"
Hinged above upper deck 4" x 4" fitter with brass shutters.
Ventilators fitter with wood plugs & canvas covers.

Particulars of Air Pipes in exposed positions on freeboard, raised quarter, or superstructure decks :-

Forepeak 3" dia. Height to opening 3'0".
F.W. tanks 5" " " " 2'0" Height to top 3'10".
Aft. peak 3" " " " 3'0".
Gland amp. 1 1/2" " " " 3'0".

Air pipes fitter with wood plugs & canvas covers.

FRESHFORD.

Particulars of Gangway Cargo and Coaling Ports :-

None.
" Skylights to Accm (F & A) 3'6" x 3'0" x 30" Coaming. Strongly constructed & fitter with two hinged steel flaps secured by screw toggles. Flaps fitter with rubber joints & 3 strong glass lights 7" dia.

Particulars of Scuppers and Sanitary Discharge Pipes :-

Scuppers 6P & 65. discharge from deck.
1 PS fore bath & wash place 1 1/2" dia discharge below freeboard deck open.
1 S.S. " " " " 2" " " " " "
1 PS sanitary discharge below fore deck (fore) 1/4" dia fitter with malleable C1 storm valve.
1 PS aft bath & wash place 1 1/2" dia discharge below fore deck open.
1 S.S. " sanitary discharge below fore deck 1/4" dia fitter with malleable C1 storm valve.

Particulars of Side Scuttles :-

3P & 35. 9" dia fitter in fore castle with C1 deadlight.
2P & 25 fixed light type. 9" dia fitter in forward crew's quarters below freeboard deck, fitter with malleable C1 deadlight.
(All brass frames 1" glass).

Vertical distance of Sill of lowest Side Scuttle above top of keel

12' 0 1/2".

Particulars of Guard Rails :-

On fore castle deck 3'0" high fitter with 2 wires & stretching screws. Stanchions spaced 6'3" apart.

Particulars of Gangways, Lifelines, etc. :-

None.

Particulars of Freeing Arrangements.

	Length of Bulwark	Height of Bulwark	Size of Freeing Ports	Number each side	Area each side	Rule area each side
FEA Well	102 ft.	3'0"	2'9" x 1'6"	6.	24.75 sq	16.8 sq
Forward Well						

State position of each freeing port { From fore castle bulkhead : 12'6", 26'6", 39'11",
(F. and A. position and height above deck edge) Forward Well :- 57'1", 72'0" & 87'4". 3 1/2" above deck.

State whether the freeing ports are fitted with shutters, bars, or rails, and give particulars of such :- One hinged steel bar.

Additional area where sheer is less than standard.

PARTICULARS OF PROTECTION TO OPENINGS, ETC.

HATCHWAYS ON FREEBOARD AND SUPERSTRUCTURE DECKS.									
Description of Hatchway			Sea water tanks hatches	Under forecastle	To Bunks store (fore deck)				
Dimensions of Hatchway			36" x 24"	36" x 30"	27" x 27"				
COAMINGS	{	Height above Deck	18" ✓	18" ✓	18" ✓				
		Thickness { Sides	.30" ✓	.30" ✓	.30" ✓				
		Ends							
		Stiffeners				✓	✓	✓	
		Brackets, Stays	✓	✓	✓				
HATCH BEAMS	{	Number	✓	✓	✓				
		Spacing	✓	✓	✓				
		Scantling and Sketch	✓	✓	✓				
		Bearing Surface	✓	✓	✓				
FORE AND AFTERS	{	Number	✓	✓	✓				
		Spacing	✓	✓	✓				
		Unsupported Lengths	✓	✓	✓				
		Scantling* and Sketch	✓	✓	✓				
		Bearing Surface	✓	✓	✓				
HATCH COVERS	{	Material	Steel	Steel	Steel				
		Thickness	.26"	.26"	.26"				
		How fitted	Hinged rubber joint 6 Toggles ✓	Hinged rubber joint 3 Toggles ✓	Hinged Rubber joint 3 Toggles ✓				
		Bearing Surface	Spaced 16" max	Spaced 16" max	3 Toggles spaced 16" max ✓				
Spacing of Cleats			✓	✓	✓				
Number of Tarpaulins			✓	✓	✓				

*Are wood fore and afters steel shod at all bearing surfaces ?

Are battens and wedges efficient and in good condition ?

Are tarpaulins in good condition and in accordance with rule requirements ?

Are lashings provided in accordance with rule requirements ?

Particulars of any special features:—

Vessel is constructed as a special tank vessel. ✓

Endorsement at first survey and at surveys for renewal of Certificate:—

The fittings and appliances are in accordance with the particulars shown on this form (or as now modified) and are in good condition.

[illegible]

© 2021

Lloyd's Register
Foundation