

Lloyd's Register of Shipping.
SURVEYS FOR FREEBOARD.
(CONDITIONS OF ASSIGNMENT.)

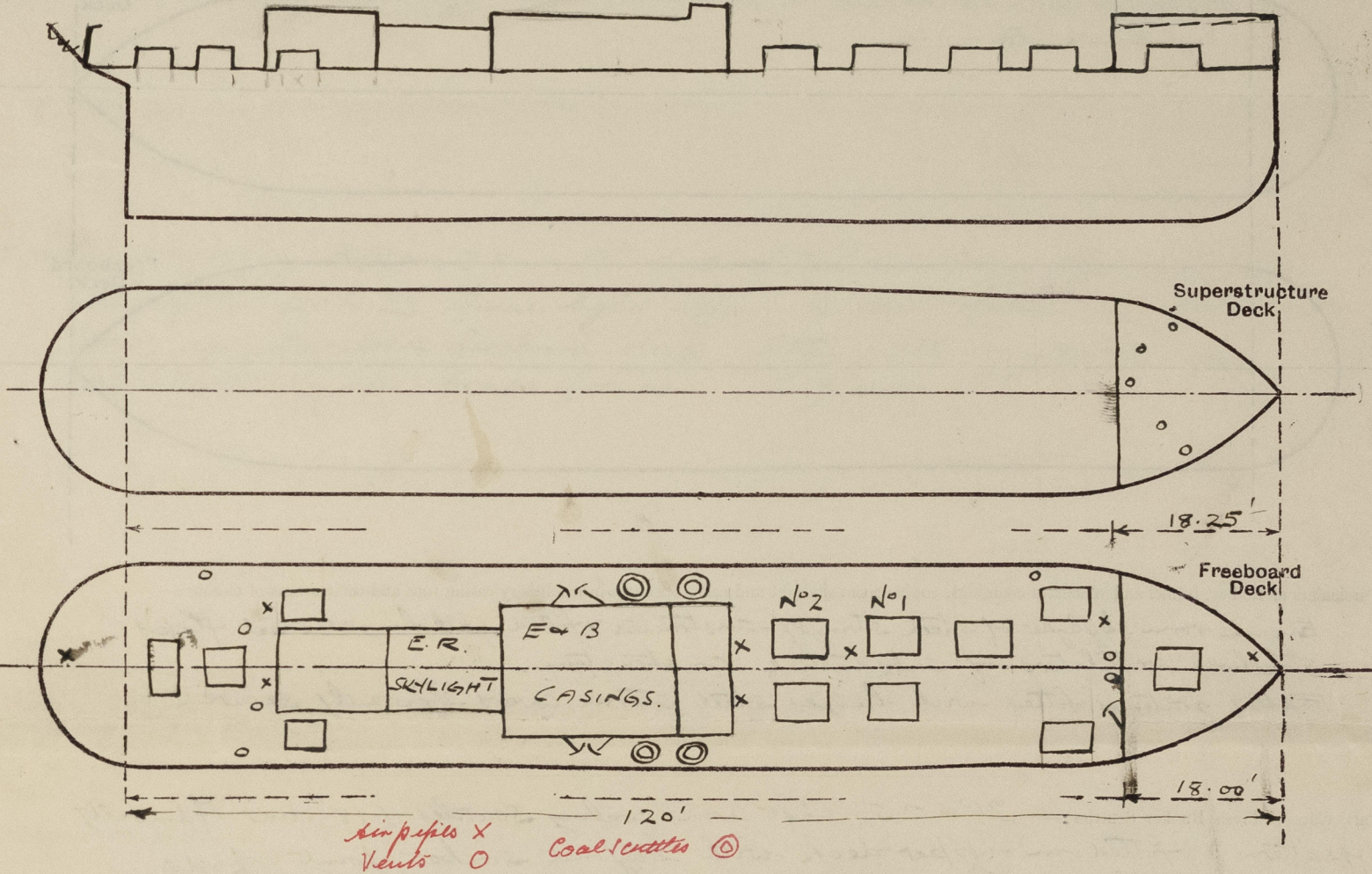
Index No. 37802
(For London Office only).

16 NOV 1941

Ed 5680.

Ship's Name	FRESH TARN	Port of Survey	Lytham (Liverpool)
Official Number	169994	Surveyor's Signature	Harry S. Newton
Nationality and Port of Registry	British, London	Date of Survey	During construction.

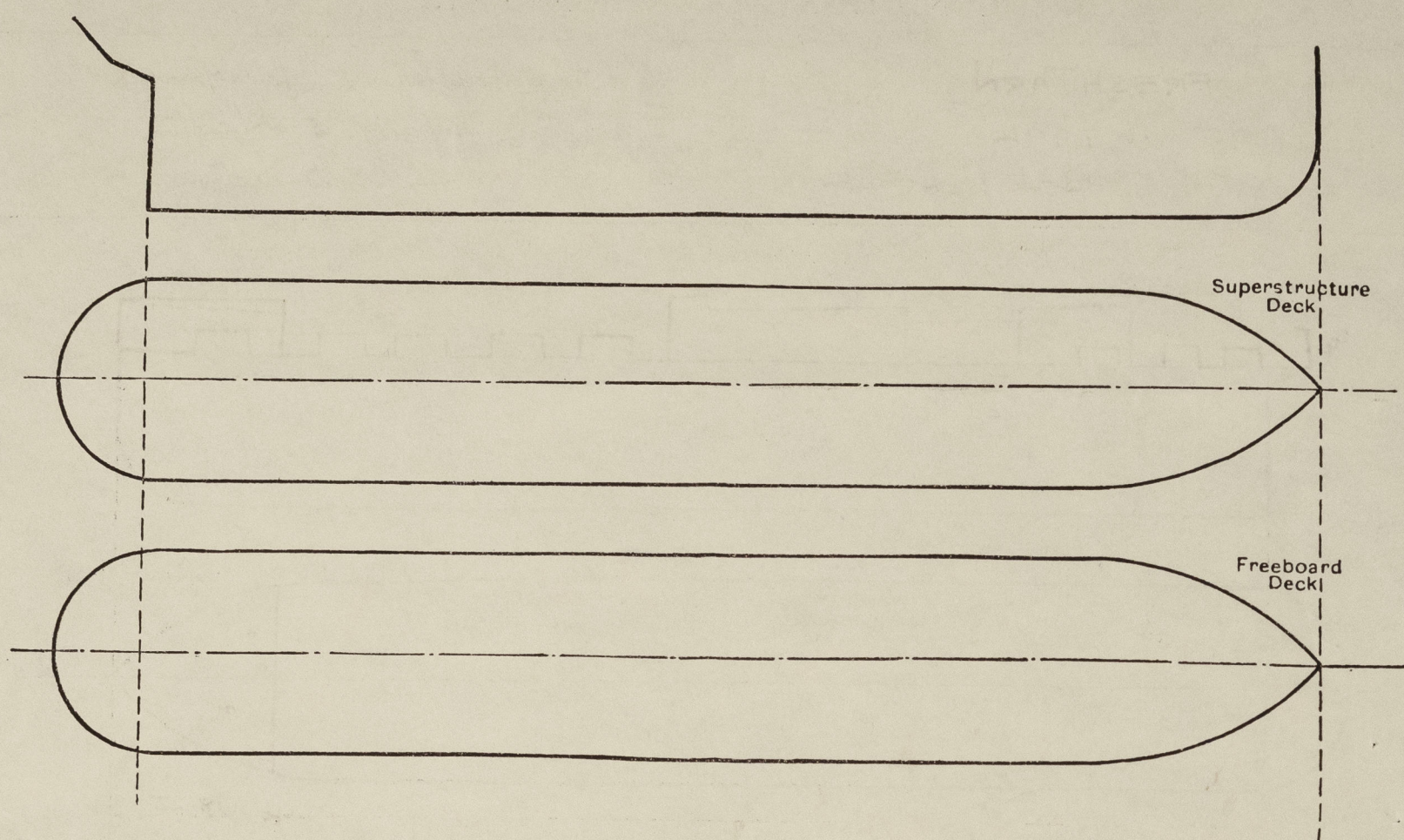
Disposition and dimensions of superstructures, trunks, deckhouses and machinery casings to be inserted in the diagrams and tabular statement :-



Particulars of Superstructures, Trunks, Casings, Deckhouses.								
	Coaming	Plating	Stiffeners	Spacing	End Attachments of Stiffeners	Size of Openings	Height of Sills	Height of Casings
Poop Bulkhead								
Raised Quarter Deck Bulkhead ...								
Bridge, After Bulkhead								
Bridge, Forward Bulkhead								
Forecastle Bulkhead	6 x .25	.20	3 x 2 x .25	25" to 30"	Riveted to boundary angles	4'9" x 2'-0"	16"	6'-6"
Trunk, Aft								
Trunk, Forward								
Exposed Machinery Casings on Freeboard or Raised Quarter Decks ...	18" x .33	.27	3 x 2 1/2 x .30	30"	13 lbs at top only	4'-6" x 2'-0"	20"	7'-0" 3'-9"
Exposed Machinery Casings on Superstructure Decks								
Machinery Casings within Superstructures not fitted with Class I Closing Appliances								
Deckhouses on Flush Deck Ships ...								

Particulars of Closing Appliances (state if capable of being manipulated from both sides).	
Poop Bulkhead	
Raised Quarter Deck Bulkhead ...	
Bridge, After Bulkhead	
Bridge, Forward Bulkhead	
Forecastle Bulkhead	Steel hinged door operated both sides ✓
Exposed Machinery Casings on Freeboard or Raised Quarter Decks ...	4 steel hinged doors to machinery & boiler rooms operated both sides. ✓
Exposed Machinery Casings on Superstructure Decks	
Machinery Casings within Superstructures not fitted with Class I Closing Appliances	
Deckhouses on Flush Deck Ships ...	

The following diagrams should be used to indicate the positions of cargo and coaling hatchways, gangway, cargo and coaling ports, ventilators, companionways, etc., which would affect the seaworthiness of the ship :—



Engine room skylight of steel strongly constructed & fitted with hinged steel flaps. ✓
 Stakeholder ventilators of substantial construction. ✓
 Fiddle gratings fitted with hinged steel storm covers efficiently secured. ✓

Particulars of Flush Bunker Scuttles:— 2P & 2S. Cast iron coaling scuttles (18" clear Admiralty pattern) fitted on upper deck with bayonet socket joint. Lids secured by chains. ✓

Particulars of Companionways:- 1st giving access to tween deck accommodations, 5'-feet strongly constructed 3'-0" x 2'-6" x 1'-6" fitted with sliding steel plate top & having double hinged steel doors operated both sides. ✓

6 - fire castle deck 2 @ 9" diam x $\frac{7}{8}$ " Coaming 36" to lower decks accom. ✓
 " " " 2 @ 4" " , mushroom type coaming 8" x $\frac{1}{2}$ " screws down tops. ✓
 " " " 1 @ 6" " " " " 9" x $\frac{1}{2}$ " " " " ✓
 Upper deck forward 2 @ 7" diam. - Coaming 36" x $\frac{1}{4}$ " screws down tops. ✓
 " " aft 1 @ 12" " to E.R. Coaming 8'0" x $\frac{7}{8}$ " efficiently stagger to machinery casing ✓
 " " " 1 @ 12" " " " 36" x $\frac{5}{16}$ " ✓
 " " " 1 @ 8" " " aft accom. Coaming 36" x $\frac{1}{4}$ ". ✓
 " " " 2 @ 4" " " " " 36" x $\frac{1}{4}$ " screws down tops. ✓
 G. Casing Sides 27 & 2.5 hnwre type vents to bunkers. Openings 4" x 5" ✓
 Height above upper decks 44" & fitted with brass shutters. ✓
 Vents fitted with wood plugs & canvas covers. ✓

Fore peak	3" chas.	Height to opening	3'-0"	✓
F.W tanks	5" "	" "	2'-0"	✓
Aftw peak	3" "	" "	3'-0"	✓
Grand ampt.	1 1/2" "	" "	3'-0"	✓

40 pipes fitted with wood plugs & canvas covers ✓

" " Skyflights to Hcam. (F+A) 3'-6" x 3'-0" x 30" coaming ✓
Strongly constructed & fitted with two hinged steel flaps
Secured by screwed toggles. Flaps fitted with 3 strong glass
lights of 4" diam. ✓

Particulars of Scupperns and Sanitary Discharge Pipes:-

	Scupper 6P & 6S.	dis charge from deck ✓
1 P.S. fwd. bath & wash place	1½" dia	dis charge below freeboard deck open. ✓
1 S.S. " " "	2" "	" " " " " " ✓
1 P & S sanitary discharge below fbd deck (fwd)	4" dia	fitted with malleable C storm valve. ✓
1 P.S. aft bath & wash place	1½" dia	dis charge below fbd. deck open. ✓
1 S.S. " sanitary discharge below fbd deck	4" dia	fitted with malleable C storm valve. ✓

Particulars of Side Scuttles:— 3P & 35. 9" dia fitted in fore-castle with C.I. deadlights, 2P & 25 fine light type. 9" dia fitted in fore-crew's quarters below fore-board deck, fitted with malleable C.I. deadlights. (All brass frames 1" glass.) ✓

 $12 \frac{1}{2} - 0 \frac{3}{8}'' \checkmark$

Particulars of Guard Rails:— On fore-castle deck 3'-0" high fitted with 2 wires & stretching screws. Stanchions spaced 6'-3" apart. ✓


None. ✓

Particulars of Freeing Arrangements.						
	Length of Bulwark	Height of Bulwark	Size of Freeing Ports	Number each side	Area each side	Rule area each side
After Well	102 ft.	3'-0"	2'-9" x 1'-6"	6.	24.75 ϕ	16.8 ϕ
Forward Well						

State position of each freeing port *From fire castle bulkhead :- 12'-6", 26'-6", 40'-0", 57'-0", 72'-2"*
~~After~~ Well :- *at 87'-6" ✓*
 (F. and A. position and height above deck edge) Forward Well :- *3 1/2" above deck. ✓*

State whether the freeing ports are fitted with shutters, bars, or rails, and give particulars of such :- *One horizontal bar. ✓*

Additional area where sheer is less than standard.



© 2021
Lloyd's Register
Foundation

PARTICULARS OF PROTECTION TO OPENINGS, ETC.

HATCHWAYS ON FREEBOARD AND SUPERSTRUCTURE DECKS.									
Description of Hatchway		Sea water tank hatches		Under fore-castle		To Bosun's Store (fore-deck)			
Dimensions of Hatchway		36" x 24"		36" x 30"		27" x 27"			
COAMINGS	{	Height above Deck	18"	18"	18"				
		Thickness { Sides	.30"	.30"	.30"				
		{ Ends							
		Stiffeners	✓	✓	✓				
		Brackets, Stays	✓	✓	✓				
HATCH BEAMS	{	Number	✓	✓	✓				
		Spacing	✓	✓	✓				
		Scantling and Sketch	✓	✓	✓				
		Bearing Surface	✓	✓	✓				
FORE AND AFTERS	{	Number							
		Spacing							
		Unsupported Lengths							
		Scantling* and Sketch							
		Bearing Surface							
HATCH COVERS	{	Material	Steel	Steel	Steel				
		Thickness	.26	.26	.26				
		How fitted	Hinged	Hinged	Hinged				
		Bearing Surface	6 Toggles	3 Toggles	3 Toggles				
Spacing of Cleats		Spaced 16" max		Spaced 16" max		Spaced 16" max			
Number of Tarpaulins		✓		✓		✓			
<p>*Are wood fore and afters steel shod at all bearing surfaces ? Are battens and wedges efficient and in good condition ? Are tarpaulins in good condition and in accordance with rule requirements ? Are lashings provided in accordance with rule requirements ?</p>									

Particulars of any special features:— Vessel is constructed as a special water tank vessel.

Endorsement at first survey and at surveys for renewal of Certificate:—

The fittings and appliances are in accordance with the particulars shown on this form (or as now modified) and are in good condition.



© 2021

Lloyd's Register Foundation